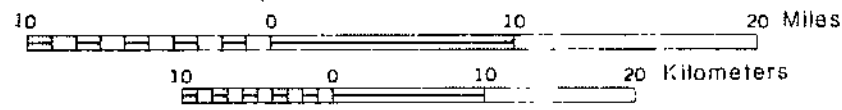
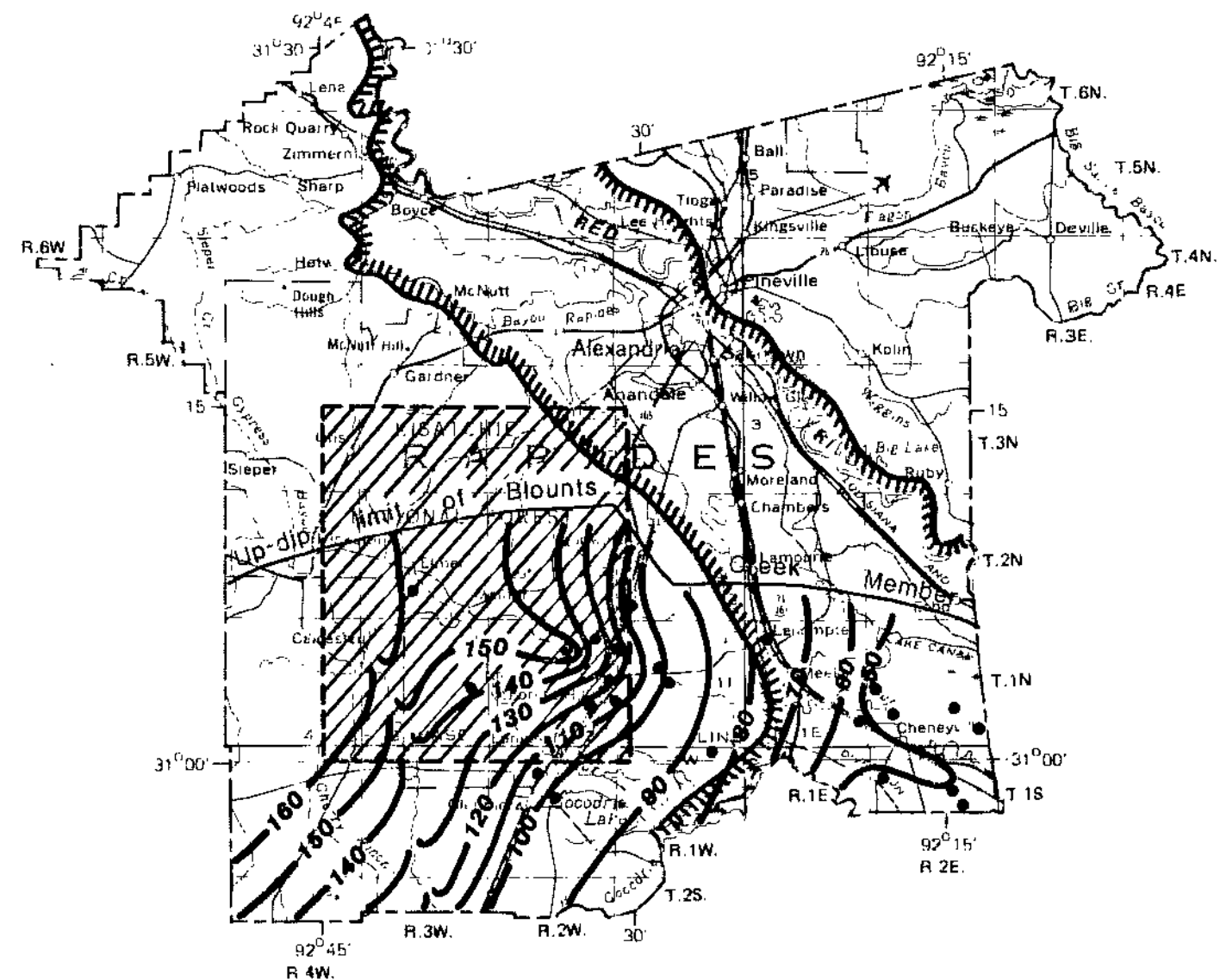


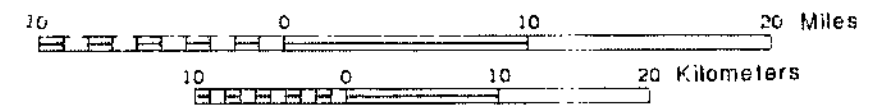
Base by U.S. Geological Survey, 1968



A. Potentiometric surface of the Williamson Creek Member.



Base by U.S. Geological Survey, 1968



B. Potentiometric surface of the Blounts Creek Member.

EXPLANATION






-  Project area
-  Outcrop or subcrop area of Williamson Creek Member
-  Contour shows altitude of potentiometric surface of Williamson Creek Member (Interval 20 feet) and Blounts Creek Member (Interval 10 feet). National Geodetic Vertical Datum of 1929
-  Control point
-  Red River Valley wall

PLATE 5. MAP SHOWING POTENTIOMETRIC SURFACE OF THE WILLIAMSON CREEK AND BLOUNTS CREEK MEMBERS OF THE FLEMING FORMATION IN 1968, PRIOR TO DEVELOPMENT OF THE KISATCHIE WELL FIELD, RAPIDES PARISH, LOUISIANA.