

SCHUYLKILL RIVER BASIN

01471000 TULPEHOCKEN CREEK NEAR READING, PA

LOCATION.--Lat 40°22'08", long 75°58'46", Berks County, Hydrologic Unit 02040203, on right bank 15 ft upstream from covered bridge on Township Route 921, 1.0 mi downstream from Cacoosing Creek, 2.5 mi upstream from mouth, and 3.5 mi northwest of town square in Reading.

DRAINAGE AREA.--211 mi².

PERIOD OF RECORD.--October 1950 to current year.

REVISED RECORDS.--WSP 1382: 1951-53, 1954 (M). WSP 2102: 1965 (M). WDR PA-72-1: 1971 (M).

GAGE.--Water-stage recorder. Datum of gage is 216.60 ft above sea level.

REMARKS.--No estimated daily discharges. Records good. Flow regulated since April 1979 by Blue Marsh Lake (station 01470870) 3.9 mi upstream. Several measurements of water temperature were made during the year. Satellite and landline telemetry at station.

DISCHARGE, CUBIC FEET PER SECOND, WATER YEAR OCTOBER 1999 TO SEPTEMBER 2000
DAILY MEAN VALUES

DAY	OCT	NOV	DEC	JAN	FEB	MAR	APR	MAY	JUN	JUL	AUG	SEP
1	822	160	548	212	173	926	534	254	203	425	159	152
2	519	206	539	212	173	534	529	198	208	425	160	125
3	509	207	436	212	173	463	526	193	197	361	170	121
4	518	226	224	213	173	432	564	193	197	304	196	120
5	588	227	223	214	173	427	535	213	197	263	208	145
6	615	187	241	212	172	362	485	232	456	197	206	172
7	614	187	230	184	159	339	438	231	393	174	191	161
8	526	187	224	151	143	394	441	231	171	176	142	124
9	451	160	216	151	142	323	480	204	134	176	113	98
10	519	135	210	208	142	217	559	187	133	186	104	98
11	486	134	202	391	144	223	636	244	128	196	94	98
12	616	134	197	473	148	277	539	234	202	193	94	98
13	746	131	194	439	145	343	455	191	523	187	97	183
14	743	132	285	271	223	547	419	199	561	180	106	176
15	652	132	621	193	283	624	400	207	293	191	135	119
16	562	131	881	193	414	615	400	227	254	180	133	118
17	553	131	636	189	542	732	396	227	263	190	112	117
18	362	131	445	212	495	746	400	227	262	199	114	116
19	187	129	438	231	458	740	351	240	259	192	112	152
20	145	127	348	245	452	565	289	234	241	193	111	271
21	140	126	315	276	448	683	322	223	227	166	97	348
22	137	125	305	275	320	1150	380	329	518	133	80	215
23	140	125	247	278	202	1290	370	418	499	120	81	116
24	137	126	251	213	218	2010	337	462	323	160	81	116
25	136	126	250	140	378	1680	308	822	331	201	98	116
26	184	149	249	139	585	1580	308	818	1940	203	117	154
27	215	209	244	154	575	1380	308	406	2790	186	118	169
28	200	163	243	176	1110	1450	308	399	1080	161	123	151
29	174	338	243	173	1380	1710	304	383	456	162	118	131
30	160	555	227	176	---	1110	299	306	379	161	119	131
31	160	---	212	174	---	669	---	203	---	160	120	---
TOTAL	12516	5236	10124	6980	10143	24541	12620	9135	13818	6401	3909	4411
MEAN	404	175	327	225	350	792	421	295	461	206	126	147
MAX	822	555	881	473	1380	2010	636	822	2790	425	208	348
MIN	136	125	194	139	142	217	289	187	128	120	80	98

SCHUYLKILL RIVER BASIN

01471000 TULPEHOCKEN CREEK NEAR READING, PA--Continued

STATISTICS OF MONTHLY MEAN DATA FOR WATER YEARS 1980 - 2000, BY WATER YEAR (WY) (SINCE REGULATION)

	OCT	NOV	DEC	JAN	FEB	MAR	APR	MAY	JUN	JUL	AUG	SEP
MEAN	240	287	402	377	401	531	408	371	291	216	153	167
MAX	651	589	1220	1069	663	1604	1191	1226	673	661	331	456
(WY)	1997	1997	1997	1996	1986	1994	1983	1989	1982	1984	1994	1987
MIN	78.3	83.6	80.1	99.8	149	153	64.2	155	98.8	115	63.1	63.0
(WY)	1996	1981	1999	1981	1980	1981	1985	1999	1999	1985	1981	1983

SUMMARY STATISTICS	FOR 1999 CALENDAR YEAR	FOR 2000 WATER YEAR	WATER YEARS 1980 - 2000
ANNUAL TOTAL	101473	119834	
ANNUAL MEAN	278	327	320
HIGHEST ANNUAL MEAN			531
LOWEST ANNUAL MEAN			146
HIGHEST DAILY MEAN	2520	Jan 20	2790
LOWEST DAILY MEAN	54	Jun 27	80
ANNUAL SEVEN-DAY MINIMUM	59	Aug 29	94
INSTANTANEOUS PEAK FLOW			a3960
INSTANTANEOUS PEAK STAGE			5.57
10 PERCENT EXCEEDS	565		586
50 PERCENT EXCEEDS	189		214
90 PERCENT EXCEEDS	72		125

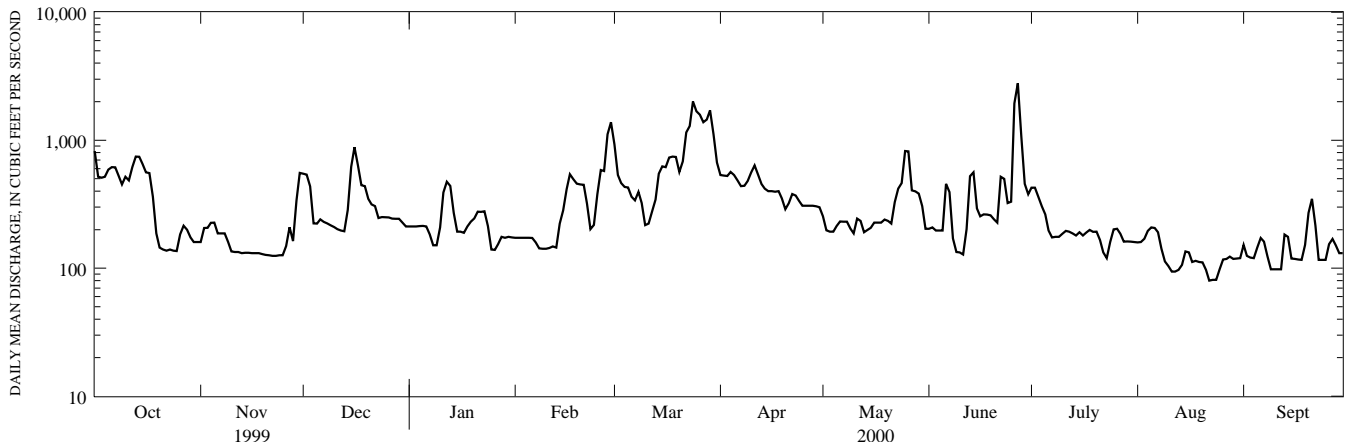
STATISTICS OF MONTHLY MEAN DATA FOR WATER YEARS 1951 - 1979, BY WATER YEAR (WY) (PRIOR TO REGULATION)

	OCT	NOV	DEC	JAN	FEB	MAR	APR	MAY	JUN	JUL	AUG	SEP
MEAN	178	259	360	405	444	522	451	318	263	210	178	192
MAX	689	490	829	1193	917	914	806	712	1434	645	481	588
(WY)	1977	1973	1978	1979	1971	1978	1970	1953	1972	1969	1955	1975
MIN	55.8	67.5	84.4	124	178	202	170	116	72.8	57.5	41.9	54.8
(WY)	1964	1966	1966	1966	1969	1969	1966	1965	1965	1966	1966	1957

SUMMARY STATISTICS WATER YEARS 1951 - 1979

ANNUAL MEAN	314
HIGHEST ANNUAL MEAN	491
LOWEST ANNUAL MEAN	144
HIGHEST DAILY MEAN	12000
LOWEST DAILY MEAN	33
ANNUAL SEVEN-DAY MINIMUM	35
INSTANTANEOUS PEAK FLOW	a17000
INSTANTANEOUS PEAK STAGE	b15.65
INSTANTANEOUS LOW FLOW	23
ANNUAL RUNOFF (CFSM)	1.49
ANNUAL RUNOFF (INCHES)	20.23
10 PERCENT EXCEEDS	613
50 PERCENT EXCEEDS	211
90 PERCENT EXCEEDS	86

- a From rating curve extended above 3,600 ft³/s on basis of contracted-opening measurement of peak flow.
- b From floodmark in gage shelter.



1-YEAR HYDROGRAPH
OCTOBER 1, 1999 TO SEPTEMBER 30, 2000