

## CHEMUNG RIVER BASIN

## 01516500 COREY CREEK NEAR MAINESBURG, PA

**LOCATION.**--Lat 41°47'27", long 77°00'54", Tioga County, Hydrologic Unit 02050104, on right bank 30 ft upstream from bridge on Township Route 818, 500 ft upstream from small left-bank tributary, 1.1 mi west of Mainesburg, 3.5 mi east of Mansfield, and 4.2 mi upstream from mouth.

**DRAINAGE AREA.**--12.2 mi<sup>2</sup>.

**PERIOD OF RECORD.**--May 1954 to current year.

**GAGE.**--Water-stage recorder. Datum of gage is 1,337.50 ft above sea level. Prior to June 28, 1954, nonrecording gage at site 30 ft downstream at same datum.

**REMARKS.**--Records good except those for estimated daily discharges, which are poor. Several measurements of water temperature were made during the year. Satellite telemetry at station.

**PEAK DISCHARGES FOR CURRENT YEAR.**--Peak discharges greater than a base discharge of 280 ft<sup>3</sup>/s and maximum (\*):

Date	Time	Discharge ft <sup>3</sup> /s	Gage Height (ft)	Date	Time	Discharge ft <sup>3</sup> /s	Gage Height (ft)
Nov. 26	2045	404	4.28	Apr. 4	0430	*1,050	*6.01
Feb. 28	0100	311	3.91				

DISCHARGE, CUBIC FEET PER SECOND, WATER YEAR OCTOBER 1999 TO SEPTEMBER 2000  
DAILY MEAN VALUES

DAY	OCT	NOV	DEC	JAN	FEB	MAR	APR	MAY	JUN	JUL	AUG	SEP
1	6.7	1.5	12	e6.0	e4.0	39	12	8.6	4.3	2.7	1.2	.67
2	5.1	1.7	10	6.1	e3.8	32	11	9.0	4.1	2.3	1.1	.63
3	4.3	2.7	9.9	7.7	e3.6	24	69	7.2	3.9	2.2	.89	.54
4	4.4	2.1	9.6	19	e3.4	20	389	6.2	3.1	2.3	.80	.53
5	4.2	1.8	8.4	11	e3.3	17	77	5.8	3.7	1.8	.64	.45
6	3.7	1.7	8.4	e8.0	e3.1	15	43	5.2	8.6	1.6	.67	.43
7	3.3	1.6	7.6	7.3	e3.0	13	32	4.7	6.9	1.4	1.5	.43
8	3.0	1.6	6.7	e7.0	e2.8	12	92	4.4	4.3	1.3	1.1	.36
9	2.6	1.8	6.2	6.9	e2.7	12	98	4.1	3.4	1.3	.75	.33
10	2.9	1.6	6.2	12	e3.5	11	57	4.3	2.8	1.4	.63	.33
11	2.9	1.5	5.8	15	e5.0	17	40	4.2	2.4	1.2	.59	.33
12	2.5	1.6	5.1	9.8	e5.4	38	32	3.7	5.0	.97	.71	.90
13	2.3	1.5	5.1	e9.5	e6.4	20	28	3.6	4.1	.86	.63	2.4
14	4.0	1.5	29	e9.0	e7.0	18	23	3.3	4.2	.81	.56	1.3
15	3.1	1.5	39	e8.6	e15	16	20	2.5	3.3	1.1	.50	1.2
16	2.6	1.4	27	e8.4	e13	27	17	2.4	13	1.3	.41	1.1
17	2.6	1.4	20	e7.6	e11	52	18	1.9	8.6	1.2	.28	.96
18	2.6	1.3	17	e7.0	e10	26	49	5.8	14	.98	.27	.76
19	2.3	1.3	13	e6.5	e9.0	23	29	30	14	.78	.34	.74
20	2.0	1.3	15	e7.0	e10	21	25	14	7.5	.78	.28	.73
21	2.0	1.3	17	e6.4	e9.0	59	37	10	17	.66	.22	.64
22	2.0	1.3	12	e5.6	e16	58	42	10	13	.71	.20	.58
23	2.3	1.3	e11	e6.0	49	36	37	11	6.8	.60	.32	.53
24	2.2	1.2	e10	e6.4	60	29	27	34	5.1	.52	.57	.67
25	1.9	2.1	e9.6	e5.8	121	28	22	24	4.8	.48	.41	.74
26	1.9	71	e9.2	e5.2	94	26	18	14	7.4	.46	.30	1.0
27	1.7	77	e8.7	e4.8	96	20	18	11	8.2	.49	.22	1.1
28	1.6	31	e8.4	e4.3	146	27	17	8.9	5.5	2.4	.44	.90
29	1.5	21	e8.2	e3.8	56	19	13	7.2	4.1	3.3	3.1	.77
30	1.5	16	7.9	e3.5	---	16	10	5.9	3.6	1.8	1.1	.75
31	1.5	---	e6.5	e3.8	---	14	---	4.9	---	1.5	.76	---
TOTAL	87.2	255.6	369.5	235.0	772.0	785	1402	271.8	196.7	41.20	21.49	22.80
MEAN	2.81	8.52	11.9	7.58	26.6	25.3	46.7	8.77	6.56	1.33	.69	.76
MAX	6.7	77	39	19	146	59	389	34	17	3.3	3.1	2.4
MIN	1.5	1.2	5.1	3.5	2.7	11	10	1.9	2.4	.46	.20	.33
CFM	.23	.70	.98	.62	2.18	2.08	3.83	.72	.54	.11	.06	.06
IN.	.27	.78	1.13	.72	2.35	2.39	4.27	.83	.60	.13	.07	.07

STATISTICS OF MONTHLY MEAN DATA FOR WATER YEARS 1954 - 2000, BY WATER YEAR (WY)

MEAN	6.44	10.8	14.3	12.3	17.0	29.1	28.9	14.1	9.28	3.12	2.92	2.82
MAX	51.0	45.4	42.7	52.4	52.4	60.4	118	42.7	114	19.9	55.2	44.4
(WY)	1956	1978	1974	1996	1984	1964	1993	1989	1972	1994	1994	1975
MIN	.15	.48	.80	.75	1.71	4.88	8.19	2.88	.69	.10	.074	.000
(WY)	1964	1965	1999	1961	1963	1965	1955	1999	1991	1966	1964	1964

e Estimated.

CHEMUNG RIVER BASIN

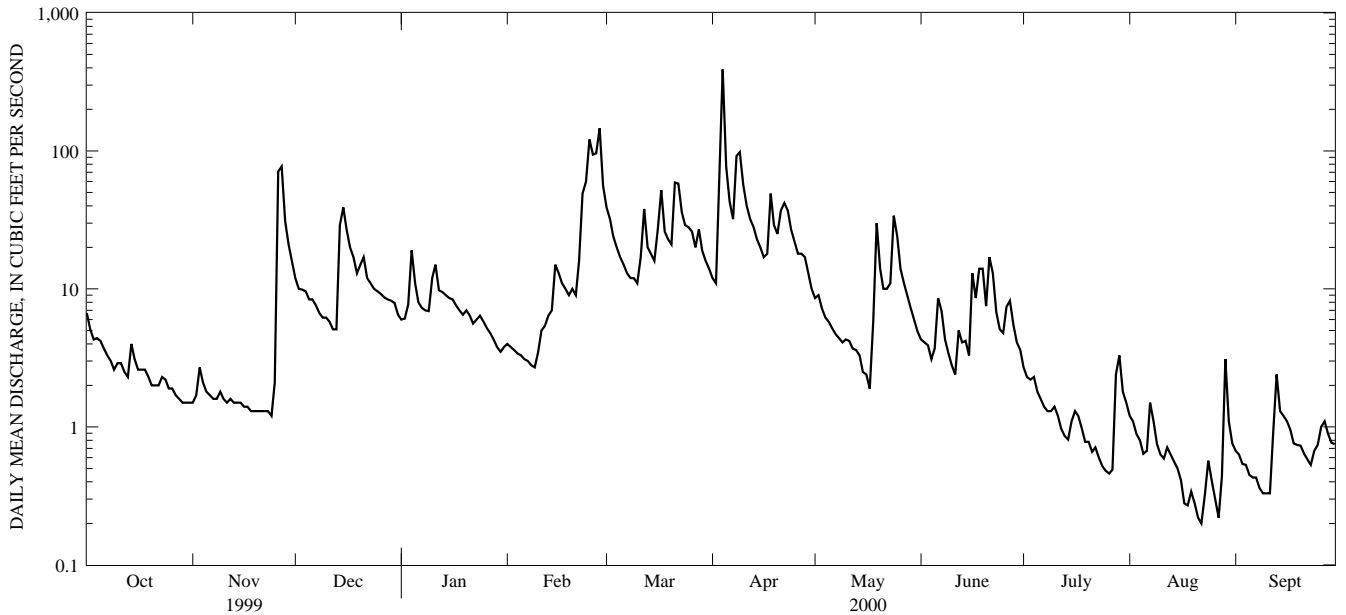
01516500 COREY CREEK NEAR MAINESBURG, PA--Continued

SUMMARY STATISTICS	FOR 1999 CALENDAR YEAR		FOR 2000 WATER YEAR		WATER YEARS 1954 - 2000	
ANNUAL TOTAL	2918.39		4460.29			
ANNUAL MEAN	8.00		12.2		12.6	
HIGHEST ANNUAL MEAN					24.9	
LOWEST ANNUAL MEAN					4.82	
HIGHEST DAILY MEAN	187	Mar 4	389	Apr 4	1910	Jun 22 1972
LOWEST DAILY MEAN	.02	Aug 12 <sup>a</sup>	.20	Aug 22	.00	Many days
ANNUAL SEVEN-DAY MINIMUM	.02	Aug 12	.27	Aug 17	.00	Aug 17 1959
INSTANTANEOUS PEAK FLOW			b1050	Apr 4	b5580	Jun 23 1972
INSTANTANEOUS PEAK STAGE			6.01	Apr 4	c10.44	Jun 23 1972
ANNUAL RUNOFF (CFSM)	.66		1.00		1.03	
ANNUAL RUNOFF (INCHES)	8.90		13.60		14.01	
10 PERCENT EXCEEDS	19		29		28	
50 PERCENT EXCEEDS	2.3		4.4		4.3	
90 PERCENT EXCEEDS	.06		.64		.49	

a Also, Aug. 15-19, 23-25.

b From rating curve extended above 490 ft<sup>3</sup>/s on basis of slope-area measurement at gage height 7.88 ft and at peak flow.

c From floodmark.



1-YEAR HYDROGRAPH  
OCTOBER 1, 1999 TO SEPTEMBER 30, 2000