

CHEMUNG RIVER BASIN

01520000 COWANESQUE RIVER NEAR LAWRENCEVILLE, PA

LOCATION.--Lat 41°59'48", long 77°08'25", Tioga County, Hydrologic Unit 02050104, on left bank on SR 4022, 0.5 mi downstream from Cowanesque Dam, 0.8 mi upstream from highway bridge on U.S. Route 15 in Lawrenceville, and 1.4 mi upstream from mouth.

DRAINAGE AREA.--298 mi².

PERIOD OF RECORD.--June 1951 to current year. Prior to October 1951 monthly discharge only, published in WSP 1722.

REVISED RECORDS.--WDR PA-72-1: 1971(M).

GAGE.--Water-stage recorder. Datum of gage is 983.96 ft above sea level. Prior to July 1976 at site 1.1 mi upstream at datum 14.07 ft higher.

REMARKS.--Records good except those for estimated daily discharges, which are poor. Flow regulated since December 1979 by Cowanesque Dam (station 01519995). Several measurements of water temperature were made during the year. Satellite and landline telemetry at station.

DISCHARGE, CUBIC FEET PER SECOND, WATER YEAR OCTOBER 1999 TO SEPTEMBER 2000
DAILY MEAN VALUES

DAY	OCT	NOV	DEC	JAN	FEB	MAR	APR	MAY	JUN	JUL	AUG	SEP
1	168	30	273	84	82	1760	154	259	163	114	23	24
2	136	32	157	82	76	906	154	224	194	101	24	24
3	98	31	211	105	64	500	296	248	166	81	24	24
4	59	29	159	672	64	350	1620	226	85	78	24	38
5	34	27	203	701	64	440	1440	188	130	70	25	41
6	34	26	220	339	66	505	680	165	276	48	26	22
7	20	26	155	291	75	324	542	165	202	27	204	22
8	10	26	100	305	80	287	1150	127	134	27	219	23
9	12	26	123	305	80	310	1850	107	106	27	101	e24
10	12	26	163	281	80	299	1410	121	66	27	200	e24
11	13	26	74	324	75	278	799	155	66	27	120	e24
12	13	26	54	416	66	401	625	349	113	27	76	e24
13	17	26	79	293	101	409	502	533	994	27	42	25
14	77	26	251	143	237	341	406	455	4550	28	41	46
15	58	28	946	102	281	329	340	421	2200	41	69	68
16	91	30	1130	102	279	268	342	217	927	51	71	74
17	94	30	778	126	237	362	471	165	989	51	43	55
18	64	30	484	112	232	429	481	248	663	38	36	e35
19	33	32	346	75	195	427	389	2210	704	31	31	e25
20	26	32	249	121	195	398	376	1690	557	31	31	e22
21	26	32	249	138	137	436	706	1040	362	31	31	e22
22	28	32	249	104	136	858	1060	852	745	31	25	22
23	30	32	157	104	391	623	1600	725	412	31	22	23
24	30	32	92	105	1580	486	938	1230	202	31	22	24
25	30	34	70	104	2680	455	637	1280	192	31	23	24
26	30	495	62	86	3110	453	514	623	154	25	23	23
27	30	1660	70	74	3540	455	464	393	169	20	24	23
28	30	1030	79	94	2830	293	437	330	155	20	24	23
29	30	674	104	82	2110	210	351	301	115	21	24	22
30	30	510	104	82	---	232	309	237	123	22	23	22
31	30	---	93	82	---	197	---	162	---	22	23	---
TOTAL	1393	5096	7484	6034	19143	14021	21043	15446	15914	1237	1694	892
MEAN	44.9	170	241	195	660	452	701	498	530	39.9	54.6	29.7
MAX	168	1660	1130	701	3540	1760	1850	2210	4550	114	219	74
MIN	10	26	54	74	64	197	154	107	66	20	22	22

e Estimated.

CHEMUNG RIVER BASIN

01520000 COWANESQUE RIVER NEAR LAWRENCEVILLE, PA--Continued

STATISTICS OF MONTHLY MEAN DATA FOR WATER YEARS 1980 - 2000, BY WATER YEAR (WY) (SINCE REGULATION)

	OCT	NOV	DEC	JAN	FEB	MAR	APR	MAY	JUN	JUL	AUG	SEP
MEAN	154	284	326	317	415	619	730	380	256	96.5	101	75.9
MAX	1122	1114	864	1198	1027	1527	2773	1115	1222	462	889	315
(WY)	1991	1997	1991	1996	1981	1994	1993	1996	1989	1984	1994	1992
MIN	13.9	14.3	19.1	23.3	57.6	158	231	48.9	17.4	14.1	11.9	5.09
(WY)	1989	1992	1999	1981	1980	1981	1997	1985	1991	1991	1983	1980

SUMMARY STATISTICS	FOR 1999 CALENDAR YEAR		FOR 2000 WATER YEAR		WATER YEARS 1980 - 2000	
ANNUAL TOTAL	72131		109397			
ANNUAL MEAN	198		299		312	
HIGHEST ANNUAL MEAN					498	
LOWEST ANNUAL MEAN					165	
HIGHEST DAILY MEAN	2810	Jan 26	4550	Jun 14	5840	Jan 23 1996
LOWEST DAILY MEAN	10	Oct 8	10	Oct 8	3.4	Sep 13 1980
ANNUAL SEVEN-DAY MINIMUM	13	Jan 12	14	Oct 7	3.9	Sep 10 1980
INSTANTANEOUS PEAK FLOW			4730	Jun 14	6580	Jan 23 1996
INSTANTANEOUS PEAK STAGE			11.59	Jun 14	12.41	Jan 23 1996
10 PERCENT EXCEEDS	569		712		770	
50 PERCENT EXCEEDS	30		104		106	
90 PERCENT EXCEEDS	15		24		17	

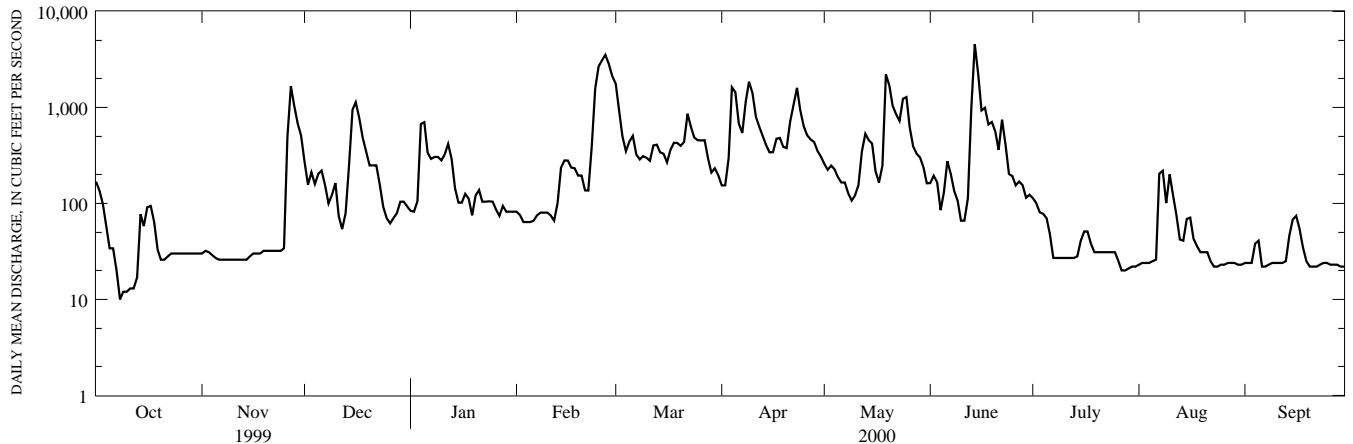
STATISTICS OF MONTHLY MEAN DATA FOR WATER YEARS 1952 - 1979, BY WATER YEAR (WY) (PRIOR TO REGULATION)

	OCT	NOV	DEC	JAN	FEB	MAR	APR	MAY	JUN	JUL	AUG	SEP
MEAN	121	203	297	288	345	808	707	359	220	61.0	39.1	87.9
MAX	809	826	860	886	1173	1909	1934	797	1366	223	125	1054
(WY)	1956	1978	1973	1952	1976	1964	1958	1960	1972	1977	1977	1975
MIN	3.33	7.95	12.2	13.9	45.6	230	167	55.5	13.8	7.00	3.11	2.52
(WY)	1965	1965	1961	1961	1963	1965	1955	1955	1955	1966	1954	1964

SUMMARY STATISTICS WATER YEARS 1952 - 1979

ANNUAL MEAN	294	
HIGHEST ANNUAL MEAN	514	1978
LOWEST ANNUAL MEAN	135	1965
HIGHEST DAILY MEAN	21500	Jun 23 1972
LOWEST DAILY MEAN	.00	Aug 22 1978
ANNUAL SEVEN-DAY MINIMUM	1.5	Sep 22 1964
INSTANTANEOUS PEAK FLOW	^a 43700	Sep 26 1975
INSTANTANEOUS PEAK STAGE	^b 18.13	Sep 26 1975
INSTANTANEOUS LOW FLOW	^c 0.8	Aug 31, Sep 1, 27, 1964
ANNUAL RUNOFF (CFSM)	.99	
ANNUAL RUNOFF (INCHES)	13.41	
10 PERCENT EXCEEDS	694	
50 PERCENT EXCEEDS	95	
90 PERCENT EXCEEDS	10	

- a From rating curve extended above 6,000 ft³/s, on basis of slope-area measurement of peak flow.
- b From floodmark; site and datum then in use.
- c No flow Aug. 22, 1978, during dam construction.



1-YEAR HYDROGRAPH
OCTOBER 1, 1999 TO SEPTEMBER 30, 2000