

LACKAWANNA RIVER BASIN

01534500 LACKAWANNA RIVER AT ARCHBALD, PA

LOCATION.--Lat 41°30'16", long 75°32'33", Lackawanna County, Hydrologic Unit 02050107, on right bank along SR 1012 in Archbald, and 0.5 mi upstream from White Oak Run and Gilmartin Street bridge.

DRAINAGE AREA.--108 mi².

PERIOD OF RECORD.--October 1939 to current year. Prior to February 1940 monthly discharge only, published in WSP 1302.

GAGE.--Water-stage recorder. Datum of gage is 889.33 ft above sea level.

REMARKS.--Records good except those for estimated daily discharge, which is poor. Regulation at low flow by mine pumps upstream from station. Flow regulated since December 1959 by Stillwater Dam (station 01534180) about 17 mi upstream. Several measurements of water temperature were made during the year. Satellite and landline telemetry at station.

DISCHARGE, CUBIC FEET PER SECOND, WATER YEAR OCTOBER 1999 TO SEPTEMBER 2000
DAILY MEAN VALUES

DAY	OCT	NOV	DEC	JAN	FEB	MAR	APR	MAY	JUN	JUL	AUG	SEP
1	169	69	221	101	99	1280	315	226	229	138	170	47
2	153	97	188	102	94	1120	281	221	234	121	129	53
3	125	224	171	110	90	870	261	205	248	110	113	49
4	223	204	165	137	93	678	473	189	190	111	118	53
5	229	180	160	171	88	521	566	181	193	101	99	58
6	209	155	167	150	84	417	542	171	669	91	90	55
7	184	138	164	137	82	368	441	160	734	82	212	51
8	159	126	152	125	75	383	392	152	514	76	134	48
9	166	117	141	119	80	430	616	144	407	71	108	44
10	208	110	137	179	75	469	551	164	321	68	101	42
11	231	105	132	300	78	510	529	190	333	63	97	41
12	203	97	124	264	77	925	503	169	579	59	91	50
13	180	92	120	253	76	717	453	413	477	55	86	210
14	197	92	141	213	205	810	410	432	482	53	84	129
15	187	95	221	184	297	613	366	355	461	69	91	115
16	172	94	262	184	287	477	327	267	419	96	95	100
17	157	89	249	152	269	627	338	221	333	100	86	84
18	144	83	229	e130	250	516	521	239	285	84	78	74
19	130	79	206	e132	245	468	565	500	274	71	71	67
20	136	77	188	144	226	409	597	545	239	64	66	68
21	132	76	193	127	205	357	564	503	215	57	61	64
22	126	73	181	112	190	315	606	583	287	53	57	59
23	125	70	166	119	197	277	561	772	221	50	63	54
24	117	68	149	123	232	248	497	1040	186	48	68	49
25	108	76	132	113	386	230	423	966	170	47	63	47
26	106	99	132	117	548	236	362	830	181	45	59	48
27	101	347	130	105	823	219	318	622	181	46	56	48
28	96	291	116	96	1590	504	332	474	168	46	53	46
29	84	271	119	93	785	523	296	377	154	49	51	43
30	77	248	114	92	---	470	257	312	159	82	48	42
31	72	---	107	97	---	381	---	265	---	155	47	---
TOTAL	4706	3942	5077	4481	7826	16368	13263	11888	9543	2361	2745	1938
MEAN	152	131	164	145	270	528	442	383	318	76.2	88.5	64.6
MAX	231	347	262	300	1590	1280	616	1040	734	155	212	210
MIN	72	68	107	92	75	219	257	144	154	45	47	41

e Estimated.

LACKAWANNA RIVER BASIN

01534500 LACKAWANNA RIVER AT ARCHBALD, PA--Continued

STATISTICS OF MONTHLY MEAN DATA FOR WATER YEARS 1960 - 2000, BY WATER YEAR (WY) (SINCE REGULATION)

	OCT	NOV	DEC	JAN	FEB	MAR	APR	MAY	JUN	JUL	AUG	SEP
MEAN	124	194	224	195	218	368	425	263	165	90.7	68.4	81.6
MAX	578	661	581	541	598	741	1111	610	605	278	234	377
(WY)	1978	1973	1974	1996	1981	1977	1993	1989	1972	1984	1994	1987
MIN	15.8	17.4	42.6	38.2	40.4	143	174	101	47.9	25.6	25.0	18.4
(WY)	1965	1965	1999	1981	1980	1981	1988	1982	1962	1965	1966	1964

SUMMARY STATISTICS	FOR 1999 CALENDAR YEAR		FOR 2000 WATER YEAR		WATER YEARS 1960 - 2000	
ANNUAL TOTAL	57928		84138			
ANNUAL MEAN	159		230		201	
HIGHEST ANNUAL MEAN					313	
LOWEST ANNUAL MEAN					101	
HIGHEST DAILY MEAN	1390	Jan 24	1590	Feb 28	3250	Mar 15 1986
LOWEST DAILY MEAN	27	Sep 3a	41	Sep 11	13	Nov 1 1964
ANNUAL SEVEN-DAY MINIMUM	28	Sep 8	46	Sep 24	14	Oct 26 1964
INSTANTANEOUS PEAK FLOW			b2610		b7190	
INSTANTANEOUS PEAK STAGE			6.03		9.32	
10 PERCENT EXCEEDS	316		518		459	
50 PERCENT EXCEEDS	132		158		121	
90 PERCENT EXCEEDS	32		58		35	

STATISTICS OF MONTHLY MEAN DATA FOR WATER YEARS 1940 - 1959, BY WATER YEAR (WY) (PRIOR TO REGULATION)

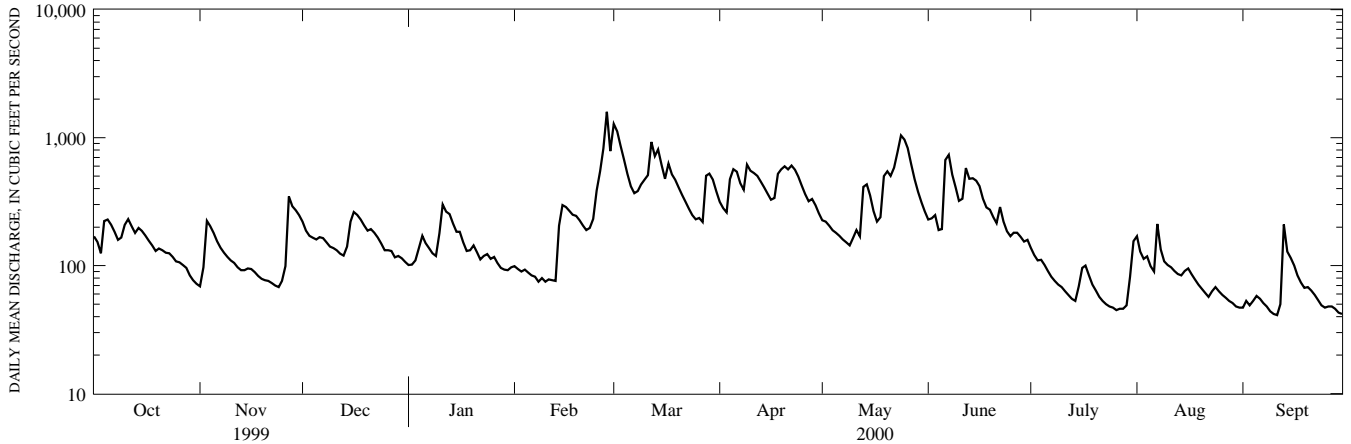
	OCT	NOV	DEC	JAN	FEB	MAR	APR	MAY	JUN	JUL	AUG	SEP
MEAN	113	209	222	203	181	377	455	279	145	112	92.3	78.9
MAX	657	430	420	380	371	691	1113	553	284	373	443	187
(WY)	1956	1946	1951	1949	1951	1945	1940	1947	1946	1947	1955	1945
MIN	27.2	50.1	53.3	56.8	65.2	188	121	85.6	63.4	38.4	31.8	28.8
(WY)	1942	1942	1947	1948	1940	1941	1946	1941	1955	1955	1953	1953

SUMMARY STATISTICS WATER YEARS 1940 - 1959

ANNUAL MEAN	203	
HIGHEST ANNUAL MEAN	266	1956
LOWEST ANNUAL MEAN	153	1957
HIGHEST DAILY MEAN	4840	May 23 1942
LOWEST DAILY MEAN	17	Oct 12 1941
ANNUAL SEVEN-DAY MINIMUM	20	Oct 18 1953
INSTANTANEOUS PEAK FLOW	b9510	May 22 1942
INSTANTANEOUS PEAK STAGE	10.58	May 22 1942
INSTANTANEOUS LOW FLOW	3.0	Oct 9,11 1943
ANNUAL RUNOFF (CFSM)	1.88	
ANNUAL RUNOFF (INCHES)	25.54	
10 PERCENT EXCEEDS	439	
50 PERCENT EXCEEDS	123	
90 PERCENT EXCEEDS	42	

a Also Sept. 4-5, 12-14.

b From rating curve extended above 1,900 ft³/s on basis of slope-area measurement of peak flow.



1-YEAR HYDROGRAPH
OCTOBER 1, 1999 TO SEPTEMBER 30, 2000