

LACKAWANNA RIVER BASIN

01536000 LACKAWANNA RIVER AT OLD FORGE, PA

LOCATION.--Lat 41°21'33", long 75°44'41", Lackawanna County, Hydrologic Unit 02050107, on right bank 100 ft downstream from bridge on SR 3017, 150 ft upstream from Delaware, Lackawanna, and Western Railroad bridge in Old Forge, and 0.5 mi upstream from St. Johns Creek.

DRAINAGE AREA.--332 mi².

PERIOD OF RECORD.--October 1938 to current year.

REVISED RECORDS.--WSP 1432: 1939(M), 1940, 1945. WDR PA-90-2: 1985(M).

GAGE.--Water-stage recorder. Datum of gage is 595.26 ft above sea level. Prior to Oct. 1, 1974, water-stage recorder at same site and datum. Oct. 1, 1974, to Aug. 17, 1975, nonrecording gage at site 150 ft upstream at different datum.

REMARKS.--Records good except those for estimated daily discharges, which are poor. Flow regulated since December 1959 by Stillwater Dam (station 01534180) about 33 mi upstream. Several measurements of water temperature were made during the year. Satellite and landline telemetry at station.

DISCHARGE, CUBIC FEET PER SECOND, WATER YEAR OCTOBER 1999 TO SEPTEMBER 2000
DAILY MEAN VALUES

DAY	OCT	NOV	DEC	JAN	FEB	MAR	APR	MAY	JUN	JUL	AUG	SEP
1	405	132	526	196	186	2040	640	418	397	396	710	77
2	312	216	e450	190	160	1700	569	424	356	329	450	97
3	256	627	399	205	137	1400	528	389	395	278	340	103
4	561	498	383	275	153	1220	898	350	305	268	287	122
5	454	395	362	352	147	1040	1000	340	342	245	217	86
6	378	341	376	275	141	877	905	322	1960	203	184	80
7	321	299	366	237	138	749	751	326	2150	177	385	73
8	277	269	312	220	127	733	712	328	1290	157	281	69
9	273	249	283	208	126	758	1430	275	1020	144	236	69
10	390	235	274	348	135	793	1250	317	776	145	202	65
11	435	223	275	668	143	891	1220	437	705	133	173	66
12	343	201	246	520	136	1850	1160	379	1270	120	156	91
13	294	192	239	471	127	1310	1070	560	1280	110	141	485
14	352	185	360	379	574	1290	966	730	1120	102	141	202
15	314	181	606	315	697	1120	855	592	985	172	146	174
16	282	172	645	330	541	961	752	461	869	239	141	151
17	256	159	565	239	465	1510	744	385	689	193	131	126
18	235	149	497	234	399	1230	1010	401	701	156	118	114
19	210	145	441	240	396	1100	987	865	716	130	109	113
20	222	149	405	240	329	992	999	951	550	117	101	109
21	218	142	439	239	289	868	995	877	518	107	96	101
22	209	138	399	226	265	762	1120	884	818	108	88	91
23	214	133	346	224	296	667	1030	1210	555	93	117	82
24	199	128	307	221	419	588	932	1430	427	90	114	80
25	187	173	265	189	895	536	789	1390	398	86	99	76
26	179	237	256	204	1310	524	684	1230	503	82	91	100
27	171	1370	256	186	1640	481	605	1030	658	79	81	86
28	e170	970	226	141	4670	1060	602	818	584	118	81	77
29	e150	739	227	153	2370	1050	547	656	510	104	77	71
30	142	626	219	150	---	912	478	543	502	539	72	67
31	136	---	210	180	---	753	---	452	---	783	68	---
TOTAL	8545	9673	11160	8255	17411	31765	26228	19770	23349	6003	5633	3303
MEAN	276	322	360	266	600	1025	874	638	778	194	182	110
MAX	561	1370	645	668	4670	2040	1430	1430	2150	783	710	485
MIN	136	128	210	141	126	481	478	275	305	79	68	65

e Estimated.

LACKAWANNA RIVER BASIN

01536000 LACKAWANNA RIVER AT OLD FORGE, PA--Continued

STATISTICS OF MONTHLY MEAN DATA FOR WATER YEARS 1960 - 2000, BY WATER YEAR (WY) (SINCE REGULATION)

	OCT	NOV	DEC	JAN	FEB	MAR	APR	MAY	JUN	JUL	AUG	SEP
MEAN	262	406	485	441	505	823	940	608	361	191	143	178
MAX (WY)	1276	1223	1414	1521	1198	1767	2712	1658	1488	566	432	978
MIN (WY)	1978	1973	1997	1996	1981	1977	1993	1989	1972	1984	1994	1987
MIN (WY)	37.3	45.2	76.2	61.4	88.7	291	353	199	69.8	46.4	45.4	37.8
(WY)	1965	1965	1999	1981	1980	1981	1985	1962	1962	1965	1999	1964

SUMMARY STATISTICS	FOR 1999 CALENDAR YEAR	FOR 2000 WATER YEAR	WATER YEARS 1960 - 2000	
ANNUAL TOTAL	131335	171095		
ANNUAL MEAN	360	467	445	
HIGHEST ANNUAL MEAN			712	1960
LOWEST ANNUAL MEAN			194	1965
HIGHEST DAILY MEAN	2820	Jan 24	4670	Feb 28
LOWEST DAILY MEAN	23	Sep 5	65	Sep 10
ANNUAL SEVEN-DAY MINIMUM	27	Aug 30	73	Sep 5
INSTANTANEOUS PEAK FLOW			6410	Feb 28
INSTANTANEOUS PEAK STAGE			7.84	Feb 28
10 PERCENT EXCEEDS	762		1030	
50 PERCENT EXCEEDS	266		316	
90 PERCENT EXCEEDS	40		103	

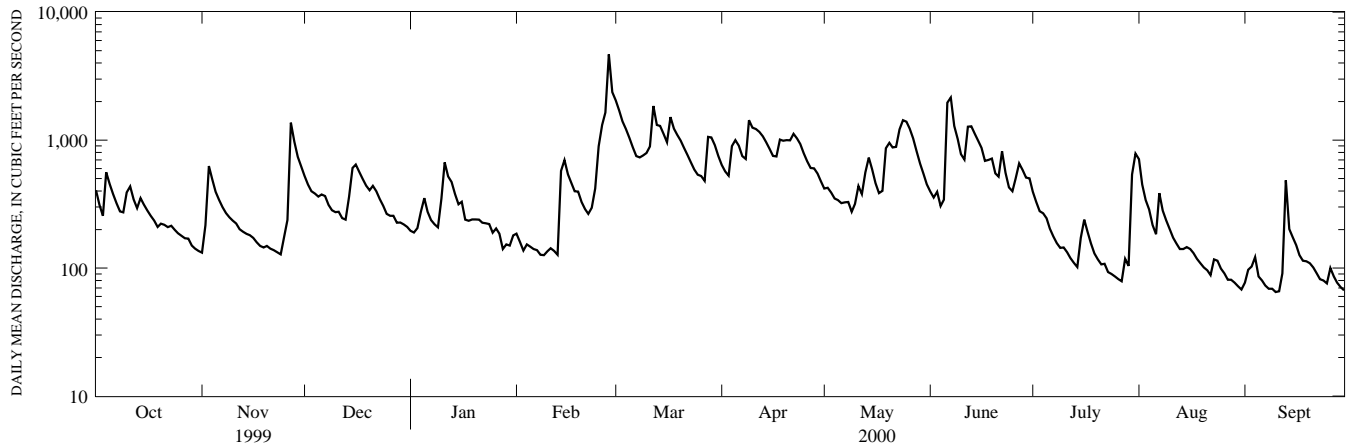
STATISTICS OF MONTHLY MEAN DATA FOR WATER YEARS 1939 - 1959, BY WATER YEAR (WY) (PRIOR TO REGULATION)

	OCT	NOV	DEC	JAN	FEB	MAR	APR	MAY	JUN	JUL	AUG	SEP
MEAN	305	503	600	512	531	986	1195	814	454	360	303	229
MAX (WY)	1618	1199	1260	1047	1263	1652	2614	1750	866	1375	1448	778
MIN (WY)	1956	1956	1939	1949	1939	1945	1958	1947	1946	1947	1955	1945
MIN (WY)	106	122	169	166	160	526	368	262	188	125	130	116
(WY)	1942	1942	1942	1944	1940	1941	1946	1941	1955	1955	1954	1943

SUMMARY STATISTICS WATER YEARS 1939 - 1959

ANNUAL MEAN	566	
HIGHEST ANNUAL MEAN	781	1956
LOWEST ANNUAL MEAN	401	1944
HIGHEST DAILY MEAN	14000	Aug 19 1955
LOWEST DAILY MEAN	73	Sep 26 1943
ANNUAL SEVEN-DAY MINIMUM	87	Oct 8 1943
INSTANTANEOUS PEAK FLOW	a31000	Aug 19 1955
INSTANTANEOUS PEAK STAGE	b20.05	Aug 19 1955
INSTANTANEOUS LOW FLOW	54	Sep 1,2 1957
ANNUAL RUNOFF (CFSM)	1.70	
ANNUAL RUNOFF (INCHES)	23.16	
10 PERCENT EXCEEDS	1200	
50 PERCENT EXCEEDS	340	
90 PERCENT EXCEEDS	138	

a From rating curve extended above 3,800 ft³/s on basis of slope-area measurements at gage heights 15.30 ft, 16.49 ft, and at peak flow.
 b From floodmark.



1-YEAR HYDROGRAPH
 OCTOBER 1, 1999 TO SEPTEMBER 30, 2000