

FISHING CREEK BASIN

01539000 FISHING CREEK NEAR BLOOMSBURG, PA

LOCATION.--Lat 41°04'41", long 76°25'53", Columbia County, Hydrologic Unit 02050107, on left bank 10 ft downstream from Bowmans Mill bridge on SR 4034, 0.8 mi downstream from Green Creek, 0.9 mi west of Orangeville, and 5.5 mi north of Bloomsburg.

DRAINAGE AREA.--274 mi².

PERIOD OF RECORD.--June 1938 to current year.

REVISED RECORDS.--WSP 1202: 1939-42, 1948(P), 1950.

GAGE.--Water-stage recorder. Datum of gage is 543.84 ft above sea level.

REMARKS.--Records good except those for estimated daily discharges, which are poor. Several measurements of water temperature were made during the year. Satellite telemetry at station.

PEAK DISCHARGES FOR CURRENT YEAR.--Peak discharges greater than a base discharge of 4,000 ft³/s and maximum (*):

Date	Time	Discharge ft ³ /s	Gage Height (ft)	Date	Time	Discharge ft ³ /s	Gage Height (ft)
Feb. 28	0700	*4,860	*6.52	July 31	0300	4,280	6.18

**DISCHARGE, CUBIC FEET PER SECOND, WATER YEAR OCTOBER 1999 TO SEPTEMBER 2000
DAILY MEAN VALUES**

DAY	OCT	NOV	DEC	JAN	FEB	MAR	APR	MAY	JUN	JUL	AUG	SEP
1	908	138	270	243	e200	1590	722	414	354	284	1540	192
2	602	138	247	233	e190	1320	651	417	320	251	1810	580
3	458	260	240	241	e190	1020	608	379	293	227	2430	507
4	651	250	235	285	178	838	1700	343	259	225	1230	334
5	668	206	226	e410	168	732	1570	333	291	205	761	257
6	523	188	230	e330	159	642	1210	305	754	180	594	214
7	433	174	239	e290	153	568	970	283	620	161	1170	189
8	371	163	211	e250	e140	545	904	262	438	145	846	169
9	353	158	195	e230	e140	535	1940	243	368	134	696	157
10	493	154	194	e450	e140	497	1490	258	316	129	578	146
11	651	149	226	1170	147	538	1230	470	282	121	541	137
12	513	140	205	839	143	1650	1060	327	609	109	551	140
13	447	141	193	e660	134	1280	894	282	992	102	442	384
14	491	134	404	e520	690	1010	780	273	749	98	380	320
15	442	129	1070	e400	1020	830	695	243	641	170	339	263
16	381	122	883	e350	722	713	641	220	609	207	298	230
17	349	118	725	e310	634	1130	728	205	692	161	259	201
18	318	113	611	e260	539	864	1010	196	600	130	240	180
19	285	108	527	e280	525	776	929	261	543	111	230	169
20	271	107	486	e300	467	695	837	328	456	106	207	178
21	263	114	622	e270	412	1040	1000	301	499	98	186	162
22	243	113	524	e250	388	2910	1470	324	936	159	171	143
23	250	108	460	e230	468	1810	1190	549	603	111	181	133
24	236	103	e410	e230	645	1330	986	1600	473	95	246	135
25	212	114	e390	e240	1080	1090	827	1570	402	88	200	139
26	200	158	e360	e230	1790	987	715	1010	373	82	170	133
27	181	453	348	e220	1760	819	639	758	510	80	153	137
28	168	399	e320	e200	3870	1400	578	625	466	82	145	130
29	158	333	288	e200	2400	1140	515	529	376	112	139	120
30	150	302	272	e210	---	967	457	454	329	148	132	113
31	142	---	263	e200	---	832	---	395	---	2010	124	---
TOTAL	11811	5287	11874	10531	19492	32098	28946	14157	15153	6321	16989	6292
MEAN	381	176	383	340	672	1035	965	457	505	204	548	210
MAX	908	453	1070	1170	3870	2910	1940	1600	992	2010	2430	580
MIN	142	103	193	200	134	497	457	196	259	80	124	113
CFSM	1.39	.64	1.40	1.24	2.45	3.78	3.52	1.67	1.84	.74	2.00	.77
IN.	1.60	.72	1.61	1.43	2.65	4.36	3.93	1.92	2.06	.86	2.31	.85

STATISTICS OF MONTHLY MEAN DATA FOR WATER YEARS 1938 - 2000, BY WATER YEAR (WY)

MEAN	290	457	603	520	572	899	903	611	335	200	163	209
MAX	1589	995	1867	1509	1456	1680	2518	1712	2230	835	548	1286
(WY)	1977	1946	1997	1979	1981	1977	1993	1989	1972	1947	2000	1975
MIN	12.5	16.4	87.4	53.5	128	293	221	127	74.3	30.3	15.5	9.96
(WY)	1965	1965	1999	1981	1940	1981	1946	1941	1939	1964	1964	1964

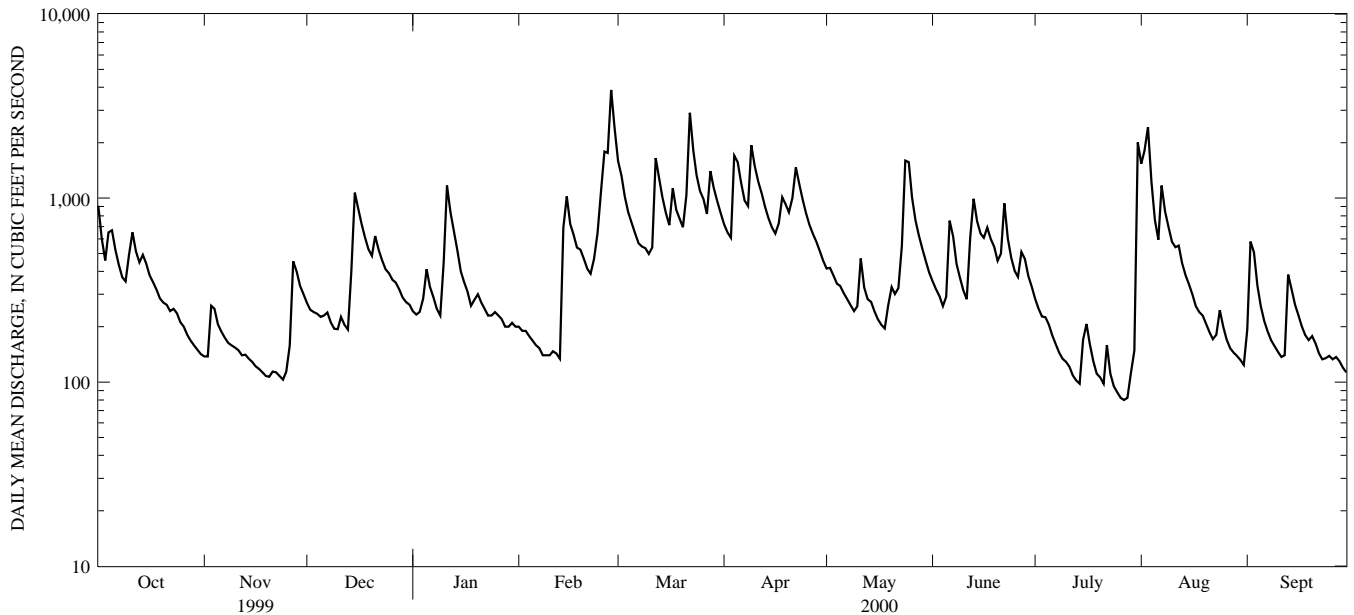
e Estimated.

FISHING CREEK BASIN

01539000 FISHING CREEK NEAR BLOOMSBURG, PA--Continued

SUMMARY STATISTICS	FOR 1999 CALENDAR YEAR		FOR 2000 WATER YEAR		WATER YEARS 1938 - 2000	
ANNUAL TOTAL	143758		178951			
ANNUAL MEAN	394		489		479	
HIGHEST ANNUAL MEAN					739	
LOWEST ANNUAL MEAN					229	
HIGHEST DAILY MEAN	9490	Jan 24	3870	Feb 28	18500	Jun 23 1972
LOWEST DAILY MEAN	14	Aug 12	80	Jul 27	8.4	Sep 12 1964
ANNUAL SEVEN-DAY MINIMUM	15	Aug 6	93	Jul 23	8.7	Sep 12 1964
INSTANTANEOUS PEAK FLOW			4860	Feb 28	a 30900	Jun 22 1972
INSTANTANEOUS PEAK STAGE			6.52	Feb 28	b 15.18	Jun 22 1972
INSTANTANEOUS LOW FLOW					7.6	Jul 19 1939
ANNUAL RUNOFF (CFSM)	1.44		1.78		1.75	
ANNUAL RUNOFF (INCHES)	19.52		24.30		23.77	
10 PERCENT EXCEEDS	800		1030		1080	
50 PERCENT EXCEEDS	240		320		271	
90 PERCENT EXCEEDS	25		134		54	

a From rating curve extended above 9,500 ft³/s on basis of contracted-opening measurement at gage height 12.08 ft.
b From floodmark in gage.



1-YEAR HYDROGRAPH
 OCTOBER 1, 1999 TO SEPTEMBER 30, 2000