

WEST BRANCH SUSQUEHANNA RIVER BASIN

01541500 CLEARFIELD CREEK AT DIMELING, PA

LOCATION.--Lat 40°58'18", long 78°24'22", Clearfield County, Hydrologic Unit 02050201, on right bank at downstream side of highway bridge on SR 2024 at Dimeling, 600 ft downstream from Little Clearfield Creek, and 4.0 mi southeast of Clearfield.

DRAINAGE AREA.--371 mi².

PERIOD OF RECORD.--October 1913 to current year.

REVISED RECORDS.--WSP 756: Drainage area. WSP 891: 1936-39. WSP 1302: 1915-17, 1918-19(M). WSP 1502: 1939. WDR PA-87-2: 1986(M).

GAGE.--Water-stage recorder. Datum of gage is 1,146.08 ft above sea level. Prior to Oct. 17, 1928, nonrecording gage, and Oct. 17, 1928, to Oct. 25, 1967, water-stage recorder at site 200 ft upstream at same datum.

REMARKS.--Records good except those for estimated daily discharges, which are poor. Flow regulated since December 1960 by Glendale Dam (station 01541340) about 25 mi upstream. Several measurements of water temperature were made during the year. Satellite telemetry at station.

DISCHARGE, CUBIC FEET PER SECOND, WATER YEAR OCTOBER 1999 TO SEPTEMBER 2000
DAILY MEAN VALUES

DAY	OCT	NOV	DEC	JAN	FEB	MAR	APR	MAY	JUN	JUL	AUG	SEP
1	325	70	513	e200	e130	1330	469	666	443	172	146	76
2	176	87	428	e190	e120	1360	434	664	407	155	126	76
3	123	541	387	e250	e120	1090	450	599	439	149	124	79
4	146	444	371	349	e120	894	977	519	371	159	223	91
5	172	279	354	427	e120	782	1100	472	331	174	139	93
6	134	223	339	346	e110	683	835	446	393	145	141	85
7	109	192	320	297	e110	601	717	412	465	129	450	70
8	93	169	283	278	e110	546	688	375	366	117	393	64
9	88	155	257	267	e120	505	847	351	303	109	230	62
10	122	146	248	289	e140	471	727	328	266	119	175	62
11	212	138	262	336	e150	491	657	306	241	119	146	72
12	184	130	256	324	e210	816	680	286	237	115	134	112
13	142	122	238	297	e370	688	645	280	262	114	126	146
14	179	116	400	258	e640	575	575	276	539	104	114	119
15	234	112	999	e230	e1500	526	540	251	395	106	104	118
16	183	106	734	e220	e1100	504	507	231	546	110	98	101
17	149	100	610	e200	e1000	864	668	219	407	116	94	96
18	132	94	522	e180	e800	794	1240	220	390	105	91	95
19	120	90	461	e140	e1100	664	1160	304	420	94	90	86
20	111	91	429	e170	e900	611	963	419	326	91	88	77
21	104	96	434	e220	e740	1110	2180	378	319	89	81	79
22	98	97	398	e170	e700	2390	4190	299	476	88	76	82
23	97	94	344	e150	923	1620	3820	295	376	84	81	76
24	100	91	e270	e170	1320	1320	2700	796	287	81	106	167
25	94	108	e220	e190	1830	1120	2020	804	249	77	148	201
26	88	1650	e180	e170	1890	970	1590	522	232	76	124	164
27	85	2680	e160	e160	1540	819	1310	420	242	75	95	175
28	80	1290	e150	e150	2050	747	1090	434	235	80	89	170
29	77	834	e180	e140	1590	674	903	779	206	193	88	132
30	74	640	e210	e140	---	601	767	696	189	192	83	112
31	70	---	e210	e140	---	527	---	519	---	154	79	---
TOTAL	4101	10985	11167	7048	21553	26693	35449	13566	10358	3691	4282	3138
MEAN	132	366	360	227	743	861	1182	438	345	119	138	105
MAX	325	2680	999	427	2050	2390	4190	804	546	193	450	201
MIN	70	70	150	140	110	471	434	219	189	75	76	62

e Estimated.

WEST BRANCH SUSQUEHANNA RIVER BASIN

01541500 CLEARFIELD CREEK AT DIMELING, PA--Continued

STATISTICS OF MONTHLY MEAN DATA FOR WATER YEARS 1961 - 2000, BY WATER YEAR (WY) (SINCE REGULATION)

	OCT	NOV	DEC	JAN	FEB	MAR	APR	MAY	JUN	JUL	AUG	SEP
MEAN	270	483	625	639	842	1283	1082	729	436	296	201	237
MAX	1024	1603	1693	1549	1708	2578	2786	1800	2522	1189	635	1393
(WY)	1980	1998	1973	1996	1976	1979	1993	1978	1972	1977	1984	1996
MIN	41.1	73.3	68.4	139	154	318	378	248	90.3	46.1	55.3	43.4
(WY)	1964	1965	1961	1961	1963	1969	1968	1976	1965	1965	1965	1964

SUMMARY STATISTICS	FOR 1999 CALENDAR YEAR	FOR 2000 WATER YEAR	WATER YEARS 1961 - 2000
ANNUAL TOTAL	154828	152031	
ANNUAL MEAN	424	415	592
HIGHEST ANNUAL MEAN			866
LOWEST ANNUAL MEAN			350
HIGHEST DAILY MEAN	e5500	Jan 24	4190
LOWEST DAILY MEAN	43	Aug 12	62
ANNUAL SEVEN-DAY MINIMUM	49	Aug 6	73
INSTANTANEOUS PEAK FLOW			a4360
INSTANTANEOUS PEAK STAGE			c11.82
10 PERCENT EXCEEDS	1150		935
50 PERCENT EXCEEDS	184		230
90 PERCENT EXCEEDS	75		88

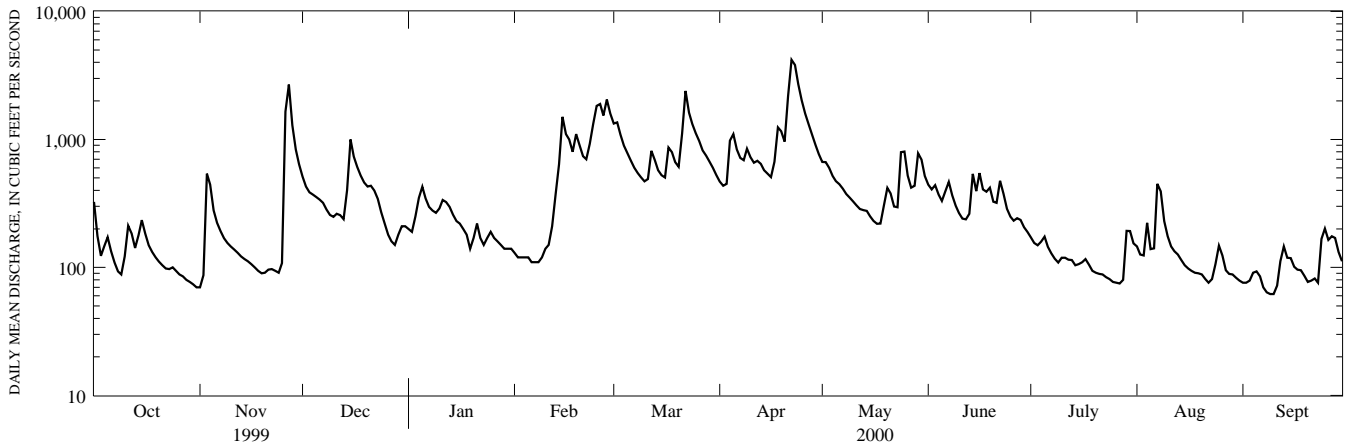
STATISTICS OF MONTHLY MEAN DATA FOR WATER YEARS 1914 - 1960, BY WATER YEAR (WY) (PRIOR TO REGULATION)

	OCT	NOV	DEC	JAN	FEB	MAR	APR	MAY	JUN	JUL	AUG	SEP
MEAN	253	386	557	764	789	1284	1059	781	457	241	194	152
MAX	876	1355	1533	2152	1996	4153	2470	1656	1931	1233	901	1370
(WY)	1928	1922	1924	1937	1915	1936	1940	1960	1946	1956	1956	1926
MIN	16.9	26.0	55.1	34.3	103	390	245	121	102	68.7	24.9	22.3
(WY)	1931	1931	1931	1931	1934	1915	1925	1926	1949	1936	1930	1932

SUMMARY STATISTICS WATER YEARS 1914 - 1960

ANNUAL MEAN	576	
HIGHEST ANNUAL MEAN	921	1928
LOWEST ANNUAL MEAN	309	1931
HIGHEST DAILY MEAN	27100	Mar 18 1936
LOWEST DAILY MEAN	7.1	Oct 1 1925
ANNUAL SEVEN-DAY MINIMUM	13	Oct 4 1925
INSTANTANEOUS PEAK FLOW	b30600	Mar 18 1936
INSTANTANEOUS PEAK STAGE	d18.49	Mar 18 1936
INSTANTANEOUS LOW FLOW	6.0	Oct 1,9 1925
ANNUAL RUNOFF (CFSM)	1.55	
ANNUAL RUNOFF (INCHES)	21.08	
10 PERCENT EXCEEDS	1380	
50 PERCENT EXCEEDS	278	
90 PERCENT EXCEEDS	54	

- a Corresponding gage height, 8.42 ft.
- b From rating curve extended above 15,000 ft³/s.
- c Backwater from ice.
- d From floodmark in gage.
- e Estimated.



1-YEAR HYDROGRAPH
OCTOBER 1, 1999 TO SEPTEMBER 30, 2000