

WEST BRANCH SUSQUEHANNA RIVER BASIN

01545000 KETTLE CREEK NEAR WESTPORT, PA

LOCATION.--Lat 41°19'10", long 77°52'27", Clinton County, Hydrologic Unit 02050203, on left bank on SR 4001, 0.4 mi upstream from Short Bond Run, 3.5 mi upstream from mouth and Westport, and 5.0 mi downstream from Alvin R. Bush Dam (Kettle Creek Lake).

DRAINAGE AREA.--233 mi².

PERIOD OF RECORD.--October 1954 to current year.

GAGE.--Water-stage recorder. Datum of gage is 728.24 ft above sea level. Prior to Oct. 14, 1956, nonrecording gage at same site and datum.

REMARKS.--Records good except those for estimated daily discharges, which are poor. Flow regulated since February 1962 by Alvin R. Bush Dam (station 01544800). Several measurements of water temperature were made during the year. Satellite telemetry at station.

DISCHARGE, CUBIC FEET PER SECOND, WATER YEAR OCTOBER 1999 TO SEPTEMBER 2000
DAILY MEAN VALUES

DAY	OCT	NOV	DEC	JAN	FEB	MAR	APR	MAY	JUN	JUL	AUG	SEP
1	146	23	405	192	e110	1490	237	333	282	193	51	17
2	54	42	313	154	e98	1140	229	313	248	163	50	17
3	87	76	310	154	e90	818	357	301	228	164	49	17
4	78	125	242	213	e94	653	2060	249	178	154	44	17
5	39	94	210	283	e98	591	2240	235	222	133	37	17
6	39	83	217	322	e82	493	1560	223	244	118	38	15
7	43	75	215	352	e76	429	1100	198	206	102	63	11
8	46	64	178	355	e60	384	937	186	165	93	72	8.9
9	43	69	176	333	e56	344	949	177	156	92	48	8.5
10	42	69	166	354	e80	314	1060	174	147	92	37	8.5
11	40	64	164	373	e98	287	896	170	141	92	37	8.9
12	39	62	170	364	e88	322	771	159	183	75	37	10
13	41	54	165	349	e72	326	596	157	202	65	37	68
14	44	51	238	330	e120	313	507	157	227	72	33	84
15	38	47	626	255	e220	329	456	138	269	77	25	50
16	41	47	805	294	e250	342	396	122	772	74	29	32
17	41	47	750	e290	e230	516	469	122	828	72	36	18
18	37	47	684	e150	234	658	603	121	843	64	32	16
19	32	43	556	e220	228	738	857	647	1090	63	24	17
20	32	27	472	271	202	692	963	899	1060	57	22	19
21	29	34	452	e200	182	633	1010	805	867	49	21	20
22	23	44	384	e130	172	610	1230	633	810	50	21	19
23	25	52	367	e150	209	605	1660	584	598	48	21	19
24	27	52	353	e200	361	628	1480	1520	489	45	19	22
25	30	54	283	e180	894	607	1150	1870	380	41	19	23
26	30	658	256	e130	1990	537	906	1440	355	40	23	45
27	28	1890	311	e140	1960	461	704	1020	342	37	36	35
28	25	1320	257	e94	2550	409	560	726	306	39	30	28
29	20	855	217	e64	2080	365	461	537	246	40	24	28
30	10	551	195	e110	---	308	405	424	227	48	22	22
31	9.5	---	204	e130	---	258	---	342	---	52	20	---
TOTAL	1258.5	6719	10341	7136	12984	16600	26809	14982	12311	2504	1057	720.8
MEAN	40.6	224	334	230	448	535	894	483	410	80.8	34.1	24.0
MAX	146	1890	805	373	2550	1490	2240	1870	1090	193	72	84
MIN	9.5	23	164	64	56	258	229	121	141	37	19	8.5

e Estimated.

WEST BRANCH SUSQUEHANNA RIVER BASIN

01545000 KETTLE CREEK NEAR WESTPORT, PA--Continued

STATISTICS OF MONTHLY MEAN DATA FOR WATER YEARS 1962 - 2000, BY WATER YEAR (WY) (SINCE REGULATION)

	OCT	NOV	DEC	JAN	FEB	MAR	APR	MAY	JUN	JUL	AUG	SEP
MEAN	192	360	417	355	455	738	811	473	275	148	101	121
MAX	1096	1060	954	857	1330	1739	2453	920	1278	677	927	1058
(WY)	1991	1971	1973	1979	1981	1979	1993	1996	1972	1972	1994	1975
MIN	13.5	5.37	55.4	63.8	78.8	167	309	141	39.8	8.06	7.69	13.0
(WY)	1965	1965	1999	1981	1963	1968	1976	1999	1999	1962	1962	1991

SUMMARY STATISTICS	FOR 1999 CALENDAR YEAR		FOR 2000 WATER YEAR		WATER YEARS 1962 - 2000	
ANNUAL TOTAL	96296.8		113422.3			
ANNUAL MEAN	264		310		370	
HIGHEST ANNUAL MEAN					575	
LOWEST ANNUAL MEAN					223	
HIGHEST DAILY MEAN	2800		Jan 25		2550	
LOWEST DAILY MEAN	9.5		Oct 31		8.5	
ANNUAL SEVEN-DAY MINIMUM	9.9		Sep 9		10	
INSTANTANEOUS PEAK FLOW					3090	
INSTANTANEOUS PEAK STAGE					6.51	
INSTANTANEOUS LOW FLOW					10.17	
10 PERCENT EXCEEDS	686		821		876	
50 PERCENT EXCEEDS	78		164		180	
90 PERCENT EXCEEDS	12		24		29	

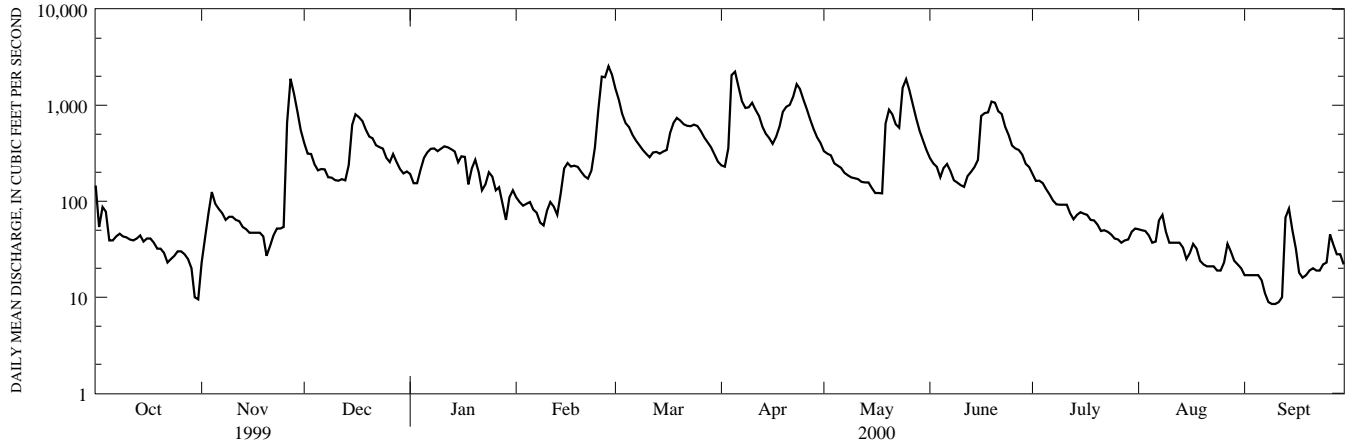
STATISTICS OF MONTHLY MEAN DATA FOR WATER YEARS 1955 - 1961, BY WATER YEAR (WY) (PRIOR TO REGULATION)

	OCT	NOV	DEC	JAN	FEB	MAR	APR	MAY	JUN	JUL	AUG	SEP
MEAN	192	247	373	297	387	837	1066	541	204	131	120	72.8
MAX	709	647	708	564	713	1373	1496	1103	631	318	276	177
(WY)	1956	1960	1957	1959	1961	1955	1958	1960	1960	1958	1956	1958
MIN	23.7	41.3	27.0	27.6	127	394	411	151	63.9	25.1	16.9	24.3
(WY)	1958	1961	1961	1961	1958	1960	1955	1955	1955	1955	1957	1957

SUMMARY STATISTICS WATER YEARS 1955 - 1961

ANNUAL MEAN	372
HIGHEST ANNUAL MEAN	492
LOWEST ANNUAL MEAN	266
HIGHEST DAILY MEAN	5970
LOWEST DAILY MEAN	8.9
ANNUAL SEVEN-DAY MINIMUM	10
INSTANTANEOUS PEAK FLOW	b7970
INSTANTANEOUS PEAK STAGE	c13.31
INSTANTANEOUS LOW FLOW	8.9
ANNUAL RUNOFF (CFSM)	1.60
ANNUAL RUNOFF (INCHES)	21.69
10 PERCENT EXCEEDS	942
50 PERCENT EXCEEDS	160
90 PERCENT EXCEEDS	26

- a Also Nov. 6, 12, 1964.
- b Gage height 10.48 ft.
- c Backwater from ice.



1-YEAR HYDROGRAPH
OCTOBER 1, 1999 TO SEPTEMBER 30, 2000