

EAST MAHANTANGO CREEK BASIN

01555400 EAST MAHANTANGO CREEK AT KLINGERSTOWN, PA
(National Water-Quality Assessment Station)

LOCATION.--Lat 40°39'48", long 76°41'30", Schuylkill County, Hydrologic Unit 02050301, on left bank at Klingerstown, 400 ft upstream from highway bridge on State Route 4002, and 0.2 mi upstream from Pine Creek.

DRAINAGE AREA.--44.7 mi².

WATER-DISCHARGE RECORDS

PERIOD OF RECORD.--October 1992 to December 1994, October 1996 to September 2000 (discontinued).

GAGE.--Water-stage recorder. Datum of gage is 520 ft above sea level, from topographic map.

REMARKS.--Records good except those for estimated daily discharges, which are poor. Satellite telemetry at station.

PEAK DISCHARGES FOR CURRENT YEAR.--Peak discharges greater than a base discharge of 1,000 ft³/s and maximum (*):

Date	Time	Discharge ft ³ /s	Gage Height (ft)	Date	Time	Discharge ft ³ /s	Gage Height (ft)
Feb. 14	----	Ice Jam	*5.02	Mar. 22	0145	*1,270	4.78

DISCHARGE, CUBIC FEET PER SECOND, WATER YEAR OCTOBER 1999 TO SEPTEMBER 2000
DAILY MEAN VALUES

DAY	OCT	NOV	DEC	JAN	FEB	MAR	APR	MAY	JUN	JUL	AUG	SEP
1	336	15	40	22	e36	197	110	41	39	34	18	10
2	160	32	37	21	e27	150	92	41	39	29	14	16
3	98	83	35	23	e22	114	78	35	32	27	15	10
4	93	49	33	26	e20	94	119	32	29	28	20	8.0
5	89	39	30	32	e18	79	100	31	27	24	12	5.9
6	69	35	37	21	e16	65	81	28	121	20	11	4.6
7	57	31	32	20	e23	57	69	26	110	18	14	4.2
8	48	28	26	19	e16	52	76	25	83	16	11	4.0
9	44	26	24	19	e13	48	328	23	65	15	8.8	4.0
10	79	26	25	40	e14	43	310	43	51	15	8.1	3.8
11	88	24	25	94	e16	48	222	59	42	14	6.9	3.8
12	78	21	22	80	e16	153	165	43	87	12	7.7	7.1
13	67	20	22	70	e11	133	123	51	114	11	8.6	69
14	78	20	184	61	e120	112	102	80	120	11	7.5	26
15	56	19	432	e60	e200	97	88	52	99	26	6.8	19
16	49	18	237	e48	e150	87	78	44	79	22	11	14
17	45	16	150	e48	131	144	89	39	60	15	6.5	11
18	40	15	110	e50	101	133	93	35	54	12	5.7	9.5
19	34	14	85	e48	84	121	84	44	48	10	6.4	11
20	35	14	74	e40	66	103	78	53	39	10	5.2	34
21	31	15	69	e38	56	321	94	53	68	9.6	4.6	21
22	29	13	56	e36	62	958	128	51	229	13	4.2	15
23	28	13	47	e46	111	525	118	52	121	9.6	3.7	12
24	25	13	43	e45	141	317	102	99	84	8.6	6.0	12
25	21	25	e42	e42	170	229	88	149	66	8.8	5.9	11
26	20	25	e41	e33	178	185	77	113	77	8.2	4.4	17
27	19	66	e36	e32	153	149	70	90	77	8.6	3.8	14
28	17	57	e32	e31	412	248	62	76	58	7.2	11	11
29	17	51	e27	e29	278	214	53	63	51	12	6.8	9.4
30	16	45	e27	e27	---	175	47	52	43	11	5.0	8.6
31	15	---	e22	e32	---	137	---	44	---	12	4.3	---
TOTAL	1881	868	2102	1233	2661	5488	3324	1667	2212	477.6	263.9	405.9
MEAN	60.7	28.9	67.8	39.8	91.8	177	111	53.8	73.7	15.4	8.51	13.5
MAX	336	83	432	94	412	958	328	149	229	34	20	69
MIN	15	13	22	19	11	43	47	23	27	7.2	3.7	3.8
CFSM	1.36	.65	1.52	.89	2.05	3.96	2.48	1.20	1.65	.34	.19	.30
IN.	1.57	.72	1.75	1.03	2.21	4.57	2.77	1.39	1.84	.40	.22	.34

STATISTICS OF MONTHLY MEAN DATA FOR WATER YEARS 1993 - 2000, BY WATER YEAR (WY)

MEAN	43.9	74.0	97.1	101	94.8	171	134	62.5	39.8	15.6	15.3	33.8
MAX	145	133	242	223	224	327	294	153	73.7	24.7	38.5	87.7
(WY)	1997	1993	1997	1998	1998	1994	1993	1998	2000	1994	1994	1999
MIN	8.01	4.32	3.43	20.9	29.2	66.5	43.3	15.1	6.33	1.72	5.87	4.07
(WY)	1998	1999	1999	1994	1993	1997	1997	1997	1999	1999	1998	1998

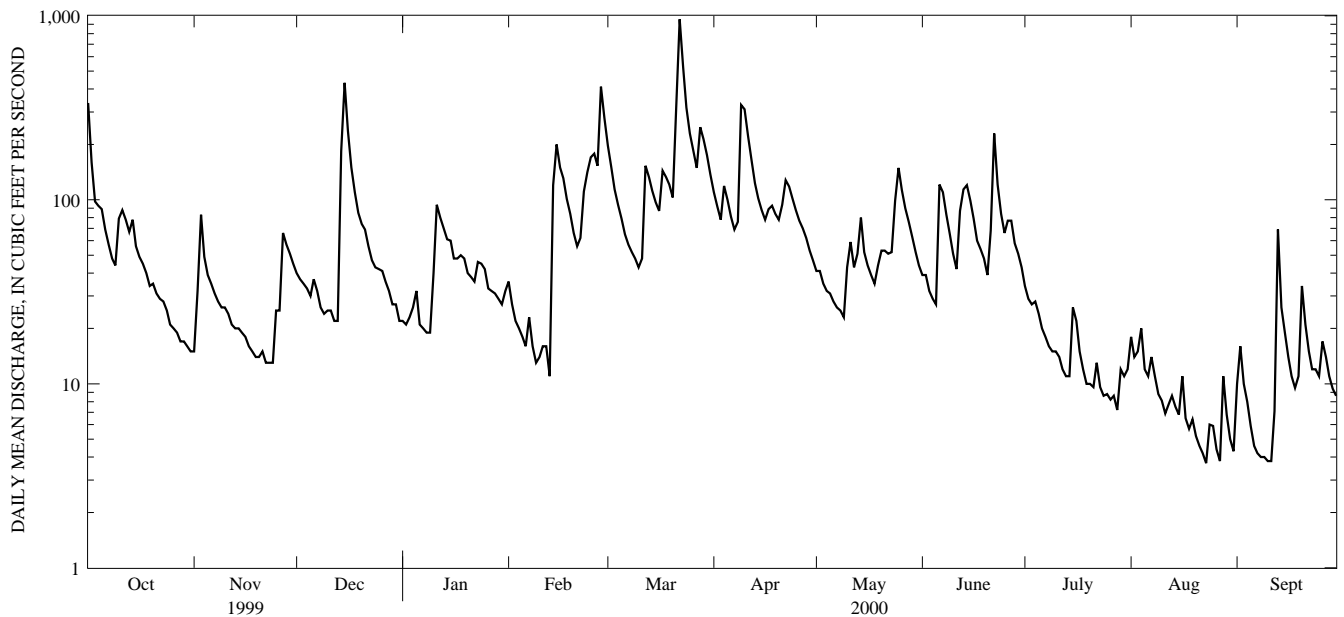
e Estimated.

EAST MAHANTANGO CREEK BASIN

01555400 EAST MAHANTANGO CREEK AT KLINGERSTOWN, PA--Continued

SUMMARY STATISTICS	FOR 1999 CALENDAR YEAR		FOR 2000 WATER YEAR		WATER YEARS 1993 - 2000	
ANNUAL TOTAL	19630.30		22583.4			
ANNUAL MEAN	53.8		61.7		73.8	
HIGHEST ANNUAL MEAN					93.6	
LOWEST ANNUAL MEAN					42.0	
HIGHEST DAILY MEAN	e800 Jan 18		958 Mar 22		2290 Nov 28 1993	
LOWEST DAILY MEAN	e.20 Aug 7,9		3.7 Aug 23		.20 Aug 7 1999	
ANNUAL SEVEN-DAY MINIMUM	a.36 Aug 3		4.3 Sep 5		.36 Aug 3 1999	
INSTANTANEOUS PEAK FLOW			bc1270 Mar 22		cd3470 Nov 28 1993	
INSTANTANEOUS PEAK STAGE			f5.02 Feb 14		f9.81 Jan 18 1999	
INSTANTANEOUS LOW FLOW			3.5 Aug 22,23,27		e.20 Aug 9 1999	
ANNUAL RUNOFF (CFSM)	1.20		1.38		1.65	
ANNUAL RUNOFF (INCHES)	16.34		18.79		22.42	
10 PERCENT EXCEEDS	102		133		172	
50 PERCENT EXCEEDS	30		37		34	
90 PERCENT EXCEEDS	1.6		9.2		5.0	

- a Computed using estimated daily discharges.
- b Gage height 4.78 ft.
- c From rating curve extended above 450 ft³/s.
- d Gage height 9.07 ft.
- e Estimated.
- f Ice jam.



1-YEAR HYDROGRAPH
OCTOBER 1, 1999 TO SEPTEMBER 30, 2000

EAST MAHANTANGO CREEK BASIN

01555400 EAST MAHANTANGO CREEK AT KLINGERSTOWN, PA--Continued
(National Water-Quality Assessment Station)

WATER-QUALITY RECORDS

PERIOD OF RECORD.--March 1993 to September 1995, April 1997 to September 2000 (discontinued).

PERIOD OF DAILY RECORD.--

SPECIFIC CONDUCTANCE: April 1993 to December 1994.

TEMPERATURE: April 1993 to December 1994, April 1997 to September 2000 (discontinued).

INSTRUMENTATION.--Daily record measured and collected with in-situ probes and electronic data logger.

REMARKS.--Water temperature records are rated good. From October 1999 to March 2000, water-quality samples were collected monthly for nutrients, major ions, and suspended sediment, and from April to September 2000, samples were collected semi-monthly for pesticides and monthly for nutrients, major ions, and suspended sediment. Habitat characterization and ecological samples for invertebrates, algae, moss, chlorophyll-a, chlorophyll-b, and periphyton biomass were collected June 29. Ecological data shown in this report include chlorophyll-a and chlorophyll-b.

Quality-control data for sequentially-collected replicate samples using natural water are shown for April 11, 2000 at 0921 (pesticides) and June 29, 2000 at 0921 (nutrients, major ions, and suspended sediment).

The remark code "E" indicates an estimated value with uncertain accuracy and precision for the analyte. Some values for "dissolved" parameters exceed values for the corresponding "total" parameter. These results are within the limits of analytical precision and methods.

EXTREMES FOR PERIOD OF DAILY RECORD.--

SPECIFIC CONDUCTANCE: Maximum, 206 microsiemens, Sept. 20, 1993; minimum, 50 microsiemens, Sept. 17, 1994.

TEMPERATURE: Maximum, 31.0°C, July 5, 6, 1999; minimum, 0.0°C, many days during winters.

EXTREMES FOR CURRENT YEAR.--

WATER TEMPERATURE: Maximum, 26.0°C, Aug. 9, 10; minimum, 0.0°C, many days during winter.

WATER-QUALITY DATA, WATER YEAR OCTOBER 1999 TO SEPTEMBER 2000

DATE	TIME	AGENCY ANA- LYZING SAMPLE (CODE NUMBER) (000028)	AGENCY COL- LECTING SAMPLE (CODE NUMBER) (000027)	DIS- CHARGE, INST. CUBIC FEET PER SECOND (000061)	BARO- METRIC PRES- SURE (MM OF HG) (000025)	OXYGEN, DIS- SOLVED (PER- CENT SATUR- ATION) (00301)	OXYGEN, DIS- SOLVED (MG/L) (00300)	PH WATER WHOLE FIELD (STAND- ARD UNITS) (00400)	SPE- CIFIC CON- DUCT- ANCE (µS/CM) (00095)	TEMPER- ATURE AIR (DEG C) (00020)	TEMPER- ATURE WATER (DEG C) (00010)	HARD- NESS TOTAL (MG/L AS CACO3) (00900)
OCT												
27...	0930	80020	1028	19	742	96	11.3	7.7	165	3.5	7.3	59
NOV												
23...	0900	80020	1028	13	745	99	10.7	7.8	150	14.9	10.9	54
DEC												
21...	0940	80020	1028	70	744	91	11.5	7.6	148	1.5	4.6	52
FEB												
02...	0945	80020	1028	E27	--	--	12.9	7.3	139	--	-.1	47
29...	1000	80020	1028	284	744	97	12.1	7.0	160	9.7	4.9	55
MAR												
28...	0910	80020	1028	301	718	97	10.7	7.1	130	10.6	8.5	45
APR												
11...	0920	80020	1028	230	752	90	10.7	7.0	153	4.2	7.3	--
11...	0921	80020	1028	--	--	--	--	--	--	--	--	--
25...	0920	80020	1028	90	734	105	11.2	7.8	137	11.9	10.9	48
MAY												
09...	0850	80020	1028	24	732	95	8.3	7.5	128	20.4	19.8	--
23...	0930	80020	1028	50	732	99	9.9	7.6	147	15.8	13.3	51
JUN												
13...	0940	80020	1028	114	--	--	8.7	7.3	196	16.1	16.4	--
26...	1100	80020	1028	--	--	--	--	--	--	--	--	--
29...	0920	80020	1028	51	735	89	8.0	7.2	163	18.1	18.5	60
29...	0921	80020	1028	--	--	--	--	--	--	--	--	60
JUL												
11...	0945	80020	1028	14	--	--	8.0	7.4	148	21.8	21.2	--
25...	0930	80020	1028	8.9	743	96	8.8	7.8	152	17.6	18.2	55
AUG												
08...	0915	80020	1028	11	737	91	7.8	7.6	165	23.0	21.3	--
22...	0920	80020	1028	4.4	745	94	9.1	7.8	153	14.7	15.9	53
SEP												
12...	0900	80020	1028	4.8	737	87	7.6	7.7	150	20.6	20.0	--
26...	0950	80020	1028	19	735	93	9.6	7.9	174	9.5	12.4	67

EAST MAHANTANGO CREEK BASIN

01555400 EAST MAHANTANGO CREEK AT KLINGERSTOWN, PA--Continued

WATER-QUALITY DATA, WATER YEAR OCTOBER 1999 TO SEPTEMBER 2000

DATE	HARD- NESS NONCARB DISSOLV FLD. AS CACO3 (MG/L) (00904)	CALCIUM DIS- SOLVED (MG/L AS CA) (00915)	MAGNE- SIUM, DIS- SOLVED (MG/L AS MG) (00925)	POTAS- SIUM, DIS- SOLVED (MG/L AS K) (00935)	SODIUM AD- SORP- TION RATIO (00931)	SODIUM, DIS- SOLVED (MG/L AS NA) (00930)	SODIUM PERCENT (00932)	ALKA- LINITY WAT DIS FIX END FIELD CAC03 (MG/L) (39036)	ALKA- LINITY WAT DIS TOT IT FIELD (MG/L AS CAC03) (39086)	BICAR- BONATE WAT.DIS FET FIELD HCO3 (MG/L) (29804)	BICAR- BONATE WATER DIS IT FIELD (MG/L AS HCO3) (00453)	CAR- BONATE WAT.DIS FET FIELD CO3 (MG/L) (29807)
OCT 27...	39	14.1	5.79	2.2	.3	5.0	15	22	21	27	25	.0
NOV 23...	38	13.1	5.23	1.9	.3	5.1	16	18	16	22	20	.0
DEC 21...	43	12.1	5.18	1.9	.3	4.3	15	9.5	9	12	11	.0
FEB 02...	34	11.1	4.68	1.4	.3	4.7	17	14	13	17	16	.0
29...	44	12.8	5.62	2.0	.2	4.2	14	12	11	15	13	.0
MAR 28...	29	10.9	4.20	2.2	.2	3.7	14	17	16	21	19	.0
APR 11...	--	--	--	--	--	--	--	10	9	12	11	.0
11...	--	--	--	--	--	--	--	--	--	--	--	--
25...	35	11.1	4.85	1.5	.2	4.0	15	13	13	16	16	.0
MAY 09...	--	--	--	--	--	--	--	26	24	31	29	.0
23...	34	12.2	4.99	1.7	.3	4.2	15	19	18	24	21	.0
JUN 13...	--	--	--	--	--	--	--	22	20	26	24	.0
26...	--	--	--	--	--	--	--	--	--	--	--	--
29...	40	14.2	5.88	2.1	.3	4.6	14	21	20	26	24	.0
29...	39	14.2	5.87	2.1	.3	4.6	14	22	21	27	25	.0
JUL 11...	--	--	--	--	--	--	--	25	23	30	28	.0
25...	25	13.3	5.26	2.2	.3	5.0	16	32	30	39	37	.0
AUG 08...	--	--	--	--	--	--	--	36	34	44	42	.0
22...	17	13.0	5.10	2.2	.3	5.4	17	37	36	45	44	.0
SEP 12...	--	--	--	--	--	--	--	38	37	46	45	.0
26...	35	16.7	5.98	2.9	.3	5.5	14	33	31	40	38	.0
DATE	CAR- BONATE WATER DIS IT FIELD (MG/L AS CO3) (00452)	CHLO- RIDE, DIS- SOLVED (MG/L AS CL) (00940)	FLUO- RIDE, DIS- SOLVED (MG/L AS F) (00950)	SILICA, DIS- SOLVED (MG/L AS SIO2) (00955)	SULFATE DIS- SOLVED (MG/L AS SO4) (00945)	NITRO- GEN,AM- MONIA + ORGANIC DIS. (MG/L AS N) (00623)	NITRO- GEN,AM- MONIA + ORGANIC TOTAL (MG/L AS N) (00625)	NITRO- GEN, AMMONIA DIS- SOLVED (MG/L AS N) (00608)	NITRO- GEN, NITRATE DIS- SOLVED (MG/L AS N) (00618)	NITRO- GEN, ORGANIC DIS- SOLVED (MG/L AS N) (00607)	NITRO- GEN, TOTAL (MG/L AS N) (00600)	NITRO- GEN, AMMONIA DIS- SOLVED (MG/L AS NH4) (71846)
OCT 27...	0	9.8	<.1	2.8	12.0	.16	.15	<.020	--	--	6.2	--
NOV 23...	0	9.1	<.1	.6	11.2	.14	.26	<.020	--	--	5.2	--
DEC 21...	0	8.7	<.1	6.1	12.4	.23	.23	<.020	--	--	7.2	--
FEB 02...	0	9.1	<.1	5.8	10.8	.12	.15	<.020	--	--	5.9	--
29...	0	9.6	<.1	5.7	12.7	.18	.51	.022	--	.16	9.0	.03
MAR 28...	0	7.8	<.1	4.5	11.4	.39	.93	.037	--	.35	5.6	.05
APR 11...	0	--	--	--	--	--	--	--	--	--	--	--
11...	--	--	--	--	--	--	--	--	--	--	--	--
25...	0	7.5	<.1	3.0	11.5	.19	.29	<.020	6.21	--	6.5	--
MAY 09...	0	--	--	--	--	--	--	--	--	--	--	--
23...	0	8.6	<.1	5.7	10.3	.25	.41	.034	5.75	.22	6.2	.04
JUN 13...	0	--	--	--	--	--	--	--	--	--	--	--
26...	--	--	--	--	--	--	--	--	--	--	--	--
29...	0	9.0	<.1	6.0	11.3	.20	.43	<.020	5.44	--	5.9	--
29...	0	9.0	<.1	6.1	11.2	.22	.38	<.020	5.61	--	6.0	--
JUL 11...	0	--	--	--	--	--	--	--	--	--	--	--
25...	0	9.0	<.1	3.8	9.8	.23	.32	<.020	--	--	3.8	--
AUG 08...	0	--	--	--	--	--	--	--	--	--	--	--
22...	0	9.6	<.1	3.3	9.1	.23	.39	<.020	--	--	2.6	--
SEP 12...	0	--	--	--	--	--	--	--	--	--	--	--
26...	0	10.2	<.1	5.0	11.7	.22	.29	<.020	--	--	4.9	--

EAST MAHANTANGO CREEK BASIN

01555400 EAST MAHANTANGO CREEK AT KLINGERSTOWN, PA--Continued

WATER-QUALITY DATA, WATER YEAR OCTOBER 1999 TO SEPTEMBER 2000

DATE	NITRO- GEN DIS- SOLVED (MG/L AS N) (00602)	NITRO- GEN, NITRATE DIS- SOLVED (MG/L AS NO3) (71851)	NITRO- GEN, NO2+NO3 DIS- SOLVED (MG/L AS N) (00631)	NITRO- GEN, NITRITE DIS- SOLVED (MG/L AS NO2) (71856)	NITRO- GEN, NITRITE DIS- SOLVED (MG/L AS N) (00613)	NITRO- GEN, NITRITE DIS- SOLVED (MG/L AS N) (00605)	PHOS- PHATE, ORTHO, DIS- SOLVED (MG/L AS PO4) (00660)	PHOS- PHORUS DIS- SOLVED (MG/L AS P) (00666)	PHOS- PHORUS ORTHO, DIS- SOLVED (MG/L AS P) (00671)	PHOS- PHORUS TOTAL (MG/L AS P) (00665)	SOLIDS, DIS- SOLVED (TONS PER AC-FT) (70303)	SOLIDS, DIS- SOLVED (TONS PER DAY) (70302)
OCT 27...	6.2	--	6.03	--	<.010	--	--	<.006	<.010	.009	.13	4.98
NOV 23...	5.1	--	4.98	--	<.010	--	.034	.006	.011	.009	.11	2.81
DEC 21...	7.2	--	6.96	--	<.010	--	--	.018	<.010	.023	.13	17.6
FEB 02...	5.9	--	5.79	--	<.010	--	--	.007	<.010	.012	.11	--
29...	8.6	--	8.46	--	<.010	.49	.061	.029	.020	.072	.14	77.4
MAR 28...	5.0	--	4.66	--	<.010	.89	.150	.066	.049	.191	.11	65.0
APR 11...	--	--	--	--	--	--	--	--	--	--	--	--
11...	--	--	--	--	--	--	--	--	--	--	--	--
25...	6.4	27.5	6.22	.036	.011	--	--	.007	<.010	.013	.12	20.9
MAY 09...	--	--	--	--	--	--	--	--	--	--	--	--
23...	6.0	25.4	5.77	.085	.026	.38	.052	.026	.017	.047	.13	13.4
JUN 13...	--	--	--	--	--	--	--	--	--	--	--	--
26...	--	--	--	--	--	--	--	--	--	--	--	--
29...	5.7	24.1	5.45	.036	.011	--	.043	.024	.014	.064	.17	17.1
29...	5.8	24.8	5.62	.039	.012	--	.049	.025	.016	.064	.16	19.5
JUL 11...	--	--	--	--	--	--	--	--	--	--	--	--
25...	3.7	--	3.47	--	<.010	--	.071	.026	.023	.042	.13	2.31
AUG 08...	--	--	--	--	--	--	--	--	--	--	--	--
22...	2.5	--	2.22	--	<.010	--	.055	.030	.018	.047	.12	1.07
SEP 12...	--	--	--	--	--	--	--	--	--	--	--	--
26...	4.8	--	4.57	--	<.010	--	.058	.026	.019	.052	.14	5.23
DATE	SOLIDS, RESIDUE AT 180 DEG. C DIS- SOLVED (MG/L) (70300)	SOLIDS, SUM OF CONSTI- TUENTS, DIS- SOLVED (MG/L) (70301)	CHLOR-A PERI- PHYTON CHROMO- GRAPHIC FLUOROM (MG/M ²) (70957)	CHLOR-B PERI- PHYTON CHROMO- GRAPHIC FLUOROM (MG/M ²) (70958)	IRON, DIS- SOLVED (UG/L AS FE) (01046)	MANGA- NESE, DIS- SOLVED (UG/L AS MN) (01056)	STRON- TIUM, DIS- SOLVED (UG/L AS SR) (01080)	2,6-DI- ETHYL ANILINE WAT FLT 0.7 µ GF, REC (UG/L) (82660)	ACETO- CHLOR, WATER FLTRD REC (UG/L) (49260)	ALA- CHLOR, WATER, DISS, REC (UG/L) (46342)	ALPHA BHC DIS- SOLVED (UG/L) (34253)	ATRA- ZINE, WATER, DISS, REC (UG/L) (39632)
OCT 27...	97	91	--	--	20	10	72.1	--	--	--	--	--
NOV 23...	80	78	--	--	20	8	68.8	--	--	--	--	--
DEC 21...	93	87	--	--	20	12	61.2	--	--	--	--	--
FEB 02...	78	81	--	--	E10	9	56.9	--	--	--	--	--
29...	101	97	--	--	E10	19	62.5	--	--	--	--	--
MAR 28...	80	75	--	--	20	15	50.1	--	--	--	--	--
APR 11...	--	--	--	--	--	--	--	<.003	E.004	.008	<.002	.060
11...	--	--	--	--	--	--	--	<.003	E.003	.008	<.002	.062
25...	86	79	--	--	10	12	56.0	<.003	<.002	.006	<.002	.167
MAY 09...	--	--	--	--	--	--	--	<.003	.017	<.002	<.002	.065
23...	99	84	--	--	20	17	58.9	<.003	.071	.005	<.002	.899
JUN 13...	--	--	--	--	--	--	--	<.003	.083	.007	<.002	3.33
26...	--	--	18.5	4.5	--	--	--	--	--	--	--	--
29...	124	89	--	--	20	13	71.4	<.003	.032	.006	<.002	1.02
29...	118	90	--	--	10	13	71.4	--	--	--	--	--
JUL 11...	--	--	--	--	--	--	--	<.003	<.002	<.002	<.002	.789
25...	96	82	--	--	20	8	69.4	<.003	<.002	<.002	<.002	.434
AUG 08...	--	--	--	--	--	--	--	<.003	<.002	<.002	<.002	.291
22...	90	79	--	--	30	13	68.6	<.003	<.002	<.002	<.002	.167
SEP 12...	--	--	--	--	--	--	--	<.003	<.002	<.002	<.002	.103
26...	102	97	--	--	20	12	75.7	<.003	<.002	<.002	<.002	.101

EAST MAHANTANGO CREEK BASIN

01555400 EAST MAHANTANGO CREEK AT KLINGERSTOWN, PA--Continued

WATER-QUALITY DATA, WATER YEAR OCTOBER 1999 TO SEPTEMBER 2000

DATE	BEN- FLUR- ALIN WAT FLD 0.7 µ GF, REC (µG/L) (82673)	BUTYL- ATE, WATER, DISS, REC (µG/L) (04028)	CAR- BARYL WATER FLTRD 0.7 µ GF, REC (µG/L) (82680)	CARBO- FURAN WATER FLTRD 0.7 µ GF, REC (µG/L) (82674)	CHLOR- PYRIFOS DIS- SOLVED (µG/L) (38933)	CYANA- ZINE, WATER, DISS, REC (µG/L) (04041)	DCPA WATER FLTRD 0.7 µ GF, REC (µG/L) (82682)	DEETHYL ATRA- ZINE, WATER, DISS, REC (µG/L) (04040)	DIAZ- INON D10 SRG WAT FLT 0.7 µ GF, REC PERCENT (91063)	DI- AZINON, DIS- SOLVED (µG/L) (39572)	DI- ELDRIN DIS- SOLVED (µG/L) (39381)
	OCT										
27...	--	--	--	--	--	--	--	--	--	--	--
NOV											
23...	--	--	--	--	--	--	--	--	--	--	--
DEC											
21...	--	--	--	--	--	--	--	--	--	--	--
FEB											
02...	--	--	--	--	--	--	--	--	--	--	--
29...	--	--	--	--	--	--	--	--	--	--	--
MAR											
28...	--	--	--	--	--	--	--	--	--	--	--
APR											
11...	<.002	<.002	<.003	E.014	E.003	<.004	<.002	E.12	113	<.002	<.001
11...	<.002	<.002	<.003	E.013	E.003	<.004	<.002	E.12	116	<.002	<.001
25...	<.002	<.002	<.003	<.003	<.004	<.004	<.002	E.096	98	<.002	<.001
MAY											
09...	<.002	<.002	<.003	<.003	E.002	<.004	<.002	E.073	95	<.002	<.001
23...	<.002	<.002	E.005	<.003	.005	<.004	<.002	E.14	108	<.002	<.001
JUN											
13...	<.002	<.002	E.023	E.011	.010	<.010	<.002	E.39	95	<.004	<.001
26...	--	--	--	--	--	--	--	--	--	--	--
29...	<.002	<.002	E.004	E.016	.007	.005	<.002	E.21	94	E.003	<.001
29...	--	--	--	--	--	--	--	--	--	--	--
JUL											
11...	<.002	<.002	<.003	<.003	<.004	<.004	<.002	E.21	101	<.002	<.001
25...	<.002	<.002	E.032	E.009	.004	<.004	<.002	E.16	101	<.002	<.001
AUG											
08...	<.002	<.002	E.017	E.006	<.004	<.004	<.002	E.16	115	<.002	<.001
22...	<.002	<.002	<.003	<.003	<.004	<.004	<.002	E.11	107	<.002	<.001
SEP											
12...	<.002	<.002	<.003	<.003	E.002	<.004	<.002	E.088	111	<.002	<.001
26...	<.002	<.002	<.003	<.003	<.004	<.004	<.002	E.14	111	<.002	<.001
DATE	DISUL- FOTON WATER FLTRD 0.7 µ GF, REC (µG/L) (82677)	EPTC WATER FLTRD 0.7 µ GF, REC (µG/L) (82668)	ETHAL- FLUR- ALIN WAT FLT 0.7 µ GF, REC (µG/L) (82663)	ETHO- PROP WATER FLTRD 0.7 µ GF, REC (µG/L) (82672)	FONOFOS WATER DISS REC (µG/L) (04095)	HCH ALPHA D6 SRG WAT FLT 0.7 µ GF, REC PERCENT (91065)	LINDANE SOLVED (µG/L) (39341)	LIN- URON WATER FLTRD 0.7 µ GF, REC (µG/L) (82666)	MALA- THION, DIS- SOLVED (µG/L) (39532)	METHYL AZIN- PHOS WAT FLT 0.7 µ GF, REC (µG/L) (82686)	METHYL PARA- THION WAT FLT 0.7 µ GF, REC (µG/L) (82667)
OCT											
27...	--	--	--	--	--	--	--	--	--	--	--
NOV											
23...	--	--	--	--	--	--	--	--	--	--	--
DEC											
21...	--	--	--	--	--	--	--	--	--	--	--
FEB											
02...	--	--	--	--	--	--	--	--	--	--	--
29...	--	--	--	--	--	--	--	--	--	--	--
MAR											
28...	--	--	--	--	--	--	--	--	--	--	--
APR											
11...	<.017	<.002	<.004	<.003	<.003	103	<.004	<.002	<.005	<.001	<.006
11...	<.017	<.002	<.004	<.003	<.003	100	<.004	<.002	<.005	<.001	<.006
25...	<.017	<.002	<.004	<.003	<.003	82	<.004	<.002	<.005	<.001	<.006
MAY											
09...	<.017	<.002	<.004	<.003	<.003	89	<.004	<.002	<.005	<.001	<.006
23...	<.017	<.002	<.004	<.003	<.003	101	<.004	E.027	<.005	<.001	<.006
JUN											
13...	<.017	<.002	<.004	.014	<.003	83	<.004	.029	<.005	<.010	<.006
26...	--	--	--	--	--	--	--	--	--	--	--
29...	<.017	.006	<.004	<.003	<.003	88	E.002	<.008	<.005	E.003	.007
29...	--	--	--	--	--	--	--	--	--	--	--
JUL											
11...	<.017	<.002	<.004	<.003	<.003	92	<.004	<.002	<.005	<.001	<.006
25...	<.017	<.002	<.004	<.003	<.003	102	<.004	<.002	<.005	<.001	<.006
AUG											
08...	<.017	<.002	<.004	<.003	<.003	93	<.004	<.002	<.005	<.001	<.006
22...	<.017	<.002	<.004	<.003	<.003	90	<.004	<.002	<.005	<.001	<.006
SEP											
12...	<.017	<.002	<.004	<.003	<.003	107	<.004	<.002	<.005	<.001	<.006
26...	<.017	<.002	<.004	<.003	<.003	110	<.004	<.002	<.005	<.001	<.006

EAST MAHANTANGO CREEK BASIN

01555400 EAST MAHANTANGO CREEK AT KLINGERSTOWN, PA--Continued

WATER-QUALITY DATA, WATER YEAR OCTOBER 1999 TO SEPTEMBER 2000

DATE	METO- LACHLOR WATER DISSOLV (µG/L) (39415)	METRI- BUZIN WATER DISSOLV (µG/L) (82630)	MOL- INATE WATER FLTRD 0.7 µ GF, REC (µG/L) (82671)	NAPROP- AMIDE WATER FLTRD 0.7 µ GF, REC (µG/L) (82684)	P, P' DDE DISSOLV (µG/L) (34653)	PARA- THION, DIS- SOLVED (µG/L) (39542)	PEB- ULATE WATER FILTRD 0.7 µ GF, REC (µG/L) (82669)	PENDI- METH- ALIN WAT FLT 0.7 µ GF, REC (µG/L) (82683)	PER- METHRIN CIS WAT FLT 0.7 µ GF, REC (µG/L) (82687)	PHORATE WATER FLTRD 0.7 µ GF, REC (µG/L) (82664)	PRO- METON, WATER, DISS, REC (µG/L) (04037)
OCT											
27...	--	--	--	--	--	--	--	--	--	--	--
NOV											
23...	--	--	--	--	--	--	--	--	--	--	--
DEC											
21...	--	--	--	--	--	--	--	--	--	--	--
FEB											
02...	--	--	--	--	--	--	--	--	--	--	--
29...	--	--	--	--	--	--	--	--	--	--	--
MAR											
28...	--	--	--	--	--	--	--	--	--	--	--
APR											
11...	.082	<.004	<.004	E.003	E.002	<.004	<.004	<.004	<.005	<.002	E.003
11...	.083	<.004	<.004	E.003	E.002	<.004	<.004	<.004	<.005	<.002	E.003
25...	.167	<.004	<.004	<.003	<.006	<.004	<.004	<.004	<.005	<.002	<.018
MAY											
09...	.083	<.004	<.004	<.003	<.006	<.004	<.004	.015	<.005	<.002	E.004
23...	.490	.018	<.004	<.003	<.006	<.004	<.004	.030	<.005	<.002	<.018
JUN											
13...	1.38	.015	<.004	.007	<.006	<.004	<.004	.071	<.005	<.002	E.007
26...	--	--	--	--	--	--	--	--	--	--	--
29...	.323	.022	<.004	<.003	E.002	<.004	<.004	.025	<.005	<.002	E.004
29...	--	--	--	--	--	--	--	--	--	--	--
JUL											
11...	.326	<.004	<.004	<.003	<.006	<.004	<.004	<.004	<.005	<.002	<.018
25...	1.08	.006	<.004	<.003	<.006	<.004	<.004	<.004	<.005	<.002	E.002
AUG											
08...	.208	<.004	<.004	<.003	<.006	<.004	<.004	<.004	<.005	<.002	E.003
22...	.087	<.004	<.004	<.003	<.006	<.004	<.004	<.004	<.005	<.002	<.018
SEP											
12...	.089	<.004	<.004	<.003	<.006	<.004	<.004	<.004	<.005	<.002	<.018
26...	.100	<.004	<.004	<.003	<.006	<.004	<.004	<.004	<.005	<.002	<.018
DATE	PRON- AMIDE WATER FLTRD 0.7 µ GF, REC (µG/L) (82676)	PROPA- CHLOR, WATER, DISS, REC (µG/L) (04024)	PRO- PANIL WATER FLTRD 0.7 µ GF, REC (µG/L) (82679)	PRO- PARGITE WATER FLTRD 0.7 µ GF, REC (µG/L) (82685)	SI- MAZINE, WATER, DISS, REC (µG/L) (04035)	TEBU- THIURON WATER FLTRD 0.7 µ GF, REC (µG/L) (82670)	TER- BACIL WATER FLTRD 0.7 µ GF, REC (µG/L) (82665)	TER- BUFOS WATER FLTRD 0.7 µ GF, REC (µG/L) (82675)	THIO- BENCARB WATER FLTRD 0.7 µ GF, REC (µG/L) (82681)	TRIAL- LATE WATER FLTRD 0.7 µ GF, REC (µG/L) (82678)	TRI- FLUR- ALIN WAT FLT 0.7 µ GF, REC (µG/L) (82661)
OCT											
27...	--	--	--	--	--	--	--	--	--	--	--
NOV											
23...	--	--	--	--	--	--	--	--	--	--	--
DEC											
21...	--	--	--	--	--	--	--	--	--	--	--
FEB											
02...	--	--	--	--	--	--	--	--	--	--	--
29...	--	--	--	--	--	--	--	--	--	--	--
MAR											
28...	--	--	--	--	--	--	--	--	--	--	--
APR											
11...	<.003	<.007	<.004	<.013	.006	<.010	E.007	<.013	<.002	<.001	<.002
11...	<.003	<.007	<.004	<.013	.007	<.010	<.007	<.013	<.002	<.001	<.002
25...	<.003	<.007	<.004	<.013	.011	<.010	<.007	<.013	<.002	<.001	<.002
MAY											
09...	<.003	<.007	<.004	<.013	.009	<.010	<.007	<.013	<.002	<.001	<.002
23...	<.003	<.007	<.004	<.013	.024	<.010	<.007	<.013	<.002	<.001	<.002
JUN											
13...	<.003	<.007	<.004	<.013	.090	<.010	E.013	<.013	<.002	<.001	<.002
26...	--	--	--	--	--	--	--	--	--	--	--
29...	<.003	<.007	<.004	<.013	.025	<.010	E.006	<.013	<.002	<.001	<.002
29...	--	--	--	--	--	--	--	--	--	--	--
JUL											
11...	<.003	<.007	<.004	<.013	.968	<.010	<.007	<.013	<.002	<.001	<.002
25...	<.003	<.007	<.004	<.013	.022	<.010	<.007	<.013	<.002	<.001	<.002
AUG											
08...	<.003	<.007	<.004	<.013	.020	<.010	<.010	<.013	<.002	<.001	<.002
22...	<.003	<.007	<.004	<.013	.014	<.010	<.007	<.013	<.002	<.001	<.002
SEP											
12...	<.003	<.007	<.004	<.013	.012	<.010	<.007	<.013	<.002	<.001	<.002
26...	<.003	<.007	<.004	<.013	.017	<.010	<.007	<.013	<.002	<.001	<.002

EAST MAHANTANGO CREEK BASIN

01555400 EAST MAHANTANGO CREEK AT KLINGERSTOWN, PA--Continued

WATER-QUALITY DATA, WATER YEAR OCTOBER 1999 TO SEPTEMBER 2000

DATE	SEDI- MENT, SUS- PENDED (MG/L) (80154)	SEDI- MENT, DIS- CHARGE, SUS- PENDED (T/DAY) (80155)	SED. SUSP. SIEVE DIAM. % FINER THAN .062 MM (70331)	PROJECT NUMBER (00029)	PURPOSE SITE VISIT, (CODE) (50280)	QUALITY ASSUR- ANCE DATA INDICA- TOR CODE (99111)	REP- LICATE TYPE (CODE) (99105)	SAMPLE PURPOSE CODE (71999)	SAMPLER TYPE (CODE) (84164)	SAM- PLING METHOD, CODES (82398)	MEDIUM CODE
OCT 27...	6	.31	73	20703	1001	1	--	15.00	3045	10	9
NOV 23...	2	.07	67	20703	1001	1	--	15.00	3045	10	9
DEC 21...	4	.76	82	20703	1001	1	--	15.00	3045	10	9
FEB 02...	3	--	82	20703	1001	1	--	15.00	8010	70	9
29...	47	36	85	20703	1001	1	--	15.00	3045	30	9
MAR 28...	92	75	88	20703	1001	1	--	15.00	3045	30	9
APR 11...	--	--	--	20703	1001	100	20.00	15.00	3045	30	9
11...	--	--	--	20703	1098	--	20.00	15.00	3045	30	R
25...	5	1.2	67	20703	1001	10	--	15.00	3045	10	9
MAY 09...	--	--	--	20703	1001	1	--	15.00	3045	10	9
23...	17	2.3	87	20703	1001	1	--	15.00	3045	10	9
JUN 13...	--	--	--	20703	1001	1	--	15.00	3045	10	9
26...	--	--	--	20703	1099	--	--	15.00	--	--	D
29...	21	2.9	91	20703	1001	30	20.00	15.00	3045	10	9
29...	18	3.0	89	20703	1098	--	20.00	15.00	3045	10	R
JUL 11...	--	--	--	20703	1001	1	--	15.00	3045	10	9
25...	5	.12	87	20703	1001	10	--	15.00	3045	10	9
AUG 08...	--	--	--	20703	1001	1	--	15.00	3045	10	9
22...	7	.08	60	20703	1001	1	--	15.00	3045	10	9
SEP 12...	--	--	--	20703	1001	1	--	15.00	3045	10	9
26...	7	.36	95	20703	1001	1	--	15.00	8010	10	9

EAST MAHANTANGO CREEK BASIN

01555400 EAST MAHANTANGO CREEK AT KLINGERSTOWN, PA--Continued

REMARKS.--The following analyses are quality control samples processed during the 2000 water year and are defined in the explanation of records section entitled, "Water Quality-Control Data." Explanation of column headings and abbreviations--PEST: pesticide; NUT&ION: nutrient and major ion.

QUALITY-CONTROL DATA, WATER YEAR OCTOBER 1999 TO SEPTEMBER 2000

DATE	TIME	SAMPLE TYPE	AGENCY ANA-LYZING SAMPLE (CODE NUMBER) (00028)	AGENCY COL-LECTING SAMPLE (CODE NUMBER) (00027)	CALCIUM DIS-SOLVED (MG/L AS CA) (00915)	MAGNE-SIUM, DIS-SOLVED (MG/L AS MG) (00925)	POTAS-SIUM, DIS-SOLVED (MG/L AS K) (00935)	SODIUM, DIS-SOLVED (MG/L AS NA) (00930)	CHLO-RIDE, DIS-SOLVED (MG/L AS CL) (00940)	FLUO-RIDE, DIS-SOLVED (MG/L AS F) (00950)	SILICA, DIS-SOLVED (MG/L AS SIO2) (00955)	SULFATE DIS-SOLVED (MG/L AS SO4) (00945)	
APR 25...	0930	NUT&ION BLANK	80020	1028	<.02	<.01	<.2	<.1	<.3	<.1	<.1	<.3	
JUL 25...	0900	PEST BLANK	80020	1028	--	--	--	--	--	--	--	--	
DATE		NITRO-GEN, AM-MONIA + ORGANIC DIS. (MG/L AS N) (00623)	NITRO-GEN, AM-MONIA + ORGANIC TOTAL (MG/L AS N) (00625)	NITRO-GEN, AMMONIA DIS-SOLVED (MG/L AS N) (00608)	NITRO-GEN, NO2+NO3 DIS-SOLVED (MG/L AS N) (00631)	NITRO-GEN, NITRITE DIS-SOLVED (MG/L AS N) (00613)	PHOS-PHORUS DIS-SOLVED (MG/L AS P) (00666)	PHOS-PHORUS ORTHO, DIS-SOLVED (MG/L AS P) (00671)	PHOS-PHORUS TOTAL (MG/L AS P) (00665)	SOLIDS, RESIDUE AT 180 DEG. C DIS-SOLVED (MG/L) (70300)	IRON, DIS-SOLVED (MG/L AS FE) (01046)	MANGA-NESE, DIS-SOLVED (MG/L AS MN) (01056)	STRON-TIUM, DIS-SOLVED (MG/L AS SR) (01080)
APR 25...	<.10	E.10	<.020	<.050	<.010	<.006	<.010	<.008	<10	<10	<2	<1.0	
JUL 25...	--	--	--	--	--	--	--	--	--	--	--	--	--
DATE		2,6-DI-ETHYL ANILINE WAT FLT 0.7 µ GF, REC (µG/L) (82660)	ACETO-CHLOR, WATER, FLTRD REC (µG/L) (49260)	ALA-CHLOR, WATER, DISS, REC (µG/L) (46342)	ALPHA BHC DIS-SOLVED (µG/L) (34253)	ATRA-ZINE, WATER, DISS, REC (µG/L) (39632)	BEN-FLUR-ALIN WAT FLD 0.7 µ GF, REC (µG/L) (82673)	BUTYL-ATE, WATER, DISS, REC (µG/L) (04028)	CAR-BARYL WATER, FLTRD 0.7 µ GF, REC (µG/L) (82680)	CARBO-FURAN WATER, FLTRD 0.7 µ GF, REC (µG/L) (82674)	CHLOR-PYRIFOS DIS-SOLVED (µG/L) (38933)	CYANA-ZINE, WATER, DISS, REC (µG/L) (04041)	DCPA WATER, FLTRD 0.7 µ GF, REC (µG/L) (82682)
APR 25...	--	--	--	--	--	--	--	--	--	--	--	--	--
JUL 25...	<.003	<.002	<.002	<.002	<.001	<.002	<.002	<.003	<.003	<.004	<.004	<.004	<.002
DATE		DEETHYL ATRA-ZINE, WATER, DISS, REC (µG/L) (04040)	DIAZ-INON D10 SRG WAT FLT 0.7 µ GF, REC PERCENT (91063)	DI-AZINON, DIS-SOLVED (µG/L) (39572)	DI-ELDRIN DIS-SOLVED (µG/L) (39381)	DISUL-FOTON WATER, FLTRD 0.7 µ GF, REC (µG/L) (82677)	EPTC WATER, FLTRD 0.7 µ GF, REC (µG/L) (82668)	ETHAL-FLUR-ALIN WAT FLT 0.7 µ GF, REC (µG/L) (82663)	ETHO-PROP WATER, FLTRD 0.7 µ GF, REC (µG/L) (82672)	FONOFOS WATER, DISS, REC (µG/L) (04095)	HCH ALPHA D6 SRG WAT FLT 0.7 µ GF, REC PERCENT (91065)	LINDANE DIS-SOLVED (µG/L) (39341)	
APR 25...	--	--	--	--	--	--	--	--	--	--	--	--	
JUL 25...	<.002	99	<.002	<.001	<.017	<.002	<.004	<.003	<.003	99	<.004	<.004	

EAST MAHANTANGO CREEK BASIN

01555400 EAST MAHANTANGO CREEK AT KLINGERSTOWN, PA--Continued

QUALITY-CONTROL DATA, WATER YEAR OCTOBER 1999 TO SEPTEMBER 2000

DATE	LIN- URON WATER FLTRD 0.7 µ GF, REC (µG/L) (82666)	MALA- THION, DIS- SOLVED (µG/L) (39532)	METHYL AZIN- PHOS WAT FLT 0.7 µ GF, REC (µG/L) (82686)	METHYL PARA- THION WAT FLT 0.7 µ GF, REC (µG/L) (82667)	METO- LACHLOR WATER DISSOLV (µG/L) (39415)	METRI- BUZIN WATER DISSOLV (µG/L) (82630)	MOL- INATE WATER FLTRD 0.7 µ GF, REC (µG/L) (82671)	NAPROP- AMIDE WATER FLTRD 0.7 µ GF, REC (µG/L) (82684)	P, P' DDE DISSOLV (µG/L) (34653)	PARA- THION, DIS- SOLVED (µG/L) (39542)	PEB- ULATE WATER FLTRD 0.7 µ GF, REC (µG/L) (82669)
APR 25...	--	--	--	--	--	--	--	--	--	--	--
JUL 25...	<.002	<.005	<.001	<.006	<.002	<.004	<.004	<.003	<.006	<.004	<.004
DATE	PENDI- METH- ALIN WAT FLT 0.7 µ GF, REC (µG/L) (82683)	PER- METHRIN CIS WAT FLT 0.7 µ GF, REC (µG/L) (82687)	PHORATE WATER FLTRD 0.7 µ GF, REC (µG/L) (82664)	PRO- METON, WATER, DISS, REC (µG/L) (04037)	PRON- AMIDE WATER FLTRD 0.7 µ GF, REC (µG/L) (82676)	PROPA- CHLOR, WATER, DISS, REC (µG/L) (04024)	PRO- PANIL WATER FLTRD 0.7 µ GF, REC (µG/L) (82679)	PRO- PARGITE WATER FLTRD 0.7 µ GF, REC (µG/L) (82685)	SI- MAZINE, WATER, DISS, REC (µG/L) (04035)	TEBU- THIURON WATER FLTRD 0.7 µ GF, REC (µG/L) (82670)	TER- BACIL WATER FLTRD 0.7 µ GF, REC (µG/L) (82665)
APR 25...	--	--	--	--	--	--	--	--	--	--	--
JUL 25...	<.004	<.005	<.002	<.018	<.003	<.007	<.004	<.013	<.005	<.010	<.007
DATE	TER- BUFOS WATER FLTRD 0.7 µ GF, REC (µG/L) (82675)	THIO- BENCARB WATER FLTRD 0.7 µ GF, REC (µG/L) (82681)	TRIAL- LATE WATER FLTRD 0.7 µ GF, REC (µG/L) (82678)	TRI- FLUR- ALIN WAT FLT 0.7 µ GF, REC (µG/L) (82661)	BLANK, SOURCE OF SOLU- TION (CODE) (99101)	BLANK, TYPE OF SAMPLE (CODE) (99102)	BLANK, TYPE OF SOLU- TION (CODE) (99100)	PROJECT NUMBER (00029)	PURPOSE SITE VISIT, (CODE) (50280)	REF- ERENCE MA- TERIAL/ SPIKE SOURCE (CODE) (99104)	SAMPLE PURPOSE CODE (71999)
APR 25...	--	--	--	--	80.00	100.00	10.00	20703	1098	12	15.00
JUL 25...	<.013	<.002	<.001	<.002	10.00	100.00	40.00	20703	1098	39201	15.00

EAST MAHANTANGO CREEK BASIN

01555400 EAST MAHANTANGO CREEK AT KLINGERSTOWN, PA--Continued

REMARKS.--Concentrations of pesticides and herbicides in replicate and spiked replicate from East Mahantango Creek at Klingerstown, Pa., April 11, 2000 and calculated recoveries, in percent; "<" = less than, less-than values were set equal to zero for calculations; E = estimated value.

QUALITY-CONTROL DATA, WATER YEAR OCTOBER 1999 TO SEPTEMBER 2000

Parameter code	Constituent	Concentration, in micrograms per liter				
		Laboratory results			Recovery in percent [(B-A)/C] x 100	
		Replicate 1 (not spiked) (04/11/00 @ 0921) A	Replicate 2 (spiked) (04/11/00 @ 0922) B	^a Calculated concentration in replicate 2 C		
49260	Acetochlor	E0.003	0.150	.112	131	
46342	Alachlor	0.008	0.160	.112	136	
34253	Alpha BHC	<0.002	0.117	.112	104	
39632	Atrazine	0.062	0.197	.112	121	
82673	Benfluralin	<0.002	0.138	.112	123	
04028	Butylate	<0.002	0.115	.112	103	
82680	Carbaryl	<0.003	E0.423	.112	378	
82674	Carbofuran	E0.012	E0.291	.112	249	
38933	Chlorpyrifos	E0.003	0.124	.112	108	
04041	Cyanazine	<0.004	0.146	.112	130	
82682	DCPA	<0.002	0.125	.112	112	
04040	Desethyl Atrazine	E0.121	E0.218	.112	87	
39572	Diazinon	<0.002	0.132	.112	118	
39381	Dieldrin	<0.001	0.123	.112	110	
82660	2,6-Diethyl Aniline	<0.003	0.108	.112	96	
82677	Disulfoton	<0.017	0.102	.112	91	
82668	EPTC	<0.002	0.111	.112	99	
82663	Ethalfuralin	<0.004	0.143	.112	128	
82672	Ethoprop	<0.003	E0.150	.112	134	
04095	Fonofos	<0.003	0.118	.112	105	
39341	Lindane	<0.004	0.122	.112	109	
82666	Linuron	<0.002	0.097	.112	87	
39532	Malathion	<0.005	0.171	.112	153	
82686	Methyl Azinphos	<0.001	E0.213	.112	190	
82667	Methyl Parathion	<0.006	0.171	.112	153	
39415	Metolachlor	0.083	0.228	.112	129	
82630	Metribuzin	<0.004	0.135	.112	121	
82671	Molinate	<0.004	0.118	.112	105	
82684	Napropamide	E0.003	0.160	.112	140	
34653	P, P' DDE	E0.002	0.080	.112	70	
39542	Parathion	<0.004	0.163	.112	146	
82669	Pebulate	<0.004	0.118	.112	105	
82683	Pendimethalin	<0.004	0.153	.112	137	
82687	Permethrin	<0.005	0.081	.112	72	
82664	Phorate	<0.002	0.108	.112	96	
04037	Prometon	E0.003	0.134	.112	117	
82676	Pronamide	<0.003	0.131	.112	117	
04024	Propachlor	<0.007	0.150	.112	134	
82679	Propanil	<0.004	0.136	.112	121	
82685	Propargite	<0.013	0.185	.112	165	
04035	Simazine	0.007	0.127	.112	107	
82670	Tebuthiuron	<0.010	0.149	.112	133	
82665	Terbacil	<0.007	E0.164	.112	146	
82675	Terbufos	<0.013	0.070	.112	62	
82681	Thiobencarb	<0.002	0.127	.112	113	
82678	Triallate	<0.001	0.130	.112	116	
82661	Trifluralin	<0.002	0.141	.112	126	
					Mean recovery	126
					Standard deviation	49
					Median recovery	118

^a Calculated concentration of spike in sample equals the concentration of the spike solution, in micrograms per milliliter x amount of spike added, in milliliters, divided by the spiked sample volume, in liters

EAST MAHANTANGO CREEK BASIN

01555400 EAST MAHANTANGO CREEK AT KLINGERSTOWN, PA--Continued

WATER TEMPERATURE, DEGREES CELSIUS, OCTOBER 1999 TO SEPTEMBER 2000

DAY	MAX	MIN	MEAN	MAX	MIN	MEAN	MAX	MIN	MEAN	MAX	MIN	MEAN
	OCTOBER			NOVEMBER			DECEMBER			JANUARY		
1	15.0	12.5	14.0	12.5	10.5	11.5	3.5	1.0	2.0	1.5	.0	1.0
2	15.0	13.0	14.0	14.0	12.0	13.0	2.5	.5	1.0	5.0	1.0	3.0
3	15.0	14.0	14.5	13.5	8.0	10.5	4.0	1.5	2.5	7.5	5.0	6.5
4	14.5	13.5	14.0	8.0	6.0	7.0	6.5	4.0	5.0	9.5	7.5	8.5
5	13.5	11.5	12.5	8.0	5.0	6.5	8.5	6.5	7.0	7.5	2.5	5.0
6	12.0	9.5	11.0	10.5	8.0	8.5	9.5	8.0	9.0	2.5	1.0	1.5
7	12.0	9.5	10.5	10.0	7.5	8.5	9.5	7.0	8.0	3.0	1.5	2.0
8	11.5	8.5	10.0	8.0	5.5	6.5	7.0	3.5	5.0	1.5	.5	1.0
9	14.0	11.5	12.5	9.0	5.5	6.5	4.0	2.5	3.5	3.5	1.0	2.0
10	15.0	14.0	14.5	10.5	8.5	9.0	4.5	3.0	3.5	4.5	3.5	4.0
11	15.5	14.0	15.0	11.0	9.0	10.5	4.5	3.0	4.0	5.0	4.0	4.5
12	14.0	11.5	12.5	9.0	6.5	7.0	3.5	2.0	2.5	4.0	3.5	4.0
13	14.0	12.0	13.0	9.0	7.0	8.0	3.5	1.5	2.0	4.0	1.5	3.5
14	14.0	11.0	12.5	9.0	6.5	8.0	5.0	3.5	4.0	1.5	.0	.0
15	11.0	9.0	10.0	8.5	6.5	7.5	8.0	5.0	6.5	.0	.0	.0
16	12.0	9.5	11.0	6.5	4.0	5.0	8.0	6.5	7.5	.5	.0	.0
17	13.0	11.0	12.0	4.0	2.0	3.0	6.5	4.5	5.5	.0	.0	.0
18	12.5	11.0	12.0	3.5	1.0	2.5	5.5	5.0	5.5	.0	.0	.0
19	11.0	9.0	10.0	5.0	2.5	3.5	5.5	4.0	5.0	.0	.0	.0
20	11.0	10.0	10.5	7.0	5.0	5.5	5.5	4.5	5.0	.0	.0	.0
21	10.5	9.0	9.5	9.0	7.0	7.5	5.5	4.5	5.0	.0	.0	.0
22	10.0	8.0	9.0	10.5	8.0	9.0	4.5	3.0	4.0	.0	.0	.0
23	10.0	9.0	9.5	12.0	10.5	11.0	3.0	1.0	2.0	.0	.0	.0
24	9.5	8.5	9.0	13.5	12.0	12.5	2.0	.0	.5	.0	.0	.0
25	10.0	8.0	9.0	13.5	11.0	12.0	.5	.0	.0	.0	.0	.0
26	9.5	7.5	8.5	12.0	10.0	10.5	.0	.0	.0	.0	.0	.0
27	9.5	7.5	8.5	12.0	10.5	11.0	.0	.0	.0	.0	.0	.0
28	8.5	6.0	7.5	10.5	8.0	9.0	.0	.0	.0	.0	.0	.0
29	9.0	6.0	8.0	8.0	5.0	6.0	.5	.0	.0	.0	.0	.0
30	10.5	7.5	9.0	5.5	3.5	4.0	.5	.0	.0	.0	.0	.0
31	12.0	9.0	10.5	---	---	---	2.0	.5	1.0	.0	.0	.0
MONTH	15.5	6.0	11.1	14.0	1.0	8.0	9.5	.0	3.4	9.5	.0	1.5
	FEBRUARY			MARCH			APRIL			MAY		
1	.0	.0	.0	7.0	5.0	6.0	11.0	7.0	9.5	15.5	10.5	13.0
2	.0	.0	.0	7.0	5.0	6.0	11.5	10.0	10.5	17.0	13.5	15.0
3	.0	.0	.0	6.0	4.0	5.0	14.5	11.0	13.0	18.0	11.5	14.5
4	.0	.0	.0	6.5	4.0	5.5	14.5	11.0	13.5	20.0	13.5	16.5
5	.0	.0	.0	8.0	5.0	6.5	11.0	7.5	8.5	21.5	16.5	19.0
6	.0	.0	.0	8.0	5.5	7.0	12.5	7.0	9.5	23.0	17.5	20.0
7	.0	.0	.0	9.0	5.0	7.0	11.0	9.5	10.5	24.0	18.5	21.0
8	.0	.0	.0	12.0	8.0	10.0	13.5	9.5	11.5	24.5	19.0	22.0
9	.0	.0	.0	12.5	9.5	11.0	10.5	6.5	8.5	25.0	20.0	22.5
10	.0	.0	.0	11.5	9.5	10.5	11.0	7.0	9.0	23.5	19.0	21.5
11	.0	.0	.0	9.5	7.0	8.0	9.5	7.5	8.5	19.5	15.0	17.5
12	.0	.0	.0	7.0	5.0	6.5	10.0	8.0	9.0	20.0	17.0	18.5
13	.0	.0	.0	7.5	4.0	5.5	10.5	6.5	8.5	20.0	17.5	19.0
14	.0	.0	.0	8.0	5.5	7.0	12.0	7.5	10.0	19.0	15.5	17.0
15	.0	.0	.0	9.5	6.0	8.0	13.0	10.0	11.5	16.5	13.5	15.5
16	4.5	.0	2.5	10.0	8.0	9.0	17.0	12.5	14.5	15.5	12.0	14.0
17	3.5	1.5	2.5	9.5	5.0	7.5	15.5	9.5	12.5	17.5	13.5	15.5
18	2.5	1.0	1.5	6.5	3.0	5.0	9.5	8.0	8.5	20.0	16.0	17.5
19	3.0	1.5	2.5	7.0	4.5	6.0	13.0	8.5	10.5	19.0	15.5	17.5
20	3.5	2.0	2.5	8.5	6.0	7.5	14.0	11.5	13.0	15.5	12.5	13.5
21	3.5	1.5	2.5	8.0	6.0	6.5	13.0	10.5	11.5	14.5	12.0	13.0
22	4.5	1.0	3.0	10.0	6.0	8.0	10.5	10.0	10.0	14.5	13.5	14.0
23	6.0	3.5	5.0	10.0	7.5	8.5	10.0	8.5	9.5	14.5	13.0	14.0
24	6.5	4.0	5.5	11.5	7.0	9.5	14.0	8.5	11.0	18.0	14.0	16.0
25	9.0	5.5	7.0	11.5	9.0	10.0	14.0	11.0	12.5	17.0	14.0	15.5
26	8.0	6.0	6.5	11.0	9.5	10.5	12.5	10.5	11.5	17.0	13.5	15.5
27	8.0	6.0	7.0	9.5	7.0	8.5	11.5	9.5	10.5	16.0	14.0	14.5
28	8.0	6.5	7.5	10.5	8.5	9.5	14.5	9.0	11.5	14.5	13.5	14.0
29	7.5	5.0	6.5	9.5	7.0	8.0	15.5	10.0	13.0	15.0	13.5	14.0
30	---	---	---	9.5	6.5	8.0	16.5	11.5	14.0	16.5	12.5	14.5
31	---	---	---	10.0	6.0	8.5	---	---	---	17.5	13.5	15.5
MONTH	9.0	.0	2.1	12.5	3.0	7.7	17.0	6.5	10.9	25.0	10.5	16.5

EAST MAHANTANGO CREEK BASIN

01555400 EAST MAHANTANGO CREEK AT KLINGERSTOWN, PA--Continued

CROSS-SECTION ANALYSES, WATER YEAR OCTOBER 1999 TO SEPTEMBER 2000

DATE	TIME	DIS- CHARGE, INST. CUBIC FEET PER SECOND (00061)	TEMPER- ATURE WATER (DEG C) (00010)	SAMPLE LOC- ATION, CROSS SECTION (FT FM R BK) (72103)	SAM- PLING DEPTH (FEET) (00003)
NOV 1999					
05...	1005	--	--	0	--
05...	1006	40	5.7	5	.5
05...	1007	40	5.6	10	.5
05...	1008	40	5.6	15	.5
05...	1009	40	5.5	20	.5
05...	1010	40	5.5	25	.5
05...	1011	40	5.5	30	.5
05...	1012	40	5.6	35	.5
05...	1013	40	5.6	40	.5
05...	1014	40	5.6	45	.5
05...	1015	40	5.7	50	.5
05...	1016	40	5.8	55	.5
05...	1017	--	--	58	--

CROSS-SECTION ANALYSES, WATER YEAR OCTOBER 2000 TO SEPTEMBER 2001

DATE	TIME	DIS- CHARGE, INST. CUBIC FEET PER SECOND (00061)	TEMPER- ATURE WATER (DEG C) (00010)	SAMPLE LOC- ATION, CROSS SECTION (FT FM R BK) (72103)	SAM- PLING DEPTH (FEET) (00003)
OCT 2000					
17...	0907	--	--	0	--
17...	0908	7.5	13.4	2	.5
17...	0909	7.5	13.4	6	.5
17...	0910	7.5	13.4	9	.5
17...	0911	7.5	13.4	12	.5
17...	0912	7.5	13.4	15	.5
17...	0913	7.5	13.4	18	.5
17...	0914	7.5	13.4	21	.5
17...	0915	7.5	13.4	24	.5
17...	0916	7.5	13.4	27	.5
17...	0917	7.5	13.3	31	.5
17...	0918	--	--	33	--