

**JUNIATA RIVER BASIN**

**01567000 JUNIATA RIVER AT NEWPORT, PA**

**LOCATION.**--Lat 40°28'42", long 77°07'46", Perry County, Hydrologic Unit 02050304, on right bank at downstream side of bridge on State Highway 34 at Newport, and 1,000 ft upstream from Little Buffalo Creek.

**DRAINAGE AREA.**--3,354 mi<sup>2</sup>.

**PERIOD OF RECORD.**--April 1899 to current year.

**REVISED RECORDS.**--WSP 756: Drainage area. WSP 781: 1902(M). WSP 1302: 1915-17. WSP 1502: 1899-1908, 1914, 1924, 1936. WSP 1722: 1916.

**GAGE.**--Water-stage recorder. Datum of gage is 363.93 ft above sea level. Prior to July 16, 1929, nonrecording gage at same site and datum.

**REMARKS.**--Records good except those for estimated daily discharges, which are poor. Flow regulated since October 1972 by Raystown Dam (station 01563100) about 75 mi upstream. Satellite and landline telemetry at station.

**EXTREMES OUTSIDE PERIOD OF RECORD.**--Flood of June 1, 1889, reached a stage of 35.9 ft, from floodmarks, discharge, about 209,000 ft<sup>3</sup>/s, from rating curve extended above 100,000 ft<sup>3</sup>/s.

DISCHARGE, CUBIC FEET PER SECOND, WATER YEAR OCTOBER 1999 TO SEPTEMBER 2000  
DAILY MEAN VALUES

DAY	OCT	NOV	DEC	JAN	FEB	MAR	APR	MAY	JUN	JUL	AUG	SEP
1	6040	923	3800	2490	e1200	11200	4090	5280	5490	2000	1990	893
2	4450	933	3340	2370	e1100	9950	3760	4780	4710	1850	2170	1010
3	3150	1750	3090	2270	e1000	8930	3500	4130	4300	1640	1760	920
4	2380	1880	2800	2270	e1000	7060	5130	3850	3580	1590	2260	861
5	2120	2510	2690	2430	e960	6090	7400	3580	2970	1530	2170	818
6	1950	1690	2610	2320	e940	5610	7100	3370	3610	1490	2360	781
7	1780	1420	2560	2220	e920	5220	6010	3170	4840	1440	2270	724
8	1620	1290	2450	2010	e900	4870	5520	2960	5270	1270	2830	707
9	1470	1190	2290	1950	e900	4370	6450	2770	4860	1210	3310	666
10	1840	1170	2300	2060	e900	3920	6650	2460	3710	1210	2470	656
11	2630	1090	2310	2700	e880	3740	5870	2450	3150	1160	1880	652
12	2670	1100	2250	2770	e1100	5020	5540	2300	2740	1170	1590	731
13	2470	1030	2290	2780	e2000	7050	5210	2280	2380	1160	1490	1050
14	2240	1060	2760	2380	e3500	6600	4680	2460	2590	1250	1370	1150
15	1960	984	6420	e2200	e8500	5860	4330	2410	2890	1860	1190	1060
16	1910	925	8860	e1900	8970	5440	4230	2320	3500	2040	1050	1000
17	1810	1070	6220	e2100	6400	5560	4330	2070	4960	1790	1020	939
18	1580	1190	4970	e1700	5340	5930	5740	1930	4740	2030	941	894
19	1420	1170	4260	e2000	4740	5690	9900	1760	4630	1730	945	799
20	1430	1200	3900	e1800	4480	5100	10200	2350	3640	1540	906	884
21	1360	1190	4270	e1700	4750	5250	9080	3570	2920	1460	826	831
22	1320	1180	4230	e1600	5250	10200	13000	3850	4340	1300	796	773
23	1270	1190	3960	e1500	5710	14100	22200	4470	4260	1100	773	730
24	1210	1210	3580	e1600	6590	11400	22900	6870	3620	987	974	724
25	1150	1230	3230	e1500	7470	10400	18200	13300	2850	946	926	751
26	1110	1970	3210	e1400	8370	9430	14100	9950	2670	931	885	851
27	1050	5010	3100	e1400	8820	8600	10500	6650	2490	933	888	941
28	1020	10100	3070	e1300	11400	8010	8120	5130	2280	868	965	1110
29	978	6130	2910	e1300	13500	6750	6880	4820	2250	973	989	1100
30	973	4610	2770	e1200	---	5310	5830	7350	2240	2210	904	966
31	899	---	2530	e1200	---	4800	---	7310	---	2340	882	---
TOTAL	59260	59395	109030	60420	127590	217460	246450	131950	108480	45008	45780	25972
MEAN	1912	1980	3517	1949	4400	7015	8215	4256	3616	1452	1477	866
MAX	6040	10100	8860	2780	13500	14100	22900	13300	5490	2340	3310	1150
MIN	899	923	2250	1200	880	3740	3500	1760	2240	868	773	652

e Estimated.

JUNIATA RIVER BASIN

01567000 JUNIATA RIVER AT NEWPORT, PA--Continued

STATISTICS OF MONTHLY MEAN DATA FOR WATER YEARS 1973 - 2000, BY WATER YEAR (WY) (SINCE REGULATION)

	OCT	NOV	DEC	JAN	FEB	MAR	APR	MAY	JUN	JUL	AUG	SEP
MEAN	2693	3697	5131	4911	6407	8822	8359	5541	3383	2223	1509	1895
MAX (WY)	11610	10850	13770	15810	15070	23500	25780	13940	8510	12080	3637	13220
MIN (WY)	1977	1998	1973	1996	1984	1994	1993	1978	1982	1989	1979	1996
MIN (WY)	730	871	1045	495	1779	2576	2898	2363	1084	864	774	586
(WY)	1992	1979	1999	1981	1980	1990	1995	1977	1991	1988	1995	1986

SUMMARY STATISTICS	FOR 1999 CALENDAR YEAR	FOR 2000 WATER YEAR	WATER YEARS 1973 - 2000
ANNUAL TOTAL	1129566	1236795	
ANNUAL MEAN	3095	3379	4536
HIGHEST ANNUAL MEAN			7166
LOWEST ANNUAL MEAN			2271
HIGHEST DAILY MEAN	24100	Apr 11	22900
LOWEST DAILY MEAN	537	Aug 11	652
ANNUAL SEVEN-DAY MINIMUM	616	Aug 7	702
INSTANTANEOUS PEAK FLOW			25400
INSTANTANEOUS PEAK STAGE			11.38
10 PERCENT EXCEEDS	6470		7050
50 PERCENT EXCEEDS	1880		2300
90 PERCENT EXCEEDS	837		924

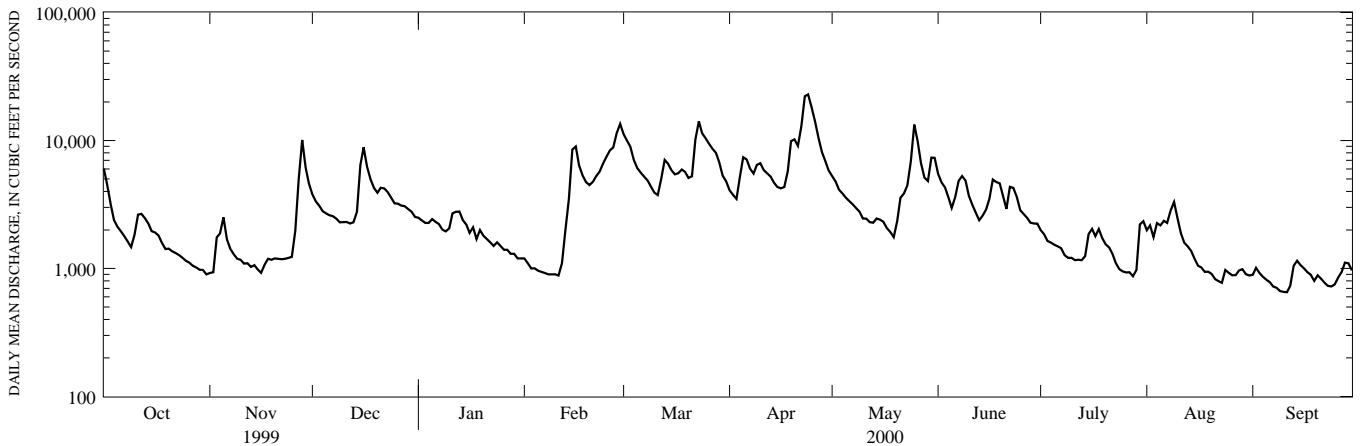
STATISTICS OF MONTHLY MEAN DATA FOR WATER YEARS 1899 - 1972, BY WATER YEAR (WY) (PRIOR TO REGULATION)

	OCT	NOV	DEC	JAN	FEB	MAR	APR	MAY	JUN	JUL	AUG	SEP
MEAN	1820	2658	3649	4621	5570	9856	8097	5797	3612	2072	1563	1419
MAX (WY)	8108	10880	11310	13300	16160	33600	17160	14870	25050	7865	4605	6890
MIN (WY)	1928	1951	1902	1937	1915	1936	1940	1908	1972	1972	1905	1911
MIN (WY)	351	418	471	841	943	2340	2026	1319	890	455	327	370
(WY)	1964	1931	1931	1931	1934	1931	1915	1941	1965	1966	1966	1964

SUMMARY STATISTICS WATER YEARS 1899 - 1972

ANNUAL MEAN	4228
HIGHEST ANNUAL MEAN	7403
LOWEST ANNUAL MEAN	2166
HIGHEST DAILY MEAN	172000
LOWEST DAILY MEAN	207
ANNUAL SEVEN-DAY MINIMUM	269
INSTANTANEOUS PEAK FLOW	a190000
INSTANTANEOUS PEAK STAGE	b34.24
INSTANTANEOUS LOW FLOW	195
ANNUAL RUNOFF (CFSM)	1.26
ANNUAL RUNOFF (INCHES)	17.13
10 PERCENT EXCEEDS	9360
50 PERCENT EXCEEDS	2300
90 PERCENT EXCEEDS	680

- a From rating curve extended above 100,000 ft<sup>3</sup>/s, on basis of slope-area measurement of peak flow.
- b From floodmark in gage.



1-YEAR HYDROGRAPH  
OCTOBER 1, 1999 TO SEPTEMBER 30, 2000