

PINE CREEK BASIN

03049800 LITTLE PINE CREEK NEAR ETNA, PA

LOCATION.--Lat 40°31'13", long 79°56'18", Allegheny County, Hydrologic Unit 05010009, on right bank at downstream side of highway bridge on Saxonburg Boulevard, 0.7 mi upstream from mouth, and 1.5 mi northeast of Etna.

DRAINAGE AREA.--5.78 mi<sup>2</sup>.

PERIOD OF RECORD.--October 1962 to current year.

GAGE.--Water-stage recorder and crest-stage gage. Datum of gage is 774.26 ft above sea level. Prior to Oct. 1, 1986 at datum 3.00 ft higher. Sept. 30, 1987 datum lowered 1.00 ft.

REMARKS.--Records fair except those for estimated daily discharges, which are poor. Several measurements of water temperature were made during the year.

PEAK DISCHARGES FOR CURRENT YEAR.--Peak discharges greater than a base discharge of 150 ft<sup>3</sup>/s and maximum (\*):

Date	Time	Discharge ft <sup>3</sup> /s	Gage Height (ft)	Date	Time	Discharge ft <sup>3</sup> /s	Gage Height (ft)
Dec. 14	1115	156	3.52	May 28	1400	161	3.62
Feb. 14	0245	*169	*3.65				

DISCHARGE, CUBIC FEET PER SECOND, WATER YEAR OCTOBER 1999 TO SEPTEMBER 2000  
DAILY MEAN VALUES

DAY	OCT	NOV	DEC	JAN	FEB	MAR	APR	MAY	JUN	JUL	AUG	SEP
1	.40	.64	.57	e1.3	e.90	6.5	3.8	4.1	4.2	.83	5.1	.45
2	.29	14	.54	1.6	e.92	6.1	3.7	5.9	5.1	.71	1.9	.49
3	.25	3.9	.53	2.5	e.98	5.1	8.2	3.7	3.8	2.1	1.3	.54
4	.99	1.1	.71	29	e.98	4.6	56	3.2	2.9	1.8	1.0	.53
5	.41	.66	.65	14	e1.0	4.2	32	2.8	5.2	1.1	.70	e.45
6	.35	.63	1.6	7.9	e1.0	3.6	19	2.5	5.4	.79	15	e.37
7	.31	.61	.84	5.7	e1.1	3.3	12	2.2	3.3	.66	21	.31
8	.30	.54	.68	4.3	e1.1	3.2	28	2.0	2.4	.59	4.5	.29
9	.33	.47	.60	4.1	e1.1	3.1	23	1.8	2.0	.55	2.7	.27
10	1.1	.48	1.6	4.1	e1.1	2.7	16	1.6	1.7	.73	1.8	2.0
11	.55	.47	1.1	3.2	e1.1	3.8	13	1.5	3.3	.71	1.2	1.4
12	.45	.43	.87	2.6	e5.0	4.7	10	1.4	5.1	.51	.98	1.6
13	2.0	.43	.96	2.5	15	3.2	7.9	1.3	5.0	.44	.84	1.6
14	1.5	.47	43	1.8	78	3.0	6.9	1.1	3.1	2.2	.73	.83
15	.58	.54	17	1.9	25	2.9	6.1	.95	3.3	2.8	.65	3.7
16	.42	.53	9.1	1.9	14	7.0	5.5	.88	2.6	1.3	.69	1.7
17	.42	.53	5.5	1.7	9.1	15	26	.86	7.6	1.0	.63	1.1
18	.49	.50	3.9	2.8	16	9.1	13	.79	5.1	.80	1.1	.93
19	.45	.47	3.0	1.9	30	7.8	10	4.9	3.8	.76	.74	1.0
20	.58	.62	4.1	1.6	15	7.6	8.8	1.3	2.7	.77	.55	.80
21	.55	.51	3.4	1.6	11	30	13	1.1	2.9	.71	.51	2.1
22	.59	.42	2.7	1.5	11	22	13	.94	2.4	.70	.46	.96
23	.75	.35	2.2	1.5	11	15	11	6.2	1.6	.57	2.1	2.6
24	.98	.29	1.9	1.4	9.5	11	9.0	9.4	1.4	.50	3.6	9.8
25	.72	.63	1.8	e1.3	8.0	9.3	7.7	3.0	1.5	.42	1.1	2.8
26	.68	25	e1.5	e1.2	6.5	7.8	6.3	2.0	1.5	.33	.75	9.2
27	.67	3.9	e1.5	e1.2	7.1	7.6	5.4	2.8	1.3	.28	.80	3.5
28	.66	1.3	e1.4	e1.0	6.9	6.8	4.8	49	1.1	3.6	.72	2.2
29	.67	.87	e1.4	e1.0	5.3	5.8	4.3	28	1.5	1.3	.57	1.7
30	.63	.74	e1.3	e.96	---	4.8	3.8	9.7	1.4	2.3	.49	1.4
31	.63	---	e1.3	e.90	---	4.2	---	5.8	---	9.2	.48	---
TOTAL	19.70	62.03	117.25	109.96	294.68	230.8	387.2	162.72	94.2	41.06	74.69	56.62
MEAN	.64	2.07	3.78	3.55	10.2	7.45	12.9	5.25	3.14	1.32	2.41	1.89
MAX	2.0	25	43	29	78	30	56	49	7.6	9.2	21	9.8
MIN	.25	.29	.53	.90	.90	2.7	3.7	.79	1.1	.28	.46	.27
CFSM	.11	.36	.65	.61	1.76	1.29	2.23	.91	.54	.23	.42	.33
IN.	.13	.40	.75	.71	1.90	1.49	2.49	1.05	.61	.26	.48	.36

STATISTICS OF MONTHLY MEAN DATA FOR WATER YEARS 1963 - 2000, BY WATER YEAR (WY)

MEAN	1.92	4.91	7.76	7.51	9.66	13.2	10.6	8.26	4.17	3.23	1.62	1.55
MAX	8.55	25.4	26.4	22.4	21.0	32.4	23.8	26.1	17.8	26.4	6.92	10.4
(WY)	1980	1986	1987	1965	1966	1994	1987	1968	1972	1990	1980	1990
MIN	.010	.51	.69	.82	2.17	1.30	2.33	1.74	.42	.016	.10	.040
(WY)	1964	1964	1964	1977	1980	1969	1971	1965	1965	1965	1965	1963

e Estimated.

PINE CREEK BASIN

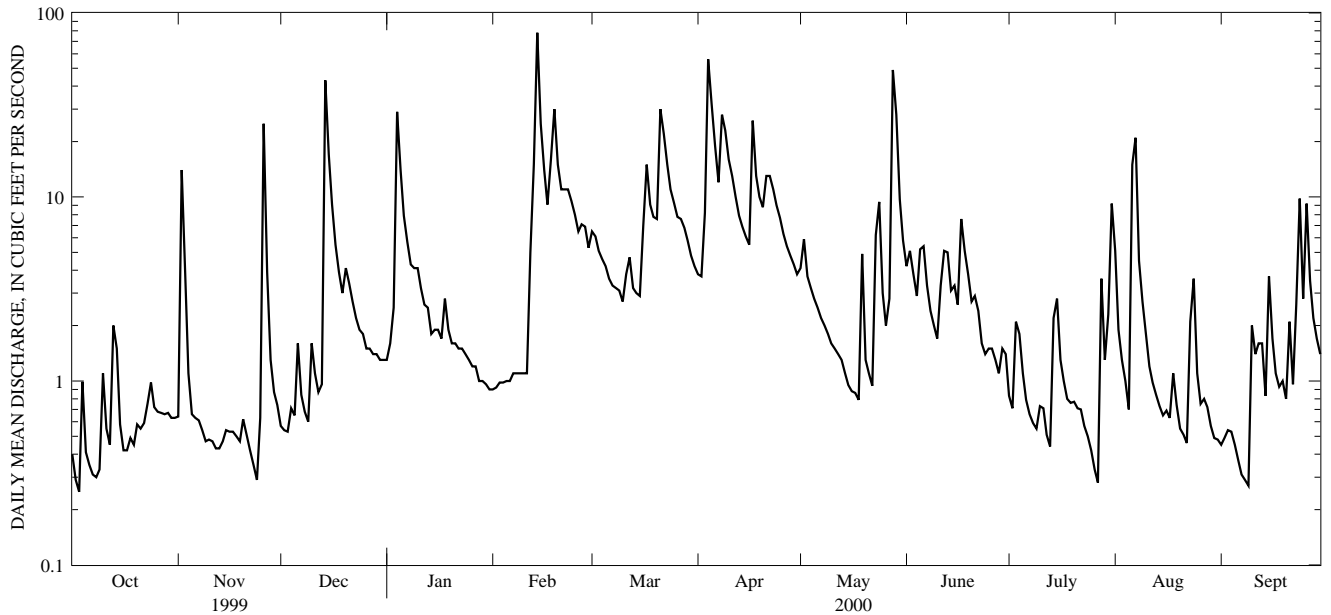
03049800 LITTLE PINE CREEK NEAR ETNA, PA--Continued

SUMMARY STATISTICS	FOR 1999 CALENDAR YEAR		FOR 2000 WATER YEAR		WATER YEARS 1963 - 2000	
ANNUAL TOTAL	1591.20		1650.91			
ANNUAL MEAN	4.36		4.51		6.18	
HIGHEST ANNUAL MEAN					10.8	1987
LOWEST ANNUAL MEAN					2.68	1969
HIGHEST DAILY MEAN	59	Apr 9	78	Feb 14	525	May 30 1986
LOWEST DAILY MEAN	.08	Jul 27	.25	Oct 3	.00	Jul 13 1963
ANNUAL SEVEN-DAY MINIMUM	.14	Jul 21	a.39	Sep 3	.00	Aug 26 1963
INSTANTANEOUS PEAK FLOW			169	Feb 14	b7190	May 30 1986
INSTANTANEOUS PEAK STAGE			3.65	Feb 14	c10.28	May 30 1986
INSTANTANEOUS LOW FLOW			.22	Oct 3,4	.00	Aug 30 1991
ANNUAL RUNOFF (CFSM)	.75		.78		1.07	
ANNUAL RUNOFF (INCHES)	10.24		10.63		14.53	
10 PERCENT EXCEEDS	12		11		15	
50 PERCENT EXCEEDS	1.1		1.6		2.7	
90 PERCENT EXCEEDS	.28		.49		.30	

a Computed using estimated daily discharges.

b From rating curve extended above 2,000 ft<sup>3</sup>/s on basis of slope-area measurement of peak flow at site 0.6 mi downstream.

c 10.41 ft, from outside floodmark, datum then in use.



1-YEAR HYDROGRAPH  
OCTOBER 1, 1999 TO SEPTEMBER 30, 2000