

YOUGHIOGHENY RIVER BASIN

03082500 YOUGHIOGHENY RIVER AT CONNELLSVILLE, PA

LOCATION.--Lat 40°01'03", long 79°35'38", Fayette County, Hydrologic Unit 05020006, on left bank at downstream side of Crawford Avenue bridge at Conneltsville, 1.2 mi upstream from Mounts Creek, at mile 44.0.

DRAINAGE AREA.--1,326 mi².

PERIOD OF RECORD.--July 1908 to current year. Monthly discharge only for some periods, published in WSP 1305.

REVISED RECORDS.--WSP 743: Drainage area. WSP 1305: 1912 (M), 1914 (M), 1916-17 (M), 1918, 1922-25. WSP 1435: 1919-20. WSP 1725: 1916, 1932 (monthly, yearly summaries).

GAGE.--Water-stage recorder. Datum of gage is 860.13 ft above sea level. Prior to Aug. 15, 1928, nonrecording gage, and Aug. 15, 1928 to July 7, 1958, water-stage recorder at same site and datum. July 8, 1958 to Sept. 8, 1959, nonrecording gage at site 0.4 mi downstream at different datum.

REMARKS.--Records good except those for estimated daily discharges, which are poor. Flow regulated since January 1925 by Deep Creek Reservoir (station 03076000), since December 1942 by Youghiohony River Lake (station 03077000) 29.4 mi upstream, and by several smaller reservoirs above station. Several measurements of water temperature were made during the year. U.S. Army Corps of Engineers satellite telemetry at station.

DAY	DISCHARGE, CUBIC FEET PER SECOND, WATER YEAR OCTOBER 1999 TO SEPTEMBER 2000											
	OCT	NOV	DEC	JAN	FEB	MAR	APR	MAY	JUN	JUL	AUG	SEP
1	724	538	1070	1130	e640	3600	1810	1850	3170	1180	2760	850
2	655	934	1100	1170	e620	3210	1680	2430	2690	1040	1570	952
3	580	2350	1230	1220	e640	2780	1860	2430	1860	1070	1580	1070
4	599	1260	1220	1350	e640	2310	4880	2030	1650	1530	2020	997
5	639	1010	1200	1520	e630	2110	6300	1720	1650	1410	1820	1080
6	627	937	1170	1440	e620	1930	5570	1580	5930	1220	11600	1710
7	584	851	1140	1330	e560	1770	4610	1450	10300	1100	18500	1640
8	545	787	1060	1280	e450	1630	4330	1350	8310	1070	6810	1390
9	532	790	1010	1280	e420	1390	4760	1270	6860	1010	4290	1320
10	901	755	1150	1320	e500	1370	4290	1200	5600	1090	3270	1340
11	1230	720	1690	1400	e1000	1400	3950	1130	2830	1760	2960	2050
12	978	692	1710	1400	e2700	2360	4560	1070	1920	1540	2600	2060
13	658	663	1550	1350	e2400	2460	4190	1040	1780	1220	2300	2080
14	757	642	3340	1350	9070	2060	3980	1090	1880	1100	2200	1950
15	740	620	5500	1180	8990	2060	2680	1010	1640	1650	2070	1880
16	678	476	3490	1260	5220	2000	2460	729	1600	1760	2070	1920
17	616	280	2510	1180	4800	2640	3970	671	1350	1310	1950	1580
18	643	538	1990	1010	5140	2380	6230	717	1220	1280	1420	1330
19	615	582	1680	1100	24700	2040	4900	1220	1490	1150	1450	1130
20	598	599	1460	1140	12200	1860	4260	3610	1290	1190	1390	1620
21	584	623	1330	957	8090	3470	4470	3190	1200	1240	1330	1560
22	566	619	1220	e840	6770	4910	6880	2350	1540	1160	1280	1540
23	564	613	1100	e860	6330	4500	7850	2120	1410	1080	1220	1500
24	576	609	e1110	e840	6340	3950	6230	2800	1150	1100	1110	1460
25	577	734	e1120	e820	6150	3300	5100	3140	1030	1090	1110	1330
26	588	3190	e1130	e790	4930	2820	4230	2690	1020	1070	1060	2630
27	635	4930	e1140	e700	4060	2420	3350	2350	1500	1030	1070	3040
28	619	2700	e1150	e640	4630	2240	2710	2800	3230	998	1210	2670
29	587	1700	1160	e630	4180	2340	2290	5540	1930	1100	1150	2220
30	558	1290	1150	e640	---	2300	2050	4010	1410	1340	930	964
31	536	---	1190	e640	---	2040	---	3420	---	2420	878	---
TOTAL	20289	33032	49070	33767	133420	77650	126430	64007	80440	39308	86978	48863
MEAN	654	1101	1583	1089	4601	2505	4214	2065	2681	1268	2806	1629
MAX	1230	4930	5500	1520	24700	4910	7850	5540	10300	2420	18500	3040
MIN	532	280	1010	630	420	1370	1680	671	1020	998	878	850
(†)	-354	+72	+140	-77	+1410	+524	+263	+76	-70	-292	-579	-925

† Change in contents, equivalent in cubic feet per second, in Deep Creek Reservoir and Youghiohony River Lake. Records of contents in Deep Creek Reservoir furnished by Reliant Energy. Records of contents in Youghiohony River Lake furnished by U.S. Army Corps of Engineers.
e Estimated.

YOUGHIOGHENY RIVER BASIN

03082500 YOUGHIOGHENY RIVER AT CONNELLSVILLE, PA--Continued

STATISTICS OF MONTHLY MEAN DATA FOR WATER YEARS 1925 - 2000, BY WATER YEAR (WY) (SINCE REGULATION)

	OCT	NOV	DEC	JAN	FEB	MAR	APR	MAY	JUN	JUL	AUG	SEP
MEAN	1425	1933	2968	3306	3846	4897	4162	3085	1879	1329	1276	1199
MAX (WY)	5938	7518	8050	9737	7916	11370	8463	7142	5805	4143	4772	5400
MIN (WY)	1955	1986	1973	1937	1939	1936	1993	1996	1941	1985	1956	1971
MIN (WY)	139	84.5	295	465	630	1189	1321	662	504	279	155	146
(WY)	1931	1931	1999	1925	1934	1990	1925	1926	1925	1930	1930	1925

SUMMARY STATISTICS

FOR 1999 CALENDAR YEAR

FOR 2000 WATER YEAR

WATER YEARS 1925 - 2000

ANNUAL TOTAL	708055		793254									
ANNUAL MEAN	1940	† +44	2167	† +9					2603			
HIGHEST ANNUAL MEAN									3944			1996
LOWEST ANNUAL MEAN									1223			1925
HIGHEST DAILY MEAN	18400	Apr 10	24700	Feb 19					58100		Mar 18	1936
LOWEST DAILY MEAN	e220	Jan 2	280	Nov 17					39		Nov 16	1930
ANNUAL SEVEN-DAY MINIMUM	a313	Jan 1	531	Nov 16					62		Nov 14	1930
INSTANTANEOUS PEAK FLOW			35500	Aug 6					b103000		Oct 16	1954
INSTANTANEOUS PEAK STAGE			13.75	Aug 6					21.96		Oct 16	1954
ANNUAL RUNOFF (CFSM)	1.46		1.63						1.96			
ANNUAL RUNOFF (INCHES)	19.86		22.25						26.67			
10 PERCENT EXCEEDS	5030		4620						5800			
50 PERCENT EXCEEDS	851		1390						1620			
90 PERCENT EXCEEDS	487		629						594			

STATISTICS OF MONTHLY MEAN DATA FOR WATER YEARS 1909 - 1924, BY WATER YEAR (WY) (PRIOR TO REGULATION)

	OCT	NOV	DEC	JAN	FEB	MAR	APR	MAY	JUN	JUL	AUG	SEP
MEAN	1126	1653	2574	4697	4098	5490	3830	2696	2379	1110	764	1100
MAX (WY)	5117	4937	5795	8679	9354	9777	6572	6675	5224	5102	1904	5158
MIN (WY)	1912	1914	1922	1913	1918	1912	1914	1924	1910	1912	1912	1911
MIN (WY)	36.4	68.4	342	503	1589	1913	1335	1125	938	221	99.5	132
(WY)	1909	1909	1909	1918	1924	1915	1921	1911	1922	1918	1910	1922

SUMMARY STATISTICS

WATER YEARS 1909 - 1924

ANNUAL MEAN	2620											
HIGHEST ANNUAL MEAN	3976				1912							
LOWEST ANNUAL MEAN	1879				1923							
HIGHEST DAILY MEAN	59200			Mar 21	1912							
LOWEST DAILY MEAN	11			Oct 18	1910							
ANNUAL SEVEN-DAY MINIMUM	14			Oct 15	1910							
INSTANTANEOUS PEAK FLOW	c65900			Mar 29	1924							
INSTANTANEOUS PEAK STAGE	d20.5			Mar 29	1924							
INSTANTANEOUS LOW FLOW	11			Sep 23	1908f							
ANNUAL RUNOFF (CFSM)	1.98											
ANNUAL RUNOFF (INCHES)	26.84											
10 PERCENT EXCEEDS	6200											
50 PERCENT EXCEEDS	1370											
90 PERCENT EXCEEDS	195											

† Change in contents, equivalent in cubic feet per second, in Deep Creek Reservoir and Youghiogheny River Lake. Records of contents in Deep Creek Reservoir furnished by Reliant Energy. Records of contents in Youghiogheny River Lake furnished by U.S. Army Corps of Engineers.

a Computed using estimated daily discharges.

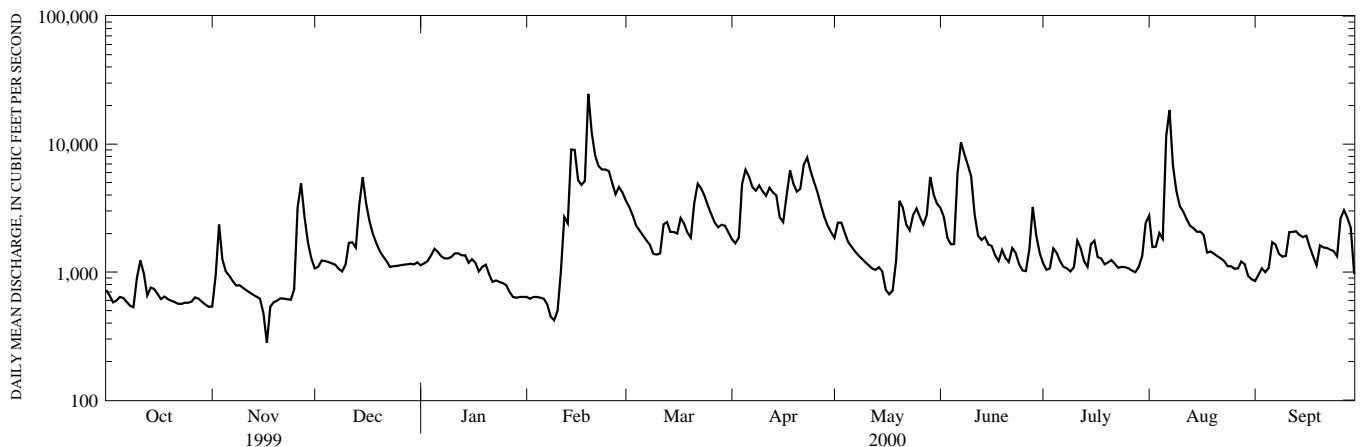
b From rating curve extended above 55,000 ft³/s.

c Estimated from hydrograph.

d From graph based on gage readings.

e Estimated.

f Also Sept. 26, 27, 1908 and Oct. 18, 1910.



1-YEAR HYDROGRAPH
OCTOBER 1, 1999 TO SEPTEMBER 30, 2000