

BEAVER RIVER BASIN

03106500 SLIPPERY ROCK CREEK AT WURTEMBERG, PA

LOCATION.--Lat 40°53'02", long 80°14'02", Lawrence County, Hydrologic Unit 05030105, on left bank at downstream side of highway bridge at Camp Allegheny, 2 mi north of Wurtemburg, and 2.8 mi upstream from mouth.

DRAINAGE AREA.--398 mi².

PERIOD OF RECORD.--October 1911 to current year. Monthly discharge only for some periods, published in WSP 1305.

REVISED RECORDS.--WSP 743: Drainage area. WSP 1305: 1914-18, 1920-22, 1923-24 (M), 1925-28, 1930. WSP 1385: 1932, 1935, 1936 (M), 1937-39. WSP 1625: 1955.

GAGE.--Water-stage recorder. Datum of gage is 832.06 ft above sea level. Jan. 1, 1912 to Sept. 30, 1922, nonrecording gage at site 1.5 mi downstream at datum 13.77 ft lower and Oct. 1, 1922 to Sept. 30, 1940, nonrecording gage at site 2 mi downstream at datum 18.92 ft lower.

REMARKS.--Records good except those for estimated daily discharges, which are poor. Some regulation since May 1969 by Lake Arthur (station 03106280) 13 mi upstream. Several measurements of water temperature were made during the year. U.S. Army Corps of Engineers satellite telemetry at station.

PEAK DISCHARGES FOR CURRENT YEAR.--Peak discharges greater than a base discharge of 3,500 ft³/s and maximum (*):

Date	Time	Discharge ft ³ /s	Gage Height (ft)	Date	Time	Discharge ft ³ /s	Gage Height (ft)
Jan. 4	2245	3,610	5.09	Apr. 8	2100	4,600	5.78
Apr. 4	1900	*4,980	*6.03				

DISCHARGE, CUBIC FEET PER SECOND, WATER YEAR OCTOBER 1999 TO SEPTEMBER 2000
DAILY MEAN VALUES

DAY	OCT	NOV	DEC	JAN	FEB	MAR	APR	MAY	JUN	JUL	AUG	SEP
1	135	62	199	e170	e160	710	316	357	386	296	108	76
2	101	152	195	e170	e150	738	332	443	345	241	106	73
3	75	1130	186	e230	e145	685	1770	459	1230	259	97	70
4	66	766	183	2670	e140	610	4850	381	840	403	95	69
5	59	329	192	2550	e135	563	3940	365	549	362	93	72
6	58	197	253	1230	e130	486	2170	398	719	298	155	67
7	58	145	324	848	e130	351	1510	362	1040	196	405	67
8	53	120	269	681	e125	333	3280	335	627	170	404	60
9	54	106	232	587	e125	313	3950	309	442	157	261	60
10	67	98	259	550	e125	298	2450	318	356	157	161	61
11	75	92	492	550	e230	283	1810	412	287	198	130	79
12	73	88	388	526	e450	353	1430	341	317	173	115	91
13	70	80	313	491	e740	432	1150	295	991	152	107	146
14	82	78	839	439	1500	386	986	324	676	153	100	149
15	90	78	1860	389	1230	352	864	290	699	170	94	112
16	87	78	1210	e330	996	331	768	240	597	254	90	115
17	76	78	711	e270	789	542	795	215	483	362	88	134
18	70	77	489	e250	686	538	775	212	470	275	88	120
19	67	72	398	e230	697	424	665	515	384	199	88	97
20	67	73	363	e220	697	381	598	859	298	146	85	85
21	67	78	433	e200	603	544	684	435	260	134	79	87
22	61	84	395	e190	663	710	860	339	370	160	74	90
23	64	83	321	e200	1290	569	755	397	329	165	85	95
24	68	78	256	e200	1620	478	616	945	286	133	187	171
25	77	78	276	e190	1470	436	543	670	245	119	145	260
26	81	143	292	e180	1280	398	466	448	195	110	105	172
27	80	548	e230	e170	990	372	419	333	750	103	90	144
28	69	411	e200	e180	941	392	399	379	1160	98	88	119
29	65	262	e190	e170	818	389	383	825	582	96	103	102
30	63	220	e190	e170	---	359	370	653	409	100	91	92
31	61	---	e180	e160	---	332	---	456	---	104	84	---
TOTAL	2239	5884	12318	15391	19055	14088	39904	13310	16322	5943	4001	3135
MEAN	72.2	196	397	496	657	454	1330	429	544	192	129	104
MAX	135	1130	1860	2670	1620	738	4850	945	1230	403	405	260
MIN	53	62	180	160	125	283	316	212	195	96	74	60
CFSM	.18	.49	1.00	1.25	1.65	1.14	3.34	1.08	1.37	.48	.32	.26
IN.	.21	.55	1.15	1.44	1.78	1.32	3.73	1.24	1.53	.56	.37	.29

e Estimated.

BEAVER RIVER BASIN

03106500 SLIPPERY ROCK CREEK AT WURTEMBERG, PA--Continued

STATISTICS OF MONTHLY MEAN DATA FOR WATER YEARS 1969 - 2000, BY WATER YEAR (WY) (SINCE REGULATION)

	OCT	NOV	DEC	JAN	FEB	MAR	APR	MAY	JUN	JUL	AUG	SEP
MEAN	272	554	798	702	881	1052	968	629	526	337	266	244
MAX	741	1822	1576	1369	1949	1972	1608	1400	2075	1109	1323	992
(WY)	1976	1986	1978	1999	1981	1972	1987	1983	1989	1990	1980	1975
MIN	56.5	82.2	178	153	289	243	345	215	112	84.8	64.4	53.0
(WY)	1992	1992	1990	1977	1987	1969	1971	1976	1992	1998	1991	1999

SUMMARY STATISTICS FOR 1999 CALENDAR YEAR FOR 2000 WATER YEAR WATER YEARS 1969 - 2000

ANNUAL TOTAL		157254		151590								
ANNUAL MEAN		431		414					601			
HIGHEST ANNUAL MEAN									813			1984
LOWEST ANNUAL MEAN									406			1988
HIGHEST DAILY MEAN				5450	Jan 24		4850	Apr 4	8620		Jun 24	1972
LOWEST DAILY MEAN				47	Sep 28		53	Oct 8	40		Sep 3	1991
ANNUAL SEVEN-DAY MINIMUM				48	Sep 15		59	Oct 4	43		Aug 28	1991
INSTANTANEOUS PEAK FLOW							4980	Apr 4	9090		Jun 24	1972
INSTANTANEOUS PEAK STAGE							6.03	Apr 4	8.09		Jun 24	1972
INSTANTANEOUS LOW FLOW							52	Oct 9	40		Sep 3	1991
ANNUAL RUNOFF (CFSM)				1.08			1.04		1.51			
ANNUAL RUNOFF (INCHES)				14.70			14.17		20.50			
10 PERCENT EXCEEDS				1070			842		1360			
50 PERCENT EXCEEDS				228			259		365			
90 PERCENT EXCEEDS				59			76		94			

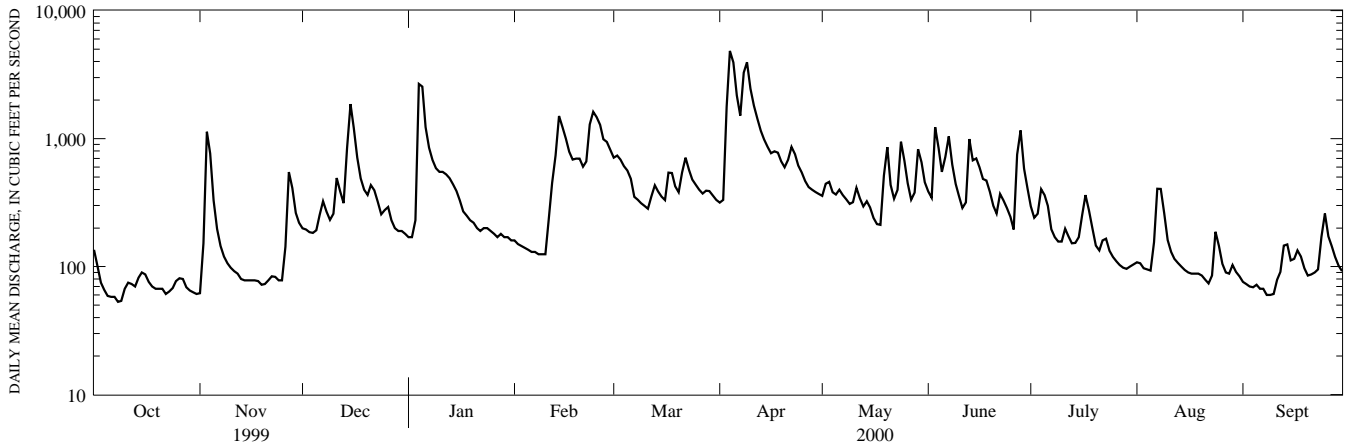
STATISTICS OF MONTHLY MEAN DATA FOR WATER YEARS 1912 - 1968, BY WATER YEAR (WY) (PRIOR TO REGULATION)

	OCT	NOV	DEC	JAN	FEB	MAR	APR	MAY	JUN	JUL	AUG	SEP
MEAN	237	379	589	839	856	1203	911	653	386	237	191	160
MAX	1391	1329	2088	3161	2089	2728	1974	1472	1559	1307	905	1675
(WY)	1912	1922	1928	1937	1956	1913	1940	1924	1956	1958	1956	1926
MIN	37.7	43.0	58.5	56.3	94.7	291	238	94.3	79.3	54.8	35.3	38.2
(WY)	1964	1931	1931	1931	1934	1931	1925	1934	1936	1944	1930	1944

SUMMARY STATISTICS WATER YEARS 1912 - 1968

ANNUAL MEAN	552
HIGHEST ANNUAL MEAN	917
LOWEST ANNUAL MEAN	216
HIGHEST DAILY MEAN	16700
LOWEST DAILY MEAN	20
ANNUAL SEVEN-DAY MINIMUM	24
INSTANTANEOUS PEAK FLOW	a19000
INSTANTANEOUS PEAK STAGE	b12.05
INSTANTANEOUS LOW FLOW	c16
ANNUAL RUNOFF (CFSM)	1.39
ANNUAL RUNOFF (INCHES)	18.85
10 PERCENT EXCEEDS	1390
50 PERCENT EXCEEDS	248
90 PERCENT EXCEEDS	58

- a From rating curve extended above 14,000 ft³/s.
- b From floodmark, site and datum then in use.
- c Minimum observed.



1-YEAR HYDROGRAPH
OCTOBER 1, 1999 TO SEPTEMBER 30, 2000