

DELAWARE RIVER BASIN

01428500 DELAWARE RIVER ABOVE LACKAWAXEN RIVER NEAR BARRYVILLE, NY

LOCATION.--Lat 41°30'32", long 74°59'10", Sullivan County, Hydrologic Unit 02040101, on left bank, 1.6 mi upstream from Lackawaxen River, and 4.6 mi northwest of Barryville. Water-quality sampling site at discharge station.

DRAINAGE AREA.--2,020 mi².

WATER-DISCHARGE RECORDS

PERIOD OF RECORD.--October 1940 to current year.

REVISED RECORDS.--WDR NY-82-1: Drainage area.

GAGE.--Water-stage recorder. Datum of gage is 600.22 ft above sea level.

REMARKS.--Records good except those for estimated daily discharges, which are poor. Subsequent to September 1954, entire flow from 371 mi² of drainage area controlled by Pepacton Reservoir, and subsequent to October 1963, entire flow from 454 mi² of drainage area controlled by Cannonsville Reservoir. Part of flow of these reservoirs diverted for New York City municipal supply. Remainder of flow (except for conservation releases and spill) impounded for release during periods of low flow in the lower Delaware River basin, as directed by the Delaware River Master. National Weather Service telephone gage-height telemeter at station. Information on the above reservoirs can be found in the annual Water Data Report NY-01-1.

EXTREMES FOR PERIOD OF RECORD.--Maximum discharge, 130,000 ft³/s, Aug. 19, 1955, gage height, 26.40 ft, from floodmarks in gage house, from rating curve extended above 55,000 ft³/s, on basis of slope-area measurement at gage height 23.19 ft; minimum discharge, 122 ft³/s, Sept. 5, 1953, gage height, 1.11 ft.

EXTREMES FOR CURRENT YEAR.--Maximum discharge, 46,900 ft³/s, Dec. 18, gage height, 14.33 ft; minimum, 605 ft³/s, Jan. 23, gage height, 2.21 ft, result of freezeup.

DISCHARGE, CUBIC FEET PER SECOND, WATER YEAR OCTOBER 2000 TO SEPTEMBER 2001
DAILY MEAN VALUES

DAY	OCT	NOV	DEC	JAN	FEB	MAR	APR	MAY	JUN	JUL	AUG	SEP
1	795	1050	1540	e1900	e1400	e1300	10500	1770	1450	1320	1200	1650
2	779	1050	1390	e1900	e1300	e1400	8370	1680	2790	1610	1100	1520
3	754	1100	1170	e1800	e1300	e1400	7100	1590	4460	1410	963	1540
4	720	1150	1040	e1800	e1300	e1300	7090	1420	4350	1030	1300	1280
5	730	1090	e1100	e1800	e1400	e1200	7960	1250	3430	941	1320	1240
6	1390	1030	e1100	e2000	e1500	e1300	9160	1130	2720	933	1200	1400
7	2800	1040	e1000	e2200	e1600	e1300	9630	1070	2260	947	1150	1250
8	1870	1060	e1100	e2000	e1600	e1300	13900	1030	1950	1090	1080	1510
9	1400	955	e1100	e1800	e1400	e1200	15100	1010	1680	1110	1120	1560
10	1230	1170	e1000	e1600	e1600	e1200	25800	990	1500	999	979	1330
11	1150	2920	e1000	e1400	e1700	e1100	23400	962	1380	1150	1310	1230
12	1120	2410	e1100	e1400	e1600	e1100	18800	930	1360	1030	1400	1230
13	1070	1850	e1100	e1400	e1600	e1200	17100	918	1370	853	1260	1180
14	1090	1690	e1000	e1300	e1700	e1500	15800	753	1270	862	1140	1160
15	1100	2220	e1000	e1300	e1900	e1700	12400	744	1230	1100	1130	1410
16	1070	2200	e1100	e1200	e1900	e1600	10700	841	1280	999	1120	1570
17	1110	1900	13200	e1200	e1700	e1700	9850	957	3310	843	1120	1340
18	1960	1730	30400	e1200	e1600	e1900	8520	994	3390	858	1450	1260
19	4980	1590	11600	e1100	e1500	e2000	7140	1160	2190	845	1340	1220
20	3640	1470	8810	e1100	e1700	e2000	5830	1130	1760	958	1120	1300
21	2790	1380	7120	e1100	e1700	e2400	4910	1140	1690	1110	1160	1430
22	2290	1310	6130	e1000	e1600	6880	4520	1120	1420	1320	1180	1520
23	1920	1210	e4700	e1100	e1400	8730	4080	1380	1250	1000	1180	1110
24	1690	1030	e4000	e1100	e1500	8190	3710	1460	1290	874	1270	870
25	1560	1120	e3200	e1100	e1500	6620	3290	1280	1520	888	1430	772
26	1450	1200	e2800	e1000	e1600	5380	2900	1090	1300	1000	1390	2040
27	1330	1890	e2600	e1000	e1600	4440	2570	1730	1250	1170	1250	1520
28	1260	1860	e2300	e960	e1500	4100	2280	2290	1260	1510	1360	1000
29	1210	1610	e2200	e940	---	3870	2070	2460	1340	1500	1480	800
30	1130	1520	e2000	e900	---	8400	1900	1950	1220	1250	1490	1200
31	1080	---	e2000	e1100	---	15100	---	1620	---	1180	1590	---
TOTAL	48468	44805	120900	42700	43700	102810	276380	39849	58670	33690	38582	39442
MEAN	1563	1494	3900	1377	1561	3316	9213	1285	1956	1087	1245	1315
MAX	4980	2920	30400	2200	1900	15100	25800	2460	4460	1610	1590	2040
MIN	720	955	1000	900	1300	1100	1900	744	1220	843	963	772

STATISTICS OF MONTHLY MEAN DATA FOR WATER YEARS 1964 - 2001, BY WATER YEAR (WY)

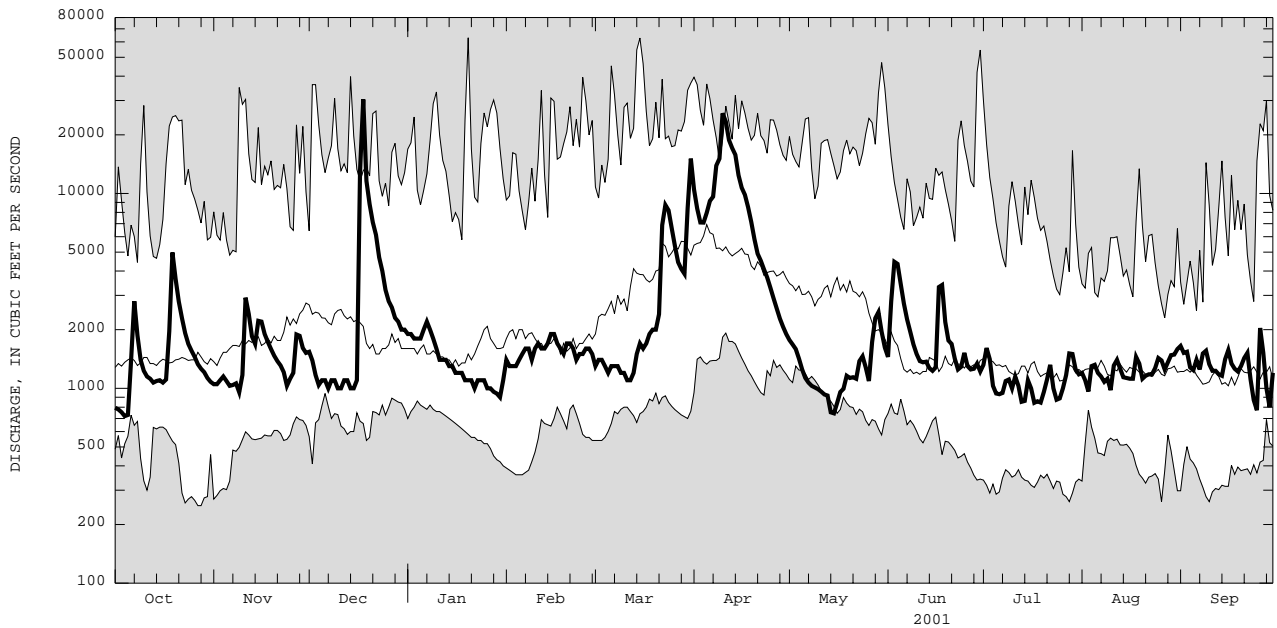
MEAN	2004	2725	3102	2766	2956	5151	6551	4054	2305	1635	1392	1487
MAX	7404	7448	11940	8335	9389	12050	16500	8615	6701	4087	3033	4186
(WY)	1978	1997	1997	1978	1976	1977	1993	1984	1972	1996	1994	1987
MIN	527	610	1114	687	712	1399	1878	1161	673	328	465	448
(WY)	1964	1965	1999	1977	1980	1981	1985	1965	1965	1965	1965	1965

e Estimated.

DELAWARE RIVER BASIN

01428500 DELAWARE RIVER ABOVE LACKAWAXEN RIVER NEAR BARRYVILLE, NY--Continued

SUMMARY STATISTICS	FOR 2000 CALENDAR YEAR		FOR 2001 WATER YEAR		WATER YEARS 1964 - 2001	
ANNUAL TOTAL	1386030		889996		3008	
ANNUAL MEAN	3787		2438		4650	
HIGHEST ANNUAL MEAN					1973	
LOWEST ANNUAL MEAN					1297	
HIGHEST DAILY MEAN	30400	Dec 18	30400	Dec 18	63000	Jan 20 1996
LOWEST DAILY MEAN	688	Sep 8	720	Oct 4	250	Oct 27 1963
ANNUAL SEVEN-DAY MINIMUM	783	Sep 29	872	May 11	264	Oct 23 1963
10 PERCENT EXCEEDS	8960		4590		6710	
50 PERCENT EXCEEDS	1930		1380		1620	
90 PERCENT EXCEEDS	986		1000		870	



CURRENT WATER YEAR DAILY MEAN DISCHARGE (BOLD) WITH DAILY MEDIAN FOR PERIOD OF RECORD.
 SHADED AREAS SHOW HIGHEST AND LOWEST DAILY MEAN FOR PERIOD OF RECORD THROUGH PREVIOUS WATER YEAR.

DELAWARE RIVER BASIN

01428500 DELAWARE RIVER ABOVE LACKAWAXEN RIVER NEAR BARRYVILLE, NY--Continued

WATER TEMPERATURE, DEGREES CELSIUS, WATER YEAR OCTOBER 2000 TO SEPTEMBER 2001

DAY	MAX	MIN	MEAN	MAX	MIN	MEAN	MAX	MIN	MEAN	MAX	MIN	MEAN
	FEBRUARY			MARCH			APRIL			MAY		
1	.0	.0	---	1.0	.0	.0	3.0	2.5	2.5	18.5	13.0	15.5
2	.0	.0	---	.5	.0	.5	3.5	3.0	3.0	20.0	15.0	17.5
3	.0	.0	---	1.5	.0	.5	5.5	2.5	3.5	22.0	16.5	19.0
4	.0	.0	.0	.5	.0	.0	7.0	3.5	4.5	23.5	18.5	20.5
5	.0	.0	.0	.5	.0	.0	7.0	4.0	5.5	22.5	18.5	20.5
6	.0	.0	---	.5	.0	.0	6.0	4.5	5.0	21.5	16.0	18.5
7	---	---	---	3.0	.0	1.0	5.0	3.5	4.5	21.0	15.5	18.0
8	.0	.0	---	1.5	.0	.5	5.0	4.0	4.5	21.0	15.5	18.0
9	.0	.0	.0	1.5	.0	.5	7.5	3.0	5.0	21.5	16.5	18.5
10	.0	.0	.0	3.5	.0	1.0	8.5	5.5	6.5	23.0	17.0	19.5
11	.0	.0	.0	2.0	.0	.5	6.0	5.0	5.5	24.0	18.0	21.0
12	1.0	.0	.0	4.5	.0	1.5	6.0	5.0	5.5	23.0	19.5	21.0
13	1.0	.0	.0	1.5	.5	1.0	8.0	5.5	6.5	22.5	17.5	19.5
14	.0	.0	.0	2.5	.0	1.0	8.0	7.0	7.5	20.5	16.0	18.0
15	.5	.0	.0	1.5	.0	1.0	7.5	6.5	7.0	21.5	15.0	18.0
16	.0	.0	.0	2.0	.0	1.0	8.0	7.0	7.5	21.0	15.5	18.0
17	1.5	.0	.0	1.0	.5	1.0	7.5	6.5	7.0	18.0	16.0	17.0
18	1.0	.0	.0	3.0	.0	1.0	7.5	5.5	6.5	16.0	15.5	16.0
19	1.0	.0	.0	4.0	.0	1.5	7.5	5.5	6.5	21.5	15.0	18.0
20	1.5	.0	.0	3.5	.0	1.5	7.5	6.0	7.0	19.5	16.5	18.0
21	1.5	.0	.0	1.0	.5	.5	9.0	7.0	8.0	17.5	16.0	16.5
22	.0	.0	.0	1.5	.5	1.0	13.0	9.0	10.5	16.5	15.5	16.0
23	.0	.0	.0	4.0	1.0	2.0	15.0	11.5	13.0	16.5	15.5	16.0
24	1.0	.0	.0	3.5	2.5	3.0	16.0	14.5	15.0	20.0	15.5	17.0
25	.0	.0	.0	3.5	2.0	2.5	14.5	12.0	13.5	18.0	16.0	17.0
26	.5	.0	.5	3.0	1.5	2.0	14.5	11.0	12.0	17.0	16.0	16.0
27	1.5	.0	.5	2.5	1.0	1.5	15.0	11.0	12.5	17.0	15.5	16.0
28	2.0	.0	.5	4.0	1.5	2.5	14.5	11.5	12.5	18.5	15.5	17.0
29	---	---	---	3.5	2.5	3.0	15.5	10.5	12.5	18.5	16.0	17.0
30	---	---	---	3.0	2.0	2.5	16.0	11.0	13.5	18.0	15.5	16.5
31	---	---	---	2.5	2.0	2.0	---	---	---	18.5	14.0	16.0
MONTH	---	---	---	4.5	.0	1.0	16.0	2.5	8.0	24.0	13.0	18.0
	JUNE			JULY			AUGUST			SEPTEMBER		
1	17.5	14.0	15.5	28.0	24.5	26.5	27.0	21.5	24.0	22.0	19.5	20.5
2	16.5	15.0	15.5	24.5	21.5	23.0	28.0	23.0	25.0	22.0	18.0	19.5
3	16.5	15.0	15.5	23.0	19.5	21.5	28.0	24.0	25.5	21.5	17.5	19.5
4	16.0	15.0	15.5	24.5	20.5	22.5	28.0	24.0	25.5	20.0	18.0	19.0
5	17.5	15.0	16.0	25.0	22.0	23.0	28.5	24.0	26.0	22.0	17.5	19.5
6	19.0	16.0	17.5	24.5	21.0	22.5	28.5	24.0	26.5	22.0	17.5	19.5
7	20.5	17.0	18.5	25.0	20.0	22.5	29.5	25.0	27.0	22.5	17.5	20.0
8	21.5	17.5	19.5	23.5	21.5	22.5	30.0	25.0	27.0	22.5	18.5	20.5
9	22.0	17.5	20.0	26.5	21.5	24.0	30.5	25.5	28.0	23.0	19.5	21.0
10	23.0	18.0	20.5	27.5	23.0	25.0	28.5	26.5	27.5	22.0	20.0	20.5
11	21.5	19.5	20.5	27.5	23.5	25.5	26.5	24.5	25.0	23.0	19.0	20.5
12	24.0	19.0	21.5	25.5	22.5	24.0	24.5	22.5	23.5	22.5	18.0	20.5
13	26.0	21.0	23.5	23.5	21.0	22.0	24.0	21.5	22.5	23.0	18.5	20.5
14	28.0	23.5	25.5	24.5	20.5	22.0	25.0	20.5	22.5	20.5	18.0	19.0
15	29.0	24.5	27.0	24.5	20.0	22.0	25.5	21.0	23.5	20.0	16.5	18.0
16	29.0	26.0	27.0	26.5	21.0	23.5	26.0	21.5	23.5	19.5	15.5	17.5
17	26.0	22.5	24.0	25.0	23.0	24.0	25.5	22.5	24.0	20.0	15.5	18.0
18	24.5	21.5	23.0	27.5	22.5	25.0	24.0	21.5	23.0	20.0	16.5	18.0
19	26.0	22.0	24.0	27.5	23.5	25.5	24.0	21.0	22.5	20.0	17.0	18.5
20	27.5	23.0	25.0	28.5	23.5	25.5	25.5	21.5	23.5	---	18.0	---
21	25.0	22.5	24.0	28.0	23.5	25.5	24.5	21.5	23.0	20.5	17.5	19.0
22	23.5	21.5	22.5	27.5	23.5	25.5	25.5	21.0	23.0	21.0	18.0	19.5
23	23.5	21.5	22.5	28.5	23.0	25.5	22.5	20.5	21.5	22.0	18.0	20.0
24	24.5	21.0	22.5	30.0	24.5	27.0	24.0	20.0	21.5	20.0	19.0	19.5
25	25.0	21.0	23.0	31.0	26.5	28.5	23.5	19.0	21.5	20.0	18.5	19.5
26	28.0	22.0	25.0	28.0	25.0	27.0	22.5	19.0	21.0	18.5	17.0	17.5
27	28.5	23.5	26.0	28.0	23.0	25.0	21.5	20.0	20.5	17.0	15.5	16.5
28	29.0	25.0	27.0	26.0	22.0	24.0	23.0	19.0	20.5	15.5	14.5	15.0
29	29.0	25.0	27.0	24.0	21.5	23.0	24.5	19.5	21.0	17.0	14.5	15.5
30	30.0	25.5	27.5	25.0	21.0	23.0	21.0	18.5	19.5	16.0	13.5	---
31	---	---	---	26.0	20.5	23.0	21.5	18.5	20.0	---	---	---
MONTH	30.0	14.0	22.0	31.0	19.5	24.0	30.5	18.5	23.5	---	13.5	---