

**LEHIGH RIVER BASIN**

**01447720 TOBYHANNA CREEK NEAR BLAKESLEE, PA**

**LOCATION.**--Lat 41°05'05", long 75°36'21", Carbon County, Hydrologic Unit 02040106, on left bank 50 ft downstream from bridge on State Highway 940, 500 ft downstream from Shingle Mill Run, and 1.5 mi southwest of Blakeslee.

**DRAINAGE AREA.**--118 mi<sup>2</sup>.

**WATER-DISCHARGE RECORDS**

**PERIOD OF RECORD.**--October 1961 to current year.

**GAGE.**--Water-stage recorder. Datum of gage is 1,511.23 ft above sea level. Prior to Jan. 16, 1962, nonrecording gage at site 50 ft upstream at same datum.

**REMARKS.**--Records good except those for estimated daily discharges, which are poor. Power generation at Pocono Lake about 5.0 mi upstream since 1985 and minor diversion from Tunkhannock Creek Basin into Wild Creek Basin. Satellite and landline telemetry at station.

**EXTREMES OUTSIDE PERIOD OF RECORD.**--Flood of Aug. 19, 1955, reached a stage of 19.41 ft, from floodmark, discharge, 35,300 ft<sup>3</sup>/s, by slope-area measurement.

**PEAK DISCHARGES FOR CURRENT YEAR.**--Peak discharges greater than base discharge of 1,600 ft<sup>3</sup>/s and maximum (\*):

Date	Time	Discharge ft <sup>3</sup> /s	Gage Height (ft)	Date	Time	Discharge ft <sup>3</sup> /s	Gage Height (ft)
Dec. 17	2030	*3,040	*7.49	No other peak greater than base discharge.			

**DISCHARGE, CUBIC FEET PER SECOND, WATER YEAR OCTOBER 2000 TO SEPTEMBER 2001  
DAILY MEAN VALUES**

DAY	OCT	NOV	DEC	JAN	FEB	MAR	APR	MAY	JUN	JUL	AUG	SEP
1	56	65	106	e170	211	161	616	187	171	79	54	54
2	56	58	96	e170	182	163	494	151	251	83	53	49
3	55	49	e82	e160	e160	149	424	141	308	75	62	48
4	55	49	e80	e160	e140	162	419	168	277	75	77	54
5	61	47	79	e150	135	181	456	173	246	91	62	54
6	85	46	73	e140	105	174	527	164	210	91	58	50
7	85	47	70	141	139	169	650	152	167	80	57	49
8	81	48	66	119	120	166	670	121	130	80	56	49
9	81	52	58	e120	113	130	641	114	89	96	54	47
10	81	74	70	e160	208	123	729	116	93	102	53	48
11	70	93	68	182	e200	163	700	116	96	157	71	47
12	41	113	58	180	e170	160	601	116	98	170	154	45
13	46	103	e84	178	169	204	513	115	102	147	161	46
14	51	101	95	177	163	271	434	108	111	79	129	56
15	50	119	98	178	159	242	376	82	90	75	96	50
16	50	118	101	121	169	234	378	74	87	73	79	48
17	52	94	1770	73	195	271	377	76	214	85	75	47
18	83	73	2090	73	e180	251	387	106	233	75	73	45
19	184	72	1140	79	e130	230	355	105	169	67	71	44
20	128	64	667	83	121	237	315	103	121	63	69	52
21	105	55	e410	e90	146	294	298	107	130	56	68	59
22	94	57	e300	e130	e150	569	304	135	131	45	62	67
23	83	e58	e280	e120	188	575	303	168	136	46	60	63
24	77	e59	e260	e110	163	516	282	217	170	68	49	65
25	74	e60	e230	e100	172	440	243	179	161	65	48	360
26	72	124	e220	e96	181	374	223	191	84	46	47	373
27	70	241	e220	e92	207	321	184	255	80	58	48	251
28	68	174	e190	e88	194	283	188	332	78	57	48	171
29	66	139	e180	e94	---	265	184	303	76	56	47	88
30	66	130	e180	156	---	554	186	254	72	56	47	93
31	66	---	e170	162	---	765	---	199	---	55	53	---
TOTAL	2292	2582	9591	4052	4570	8797	12457	4828	4381	2451	2141	2572
MEAN	73.9	86.1	309	131	163	284	415	156	146	79.1	69.1	85.7
MAX	184	241	2090	182	211	765	729	332	308	170	161	373
MIN	41	46	58	73	105	123	184	74	72	45	47	44
CFSM	.63	.73	2.62	1.11	1.38	2.40	3.52	1.32	1.24	.67	.59	.73
IN.	.72	.81	3.02	1.28	1.44	2.77	3.93	1.52	1.38	.77	.67	.81

**STATISTICS OF MONTHLY MEAN DATA FOR WATER YEARS 1962 - 2001, BY WATER YEAR (WY)**

MEAN	189	263	294	275	275	413	470	323	222	149	117	158
MAX	598	644	827	1019	768	948	1247	784	777	481	372	785
(WY)	1977	1973	1997	1996	1981	1977	1993	1989	1972	1969	1969	1987
MIN	31.2	48.1	58.0	40.6	100	172	162	134	64.1	30.3	34.3	28.0
(WY)	1964	1965	1981	1981	1980	1989	1985	1999	1999	1999	1964	1964

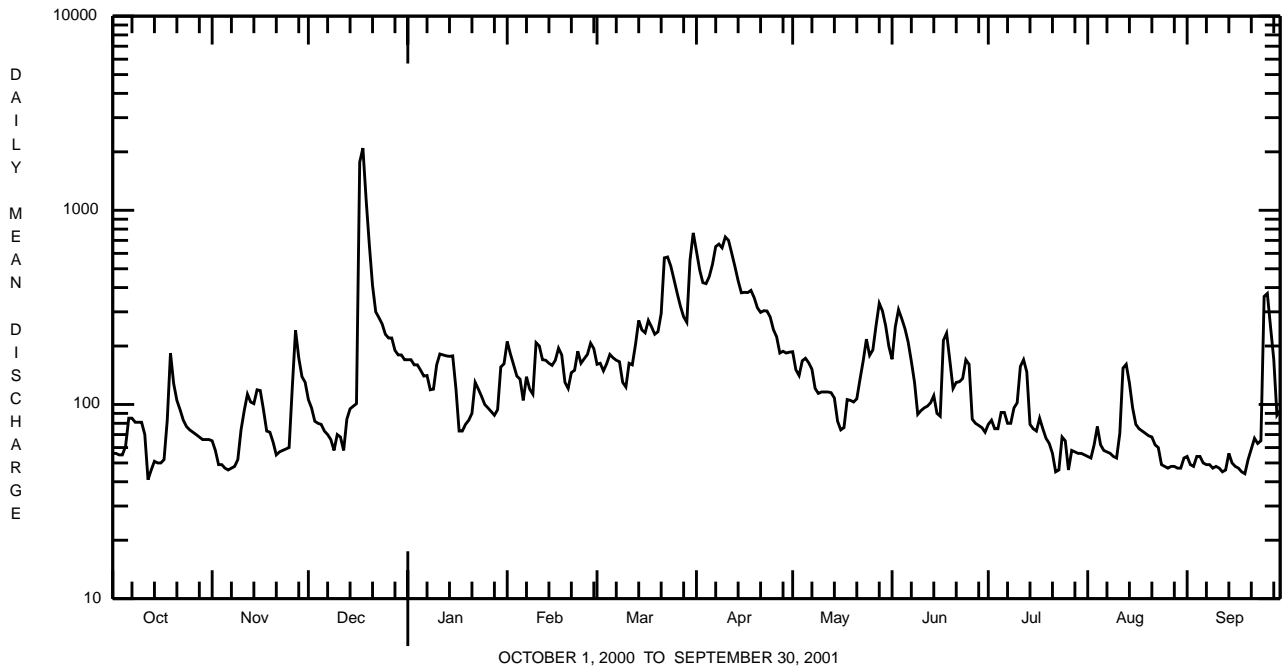
e Estimated.

LEHIGH RIVER BASIN

01447720 TOBYHANNA CREEK NEAR BLAKESLEE, PA--Continued

SUMMARY STATISTICS	FOR 2000 CALENDAR YEAR		FOR 2001 WATER YEAR		WATER YEARS 1962 - 2001	
ANNUAL TOTAL	80451		60714			
ANNUAL MEAN	220		166		262	
HIGHEST ANNUAL MEAN					399	1973
LOWEST ANNUAL MEAN					129	1965
HIGHEST DAILY MEAN	2090	Dec 18	2090	Dec 18	5540	Apr 6 1984
LOWEST DAILY MEAN	41	Oct 12	41	Oct 12	21	Aug 12 1999 <sup>a</sup>
ANNUAL SEVEN-DAY MINIMUM	48	Nov 3	47	Sep 7	23	Sep 21 1964
MAXIMUM PEAK FLOW			3040	Dec 17	9190	Sep 27 1985
MAXIMUM PEAK STAGE			7.49	Dec 17	12.33	Sep 27 1985
INSTANTANEOUS LOW FLOW					16	Aug 8 1991
ANNUAL RUNOFF (CFSM)	1.86		1.41		2.22	
ANNUAL RUNOFF (INCHES)	25.36		19.14		30.17	
10 PERCENT EXCEEDS	400		311		528	
50 PERCENT EXCEEDS	170		113		176	
90 PERCENT EXCEEDS	62		52		57	

<sup>a</sup> Also Sept. 3, 4, 1999.



## LEHIGH RIVER BASIN

01447720 TOBYHANNA CREEK NEAR BLAKESLEE, PA--Continued

## WATER-QUALITY RECORDS

PERIOD OF RECORD.--Water years 1930 to 1982.

## PERIOD OF DAILY RECORD.--

WATER TEMPERATURE: Water years 1980 to current year.

INSTRUMENTATION.--Temperature probe interfaced with a data collection platform.

REMARKS.--Water temperature records rated good. Interruptions in the record were due to malfunctions of the recording instrument.

## EXTREMES FOR PERIOD OF DAILY RECORD.--

WATER TEMPERATURE: Maximum, 28.5°C, July 5, 6, 1999; minimum, 0.0°C, many days during winters.

## EXTREMES FOR CURRENT YEAR--

WATER TEMPERATURE: Maximum, 26.5°C, Aug. 8; minimum, 0.0°C, many days during winter.

## WATER TEMPERATURE, DEGREES CELSIUS, WATER YEAR OCTOBER 2000 TO SEPTEMBER 2001

DAY	OCTOBER			NOVEMBER			DECEMBER			JANUARY		
	MAX	MIN	MEAN	MAX	MIN	MEAN	MAX	MIN	MEAN	MAX	MIN	MEAN
1	13.0	9.0	11.0	7.5	5.5	6.5	2.5	1.5	2.0	.0	.0	.0
2	14.5	11.0	12.5	8.0	5.5	6.5	1.5	.0	1.0	.0	.0	.0
3	16.0	12.0	13.5	8.5	5.5	7.0	.5	.0	.0	.0	.0	.0
4	15.0	11.5	13.5	9.0	7.0	8.0	3.5	.0	.5	.5	.0	.0
5	14.5	12.5	13.0	8.0	5.5	6.5	1.5	.5	1.0	.5	.0	.0
6	15.0	12.5	13.5	6.0	4.0	5.0	1.0	.0	.5	1.0	.5	.5
7	13.5	11.0	12.5	6.5	4.0	5.5	1.0	.5	.5	1.5	.5	1.0
8	11.0	8.5	9.5	8.0	5.5	6.5	1.5	.5	1.0	1.5	.5	1.0
9	9.5	7.0	8.5	9.0	8.0	8.5	1.5	.5	1.0	1.0	.0	.5
10	9.5	7.5	8.5	9.5	8.5	9.0	2.0	.0	.5	1.0	.0	.5
11	11.5	8.0	9.5	8.5	7.0	7.5	3.0	2.0	2.5	1.5	.5	1.0
12	11.0	7.5	9.5	7.5	6.5	7.0	3.0	.0	2.0	1.5	.0	.5
13	11.0	7.5	9.5	7.5	6.5	7.0	.5	.0	.0	1.5	.0	.5
14	12.0	8.5	10.5	7.5	5.5	7.0	2.5	.0	1.0	1.5	.0	1.0
15	13.0	9.5	11.5	5.5	4.5	5.0	2.5	1.5	2.0	2.0	1.5	1.5
16	12.5	11.5	11.5	5.5	4.5	5.0	3.5	1.5	2.5	2.5	1.5	2.0
17	12.0	10.5	11.0	5.5	4.5	5.0	4.0	2.5	3.0	2.0	1.5	1.5
18	11.5	10.5	11.0	4.5	3.5	4.0	2.5	1.0	1.5	1.5	1.0	1.5
19	11.5	9.5	10.5	3.5	2.5	3.0	1.5	1.0	1.5	2.0	1.0	1.5
20	11.5	8.0	10.0	2.5	1.0	2.0	1.0	.5	1.0	1.5	.5	1.0
21	12.5	9.0	10.5	2.0	1.0	1.5	1.0	.5	.5	.5	.0	.0
22	11.0	9.0	10.0	1.0	.0	.5	1.5	.0	.5	.0	.0	.0
23	10.0	7.0	8.5	.0	.0	.0	2.5	.0	.0	.0	.0	.0
24	11.0	8.0	9.5	.0	.0	.0	2.0	.0	.5	.0	.0	.0
25	12.0	9.5	10.5	.5	.0	.0	1.0	.0	.0	.5	.0	.0
26	12.0	9.5	10.5	3.5	.5	2.0	.0	.0	.0	.0	.0	.0
27	12.0	9.0	10.5	3.5	3.0	3.5	.0	.0	.0	.5	.0	.0
28	11.5	7.5	10.0	5.5	3.0	3.5	1.0	.0	.0	.5	.0	.0
29	7.5	5.5	6.5	4.0	3.0	3.5	.0	.0	.0	.5	.0	.0
30	7.5	5.0	6.0	3.5	2.0	3.0	.0	.0	.0	1.5	.5	1.0
31	7.5	5.0	6.5	---	---	---	.0	.0	.0	2.0	1.5	1.5
MONTH	16.0	5.0	10.3	9.5	.0	4.6	4.0	.0	.9	2.5	.0	.6

