

## DELAWARE RIVER BASIN

01427510 DELAWARE RIVER AT CALLICOON, NY  
(Pennsylvania Water-Quality Network Station)

**LOCATION.**--Lat 41°45'24", long 75°03'28", Wayne County, Pennsylvania, Hydrologic Unit 02040101, on right bank, 0.5 mi downstream from Callicoon Creek, 0.5 mi downstream from Interstate Bridge 7, and 0.8 mi southeast of Callicoon. Water-quality sampling site at discharge station.

**DRAINAGE AREA.**--1,820 mi<sup>2</sup>.

## WATER-DISCHARGE RECORDS

**PERIOD OF RECORD.**--June 1975 to current year.

**REVISED RECORDS.**--WDR NY-82-1: Drainage area. WDR NY-86-1: 1975-84 (M).

**GAGE.**--Water-stage recorder and crest-stage gage. Datum of gage is 734.88 ft above National Geodetic Vertical Datum of 1929.

**REMARKS.**--Records good except those for estimated daily discharges, which are poor. Subsequent to September 1954, entire flow from 371 mi<sup>2</sup> of drainage area controlled by Pepacton Reservoir, and subsequent to October 1963, entire flow from 454 mi<sup>2</sup> of drainage area controlled by Cannonsville Reservoir. Part of flow from these reservoirs diverted for New York City municipal supply. Remainder of flow (except for conservation releases and spill) impounded for release during period of low flow in the lower Delaware River basin, as directed by the Delaware River Master. Satellite and telephone gage-height and temperature telemeter at station. Information on the above reservoirs can be found in the annual Water-Data Report NY-02-1.

**EXTREMES FOR PERIOD OF RECORD.**--Maximum discharge, 95,600 ft<sup>3</sup>/s, Jan. 19, 1996, gage-height, 16.31 ft; minimum discharge, 306 ft<sup>3</sup>/s, Sept. 24, 25, 1997; minimum gage height, 2.20 ft, Sept. 13, 1977, Aug. 23, 1985.

**EXTREMES FOR CURRENT YEAR.**--Maximum discharge, 13,400 ft<sup>3</sup>/s, June 7, gage height, 6.21 ft; minimum recorded, 488 ft<sup>3</sup>/s, Sept. 22, but may have been less during period of ice effect, gage height, 2.61 ft.

DISCHARGE, CUBIC FEET PER SECOND, WATER YEAR OCTOBER 2001 TO SEPTEMBER 2002  
DAILY MEAN VALUES

DAY	OCT	NOV	DEC	JAN	FEB	MAR	APR	MAY	JUN	JUL	AUG	SEP
1	1080	1370	1400	e800	4510	1280	4680	4440	5840	1110	871	1140
2	1180	1360	1820	e740	5020	1170	4020	4410	3980	1140	899	818
3	1140	1320	1200	e700	3730	1400	3320	4860	2870	1160	1270	822
4	1170	1240	995	e680	3090	1910	3020	3760	2250	1120	1230	871
5	1320	1300	874	e680	e2500	1600	2540	3100	2370	957	1230	983
6	1370	1290	797	e700	2230	1450	2250	2640	4590	965	1130	981
7	1350	1240	759	e740	2130	1400	1990	2320	12400	828	1150	1270
8	1340	1140	865	e740	1710	1320	1780	2100	8180	862	1140	1200
9	1400	1220	779	e760	1570	1250	1680	1970	5240	867	1180	827
10	1500	1220	720	e760	1490	1400	1650	2040	3770	818	1280	763
11	1460	1170	858	e760	6140	1680	1580	1770	2910	753	1290	797
12	1460	1160	688	e760	5490	1450	1380	1690	2420	650	1290	864
13	1400	1150	668	e740	4080	1410	1300	4810	2370	900	1280	901
14	1340	1140	841	e700	e2900	1390	1630	10200	2330	897	1310	992
15	1510	1180	1370	e680	e2600	1390	3120	7580	3210	707	1320	836
16	1490	1200	1490	e640	2290	1450	3410	5190	3990	673	1390	613
17	1570	1190	1320	e600	2100	1590	2760	4020	3390	734	1380	565
18	1460	1200	3240	e560	1830	1460	2410	5750	2630	742	1310	658
19	1440	1160	4130	e540	1600	1420	2120	6840	2430	758	1280	621
20	1430	1200	3010	e520	1480	1480	1930	4860	1980	1060	1280	609
21	1450	1220	2470	e620	1680	1710	1770	3920	1720	1080	1310	867
22	1470	1230	2030	e720	2070	1970	1620	3260	1600	892	1260	554
23	1450	1230	1710	e760	1890	1750	1540	2710	1500	841	1190	1220
24	1520	1230	1630	e800	1640	1660	1390	2310	1630	1040	1250	1060
25	1650	1140	1670	e900	1500	1680	1350	2010	1490	841	1320	741
26	1550	1380	1440	e1300	1430	1930	1760	1750	1360	811	688	813
27	1470	1280	1230	e1600	1460	8420	1650	1580	1770	1220	866	788
28	1520	1030	e1100	e1500	1440	7140	2350	3340	1500	1120	876	1780
29	1500	982	e1000	e2400	---	5580	6630	4630	1280	817	979	1590
30	1500	991	e920	e3300	---	5220	5540	2960	1090	858	838	958
31	1330	---	e840	e5200	---	5150	---	3140	---	852	1030	---
TOTAL	43820	36163	43864	32900	71600	71110	74170	115960	94090	28073	36117	27502
MEAN	1414	1205	1415	1061	2557	2294	2472	3741	3136	905.6	1165	916.7
MAX	1650	1380	4130	5200	6140	8420	6630	10200	12400	1220	1390	1780
MIN	1080	982	668	520	1430	1170	1300	1580	1090	650	688	554

## STATISTICS OF MONTHLY MEAN DATA FOR WATER YEARS 1975 - 2002, BY WATER YEAR (WY)

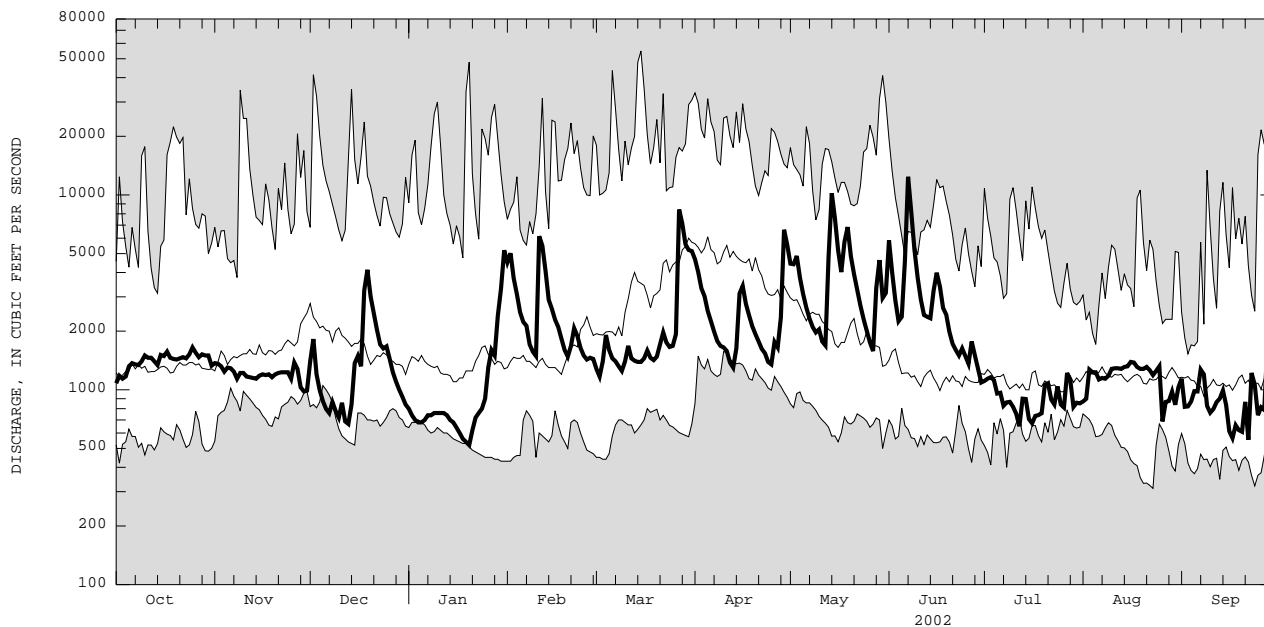
MEAN	1972	2528	2622	2428	2643	4506	5654	3500	1822	1363	1285	1383
MAX	6545	6561	11130	7594	7993	11080	14500	7866	4048	3571	2710	3716
(WY)	1978	1997	1997	1978	1976	1977	1993	1984	2000	1996	1994	1977
MIN	701	1130	1035	587	611	1177	1496	935	734	777	560	839
(WY)	1992	1979	1999	1977	1980	1981	1985	1985	1985	1981	1985	1994

e Estimated.

## DELAWARE RIVER BASIN

## 01427510 DELAWARE RIVER AT CALLICOON, NY--Continued

SUMMARY STATISTICS	FOR 2001 CALENDAR YEAR		FOR 2002 WATER YEAR		WATER YEARS 1975 - 2002	
ANNUAL TOTAL	706739		675369			
ANNUAL MEAN	1936		1850		2636	
HIGHEST ANNUAL MEAN					3972 1978	
LOWEST ANNUAL MEAN					1434 1985	
HIGHEST DAILY MEAN	24800	Apr 10	12400	Jun 7	54800	Mar 15 1986
LOWEST DAILY MEAN	453	Sep 24	520	Jan 20	312	Aug 23 1985
ANNUAL SEVEN-DAY MINIMUM	703	May 10	594	Jan 15	354	Aug 17 1985
10 PERCENT EXCEEDS	3070		3830		5990	
50 PERCENT EXCEEDS	1220		1380		1400	
90 PERCENT EXCEEDS	835		760		794	



CURRENT WATER YEAR DAILY MEAN DISCHARGE (BOLD) WITH DAILY MEDIAN FOR PERIOD OF RECORD.  
 SHADED AREAS SHOW HIGHEST AND LOWEST DAILY MEAN FOR PERIOD OF RECORD THROUGH PREVIOUS WATER YEAR.

## DELAWARE RIVER BASIN

01427510 DELAWARE RIVER AT CALLICOON, NY--Continued  
(Pennsylvania Water-Quality Network Station)

## WATER-QUALITY RECORDS

PERIOD OF RECORD.--April 2002 to current year.

## PERIOD OF DAILY RECORD.--

WATER TEMPERATURES: June 1975 to current year.

INSTRUMENTATION.--Water-temperature satellite telemeter provides 15-minute-interval readings. Prior to May 1989, water-temperature recorder provided one-hour-interval readings.

REMARKS.--Water temperature is affected by release of water from upstream reservoir. Other data for the Water-Quality Network can be found on pages 410-425.

## EXTREMES FOR PERIOD OF DAILY RECORD.--

WATER TEMPERATURES: Maximum, (water years 1976-2002), 30.5°C, July 12, 1987; minimum, 0.0°C on many days during winters.

## EXTREMES FOR CURRENT YEAR.--

WATER TEMPERATURES: Maximum, 30.0°C, July 3, 4; minimum, 0.0°C on many days during winter.

## WATER-QUALITY DATA, WATER YEAR OCTOBER 2001 TO SEPTEMBER 2002

Date	Time	AGENCY ANALYZING SAMPLE (CODE NUMBER) (00028)	DIS- CHARGE, INST. CUBIC FEET PER SECOND (00061)	SAM- PLING METHOD, CODES (82398)	OXYGEN, DIS- SOLVED (MG/L) (00300)	PH WATER WHOLE FIELD (STAND- ARD UNITS) (00400)	SPE- CIFIC CON- DUCT- ANCE (µS/CM) (00095)	TEMPER- ATURE WATER (DEG C) (00010)	HARD- NESS TOTAL (MG/L AS CACO3) (00900)	CALCIUM DIS- SOLVED (MG/L AS CA) (00915)	CALCIUM TOTAL RECOV- ERABLE (MG/L AS CA) (00916)	MAGNE- SIUM, DIS- SOLVED (MG/L AS MG) (00925)	MAGNE- SIUM, TOTAL RECOV- ERABLE (MG/L AS MG) (00927)
APR 2002 23...	1200	9813	1530	40	11.5	7.6	62	9.1	19	5.60	5.7	1.15	1.2
JUN 06...	1245	9813	4070	40	9.3	7.3	64	17.7	18	5.61	5.4	1.12	1.1
AUG 06...	1145	9813	993	40	10.3	8.8	83	21.0	26	7.50	7.3	1.82	1.8

Date	Time	ACIDITY TOTAL HEATED (MG/L AS CAC03) (70508)	ANC WATER UNFLTRD FET LAB (MG/L AS CAC03) (00417)	SULFATE DIS- SOLVED (MG/L AS SO4) (00945)	RESIDUE AT 105 DEG. C, DIS- SOLVED (MG/L) (00515)	RESIDUE TOTAL AT 105 DEG. C, SUS- PENDED (MG/L) (00530)	NITRO- GEN, AMMONIA TOTAL (MG/L AS N) (00610)	NITRO- GEN, NITRATE TOTAL (MG/L AS N) (00620)	NITRO- GEN, NITRITE TOTAL (MG/L AS N) (00615)	NITRO- GEN, TOTAL (MG/L AS N) (00600)	PHOS- PHORUS ORTHO TOTAL (MG/L AS P) (70507)	PHOS- PHORUS TOTAL (MG/L AS P) (00665)	OXYGEN DEMAND, BIO- CHEM- ICAL, 5 DAY (MG/L) (00310)	COPPER, DIS- SOLVED (µG/L AS CU) (01040)
APR 2002 23...	.0	12	6.9	14	<2	<.020	.18	<.040	.28	<.01	.011	1.0	<4	
JUN 06...	1.8	12	6.6	62	4	<.020	.16	<.040	.37	.04	.018	.6	<4	
AUG 06...	.0	16	7.4	58	<2	<.020	.36	<.040	.46	<.01	<.010	.7	<4	

Date	COPPER, TOTAL RECOV- ERABLE (µG/L AS CU) (01042)	IRON, DIS- SOLVED (µG/L AS FE) (01046)	IRON, TOTAL RECOV- ERABLE (µG/L AS FE) (01045)	LEAD, DIS- SOLVED (µG/L AS PB) (01049)	LEAD, TOTAL RECOV- ERABLE (µG/L AS PB) (01051)	MANGA- NESE, DIS- SOLVED (µG/L AS MN) (01056)	MANGA- NESE, TOTAL RECOV- ERABLE (µG/L AS MN) (01055)	NICKEL, DIS- SOLVED (µG/L AS NI) (01065)	NICKEL, TOTAL RECOV- ERABLE (µG/L AS NI) (01067)	ZINC, DIS- SOLVED (µG/L AS ZN) (01090)	ZINC, TOTAL RECOV- ERABLE (µG/L AS ZN) (01092)
APR 2002 23...	<4	<20	50	<1.0	<1.0	8.5	10	<4.0	<4.0	<5.0	<5.0
JUN 06...	<4	40	260	<1.0	<1.0	20	60	<4.0	<4.0	<5.0	<5.0
AUG 06...	<4	<20	140	<1.0	<1.0	10	30	<4.0	<4.0	<5.0	<5.0

## DELAWARE RIVER BASIN

## 01427510 DELAWARE RIVER AT CALLICOON, NY--Continued

WATER TEMPERATURE, DEGREES CELSIUS, WATER YEAR OCTOBER 2001 TO SEPTEMBER 2002

DAY	MAX	MIN	MEAN	MAX	MIN	MEAN	MAX	MIN	MEAN	MAX	MIN	MEAN
	OCTOBER			NOVEMBER			DECEMBER			JANUARY		
1	16.0	12.5	14.0	9.5	7.5	8.5	10.0	8.5	9.0	0.0	0.0	0.0
2	17.0	13.0	15.0	11.0	8.0	9.5	9.0	7.5	8.5	0.0	0.0	0.0
3	18.0	14.0	16.0	12.0	10.5	11.5	7.5	6.5	7.0	0.0	0.0	0.0
4	18.5	15.5	17.0	12.0	10.5	11.0	6.5	5.0	6.0	0.0	0.0	0.0
5	18.5	16.0	17.5	10.5	8.5	9.5	7.0	6.0	6.5	0.0	0.0	0.0
6	17.0	14.5	16.0	8.5	7.0	7.5	7.5	6.0	7.0	0.0	0.0	0.0
7	14.5	11.5	13.0	8.0	6.0	7.0	7.5	6.0	7.0	0.0	0.0	0.0
8	12.0	10.0	11.0	7.5	6.0	6.5	6.0	3.5	5.0	0.0	0.0	0.0
9	12.5	9.0	11.0	7.0	5.5	6.5	4.0	3.0	3.5	0.0	0.0	0.0
10	14.5	10.5	12.5	6.5	4.5	5.5	3.5	2.5	3.0	0.0	0.0	0.0
11	15.5	12.0	13.5	6.0	4.5	5.5	3.5	2.5	3.0	0.0	0.0	0.0
12	16.5	13.5	15.0	4.5	3.5	4.0	4.0	2.5	3.0	0.0	0.0	0.0
13	18.0	15.0	16.5	4.5	2.5	3.5	4.5	3.5	4.0	0.0	0.0	0.0
14	17.0	16.0	16.5	5.0	2.5	4.0	5.0	4.0	4.5	0.0	0.0	0.0
15	16.0	14.5	15.5	7.0	4.5	5.5	5.0	3.5	4.5	0.0	0.0	0.0
16	15.0	13.0	14.0	8.5	6.5	7.5	3.5	2.5	3.0	0.0	0.0	0.0
17	14.0	11.5	13.0	7.5	6.0	7.0	3.5	3.0	3.0	0.0	0.0	0.0
18	11.5	10.0	11.0	7.0	5.0	6.0	3.5	3.0	3.5	0.0	0.0	0.0
19	11.5	9.0	10.5	6.5	5.0	6.0	4.5	3.5	4.0	0.0	0.0	0.0
20	12.5	10.5	11.5	6.5	5.0	6.0	4.0	3.5	3.5	0.0	0.0	0.0
21	14.0	11.0	12.5	5.5	4.0	4.5	3.5	2.0	3.0	0.0	0.0	0.0
22	14.0	13.0	13.5	5.0	3.5	4.5	2.0	1.0	1.5	0.0	0.0	0.0
23	14.0	12.5	13.5	4.5	3.0	4.0	1.5	0.5	1.0	0.0	0.0	0.0
24	16.0	13.5	14.5	6.5	4.5	5.5	2.5	1.5	2.0	0.0	0.0	0.0
25	15.5	13.5	15.0	9.0	6.5	8.5	1.5	0.5	1.0	0.0	0.0	0.0
26	13.5	11.0	12.5	10.0	9.0	9.0	1.0	0.0	0.5	0.0	0.0	0.0
27	11.0	9.0	10.0	9.0	8.0	8.5	0.0	0.0	0.0	0.0	0.0	0.0
28	9.5	8.0	9.0	9.5	8.0	8.5	0.0	0.0	0.0	0.0	0.0	0.0
29	10.0	7.0	8.5	9.0	8.0	8.0	0.0	0.0	0.0	0.0	0.0	0.0
30	10.5	8.5	9.5	9.0	8.0	8.5	0.0	0.0	0.0	0.0	0.0	0.0
31	9.0	8.0	8.5	---	---	---	0.5	0.0	0.0	0.0	0.0	0.0
MONTH	18.5	7.0	13.1	12.0	2.5	6.9	10.0	0.0	3.5	0.0	0.0	0.0
DAY	MAX	MIN	MEAN	MAX	MIN	MEAN	MAX	MIN	MEAN	MAX	MIN	MEAN
	FEBRUARY			MARCH			APRIL			MAY		
1	1.5	0.0	1.0	3.5	0.5	2.0	9.0	7.0	8.0	10.5	7.0	8.5
2	1.5	0.5	1.0	2.5	0.5	1.5	7.0	6.0	6.5	9.5	9.0	9.5
3	1.0	0.0	0.5	5.0	2.5	3.5	7.0	5.5	6.5	10.0	8.5	9.0
4	1.5	0.0	1.0	4.0	2.0	3.0	7.0	5.0	5.5	11.5	8.0	9.5
5	0.5	0.0	0.0	2.5	0.5	1.5	5.5	3.5	4.5	14.0	9.5	12.0
6	0.5	0.0	0.0	4.0	0.0	2.0	5.5	3.0	4.0	16.0	11.5	13.5
7	1.5	0.0	0.5	5.0	1.5	3.0	7.0	2.0	4.5	16.5	13.5	15.0
8	3.0	0.5	1.5	7.0	2.5	4.5	7.0	4.5	5.5	18.0	14.0	15.5
9	4.0	1.5	2.5	8.5	5.5	7.0	9.0	6.0	7.5	15.5	13.0	14.0
10	3.0	2.0	2.5	8.5	4.0	6.5	12.0	7.5	9.5	16.0	12.0	14.0
11	2.5	1.0	2.0	5.0	2.5	3.5	13.5	8.5	10.5	17.0	12.0	14.5
12	1.0	0.0	0.5	3.5	2.0	2.5	12.0	9.0	10.5	14.5	12.0	13.0
13	1.5	0.0	1.0	3.5	2.5	3.0	12.5	11.0	11.5	12.0	10.5	11.0
14	1.0	0.0	0.0	7.5	3.0	5.0	16.0	11.0	13.5	10.5	9.5	10.0
15	1.0	0.0	0.0	9.0	5.0	7.0	17.0	13.5	15.0	11.5	9.0	10.0
16	2.5	0.5	1.5	8.0	6.0	7.5	18.5	15.0	16.5	13.0	10.5	12.0
17	3.5	2.0	2.5	6.5	4.5	5.5	20.0	16.0	17.5	15.0	12.5	13.5
18	3.0	1.0	2.0	5.0	3.5	4.0	21.5	17.5	19.0	13.5	10.0	12.0
19	3.0	0.0	1.5	4.5	3.0	3.5	21.0	17.5	19.5	10.0	9.0	9.5
20	3.5	2.0	2.5	3.5	2.0	2.5	19.0	15.0	17.0	10.0	8.0	9.0
21	5.5	3.5	4.5	6.0	2.0	3.5	15.0	12.5	14.0	10.5	8.5	9.0
22	5.0	4.0	4.5	3.5	1.0	2.0	12.5	9.0	10.5	13.0	8.0	10.5
23	5.0	3.0	4.0	4.5	0.5	2.5	10.0	7.5	8.5	16.0	10.5	13.0
24	4.5	1.5	3.0	6.0	2.0	4.0	13.0	6.5	9.5	16.5	13.0	14.5
25	5.0	2.0	3.5	5.5	4.0	4.5	10.5	8.0	9.0	18.5	13.5	16.0
26	6.5	2.5	4.5	4.0	2.5	3.5	10.5	7.0	8.5	17.5	15.0	16.0
27	5.5	3.5	5.0	2.5	2.0	2.5	12.0	6.5	9.5	19.0	15.0	17.0
28	3.5	1.5	2.5	4.5	2.0	3.5	10.5	8.5	9.0	18.0	15.5	17.0
29	---	---	---	6.5	4.0	5.0	9.0	7.5	8.5	16.0	14.0	15.0
30	---	---	---	9.0	6.0	7.5	7.5	6.5	7.0	18.5	15.0	16.5
31	---	---	---	9.0	7.5	8.5	---	---	---	18.5	17.0	17.5
MONTH	6.5	0.0	2.0	9.0	0.0	4.0	21.5	2.0	10.2	19.0	7.0	12.8

## DELAWARE RIVER BASIN

## 01427510 DELAWARE RIVER AT CALLICOON, NY--Continued

WATER TEMPERATURE, DEGREES CELSIUS, WATER YEAR OCTOBER 2001 TO SEPTEMBER 2002

DAY	MAX	MIN	MEAN	MAX	MIN	MEAN	MAX	MIN	MEAN	MAX	MIN	MEAN
	JUNE			JULY			AUGUST			SEPTEMBER		
1	18.0	16.5	17.0	27.5	23.0	25.5	27.5	23.5	25.5	20.5	18.5	19.0
2	18.5	16.5	17.5	29.0	24.0	26.5	27.0	23.5	25.5	21.0	17.5	19.0
3	18.5	15.5	17.0	30.0	25.5	28.0	26.5	23.5	25.0	23.5	18.5	21.0
4	18.0	15.5	17.0	30.0	25.5	27.5	25.5	21.0	23.0	24.0	20.5	22.5
5	19.5	16.0	17.5	27.5	24.0	25.5	24.0	21.5	23.0	22.5	20.0	21.5
6	18.0	16.0	17.5	24.5	21.5	23.0	22.5	20.0	21.5	22.5	17.5	20.0
7	16.0	15.0	15.5	24.5	19.5	22.5	21.5	18.0	20.0	21.5	17.5	19.5
8	16.5	15.0	15.5	26.5	20.5	23.5	21.0	17.0	19.5	22.0	17.0	19.5
9	18.0	15.5	17.0	25.0	22.5	24.0	22.5	17.0	19.5	23.5	18.0	20.5
10	20.5	17.0	19.0	25.5	22.0	24.0	22.5	17.5	20.0	24.5	20.0	22.5
11	22.5	18.5	20.5	24.0	20.0	22.5	23.0	18.0	20.5	23.5	18.5	20.5
12	22.0	20.0	21.0	25.0	19.5	22.5	23.5	19.0	21.0	19.5	16.0	18.0
13	20.5	19.0	20.0	26.0	20.5	23.5	24.0	19.5	22.0	20.0	15.5	18.0
14	19.0	16.5	17.5	24.5	21.5	23.0	22.5	20.0	21.5	20.5	16.5	18.5
15	16.5	15.0	15.5	25.5	21.5	23.5	23.0	20.0	21.5	20.0	18.5	19.5
16	16.5	14.5	15.5	26.0	22.5	24.5	22.0	20.0	21.0	21.0	19.0	20.0
17	18.5	15.5	17.0	27.5	21.5	24.5	23.5	20.0	21.5	21.0	18.0	20.0
18	20.5	16.0	18.0	28.0	24.0	26.5	23.5	20.0	22.0	21.5	17.5	20.0
19	22.0	17.0	19.5	27.0	24.5	26.0	23.0	19.5	21.5	21.0	18.5	20.0
20	24.0	18.5	21.0	27.5	23.5	25.5	22.0	20.0	21.0	22.5	19.5	21.0
21	25.0	20.0	22.0	25.0	21.5	23.0	22.5	18.0	20.5	22.5	20.5	21.5
22	25.0	20.5	23.0	26.5	21.5	24.0	21.0	17.5	19.5	22.0	21.0	21.5
23	25.0	22.0	23.0	25.5	23.0	24.5	22.5	19.0	20.5	21.5	19.0	20.5
24	26.0	21.5	24.0	25.5	22.0	24.0	21.0	18.0	19.5	20.5	16.5	18.5
25	26.5	22.0	24.5	24.0	21.0	22.5	21.0	17.0	19.0	19.5	16.0	18.0
26	27.0	23.0	25.0	23.0	20.5	21.5	22.0	17.0	19.5	18.5	16.5	17.5
27	26.0	22.5	24.0	22.0	20.0	21.0	23.5	19.0	21.5	16.5	15.5	16.0
28	25.5	22.5	24.0	20.5	19.0	20.0	22.5	20.0	21.0	17.5	15.5	16.0
29	26.0	21.0	23.5	24.5	19.5	21.5	20.5	18.5	19.0	17.5	14.5	16.0
30	27.0	21.5	24.0	26.0	22.0	24.0	21.0	17.5	19.0	17.5	15.0	16.0
31	---	---	---	27.5	22.5	25.0	21.5	17.5	19.5	---	---	---
MONTH	27.0	14.5	19.8	30.0	19.0	24.0	27.5	17.0	21.1	24.5	14.5	19.4