

LEHIGH RIVER BASIN

01449360 POHOPOCO CREEK AT KRESGEVILLE, PA

LOCATION.--Lat 40°53'51", long 75°30'10", Monroe County, Hydrologic Unit 02040106, on right bank 20 ft downstream from bridge on U.S. Highway 209 at Kresgeville, 0.2 mi downstream from Middle Creek, and 13 mi upstream from mouth.

DRAINAGE AREA.--49.9 mi².

WATER-DISCHARGE RECORDS

PERIOD OF RECORD.--October 1966 to current year.

GAGE.--Water-stage recorder. Datum of gage is 659.72 ft above National Geodetic Vertical Datum of 1929.

REMARKS.--Records fair except those for estimated daily discharges, which are poor. Satellite and landline telemetry at station.

PEAK DISCHARGES FOR CURRENT YEAR.--Peak discharges greater than base discharge of 500 ft³/s and maximum (*):

Date	Time	Discharge ft ³ /s	Gage Height (ft)	Date	Time	Discharge ft ³ /s	Gage Height (ft)
June 7	0215	*356	*4.84	(No peaks above base discharge.)			

DISCHARGE, CUBIC FEET PER SECOND, WATER YEAR OCTOBER 2001 TO SEPTEMBER 2002
DAILY MEAN VALUES

DAY	OCT	NOV	DEC	JAN	FEB	MAR	APR	MAY	JUN	JUL	AUG	SEP
1	48	31	56	e36	56	41	121	204	105	52	25	24
2	45	30	40	36	56	41	102	249	95	50	25	28
3	42	30	35	35	51	102	99	249	89	48	24	23
4	40	30	33	35	50	71	93	216	86	47	24	21
5	39	32	32	35	49	64	86	194	84	46	24	19
6	40	31	31	35	49	63	84	172	120	44	25	19
7	38	30	32	40	49	63	79	158	273	44	23	18
8	36	30	32	35	48	62	77	144	141	43	23	18
9	34	29	54	35	47	61	76	148	122	42	22	17
10	35	29	44	35	48	74	88	136	112	42	21	16
11	34	29	39	40	65	64	77	117	105	39	21	16
12	33	28	37	41	52	62	74	133	102	38	20	17
13	33	28	39	39	50	61	74	163	99	36	20	17
14	32	28	43	36	46	60	79	200	126	36	19	17
15	48	28	47	36	47	58	263	157	120	36	19	26
16	37	28	41	36	48	59	189	147	102	34	19	67
17	36	26	42	35	48	56	160	139	92	33	20	30
18	34	25	63	34	46	69	142	284	87	32	19	24
19	32	25	54	32	45	70	132	255	84	32	18	23
20	32	26	51	34	46	96	124	221	78	33	24	22
21	32	25	50	33	52	116	114	199	74	31	21	21
22	32	25	48	32	47	101	109	176	71	30	e20	21
23	32	25	48	32	45	98	102	159	69	32	e20	24
24	32	25	57	37	44	96	94	146	66	41	26	21
25	32	37	49	46	44	90	98	133	65	33	31	20
26	32	47	47	43	44	98	95	125	62	32	21	21
27	32	31	45	42	46	176	85	117	61	31	19	63
28	31	27	43	42	43	128	206	135	64	32	18	78
29	30	25	43	43	---	124	273	189	57	31	43	43
30	31	42	39	45	---	118	218	121	53	28	31	35
31	31	---	e38	47	---	111	---	109	---	26	23	---
TOTAL	1095	882	1352	1162	1361	2553	3613	5295	2864	1154	708	809
MEAN	35.3	29.4	43.6	37.5	48.6	82.4	120	171	95.5	37.2	22.8	27.0
MAX	48	47	63	47	65	176	273	284	273	52	43	78
MIN	30	25	31	32	43	41	74	109	53	26	18	16
CFSM	0.71	0.59	0.87	0.75	0.97	1.65	2.41	3.42	1.91	0.75	0.46	0.54
IN.	0.82	0.66	1.01	0.87	1.01	1.90	2.69	3.95	2.14	0.86	0.53	0.60

STATISTICS OF MONTHLY MEAN DATA FOR WATER YEARS 1967 - 2002, BY WATER YEAR (WY)

MEAN	62.6	90.3	124	113	116	157	158	126	94.0	64.2	49.8	52.4
MAX	181	203	354	323	191	330	369	270	248	165	193	264
(WY)	1977	1973	1997	1979	1998	1977	1983	1989	1972	1969	1969	1987
MIN	18.9	24.7	18.1	13.9	45.0	60.2	47.9	56.9	35.9	18.2	14.0	15.5
(WY)	1981	1981	1999	1981	1980	1985	1985	1995	1999	1999	1999	1980

e Estimated.

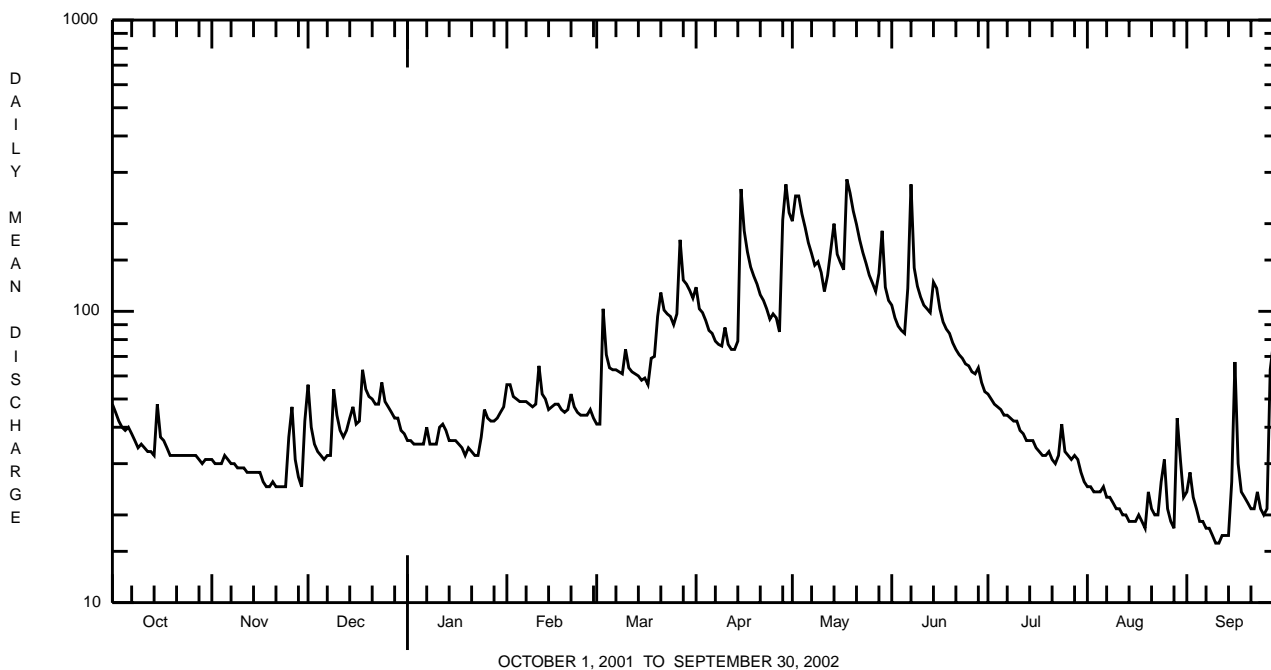
LEHIGH RIVER BASIN

01449360 POHOPOCO CREEK AT KRESGEVILLE, PA--Continued

SUMMARY STATISTICS	FOR 2001 CALENDAR YEAR		FOR 2002 WATER YEAR		WATER YEARS 1967 - 2002	
ANNUAL TOTAL	22904		22848			
ANNUAL MEAN	62.8		62.6		100	
HIGHEST ANNUAL MEAN					149	1978
LOWEST ANNUAL MEAN					46.5	1985
HIGHEST DAILY MEAN	282	Mar 30	284	May 18	1550	Apr 16 1983
LOWEST DAILY MEAN	17	Sep 8 ^a	16	Sep 10,11	9.9	Aug 7 1999
ANNUAL SEVEN-DAY MINIMUM	18	Sep 7	17	Sep 8	11	Aug 2 1999
MAXIMUM PEAK FLOW			356	Jun 7	b 2080	Jul 29 1969
MAXIMUM PEAK STAGE			4.84	Jun 7	9.21	Jul 29 1969
ANNUAL RUNOFF (CFSM)	1.26		1.25		2.01	
ANNUAL RUNOFF (INCHES)	17.07		17.03		27.35	
10 PERCENT EXCEEDS	129		132		198	
50 PERCENT EXCEEDS	48		43		72	
90 PERCENT EXCEEDS	25		23		27	

^a Also, Sept. 9, 13, 18, 19.

^b From rating curve extended above 800 ft³/s.



LEHIGH RIVER BASIN

01449360 POHOPOCO CREEK AT KRESGEVILLE, PA--Continued

WATER-QUALITY RECORDS

PERIOD OF DAILY RECORD.--

WATER TEMPERATURE: Water years 1969 to current year.

INSTRUMENTATION.--Temperature probe interfaced with a data collection platform since water year 1986.

REMARKS.--Water temperature records rated good.

EXTREMES FOR PERIOD OF DAILY RECORD.--

WATER TEMPERATURE: Maximum, 31.5°C, July 25, 1970; minimum, 0.0°C, many days during winters.

EXTREMES FOR CURRENT YEAR.--

WATER TEMPERATURE: Maximum, 24.0°C, July 23, Aug. 4; minimum, 0.0°C, many days during winter.

WATER TEMPERATURE, DEGREES CELSIUS, WATER YEAR OCTOBER 2001 TO SEPTEMBER 2002

DAY	MAX	MIN	MEAN	MAX	MIN	MEAN	MAX	MIN	MEAN	MAX	MIN	MEAN
	OCTOBER			NOVEMBER			DECEMBER			JANUARY		
1	12.5	11.0	12.0	9.0	6.5	8.0	11.5	9.5	11.0	0.5	0.0	0.0
2	13.5	11.5	12.5	11.5	8.5	10.0	9.5	7.0	8.0	0.5	0.0	0.5
3	14.5	12.5	13.5	13.0	11.0	12.0	7.0	5.5	6.0	0.5	0.0	0.5
4	15.0	13.5	14.5	11.0	9.0	10.0	7.0	5.0	6.0	1.0	0.5	0.5
5	14.5	13.0	14.0	9.5	7.0	8.0	9.5	7.0	8.0	1.5	0.5	1.0
6	14.5	12.5	14.0	8.0	6.5	7.0	9.5	8.0	9.0	1.5	0.0	1.0
7	12.5	9.5	11.0	9.0	6.5	7.5	9.5	8.0	9.0	1.5	0.0	0.5
8	9.5	8.0	9.0	9.0	7.0	8.0	8.0	4.5	6.0	1.5	0.5	1.0
9	9.0	7.0	8.0	8.5	7.0	8.0	5.5	4.5	5.0	2.0	1.0	1.5
10	10.0	7.5	9.0	7.5	6.0	6.5	5.0	3.5	4.0	3.0	1.5	2.5
11	11.5	9.0	10.5	6.5	5.0	6.0	6.0	4.5	5.0	3.5	3.0	3.0
12	13.0	11.0	12.0	5.5	4.0	4.5	5.0	3.5	4.5	4.0	3.0	3.5
13	14.5	12.5	13.5	5.0	3.0	4.0	7.0	5.0	6.0	3.5	3.0	3.0
14	15.0	14.0	14.5	5.5	3.5	4.5	8.0	7.0	7.5	3.5	2.0	3.0
15	14.5	12.5	14.0	8.0	5.0	6.5	8.0	5.0	7.0	4.0	3.0	3.5
16	12.5	10.5	11.5	9.5	7.0	8.0	5.0	3.5	4.5	4.0	3.0	3.5
17	11.5	10.0	11.0	8.5	6.5	7.5	6.0	5.0	5.5	3.5	2.5	3.0
18	10.0	8.0	9.0	7.0	5.0	6.0	7.0	6.0	6.5	3.0	1.5	2.0
19	9.5	7.5	8.5	7.0	6.0	6.5	6.5	5.5	6.0	1.5	0.0	0.5
20	11.0	8.5	9.5	7.0	5.5	6.5	5.5	4.5	5.0	1.0	0.0	0.5
21	11.5	9.0	10.5	5.5	3.5	4.5	4.5	3.5	4.0	1.5	0.5	1.0
22	12.5	11.0	12.0	5.0	3.5	4.0	3.5	2.5	3.0	3.0	1.5	2.0
23	13.0	11.5	12.5	5.5	4.0	4.5	4.0	2.0	3.0	3.5	1.5	2.5
24	15.5	13.0	14.0	8.5	5.0	6.5	5.0	3.5	4.5	4.5	3.5	4.0
25	14.5	12.5	13.5	11.0	8.5	10.0	3.5	2.0	2.5	4.5	3.0	4.0
26	12.5	9.0	11.0	10.0	8.5	9.5	2.5	1.0	2.0	4.0	2.0	3.0
27	9.0	8.0	8.5	8.5	7.0	8.0	1.0	0.5	1.0	4.5	2.0	3.0
28	8.0	6.5	7.5	10.0	8.0	9.0	1.5	0.5	1.0	4.5	2.5	3.5
29	8.0	5.5	6.5	10.0	9.5	9.5	1.5	0.5	1.0	6.0	3.5	4.5
30	9.0	7.0	8.0	11.5	9.5	10.0	1.0	0.0	0.5	7.0	5.5	6.5
31	8.0	7.0	7.5	---	---	---	0.5	0.0	0.0	6.5	4.5	5.0
MONTH	15.5	5.5	11.1	13.0	3.0	7.3	11.5	0.0	4.9	7.0	0.0	2.4

