

**GROUND-WATER DATA COLLECTED AT SPECIAL-STUDY SITES
DELAWARE RIVER BASIN NAWQA PROJECT**

The National Water-Quality Assessment (NAWQA) Program of the U.S. Geological Survey is a long-term program with goals to describe the status and trends of water-quality conditions for a large, representative part of the Nation's ground- and surface-water resources; provide an improved understanding of the primary natural and human factors affecting these observed conditions and trends; and provide information that supports development and evaluation of management, regulatory, and monitoring decisions by other agencies.

Assessment activities are being conducted in 53 study units (major watersheds and aquifer systems) that represent a wide range of environmental settings nationwide and that account for a large percentage of the Nation's water use. A wide array of chemical constituents will be measured in ground water, surface water, streambed sediments, and fish tissues. The coordinated application of comparative hydrologic studies at a wide range of spatial and temporal scales will provide information for decision making by water-resources managers and a foundation for aggregation and comparison of findings to address water-quality issues of regional and national interest.

NAWQA study units are divided into three groups that are studied intensively on a rotational basis. Three NAWQA studies have been active in the state of Pennsylvania. The Lower Susquehanna (LSUS) study unit conducted intensive sampling from 1993 through 1995 and is currently in a low-intensity phase. The Allegheny and Monongahela River Basins (ALMN) study unit conducted intensive sampling from 1996 through 1998 and is currently in a low-intensity phase. The Delaware River Basin (DELR) study unit conducted intensive sampling from 1999 to 2001, and currently is in a low-intensity phase. The DELR is scheduled to resume intensive sampling in 2009.

Communication and coordination between USGS personnel and other local, State, and federal interests are critical components of the NAWQA Program. Each study unit has a local liaison committee consisting of representatives from key federal, State, and local water resources agencies, Indian nations, and universities in the study unit. Liaison committees typically meet semiannually to discuss their information needs, monitoring plans and progress, desired information products, and opportunities to collaborate efforts among the agencies. Additional information about the NAWQA Program is available through the World Wide Web at <http://water.usgs.gov/nawqa/>

DELR NAWQA fixed stations (fig. 6-7) are: Delaware River at Trenton, NJ (01463500); Little Neshaminy Creek near Warminster, PA (01464907); French Creek near Phoenixville, PA (01472157); and Schuylkill River at Philadelphia, PA (01474500). Data from Pennsylvania fixed stations are published in the continuous-record section of this report. DELR NAWQA low-intensity phase ground-water sample locations are shown on figure 13. Data from the ground-water sample locations are published in the analyses of ground-water samples collected at special-study sites section of this report. A complete list of DELR NAWQA data, including water-quality results from all synoptic and fixed sampling sites, can be found in 'Water Resources Data, New Jersey, Water Year 2003', Water-Data Report NJ-03-3.

**GROUND WATER IN THE CLASTIC BEDROCK WITHIN THE TRIASSIC LOWLANDS SECTION
OF THE PIEDMONT PHYSIOGRAPHIC PROVINCE**

The following table contains site, water-level, and water-quality data from a network of five domestic wells. The wells are a subset from a network of 30 wells that were established and sampled in 1999 as part of the National Water-Quality Assessment Program in the Delaware River Basin.

The five wells were re-sampled in 2003 to assess the status and trends of ground-water quality in the clastic bedrock of the Piedmont Physiographic Province (fig. 13). Samples were tested for field parameters, nutrients, major ions, trace elements, dissolved and volatile organic compounds (VOCs), pesticides (including their metabolites), and radioisotopes. Many VOCs and pesticides constituents were not detected at any of the five wells. Data collected during the initial sampling of all 30 wells in 1999 for this network can be found in the annual 'Water Resources Data, Pennsylvania, Water Year 2000', Water Data Report PA-00-1. For additional information, contact Doug Chichester at the U.S. Geological Survey, 215 Limekiln Road, New Cumberland, PA 17070; 717-730-6951 (email: dchiche@usgs.gov).

GROUND-WATER DATA COLLECTED AT SPECIAL-STUDY SITES
 DELAWARE RIVER BASIN NAWQA PROJECT

GROUND WATER IN THE CLASTIC BEDROCK WITHIN THE TRIASSIC LOWLANDS SECTION
 OF THE PIEDMONT PHYSIOGRAPHIC PROVINCE

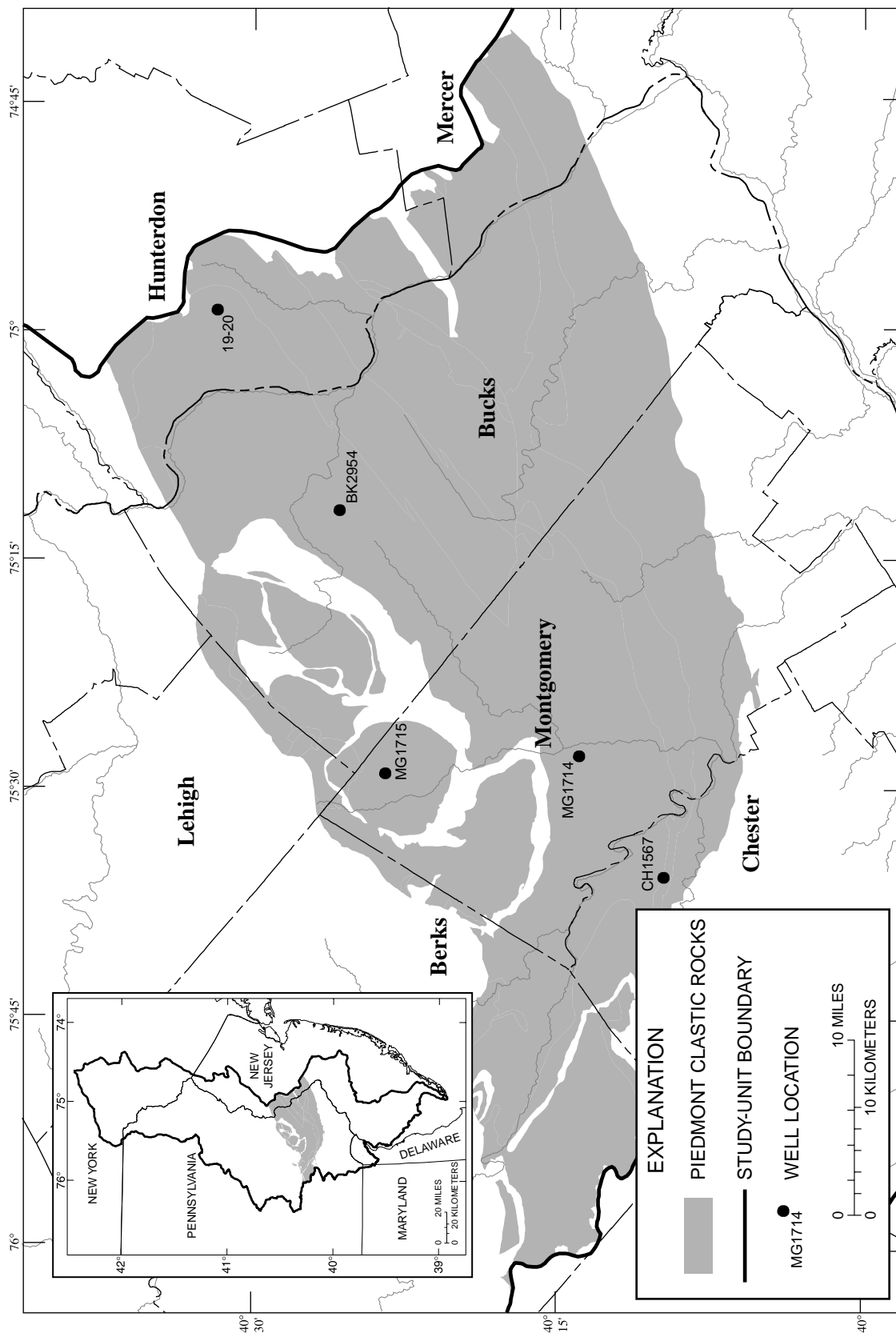


Figure 13.--Location of Delaware River Basin National Water-Quality Assessment Program low-intensity phase ground-water sampling sites in the Clastic Bedrock within the Triassic Lowlands Section of the Piedmont Physiographic Province.

**GROUND-WATER DATA COLLECTED AT SPECIAL-STUDY SITES
DELAWARE RIVER BASIN NAWQA PROJECT**

REMARKS.--Explanation of column headings--Station number = 15-digit unique identifier based on site latitude (first six digits), longitude (digits seven through thirteen), and a 2-digit sequence number suffix; Altitude of land surface = land surface at well site in feet above sea level; Sampling method code 4040 = submersible pump; $\mu\text{S}/\text{cm}$ = microsiemens per centimeter at 25 degrees Celsius; deg C = degrees Celsius; $\mu\text{g}/\text{L}$ = micrograms per liter (parts per billion); mg/L = milligrams per liter (parts per million); pCi/L = picocuries per liter; "<" = less than; "E" = estimated; "M" = presence of material verified but not quantified; CIAT = deethylatrazine; DCPA = dacthal; GF = Glass fiber filter.

WATER-QUALITY DATA, WATER YEAR OCTOBER 2002 TO SEPTEMBER 2003

Local ID	Station number	Date	Time	Agency collecting sample, code (00027)	Agency analyzing sample, code (00028)	Depth of well, feet below LSD (72008)	Depth to water level, feet below LSD (72019)	Altitude of land surface, feet (72000)	Flow rate, gal/min (00059)	Pump or flow period prior to sampling, minutes (72004)			
BUCKS COUNTY, PA													
BK 2954	402555075114701	07-29-03	1100	1028	80020	92	53.23	370	3.5	42			
CHESTER COUNTY, PA													
CH 1567	400954075354501	07-23-03	1200	1028	80020	105	17.51	340	6.4	65			
MONTGOMERY COUNTY, PA													
MG 1714	401405075275101	07-28-03	1100	1028	80020	210	66.83	200	7.7	60			
MG 1715	402337075290001	07-30-03	1200	1028	80020	200	16.34	325	3.8	95			
HUNTERDON COUNTY, NJ													
190020	403156074583901	07-24-03	1300	1028	80020	275	15.13	525	4.8	110			
Date	Sampling method, code (82398)	Turbidity, water, unfltrd field, NTU (61028)	Barometric pressure, mm Hg (00025)	Dissolved oxygen, mg/L (00300)	Dissolved oxygen, percent of saturation (00301)	pH, water, unfltrd std units (00400)	pH, water, unfltrd lab, std units (00403)	Specif. conductance, wat unfltrd lab, $\mu\text{S}/\text{cm}$ 25 degC (90095)	Specif. conductance, wat unfltrd lab, $\mu\text{S}/\text{cm}$ 25 degC (00095)	Temperature, air, deg C (00020)	Temperature, water, deg C (00010)	Hardness, water, unfltrd mg/L as CaCO_3 (00900)	Noncarbohardness, wat flt field, mg/L as CaCO_3 (00904)
BUCKS COUNTY, PA													
07-29-03	4040	.4	750	6.1	59	7.5	7.5	258	268	23.5	13.6	120	27
CHESTER COUNTY, PA													
07-23-03	4040	.1	748	5.1	53	7.1	6.7	404	410	26.0	15.8	180	82
MONTGOMERY COUNTY, PA													
07-28-03	4040	.1	747	6.0	60	7.8	7.5	394	370	30.0	14.5	200	25
07-30-03	4040	.4	755	3.1	30	7.6	7.6	456	482	28.0	13.6	250	54
HUNTERDON COUNTY, NJ													
07-24-03	4040	.0	745	3.2	35	8.2	7.9	274	269	32.0	17.6	120	13
Date	Calcium water, fltrd, mg/L (00915)	Magnesium, water, fltrd, mg/L (00925)	Potassium, water, fltrd, mg/L (00935)	Sodium adsorption ratio (00931)	Sodium, water, fltrd, mg/L (00930)	Sodium, percent (00932)	Alkalinity, wat flt inc tit field, mg/L as CaCO_3 (39086)	Bromide water, fltrd, mg/L (71870)	Chloride, water, fltrd, mg/L (00940)	Fluoride, water, fltrd, mg/L (00950)	Silica, water, fltrd, mg/L (00955)	Sulfate, water, fltrd, mg/L (00945)	Residue water, fltrd, sum of constituents, mg/L (70301)
BUCKS COUNTY, PA													
07-29-03	23.8	14.0	.77	.4	9.13	14	91	.02	9.51	<.2	15.6	13.3	164
CHESTER COUNTY, PA													
07-23-03	59.0	9.03	.95	.4	12.4	13	103	.08	47.4	<.2	23.3	12.5	245
MONTGOMERY COUNTY, PA													
07-28-03	40.9	22.8	.85	.3	11.2	11	172	.04	10.6	<.2	24.2	18.9	247
07-30-03	55.7	27.1	.93	.3	11.0	9	198	.03	13.9	<.2	23.5	16.5	297
HUNTERDON COUNTY, NJ													
07-24-03	26.3	13.1	.63	.5	11.8	18	109	.02	6.71	<.2	22.1	11.6	175

**GROUND-WATER DATA COLLECTED AT SPECIAL-STUDY SITES
DELAWARE RIVER BASIN NAWQA PROJECT**

WATER-QUALITY DATA, WATER YEAR OCTOBER 2002 TO SEPTEMBER 2003

Date	Residue water, fltrd, tons/acre-ft (70303)	Residue on evap. at 180degC wat flt mg/L (70300)	Ammonia + org-N, fltrd, mg/L as N (00623)	Ammonia water, fltrd, mg/L as N (00608)	Nitrite + nitrate water, fltrd, mg/L as N (00631)	Nitrite water, fltrd, mg/L as N (00613)	Ortho-phosphate water, fltrd, mg/L (00660)	Ortho-phosphate water, fltrd, mg/L as P (00671)	Aluminum, water, fltrd, mg/L (01106)	Anti-mony, water, fltrd, mg/L (01095)	Arsenic water, fltrd, mg/L (01000)	Barium, water, fltrd, mg/L (01005)	Beryllium, water, fltrd, mg/L (01010)
BUCKS COUNTY, PA													
07-29-03	.21	156	E.08	<.04	5.10	<.008	.110	.04	<2	<.30	1.5	245	<.06
CHESTER COUNTY, PA													
07-23-03	.34	252	<.10	<.04	4.12	<.008	.187	.06	M	<.30	1.0	381	<.06
MONTGOMERY COUNTY, PA													
07-28-03	.33	245	<.10	<.04	3.06	<.008	--	E.01	<2	<.30	14.8	198	<.06
07-30-03	.40	293	<.10	<.04	6.55	<.008	--	E.01	<2	<.30	4.1	350	<.06
HUNTERDON COUNTY, NJ													
07-24-03	.23	172	<.10	<.04	3.46	<.008	.098	.03	<2	<.30	25.2	85	<.06
Date	Boron, water, fltrd, µg/L (01020)	Cadmium water, fltrd, µg/L (01025)	Chromium, water, fltrd, µg/L (01030)	Cobalt water, fltrd, µg/L (01035)	Copper, water, fltrd, µg/L (01040)	Iron, water, fltrd, µg/L (01046)	Lead, water, fltrd, µg/L (01049)	Lithium water, fltrd, µg/L (01130)	Manganese, water, fltrd, µg/L (01056)	Molybdenum, water, fltrd, µg/L (01060)	Nickel, water, fltrd, µg/L (01065)	Selenium, water, fltrd, µg/L (01145)	Silver, water, fltrd, µg/L (01075)
BUCKS COUNTY, PA													
07-29-03	22	E.02	<.8	.055	1.1	E4	E.07	8.5	.3	1.4	.71	.9	<.2
CHESTER COUNTY, PA													
07-23-03	10	<.04	<.8	.145	13.4	<8	2.06	12.4	.8	<.3	2.51	E.3	<.2
MONTGOMERY COUNTY, PA													
07-28-03	31	E.02	<.8	.074	2.5	<8	3.11	11.4	<.2	8.6	1.22	E.3	<.2
07-30-03	32	<.04	<.8	.106	2.1	<8	.66	18.8	<.2	1.0	.71	1.0	<.2
HUNTERDON COUNTY, NJ													
07-24-03	224	E.02	E.5	.060	1.2	<8	.79	10.3	<.2	2.5	.40	.7	<.2
Date	Strontium, water, fltrd, µg/L (01080)	Thallium, water, fltrd, µg/L (01057)	Vanadium, water, fltrd, µg/L (01085)	Zinc, water, fltrd, µg/L (01090)	2,6-Di-ethyl-aniline water, fltrd, 0.7µ GF µg/L (82660)	CIAT, water, fltrd, µg/L (04040)	Aceto-chlor, water, fltrd, µg/L (49260)	Ala-chlor, water, fltrd, µg/L (46342)	alpha-HCH, water, fltrd, µg/L (34253)	Atra-zine, water, fltrd, µg/L (39632)	Azin-phos-methyl, water, fltrd, 0.7µ GF µg/L (82686)	Ben-flur-alin, water, fltrd, 0.7µ GF µg/L (82673)	
BUCKS COUNTY, PA													
07-29-03	200	<.04	.9	13	<.006	E.006	<.006	<.004	<.005	.009	<.050	<.010	
CHESTER COUNTY, PA													
07-23-03	167	<.04	.8	3	<.006	<.006	<.006	<.004	<.005	<.007	<.050	<.010	
MONTGOMERY COUNTY, PA													
07-28-03	978	<.04	4.7	M	<.006	E.005	<.006	<.004	<.005	<.007	<.050	<.010	
07-30-03	558	<.04	2.1	M	<.006	E.014	<.006	<.004	<.005	.014	<.050	<.010	
HUNTERDON COUNTY, NJ													
07-24-03	2050	<.04	7.3	27	<.006	<.006	<.006	<.004	<.005	<.007	<.050	<.010	

**GROUND-WATER DATA COLLECTED AT SPECIAL-STUDY SITES
DELAWARE RIVER BASIN NAWQA PROJECT**

WATER-QUALITY DATA, WATER YEAR OCTOBER 2002 TO SEPTEMBER 2003

Date	Butyl- ate, water, fltrd, µg/L (04028)	Car- baryl, water, fltrd 0.7µ GF µg/L (82680)	Carbo- furan, water, fltrd 0.7µ GF µg/L (82674)	Chlor- pyrifos water, fltrd, µg/L (38933)	cis- Per- methrin water, fltrd 0.7µ GF µg/L (82687)	Cyana- zine, water, fltrd, µg/L (04041)	DCPA, water, fltrd 0.7µ GF µg/L (82682)	Desulf- inyl fipro- nil, water, fltrd, µg/L (62170)	Diazi- non, water, fltrd, µg/L (39572)	Diel- drin, water, fltrd, µg/L (39381)	Disul- foton, water, fltrd 0.7µ GF µg/L (82677)	EPTC, water, fltrd 0.7µ GF µg/L (82668)	
BUCKS COUNTY, PA													
07-29-03	<.002	<.041	<.020	<.005	<.006	<.018	<.003	<.004	<.005	<.005	<.02	<.002	
CHESTER COUNTY, PA													
07-23-03	<.002	<.041	<.020	<.005	<.006	<.018	<.003	<.004	<.005	<.005	<.02	<.002	
MONTGOMERY COUNTY, PA													
07-28-03	<.002	<.041	<.020	<.005	<.006	<.018	<.003	<.004	<.005	<.005	<.02	<.002	
07-30-03	<.002	<.041	<.020	<.005	<.006	<.018	<.003	<.004	<.005	<.005	<.02	<.002	
HUNTERDON COUNTY, NJ													
07-24-03	<.002	<.041	<.020	<.005	<.006	<.018	<.003	<.004	<.005	<.005	<.02	<.002	
Date	Ethal- flur- alin, water, fltrd 0.7µ GF µg/L (82663)	Etho- prop, water, fltrd 0.7µ GF µg/L (82672)	Desulf- inyl- fipro- nil amide, wat flt µg/L (62169)	Fipro- nil sulfide water, fltrd, µg/L (62167)	Fipro- nil sulfone water, fltrd, µg/L (62168)	Fipro- nil, water, fltrd, µg/L (62166)	Fonofos water, fltrd, µg/L (04095)	Lindane water, fltrd, µg/L (39341)	Linuron water, fltrd 0.7µ GF µg/L (82666)	Mala- thion, water, fltrd, µg/L (39532)	Methyl para- thion, water, fltrd 0.7µ GF µg/L (82667)	Metola- chlor, water, fltrd, µg/L (39415)	Metri- buzin, water, fltrd, µg/L (82630)
BUCKS COUNTY, PA													
07-29-03	<.009	<.005	<.009	<.005	<.005	<.007	<.003	<.004	<.035	<.027	<.006	E.004	<.006
CHESTER COUNTY, PA													
07-23-03	<.009	<.005	<.009	<.005	<.005	<.007	<.003	<.004	<.035	<.027	<.006	<.013	<.006
MONTGOMERY COUNTY, PA													
07-28-03	<.009	<.005	<.009	<.005	<.005	<.007	<.003	<.004	<.035	<.027	<.006	<.013	<.006
07-30-03	<.009	<.005	<.009	<.005	<.005	<.007	<.003	<.004	<.035	<.027	<.006	<.013	<.006
HUNTERDON COUNTY, NJ													
07-24-03	<.009	<.005	<.009	<.005	<.005	<.007	<.003	<.004	<.035	<.027	<.006	<.013	<.006
Date	Moli- nate, water, fltrd 0.7µ GF µg/L (82671)	Naprop- amide, water, fltrd 0.7µ GF µg/L (82684)	p,p'- DDE, water, fltrd, µg/L (34653)	Para- thion, water, fltrd, µg/L (39542)	Peb- ulate, water, fltrd 0.7µ GF µg/L (82669)	Pendi- meth- alin, water, fltrd 0.7µ GF µg/L (82683)	Phorate water, fltrd 0.7µ GF µg/L (82664)	Prome- ton, water, fltrd, µg/L (04037)	Pron- amide, water, fltrd 0.7µ GF µg/L (82676)	Propa- chlor, water, fltrd, µg/L (04024)	Pro- panil, water, fltrd 0.7µ GF µg/L (82679)	Prepar- gite, water, fltrd 0.7µ GF µg/L (82685)	Sima- zine, water, fltrd, µg/L (04035)
BUCKS COUNTY, PA													
07-29-03	<.002	<.007	<.003	<.010	<.004	<.022	<.011	E.01	<.004	<.010	<.011	<.02	.147
CHESTER COUNTY, PA													
07-23-03	<.002	<.007	<.003	<.010	<.004	<.022	<.011	<.01	<.004	<.010	<.011	<.02	<.005
MONTGOMERY COUNTY, PA													
07-28-03	<.002	<.007	<.003	<.010	<.004	<.022	<.011	<.01	<.004	<.010	<.011	<.02	<.005
07-30-03	<.002	<.007	<.003	<.010	<.004	<.022	<.011	<.01	<.004	<.010	<.011	<.02	<.005
HUNTERDON COUNTY, NJ													
07-24-03	<.002	<.007	<.003	<.010	<.004	<.022	<.011	<.01	<.004	<.010	<.011	<.02	<.005

**GROUND-WATER DATA COLLECTED AT SPECIAL-STUDY SITES
DELAWARE RIVER BASIN NAWQA PROJECT**

WATER-QUALITY DATA, WATER YEAR OCTOBER 2002 TO SEPTEMBER 2003

Date	Tebu- thiuron water, fltrd 0.7µ GF µg/L (82670)	Terba- cil, water, fltrd 0.7µ GF µg/L (82665)	Terbu- fos, water, fltrd 0.7µ GF µg/L (82675)	Thio- bencarb water, fltrd 0.7µ GF µg/L (82681)	Tri- allate, water, fltrd 0.7µ GF µg/L (82678)	Tri- flur- alin, water, fltrd 0.7µ GF µg/L (82661)	1,1,1,2 -Tetra- chloro- ethane, water, unfltrd µg/L (77562)	1,1,1- Tri- chloro- ethane, water, unfltrd µg/L (34506)	1,1,2,2 -Tetra- chloro- ethane, water, unfltrd µg/L (34516)	CFC-113 water, unfltrd µg/L (77652)	1,1,2- Tri- chloro- ethane, water, unfltrd µg/L (34511)	1,1-Di- chloro- ethane, water, unfltrd µg/L (34496)	1,1-Di- chloro- ethene, water, unfltrd µg/L (34501)
BUCKS COUNTY, PA													
07-29-03	<.02	<.034	<.02	<.005	<.002	<.009	<.03	<.03	<.09	<.06	<.06	<.04	<.04
CHESTER COUNTY, PA													
07-23-03	<.02	<.034	<.02	<.005	<.002	<.009	<.03	E.02	<.09	<.06	<.06	<.04	<.04
MONTGOMERY COUNTY, PA													
07-28-03	<.02	<.034	<.02	<.005	<.002	<.009	<.03	<.03	<.09	<.06	<.06	<.04	<.04
07-30-03	<.02	<.034	<.02	<.005	<.002	<.009	<.03	.21	<.09	<.06	<.06	<.04	.10
HUNTERDON COUNTY, NJ													
07-24-03	<.02	<.034	<.02	<.005	<.002	<.009	<.03	<.03	<.09	<.06	<.06	<.04	<.04
Date	1,1-Di- chloro- propene water unfltrd µg/L (77168)	1,2,3,4 Tetra- methyl- benzene water unfltrd µg/L (49999)	1,2,3,5 Tetra- methyl- benzene water unfltrd µg/L (50000)	1,2,3- Tri- chloro- benzene water unfltrd µg/L (77613)	1,2,3- Tri- chloro- propane water unfltrd µg/L (77443)	1,2,3- Tri- methyl- benzene water unfltrd µg/L (77221)	1,2,4- Tri- chloro- benzene water unfltrd µg/L (34551)	1,2,4- Tri- methyl- benzene water unfltrd µg/L (77222)	Dibromo chloro- propane water unfltrd µg/L (82625)	1,2-Di- bromo- ethane, water unfltrd µg/L (77651)	1,2-Di- chloro- benzene water unfltrd µg/L (34536)	1,2-Di- chloro- ethane, water, unfltrd µg/L (32103)	
BUCKS COUNTY, PA													
07-29-03	<.05	<.2	<.2	<.3	<.16	<.1	<.1	<.06	<.5	<.04	<.03	<.1	
CHESTER COUNTY, PA													
07-23-03	<.05	<.2	<.2	<.3	<.16	<.1	<.1	<.06	<.5	<.04	<.03	<.1	
MONTGOMERY COUNTY, PA													
07-28-03	<.05	<.2	<.2	<.3	<.16	<.1	<.1	<.06	<.5	<.04	<.03	<.1	
07-30-03	<.05	<.2	<.2	<.3	<.16	<.1	<.1	<.06	<.5	<.04	<.03	<.1	
HUNTERDON COUNTY, NJ													
07-24-03	<.05	<.2	<.2	<.3	<.16	<.1	<.1	<.06	<.5	<.04	<.03	<.1	
Date	1,2-Di- chloro- propane water unfltrd µg/L (34541)	1,3,5- Tri- methyl- benzene water unfltrd µg/L (77226)	1,3-Di- chloro- benzene water unfltrd µg/L (34566)	1,3-Di- chloro- propane water unfltrd µg/L (77173)	1,4-Di- chloro- benzene water unfltrd µg/L (34571)	2,2-Di- chloro- propane water unfltrd µg/L (77170)	2- Chloro- toluene water unfltrd µg/L (77275)	2- Ethyl- toluene water unfltrd µg/L (77220)	3- Chloro- propene water unfltrd µg/L (78109)	4- Chloro- toluene water unfltrd µg/L (77277)	4-Iso- propyl- toluene water unfltrd µg/L (77356)	Acetone water unfltrd µg/L (81552)	
BUCKS COUNTY, PA													
07-29-03	<.03	<.04	<.03	<.1	<.05	<.05	<.04	<.06	<.12	<.05	<.12	<.7	
CHESTER COUNTY, PA													
07-23-03	<.03	<.04	<.03	<.1	<.05	<.05	<.04	<.06	<.12	<.05	<.12	<.7	
MONTGOMERY COUNTY, PA													
07-28-03	<.03	<.04	<.03	<.1	<.05	<.05	<.04	<.06	<.12	<.05	<.12	<.7	
07-30-03	<.03	<.04	<.03	<.1	<.05	<.05	<.04	<.06	<.12	<.05	<.12	<.7	
HUNTERDON COUNTY, NJ													
07-24-03	<.03	<.04	<.03	<.1	<.05	<.05	<.04	<.06	<.12	<.05	<.12	<.7	

**GROUND-WATER DATA COLLECTED AT SPECIAL-STUDY SITES
DELAWARE RIVER BASIN NAWQA PROJECT**

WATER-QUALITY DATA, WATER YEAR OCTOBER 2002 TO SEPTEMBER 2003

Date	Acrylonitrile water unfltrd µg/L (34215)	Benzene water unfltrd µg/L (34030)	Bromobenzene water unfltrd µg/L (81555)	Bromo-chloro-methane water unfltrd µg/L (77297)	Bromo-di-chloro-methane water unfltrd µg/L (32101)	Bromo-ethene, water, unfltrd µg/L (50002)	Bromo-methane water unfltrd µg/L (34413)	Carbon di-sulfide water unfltrd µg/L (77041)	Chloro-benzene water unfltrd µg/L (34301)	Chloro-ethane, water, unfltrd µg/L (34311)	Chloro-methane water unfltrd µg/L (34418)	cis-1,2-Di-chloro-ethene, water, unfltrd µg/L (77093)	cis-1,3-Di-chloro-propene water unfltrd µg/L (34704)
BUCKS COUNTY, PA													
07-29-03	<1	<.04	<.04	<.12	<.05	<.1	<.3	<.07	<.03	<.1	<.2	<.04	<.09
CHESTER COUNTY, PA													
07-23-03	<1	<.04	<.04	<.12	<.05	<.1	<.3	<.07	<.03	<.1	<.2	<.04	<.09
MONTGOMERY COUNTY, PA													
07-28-03	<1	<.04	<.04	<.12	<.05	<.1	<.3	<.07	<.03	<.1	<.2	<.04	<.09
07-30-03	<1	<.04	<.04	<.12	<.05	<.1	<.3	<.07	<.03	<.1	<.2	<.04	<.09
HUNTERDON COUNTY, NJ													
07-24-03	<1	<.04	<.04	<.12	<.05	<.1	<.3	<.07	<.03	<.1	<.2	<.04	<.09
Date	Di-bromo-chloro-methane water unfltrd µg/L (32105)	Di-bromo-methane water unfltrd µg/L (30217)	Di-chloro-di-fluoro-methane wat unfltrd µg/L (34668)	Di-chloro-methane water unfltrd µg/L (34423)	Di-ethyl ether, water, unfltrd µg/L (81576)	Diiso-propyl ether, water, unfltrd µg/L (81577)	Ethyl methacrylate, water, unfltrd µg/L (73570)	Ethyl methyl ketone, water, unfltrd µg/L (81595)	Ethyl-benzene water unfltrd µg/L (34371)	Hexa-chloro-buta-diene, water, unfltrd µg/L (39702)	Hexa-chloro-ethane, water, unfltrd µg/L (34396)	Iodo-methane water unfltrd µg/L (77424)	Iso-butyl methyl ketone, water, unfltrd µg/L (78133)
BUCKS COUNTY, PA													
07-29-03	<.2	<.05	<.18	<.2	<.2	<.10	<.2	<5.0	<.03	<.1	<.2	<.35	<.4
CHESTER COUNTY, PA													
07-23-03	<.2	<.05	<.18	<.2	<.2	<.10	<.2	<5.0	<.03	<.1	<.2	<.35	<.4
MONTGOMERY COUNTY, PA													
07-28-03	<.2	<.05	<.18	<.2	<.2	<.10	<.2	<5.0	<.03	<.1	<.2	<.35	<.4
07-30-03	<.2	<.05	<.18	<.2	<.2	<.10	<.2	<5.0	<.03	<.1	<.2	<.35	<.4
HUNTERDON COUNTY, NJ													
07-24-03	<.2	<.05	<.18	<.2	<.2	<.10	<.2	<5.0	<.03	<.1	<.2	<.35	<.4
Date	Iso-propyl-benzene water unfltrd µg/L (77223)	Methyl acrylonitrile water unfltrd µg/L (81593)	Methyl acrylate, water, unfltrd µg/L (49991)	Methyl methacrylate, water, unfltrd µg/L (81597)	Methyl tert-pentyl ether, water, unfltrd µg/L (50005)	meta-para-Xylene, water, unfltrd µg/L (85795)	Naphthalene, water, unfltrd µg/L (34696)	Methyl n-butyl ketone, water, unfltrd µg/L (77103)	n-Butyl benzene water unfltrd µg/L (77342)	n-propyl-benzene water unfltrd µg/L (77224)	o-Xylene, water, unfltrd µg/L (77135)	sec-Butyl-benzene water unfltrd µg/L (77350)	Styrene water unfltrd µg/L (77128)
BUCKS COUNTY, PA													
07-29-03	<.06	<.6	<2.0	<.3	<.08	<.06	<.5	<.7	<.2	<.04	<.07	<.06	<.04
CHESTER COUNTY, PA													
07-23-03	<.06	<.6	<2.0	<.3	<.08	<.06	<.5	<.7	<.2	<.04	<.07	<.06	<.04
MONTGOMERY COUNTY, PA													
07-28-03	<.06	<.6	<2.0	<.3	<.08	<.06	<.5	<.7	<.2	<.04	<.07	<.06	<.04
07-30-03	<.06	<.6	<2.0	<.3	<.08	<.06	<.5	<.7	<.2	<.04	<.07	<.06	<.04
HUNTERDON COUNTY, NJ													
07-24-03	<.06	<.6	<2.0	<.3	<.08	<.06	<.5	<.7	<.2	<.04	<.07	<.06	<.04

**GROUND-WATER DATA COLLECTED AT SPECIAL-STUDY SITES
DELAWARE RIVER BASIN NAWQA PROJECT**

WATER-QUALITY DATA, WATER YEAR OCTOBER 2002 TO SEPTEMBER 2003

Date	t-Butyl ethyl ether, water, unfltrd µg/L (50004)	Methyl t-butyl ether, water, unfltrd µg/L (78032)	tert- Butyl- benzene water, unfltrd µg/L (77353)	Tetra- chloro- ethene, water, unfltrd µg/L (34475)	Tetra- chloro- methane water, unfltrd µg/L (32102)	Tetra- hydro- furan, water, unfltrd µg/L (81607)	Toluene water, unfltrd µg/L (34010)	trans- 1,2-Di- chloro- ethene, water, unfltrd µg/L (34546)	trans- 1,3-Di- chloro- propene water, unfltrd µg/L (34699)	trans- 1,4-Di- chloro- 2- butene, wat unf µg/L (73547)	Tri- bromo- methane water, unfltrd µg/L (32104)	Tri- chloro- ethene, water, unfltrd µg/L (39180)
BUCKS COUNTY, PA												
07-29-03	<.05	E.1	<.10	<.03	<.06	<2	<.05	<.03	<.09	<.7	<.10	<.04
CHESTER COUNTY, PA												
07-23-03	<.05	.2	<.10	E.01	<.06	<2	<.05	<.03	<.09	<.7	<.10	E.07
MONTGOMERY COUNTY, PA												
07-28-03	<.05	<.2	<.10	<.03	<.06	<2	<.05	<.03	<.09	<.7	<.10	<.04
07-30-03	<.05	<.2	<.10	<.03	<.06	<2	<.05	<.03	<.09	<.7	<.10	<.04
HUNTERDON COUNTY, NJ												
07-24-03	<.05	<.2	<.10	<.03	<.06	<2	<.05	<.03	<.09	<.7	<.10	<.04

Date	Tri- chloro- fluoro- methane water, unfltrd µg/L (34488)	Tri- chloro- methane water, unfltrd µg/L (32106)	Vinyl chlor- ide, water, unfltrd µg/L (39175)	Rn-222, water, unfltrd pCi/L (82303)	Uranium natural water, fltrd, µg/L (22703)
BUCKS COUNTY, PA					
07-29-03	<.09	<.02	<.1	1800	1.50
CHESTER COUNTY, PA					
07-23-03	<.09	.11	<.1	1690	.67
MONTGOMERY COUNTY, PA					
07-28-03	<.09	E.02	<.1	2420	3.18
07-30-03	<.09	<.02	<.1	2270	2.61
HUNTERDON COUNTY, NJ					
07-24-03	<.09	E.01	<.1	2340	2.22

