



2004 Water Year
LEHIGH RIVER BASIN

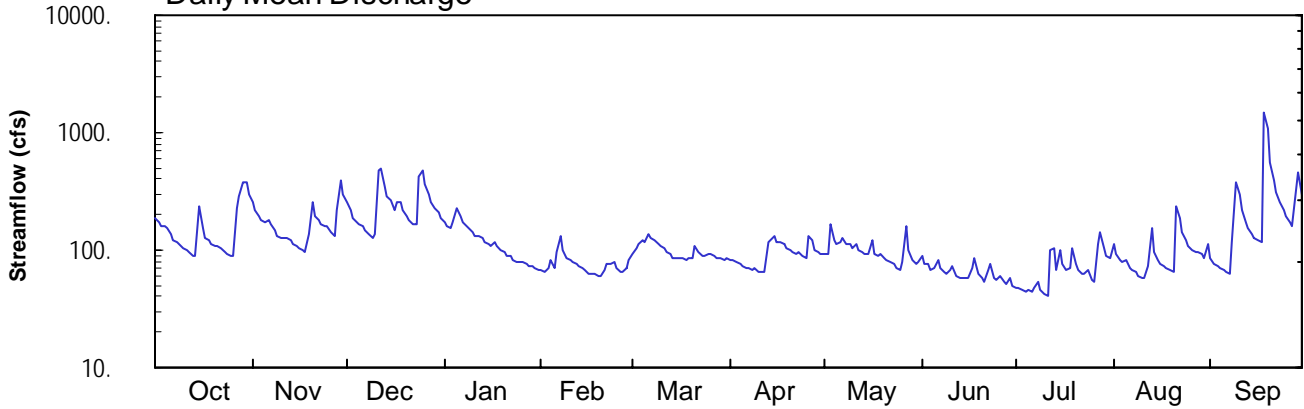
01449360 Pohopoco Creek at Kresgeville, PA

Latitude: 40° 53 ' 51"
Monroe County

Longitude: 075° 30 ' 10"
Datum: 659.72 feet

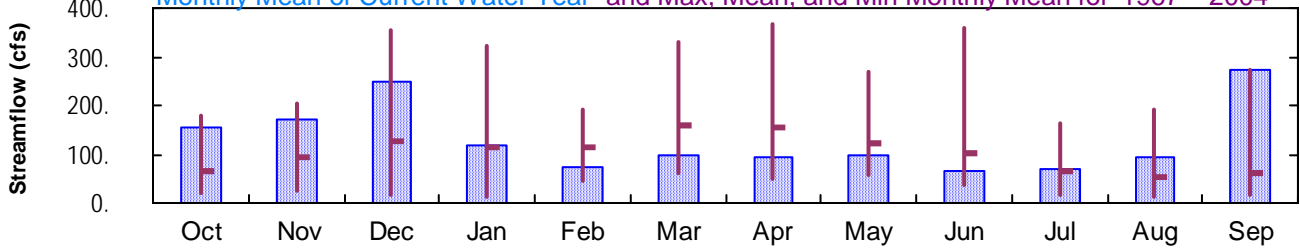
Hydrologic Unit Code: 02040106
Drainage Area: 49.9 mi²

Daily Mean Discharge

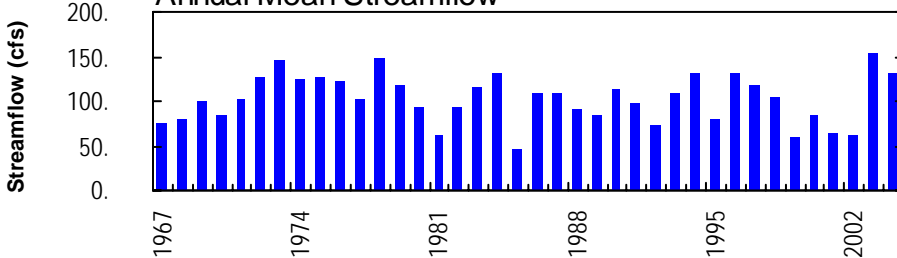


Monthly Statistics

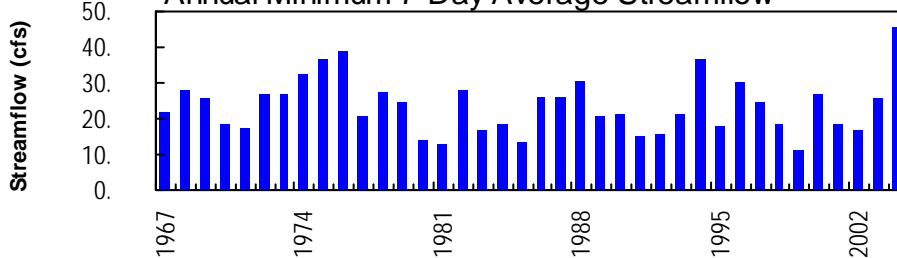
Monthly Mean of Current Water Year and Max, Mean, and Min Monthly Mean for 1967 – 2004



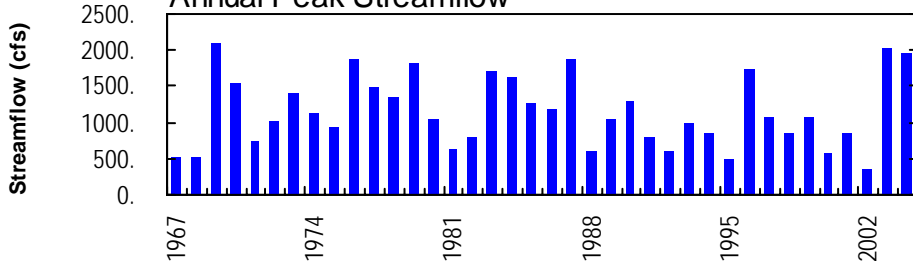
Annual Mean Streamflow



Annual Minimum 7-Day Average Streamflow



Annual Peak Streamflow



LEHIGH RIVER BASIN

01449360 POHOPOCO CREEK AT KRESGEVILLE, PA

LOCATION.--Lat 40°53'51", long 75°30'10", Monroe County, Hydrologic Unit 02040106, on right bank 20 ft downstream from bridge on U.S. Highway 209 at Kresgeville, 0.2 mi downstream from Middle Creek, and 13 mi upstream from mouth.

DRAINAGE AREA.--49.9 mi².

WATER-DISCHARGE RECORDS

PERIOD OF RECORD.--October 1966 to current year.

GAGE.--Water-stage recorder. Datum of gage is 659.72 ft above National Geodetic Vertical Datum of 1929.

REMARKS.--Records good except those for estimated daily discharges, which are poor. Satellite and landline telemetry at station.

PEAK DISCHARGES FOR CURRENT YEAR.--Peak discharges greater than base discharge of 500 ft³/s and maximum (*):

Date	Time	Discharge ft ³ /s	Gage Height (ft)	Date	Time	Discharge ft ³ /s	Gage Height (ft)
Dec. 11	2130	632	5.82	Sept. 18	1430	*1,950	*8.99
Dec. 24	1900	589	5.68	Sept. 28	2245	568	5.61

**DISCHARGE, CUBIC FEET PER SECOND, WATER YEAR OCTOBER 2003 TO SEPTEMBER 2004
DAILY MEAN VALUES**

DAY	OCT	NOV	DEC	JAN	FEB	MAR	APR	MAY	JUN	JUL	AUG	SEP
1	190	254	255	172	67	91	83	91	88	48	114	84
2	174	221	217	161	65	103	82	93	77	47	91	77
3	159	196	189	155	71	113	78	169	75	46	81	73
4	160	178	172	172	84	121	77	119	67	45	80	70
5	153	176	163	228	70	117	73	113	72	46	84	68
6	134	177	159	193	97	134	69	117	83	44	71	66
7	123	167	146	171	133	128	70	128	71	47	67	64
8	116	146	135	162	101	122	69	113	65	53	64	117
9	109	134	127	154	e85	113	70	111	62	45	61	377
10	104	128	135	e140	83	108	65	106	68	42	58	296
11	99	126	476	e130	80	102	64	111	75	41	59	215
12	95	128	499	e130	75	98	66	101	61	101	74	175
13	91	122	347	129	73	91	119	97	58	103	155	152
14	89	113	288	119	71	87	120	93	58	69	97	136
15	239	109	260	114	67	86	132	94	58	101	83	125
16	154	104	220	e110	63	86	117	123	59	75	77	124
17	127	101	252	117	63	85	115	93	71	67	73	116
18	122	98	260	110	62	83	110	88	87	69	69	1490
19	115	135	217	100	61	85	105	92	62	105	67	1070
20	108	258	197	95	61	86	99	86	57	77	65	563
21	106	197	179	89	69	108	97	81	54	67	238	389
22	102	180	169	89	77	96	92	78	68	63	187	304
23	97	166	167	82	77	90	96	75	76	63	140	252
24	92	157	419	e80	78	89	89	72	58	69	122	217
25	88	162	483	e80	70	94	87	68	56	56	110	192
26	87	143	367	79	66	92	132	79	61	54	102	174
27	231	133	298	76	65	90	121	157	54	113	96	158
28	292	222	255	e73	71	86	101	98	52	145	95	306
29	380	395	226	73	83	84	95	83	58	104	92	454
30	379	301	211	e70	---	83	93	76	50	89	86	302
31	302	---	190	e69	---	86	---	79	---	85	110	---
TOTAL	4817	5127	7678	3722	2188	3037	2786	3084	1961	2179	2968	8206
MEAN	155	171	248	120	75.4	98.0	92.9	99.5	65.4	70.3	95.7	274
MAX	380	395	499	228	133	134	132	169	88	145	238	1490
MIN	87	98	127	69	61	83	64	68	50	41	58	64
CFSM	3.11	3.42	4.96	2.41	1.51	1.96	1.86	1.99	1.31	1.41	1.92	5.48
IN.	3.59	3.82	5.72	2.77	1.63	2.26	2.08	2.30	1.46	1.62	2.21	6.12

STATISTICS OF MONTHLY MEAN DATA FOR WATER YEARS 1967 - 2004, BY WATER YEAR (WY)

MEAN	66.3	93.1	128	113	113	157	156	124	100	65.1	53.4	63.1
MAX	181	203	354	323	191	330	369	270	359	165	193	274
(WY)	1977	1973	1997	1979	1998	1977	1983	1989	2003	1969	1969	2004
MIN	18.9	24.7	18.1	13.9	45.0	60.2	47.9	56.9	35.9	18.2	14.0	15.5
(WY)	1981	1981	1999	1981	1980	1985	1985	1995	1999	1999	1999	1980

e Estimated.

LEHIGH RIVER BASIN

01449360 POHOPOCO CREEK AT KRESGEVILLE, PA--Continued

SUMMARY STATISTICS	FOR 2003 CALENDAR YEAR		FOR 2004 WATER YEAR		WATER YEARS 1967 - 2004	
ANNUAL TOTAL	62325		47753			
ANNUAL MEAN	171		130		103	
HIGHEST ANNUAL MEAN					154	
LOWEST ANNUAL MEAN					46.5	
HIGHEST DAILY MEAN	1190	Jun 13	1490	Sep 18	1550	Apr 16 1983
LOWEST DAILY MEAN	e44	Feb 16	41	Jul 11	9.9	Aug 7 1999
ANNUAL SEVEN-DAY MINIMUM	a53	Feb 10	45	Jul 5	11	Aug 2 1999
MAXIMUM PEAK FLOW			b1950	Sep 18	b2080	Jul 29 1969
MAXIMUM PEAK STAGE			8.99	Sep 18	9.21	Jul 29 1969
ANNUAL RUNOFF (CFSM)	3.42		2.61		2.06	
ANNUAL RUNOFF (INCHES)	46.46		35.60		27.95	
10 PERCENT EXCEEDS	316		227		201	
50 PERCENT EXCEEDS	125		97		75	
90 PERCENT EXCEEDS	66		63		28	

- a Computed using estimated daily discharges.
- b From rating curve extended above 800 ft³/s.
- e Estimated.

LEHIGH RIVER BASIN

01449360 POHOPOCO CREEK AT KRESGEVILLE, PA--Continued

WATER-QUALITY RECORDS

PERIOD OF DAILY RECORD.--

WATER TEMPERATURE: Water year 1969 to September 30, 2004. (discontinued)

INSTRUMENTATION.--Temperature probe interfaced with a data collection platform since water year 1986.

REMARKS.--Water temperature records rated good.

EXTREMES FOR PERIOD OF DAILY RECORD.--

WATER TEMPERATURE: Maximum, 31.5°C, July 25, 1970; minimum, 0.0°C, many days during winters.

EXTREMES FOR CURRENT YEAR.--

WATER TEMPERATURE: Maximum, 20.5°C, July 5; minimum, 0.0°C, many days during winter.

WATER TEMPERATURE, DEGREES CELSIUS, WATER YEAR OCTOBER 2003 TO SEPTEMBER 2004

DAY	MAX	MIN	MEAN	MAX	MIN	MEAN	MAX	MIN	MEAN	MAX	MIN	MEAN
	OCTOBER			NOVEMBER			DECEMBER			JANUARY		
1	11.5	11.0	11.0	12.5	10.0	11.0	7.0	5.5	6.5	5.0	4.0	4.5
2	11.0	9.5	10.0	12.5	11.5	12.0	5.5	3.0	4.5	6.5	4.5	5.5
3	10.0	8.5	9.5	13.5	11.5	12.5	3.0	2.0	3.0	8.0	6.5	7.0
4	10.0	9.5	9.5	13.0	11.5	12.0	4.0	2.0	3.0	8.0	6.5	8.0
5	10.0	8.5	9.0	12.0	11.5	12.0	4.0	2.5	3.5	6.5	5.5	6.0
6	10.0	8.0	9.0	12.0	11.5	12.0	3.0	1.5	2.5	5.5	2.5	4.5
7	10.0	7.5	9.0	11.5	10.0	11.0	2.5	1.5	2.0	2.5	1.0	1.5
8	12.0	9.0	10.5	10.0	6.5	8.0	3.5	2.0	2.5	2.5	1.0	1.5
9	12.5	11.0	12.0	6.5	4.5	5.5	4.0	3.0	3.5	2.5	0.0	1.5
10	13.0	12.0	12.5	5.5	4.0	5.0	5.5	4.0	4.5	0.0	0.0	0.0
11	13.5	11.5	12.5	7.0	5.0	5.5	7.0	5.5	6.5	0.0	0.0	0.0
12	13.0	11.5	12.5	9.5	7.0	8.0	6.0	4.5	5.5	3.0	0.0	1.0
13	13.5	12.0	13.0	10.0	6.5	8.5	4.5	3.5	4.0	4.0	2.0	3.0
14	12.5	11.0	12.0	6.5	5.0	5.5	4.0	1.0	2.0	2.0	0.0	0.5
15	12.5	11.0	12.0	7.0	5.5	6.0	3.5	2.0	3.0	0.0	0.0	0.0
16	11.0	9.5	10.5	7.0	5.5	6.5	4.5	3.0	4.0	0.0	0.0	0.0
17	11.0	10.0	10.5	8.5	7.0	8.0	5.0	4.0	4.5	0.5	0.0	0.0
18	10.5	9.0	10.0	9.0	7.5	8.0	4.0	3.0	3.5	1.5	0.5	0.5
19	10.5	9.5	10.0	11.5	9.0	10.5	4.5	3.5	4.0	1.5	0.5	1.0
20	10.0	8.0	9.0	11.0	8.0	9.5	4.0	3.0	3.5	1.0	0.0	0.5
21	11.5	9.0	10.0	9.0	7.0	8.0	3.5	2.5	3.0	0.5	0.0	0.0
22	11.5	9.5	11.0	9.0	7.5	8.5	5.0	2.5	3.5	1.5	0.0	0.5
23	9.5	7.5	8.0	8.5	7.0	8.0	6.0	5.0	5.5	0.5	0.0	0.0
24	7.5	6.0	7.0	9.5	7.5	8.5	5.5	5.0	5.5	0.5	0.0	0.0
25	8.5	6.0	7.0	8.5	6.0	7.0	5.5	4.5	5.0	0.0	0.0	0.0
26	11.0	8.5	10.0	6.5	5.0	6.0	4.5	4.0	4.5	0.0	0.0	0.0
27	12.5	11.0	12.0	7.5	5.5	6.5	5.5	4.0	4.5	0.5	0.0	0.0
28	11.0	9.0	10.0	9.5	7.5	8.5	5.0	3.5	4.5	0.5	0.0	0.0
29	10.5	9.5	10.0	9.0	6.0	7.5	5.5	3.5	4.5	0.5	0.0	0.0
30	10.0	8.5	9.5	7.0	6.0	6.5	5.5	4.5	5.0	0.0	0.0	0.0
31	11.0	8.5	9.5	---	---	---	5.5	4.5	5.0	0.0	0.0	0.0
MONTH	13.5	6.0	10.3	13.5	4.0	8.4	7.0	1.0	4.1	8.0	0.0	1.5

LEHIGH RIVER BASIN

01449360 POHOPOCO CREEK AT KRESGEVILLE, PA--Continued

CROSS-SECTION ANALYSES, OCTOBER 2003 TO SEPTEMBER 2004

Date	Time	Instantaneous discharge, cfs (00061)	Sample location, cross section ft from rt bank (72103)	Sampling depth, feet (00003)	Temperature, water, deg C (00010)
JUN 2004					
29...	1754	54	0	--	--
29...	1755	--	15	0.90	16.9
29...	1756	--	30	1.15	17.2
29...	1757	--	45	1.20	17.3