



# 2004 Water Year LEHIGH RIVER BASIN

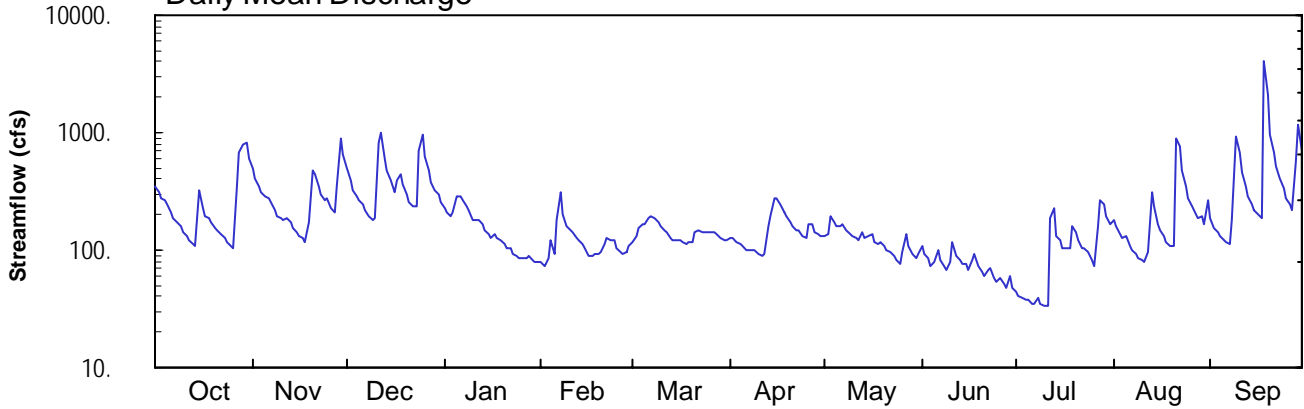
## 01450500 Aquashicola Creek at Palmerton, PA

Latitude: 40° 48 ' 22"  
Carbon County

Longitude: 075° 35 ' 54"  
Datum: 389.08 feet

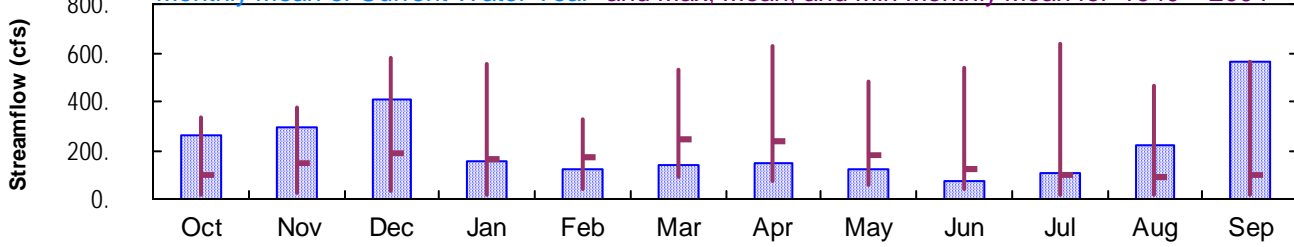
Hydrologic Unit Code: 02040106  
Drainage Area: 76.7 mi<sup>2</sup>

### Daily Mean Discharge

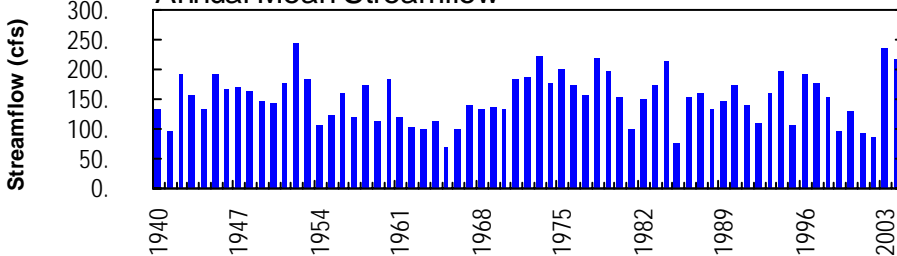


### Monthly Statistics

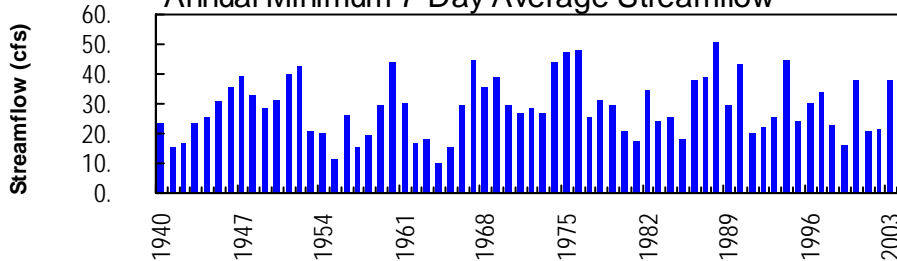
Monthly Mean of Current Water Year and Max, Mean, and Min Monthly Mean for 1940 – 2004



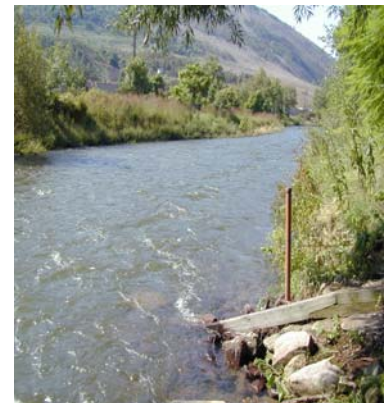
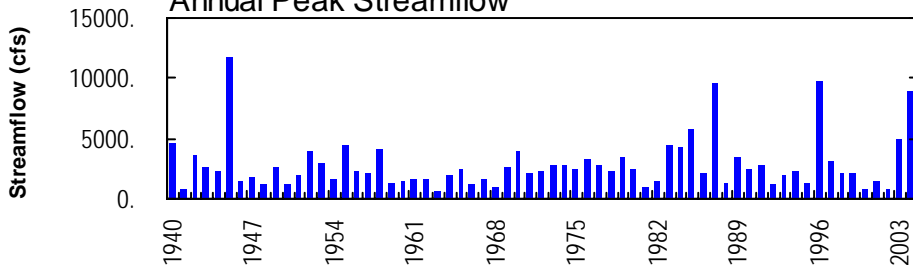
### Annual Mean Streamflow



### Annual Minimum 7-Day Average Streamflow



### Annual Peak Streamflow



**LEHIGH RIVER BASIN**

**01450500 AQUASHICOLA CREEK AT PALMERTON, PA**

**LOCATION.**--Lat 40°48'22", long 75°35'54", Carbon County, Hydrologic Unit 02040106, on right bank 1,200 ft upstream from bridge on Sixth Street in Palmerton, and 1.2 mi upstream from mouth.

**DRAINAGE AREA.**--76.7 mi<sup>2</sup>.

**PERIOD OF RECORD.**--October 1939 to current year.

**REVISED RECORDS.**--WSP 1051: 1940-45 (monthly net diversion), Drainage area.

**GAGE.**--Water-stage recorder. Datum of gage is 389.08 ft above National Geodetic Vertical Datum of 1929.

**REMARKS.**--Records fair except those for estimated daily discharges, which are poor. Occasional diversion from Pohopoco Creek into Aquashicola Creek upstream of station. Several measurements of water temperature were made during the year. Satellite telemetry at station.

**COOPERATION.**--Records of diversion provided by Palmer Water Company.

**PEAK DISCHARGES FOR CURRENT YEAR.**--Peak discharges greater than base discharge of 1,000 ft<sup>3</sup>/s and maximum (\*):

Date	Time	Discharge ft <sup>3</sup> /s	Gage Height (ft)	Date	Time	Discharge ft <sup>3</sup> /s	Gage Height (ft)
Dec. 12	0200	1,330	3.65	Sept. 9	0845	1,050	3.26
Dec. 24	2230	1,200	3.51	Sept. 18	1400	*8,940	*12.17
Aug. 21	1630	1,200	3.51	Sept. 29	0630	1,380	3.82

**DISCHARGE, CUBIC FEET PER SECOND, WATER YEAR OCTOBER 2003 TO SEPTEMBER 2004  
DAILY MEAN VALUES**

DAY	OCT	NOV	DEC	JAN	FEB	MAR	APR	MAY	JUN	JUL	AUG	SEP
1	347	491	491	230	79	116	125	130	107	44	182	183
2	310	410	393	209	72	132	126	134	91	41	160	152
3	275	351	322	198	85	156	117	195	84	40	138	141
4	265	306	283	210	124	165	114	171	74	38	125	131
5	242	288	261	287	94	168	107	162	78	37	129	123
6	210	277	243	286	177	189	101	157	101	36	109	116
7	189	255	215	263	306	191	98	165	83	35	100	110
8	170	218	194	237	206	184	100	145	74	39	92	180
9	157	197	179	216	e160	170	102	135	69	35	86	921
10	143	186	190	180	148	158	93	129	80	34	82	667
11	133	181	829	178	140	146	90	124	118	33	79	453
12	123	185	996	176	126	140	91	121	90	185	97	353
13	114	173	603	168	120	129	162	141	81	228	316	289
14	110	155	468	147	114	119	192	128	77	130	239	248
15	320	142	395	138	102	120	281	134	76	122	163	220
16	230	133	313	127	90	119	279	139	68	105	148	204
17	197	126	387	136	e90	118	244	118	81	105	130	188
18	188	118	440	129	92	115	214	111	93	103	117	4150
19	173	175	359	120	93	119	192	116	73	160	107	2090
20	155	475	300	115	96	115	175	108	65	143	108	962
21	147	436	259	104	111	145	160	100	60	120	873	664
22	139	352	237	103	128	147	148	95	67	105	771	509
23	128	297	232	93	122	142	147	89	69	102	477	407
24	117	268	696	e90	120	140	134	83	57	96	354	331
25	108	273	972	e86	105	144	124	76	53	81	279	281
26	104	228	626	e86	96	139	169	95	57	73	235	248
27	345	206	476	e86	93	139	168	134	51	163	206	222
28	685	350	382	90	97	135	144	107	48	269	189	553
29	779	900	324	84	108	127	135	93	59	242	192	1180
30	819	645	295	79	---	122	134	85	48	194	167	709
31	607	---	256	e78	---	124	---	91	---	166	261	---
TOTAL	8029	8797	12616	4729	3494	4373	4466	3811	2232	3304	6711	16985
MEAN	259	293	407	153	120	141	149	123	74.4	107	216	566
MAX	819	900	996	287	306	191	281	195	118	269	873	4150
MIN	104	118	179	78	72	115	90	76	48	33	79	110
(†)	-2.5	-2.0	-3.5	-1.7	-1.2	-0.7	-1.8	-1.3	-1.0	-1.9	-3.0	-3.8

**STATISTICS OF MONTHLY MEAN DATA FOR WATER YEARS 1940 - 2004, BY WATER YEAR (WY)**

MEAN	99.3	145	185	166	170	244	233	176	120	98.7	87.7	98.3
MAX	331	379	583	558	325	534	625	480	536	638	468	566
(WY)	1956	1973	1997	1996	1971	1977	1983	1989	2003	1945	1942	2004
MIN	17.2	21.6	30.2	19.4	38.4	86.5	74.7	55.9	38.8	19.8	13.7	15.2
(WY)	1964	1965	1999	1981	1940	1985	1985	1941	1955	1955	1964	1964

† Figures of net diversion, equivalent in cubic feet per second. Includes water diverted from Pohopoco Creek to Aquashicola Creek.  
e Estimated.

LEHIGH RIVER BASIN

01450500 AQUASHICOLA CREEK AT PALMERTON, PA--Continued

SUMMARY STATISTICS	FOR 2003 CALENDAR YEAR		FOR 2004 WATER YEAR		WATER YEARS 1940 - 2004	
ANNUAL TOTAL	95548		79547			
ANNUAL MEAN	262		217		152	
HIGHEST ANNUAL MEAN					242	
LOWEST ANNUAL MEAN					69.2	
HIGHEST DAILY MEAN	2620	Sep 23	4150	Sep 18	4680	Jul 10 1945
LOWEST DAILY MEAN	<b>e</b> 36	Feb 17	33	Jul 11	9.1	Sep 15 1964
ANNUAL SEVEN-DAY MINIMUM	<b>a</b> 48	Feb 12	36	Jul 5	10	Sep 10 1964
MAXIMUM PEAK FLOW			<b>b</b> 8940	Sep 18	<b>b</b> 11700	Jul 10 1945
MAXIMUM PEAK STAGE			12.17	Sep 18	13.63	Jul 10 1945
INSTANTANEOUS LOW FLOW					2.6	Sep 12 1957
10 PERCENT EXCEEDS	491		394		304	
50 PERCENT EXCEEDS	192		142		100	
90 PERCENT EXCEEDS	77		79		35	

**a** Computed using estimated daily discharges.

**b** From rating curve extended above 2,300 ft<sup>3</sup>/s on basis of contracted-opening measurement of peak flow.

**e** Estimated.