



2004 Water Year
LEHIGH RIVER BASIN

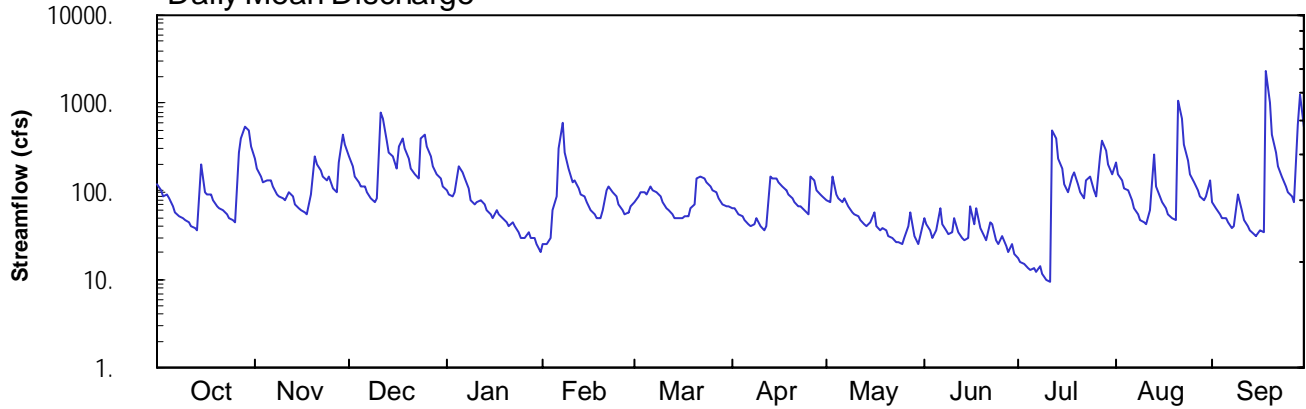
01451800 Jordan Creek near Schnecksville, PA

Latitude: 40° 39' 42"
Lehigh County

Longitude: 075° 37' 38"
Datum: 381.16 feet

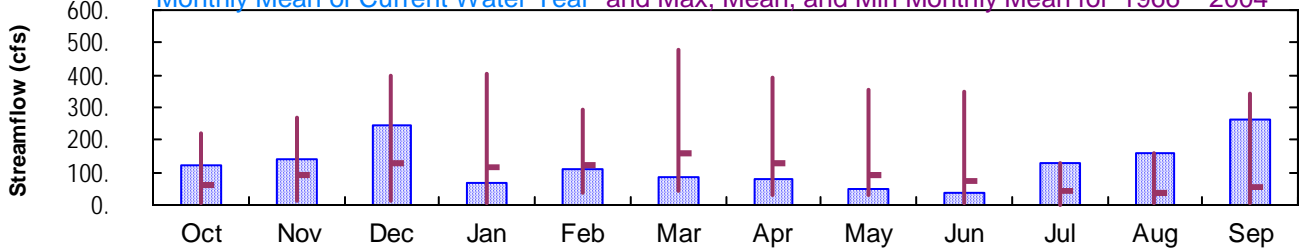
Hydrologic Unit Code: 02040106
Drainage Area: 53. mi²

Daily Mean Discharge

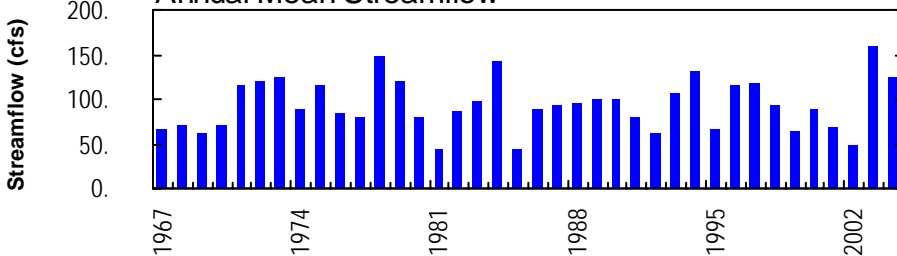


Monthly Statistics

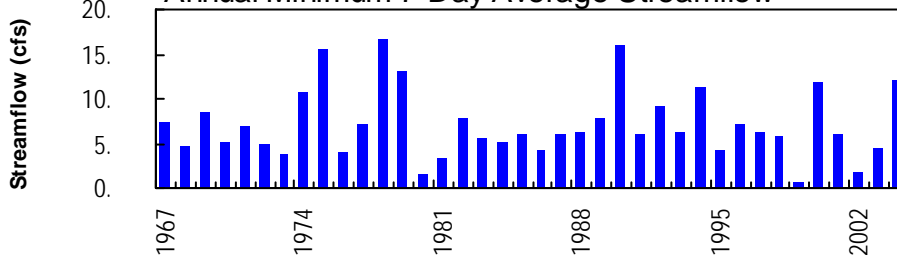
Monthly Mean of Current Water Year and Max, Mean, and Min Monthly Mean for 1966 – 2004



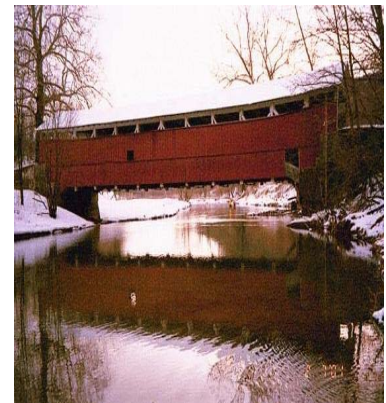
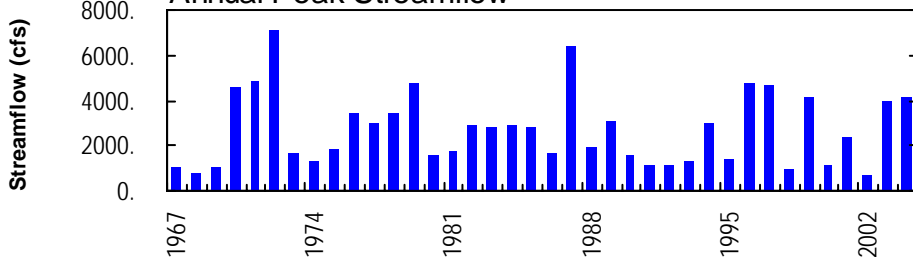
Annual Mean Streamflow



Annual Minimum 7-Day Average Streamflow



Annual Peak Streamflow



LEHIGH RIVER BASIN

01451800 JORDAN CREEK NEAR SCHNECKSVILLE, PA

LOCATION.--Lat 40°39'42", long 75°37'38", Lehigh County, Hydrologic Unit 02040106, on left bank 54 ft downstream from wooden covered bridge at Trexler-Lehigh County Game Preserve, 1.0 mi downstream from Mill Creek, and 1.1 mi southwest of Schnecksville.

DRAINAGE AREA.--53.0 mi².

PERIOD OF RECORD.--February 1966 to current year.

REVISED RECORDS.--WDR PA-90-1: 1989.

GAGE.--Water-stage recorder, crest-stage gage, and concrete control. Datum of gage is 381.16 ft above National Geodetic Vertical Datum of 1929. Prior to Oct. 2, 1973, nonrecording gage at bridge 54 ft upstream at same datum.

REMARKS.--Records good except those for estimated daily discharges, which are poor. Several measurements of water temperature were made during the year. Satellite telemetry at station.

PEAK DISCHARGES FOR CURRENT YEAR.--Peak discharges greater than base discharge of 900 ft³/s and maximum (*):

Date	Time	Discharge ft ³ /s	Gage Height (ft)	Date	Time	Discharge ft ³ /s	Gage Height (ft)
Dec. 11	1615	1,130	5.45	Aug. 21	1315	1,540	6.13
Feb. 6	----	Unknown	Ice jam	Sept. 18	1230	*4,160	*9.46
July 12	1715	1,210	5.60	Sept. 29	0215	1,830	6.57

DISCHARGE, CUBIC FEET PER SECOND, WATER YEAR OCTOBER 2003 TO SEPTEMBER 2004
DAILY MEAN VALUES

DAY	OCT	NOV	DEC	JAN	FEB	MAR	APR	MAY	JUN	JUL	AUG	SEP
1	118	238	253	101	e25	76	65	78	51	17	217	76
2	103	183	189	92	e25	86	64	74	42	16	154	63
3	90	149	147	87	e30	98	56	151	36	15	131	55
4	94	125	124	98	e60	98	53	93	30	13	109	50
5	83	132	115	192	e90	92	48	82	37	13	103	50
6	67	132	112	162	e300	111	42	74	63	14	80	44
7	58	113	e95	e140	e600	104	41	85	43	12	65	39
8	53	95	e85	e110	276	95	43	67	36	15	55	40
9	50	86	75	e80	179	89	51	58	32	12	48	91
10	46	82	83	e70	128	76	40	54	35	10	44	63
11	44	81	795	e75	132	66	37	52	49	9.2	43	47
12	41	96	667	e80	106	61	40	47	34	478	63	40
13	38	86	373	e70	92	54	144	42	29	402	256	36
14	37	72	278	e60	88	49	142	40	28	231	113	33
15	198	65	249	e55	e75	49	139	46	30	178	90	32
16	97	61	185	e50	e60	50	124	59	67	121	76	37
17	90	58	327	e60	e55	53	115	40	42	97	65	34
18	93	54	392	e55	e50	51	104	36	64	149	55	2280
19	78	94	311	e50	e50	63	94	37	38	166	49	1020
20	67	250	234	e45	e60	72	83	36	31	118	46	435
21	64	204	180	e40	101	140	74	32	27	98	1090	275
22	61	176	153	e45	116	151	68	30	44	84	678	191
23	55	147	143	e40	96	140	67	27	43	136	341	144
24	50	131	407	e35	89	125	61	26	29	144	220	116
25	46	146	438	e30	e70	115	54	26	25	101	158	98
26	44	109	328	e30	e60	104	149	29	31	89	124	87
27	280	96	246	e35	56	97	131	41	23	243	102	74
28	388	218	190	e30	58	85	104	56	20	369	89	570
29	543	445	157	e30	67	73	94	31	25	284	80	1240
30	486	338	142	e25	---	67	87	25	20	200	88	531
31	325	---	117	e20	---	69	---	31	---	152	131	---
TOTAL	3887	4262	7590	2092	3194	2659	2414	1605	1104	3986.2	4963	7891
MEAN	125	142	245	67.5	110	85.8	80.5	51.8	36.8	129	160	263
MAX	543	445	795	192	600	151	149	151	67	478	1090	2280
MIN	37	54	75	20	25	49	37	25	20	9.2	43	32
CFSM	2.37	2.68	4.62	1.27	2.08	1.62	1.52	0.98	0.69	2.43	3.02	4.96
IN.	2.73	2.99	5.33	1.47	2.24	1.87	1.69	1.13	0.77	2.80	3.48	5.54

STATISTICS OF MONTHLY MEAN DATA FOR WATER YEARS 1966 - 2004, BY WATER YEAR (WY)

MEAN	63.3	94.1	129	118	124	161	127	94.0	72.4	43.2	37.6	57.2
MAX	220	270	397	404	295	479	391	353	346	129	160	343
(WY)	1997	1971	1997	1979	1971	1994	1983	1989	1972	2004	2004	1987
MIN	8.37	12.4	12.0	6.85	35.2	41.3	31.0	31.5	9.18	1.68	3.36	3.69
(WY)	1973	2002	1999	1981	1980	1985	1985	1995	1966	1966	2002	1980

e Estimated.

LEHIGH RIVER BASIN

01451800 JORDAN CREEK NEAR SCHNECKSVILLE, PA--Continued

SUMMARY STATISTICS	FOR 2003 CALENDAR YEAR		FOR 2004 WATER YEAR		WATER YEARS 1966 - 2004	
ANNUAL TOTAL	59926		45647.2			
ANNUAL MEAN	164		125		93.9	
HIGHEST ANNUAL MEAN					159	2003
LOWEST ANNUAL MEAN					43.9	1985
HIGHEST DAILY MEAN	2160	Sep 23	2280	Sep 18	2800	Sep 9 1987
LOWEST DAILY MEAN	e14	Feb 18	9.2	Jul 11	0.54	Aug 7 1999
ANNUAL SEVEN-DAY MINIMUM	a19	Feb 13	12	Jul 5	0.63	Aug 2 1999
MAXIMUM PEAK FLOW			b4160	Sep 18	b7100	Jun 22 1972
MAXIMUM PEAK STAGE			9.46	Sep 18	c12.32	Jun 22 1972
INSTANTANEOUS LOW FLOW			8.8	Jul 11,12	0.48	Aug 6 1999
ANNUAL RUNOFF (CFSM)	3.10		2.35		1.77	
ANNUAL RUNOFF (INCHES)	42.06		32.04		24.07	
10 PERCENT EXCEEDS	349		251		209	
50 PERCENT EXCEEDS	103		76		48	
90 PERCENT EXCEEDS	33		30		11	

a Computed using estimated daily discharges.

b From rating curve extended above 2,010 ft³/s on basis of contracted-opening measurement of peak flow.

c From floodmark.

e Estimated.