



2004 Water Year FRANKFORD CREEK BASIN

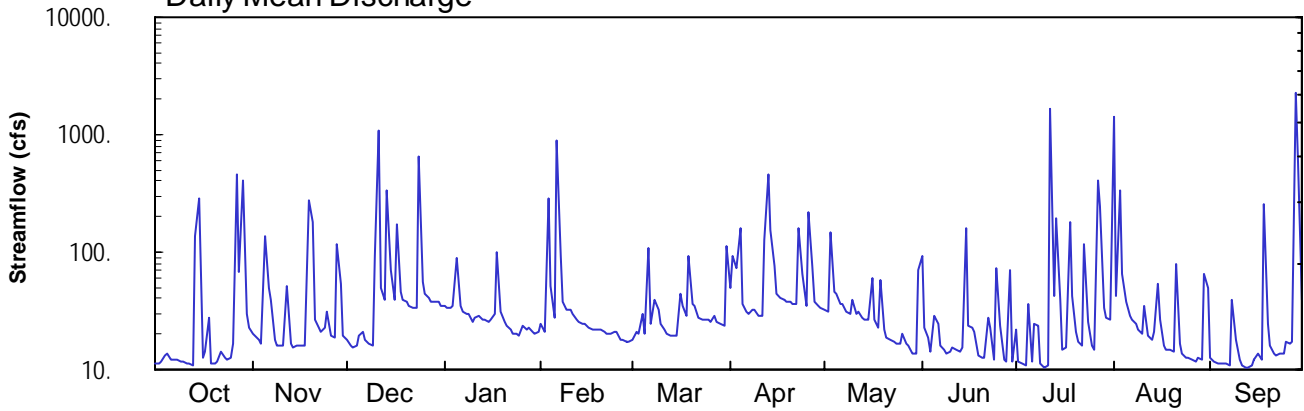
01467087 Frankford Creek at Castor Ave, Philadelphia, PA

Latitude: 40°00'57"
Philadelphia County

Longitude: 075°05'50"
Datum: 16.56 feet

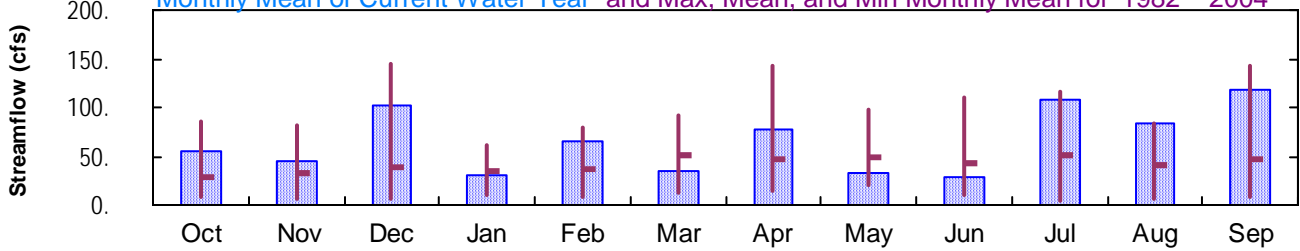
Hydrologic Unit Code: 02040202
Drainage Area: 30.4 mi²

Daily Mean Discharge

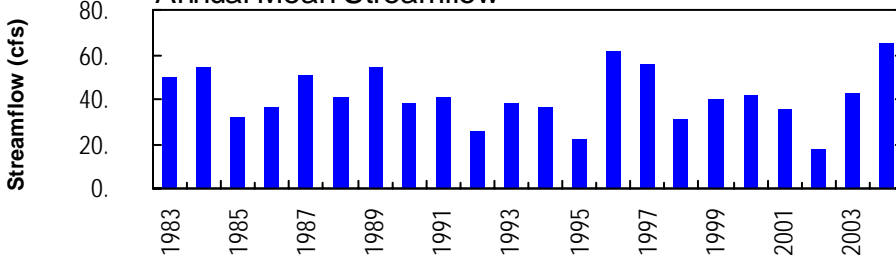


Monthly Statistics

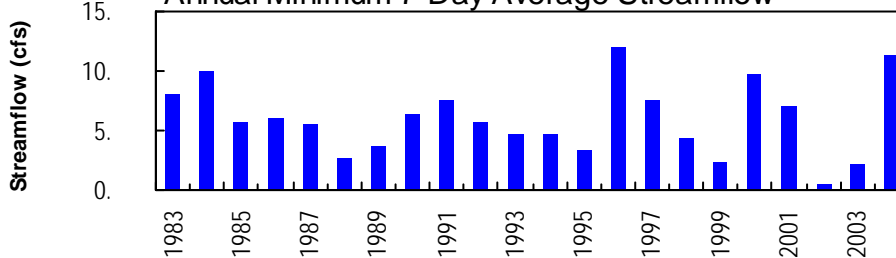
Monthly Mean of Current Water Year and Max, Mean, and Min Monthly Mean for 1982 – 2004



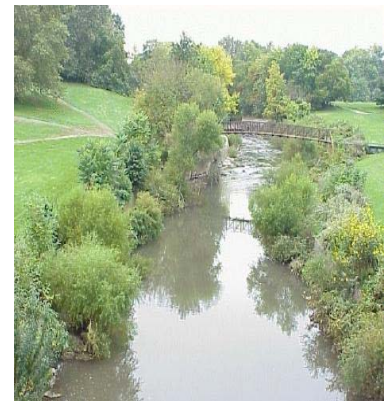
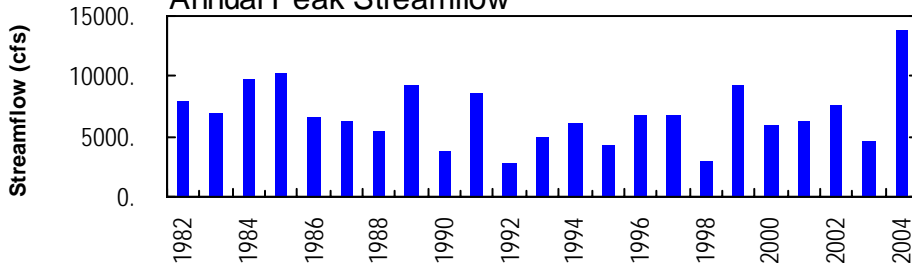
Annual Mean Streamflow



Annual Minimum 7-Day Average Streamflow



Annual Peak Streamflow



FRANKFORD CREEK BASIN

01467087 FRANKFORD CREEK AT CASTOR AVENUE, PHILADELPHIA, PA

LOCATION.--Lat 40°00'57", long 75°05'50", Philadelphia County, Hydrologic Unit 02040203, on left bank at upstream side of Castor Avenue bridge, and 2.8 mi upstream from mouth in northeast Philadelphia.

DRAINAGE AREA.--30.4 mi².

PERIOD OF RECORD.--July 1982 to current year.

GAGE.--Water-stage recorder, crest-stage gage, and concrete control. Datum of gage is 16.56 ft above National Geodetic Vertical Datum of 1929.

REMARKS.--No estimated daily discharges. Records poor. Satellite telemetry at station.

PEAK DISCHARGES FOR CURRENT YEAR.--Peak discharges greater than base discharge of 3,000 ft³/s and maximum (*):

Date	Time	Discharge ft ³ /s	Gage Height (ft)	Date	Time	Discharge ft ³ /s	Gage Height (ft)
Oct. 15	0000	3,460	6.49	July 27	2200	5,020	7.85
Dec. 11	0845	4,880	7.74	Aug. 1	0845	12,300	12.94
Feb. 6	1330	3,370	6.41	Aug. 3	1715	4,420	7.35
July 12	1700	8,130	10.16	Sept. 28	1930	*13,900	*13.94
July 14	2145	3,660	6.68				

DISCHARGE, CUBIC FEET PER SECOND, WATER YEAR OCTOBER 2003 TO SEPTEMBER 2004
DAILY MEAN VALUES

DAY	OCT	NOV	DEC	JAN	FEB	MAR	APR	MAY	JUN	JUL	AUG	SEP
1	11	20	18	35	25	18	49	33	93	22	1450	13
2	11	19	16	34	21	21	92	32	22	12	42	12
3	12	18	15	33	283	20	74	147	19	11	332	11
4	13	16	16	35	52	30	162	47	14	11	65	11
5	14	135	19	90	27	20	36	43	28	36	37	11
6	12	49	21	34	876	108	31	37	24	12	28	11
7	12	39	18	31	92	24	30	36	16	25	26	11
8	12	18	17	30	38	40	32	31	15	24	24	39
9	12	16	16	29	32	32	33	30	14	11	22	18
10	12	16	93	26	33	24	28	39	14	11	20	12
11	11	16	1060	27	30	22	29	30	16	11	35	11
12	11	51	50	28	27	20	125	31	15	1660	20	10
13	11	17	39	27	26	19	463	28	14	42	18	10
14	137	15	337	27	25	19	155	27	15	194	21	11
15	285	16	71	26	24	19	76	27	159	40	54	12
16	13	16	40	27	23	44	44	61	24	15	27	14
17	14	16	171	29	22	35	41	26	23	16	16	12
18	28	16	45	101	22	29	39	23	21	181	15	254
19	11	280	38	31	22	92	38	57	13	42	15	25
20	11	181	37	25	22	36	38	22	13	21	14	16
21	12	27	35	23	21	34	37	19	13	17	80	14
22	14	22	34	22	20	28	36	18	27	16	16	13
23	13	21	33	20	20	27	162	17	22	116	14	14
24	12	23	655	21	21	27	65	16	12	25	13	14
25	13	31	55	20	21	27	34	17	73	16	13	18
26	16	19	44	23	18	26	218	20	23	15	12	17
27	451	19	41	22	18	29	77	16	12	405	12	17
28	68	115	38	23	17	25	38	16	12	247	13	2290
29	400	54	38	21	17	24	34	14	72	33	12	579
30	30	19	38	20	---	24	33	13	12	27	66	40
31	23	---	35	21	---	114	---	69	---	26	50	---
TOTAL	1705	1320	3183	961	1895	1057	2349	1042	850	3340	2582	3540
MEAN	55.0	44.0	103	31.0	65.3	34.1	78.3	33.6	28.3	108	83.3	118
MAX	451	280	1060	101	876	114	463	147	159	1660	1450	2290
MIN	11	15	15	20	17	18	28	13	12	11	12	10
CFSM	1.81	1.45	3.38	1.02	2.15	1.12	2.58	1.11	0.93	3.54	2.74	3.88
IN.	2.09	1.62	3.89	1.18	2.32	1.29	2.87	1.28	1.04	4.09	3.16	4.33

STATISTICS OF MONTHLY MEAN DATA FOR WATER YEARS 1982 - 2004, BY WATER YEAR (WY)

MEAN	27.8	33.4	39.5	34.3	35.8	50.1	47.3	48.0	43.1	50.2	40.6	47.9
MAX	86.5	81.7	145	61.8	80.4	91.4	143	98.4	111	116	83.3	143
(WY)	1997	1987	1997	1996	1988	1994	1983	1989	1989	1989	2004	1999
MIN	7.38	6.64	6.47	10.6	7.79	11.7	14.4	20.8	11.1	4.91	5.66	9.02
(WY)	2002	2002	1999	1985	2002	1985	2002	1986	1999	1999	1995	1998

FRANKFORD CREEK BASIN

01467087 FRANKFORD CREEK AT CASTOR AVENUE, PHILADELPHIA, PA--Continued

SUMMARY STATISTICS	FOR 2003 CALENDAR YEAR		FOR 2004 WATER YEAR		WATER YEARS 1982 - 2004	
ANNUAL TOTAL	18727.5		23824			
ANNUAL MEAN	51.3		65.1		41.5	
HIGHEST ANNUAL MEAN					65.1	2004
LOWEST ANNUAL MEAN					17.9	2002
HIGHEST DAILY MEAN	1060	Dec 11	2290	Sep 28	3140	Sep 16 1999
LOWEST DAILY MEAN	7.7	Feb 16	10	Sep 12,13	0.39	Sep 25 2002
ANNUAL SEVEN-DAY MINIMUM	10	Feb 11	11	Sep 1	0.48	Sep 19 2002
MAXIMUM PEAK FLOW			a13900	Sep 28	a13900	Sep 28 2004
MAXIMUM PEAK STAGE			13.94	Sep 28	13.94	Sep 28 2004
INSTANTANEOUS LOW FLOW			9.4	Oct 14b	0.31	Sep 25 2002
ANNUAL RUNOFF (CFSM)	1.69		2.14		1.37	
ANNUAL RUNOFF (INCHES)	22.92		29.15		18.57	
10 PERCENT EXCEEDS	119		95		80	
50 PERCENT EXCEEDS	22		24		16	
90 PERCENT EXCEEDS	12		12		6.7	

a From rating curve extended above 8,000 ft³/s on basis of slope-area measurement at gage height 9.97 ft.

b Also July 4, 5, 11, Sept. 13.