



# 2004 Water Year SCHUYLKILL RIVER BASIN

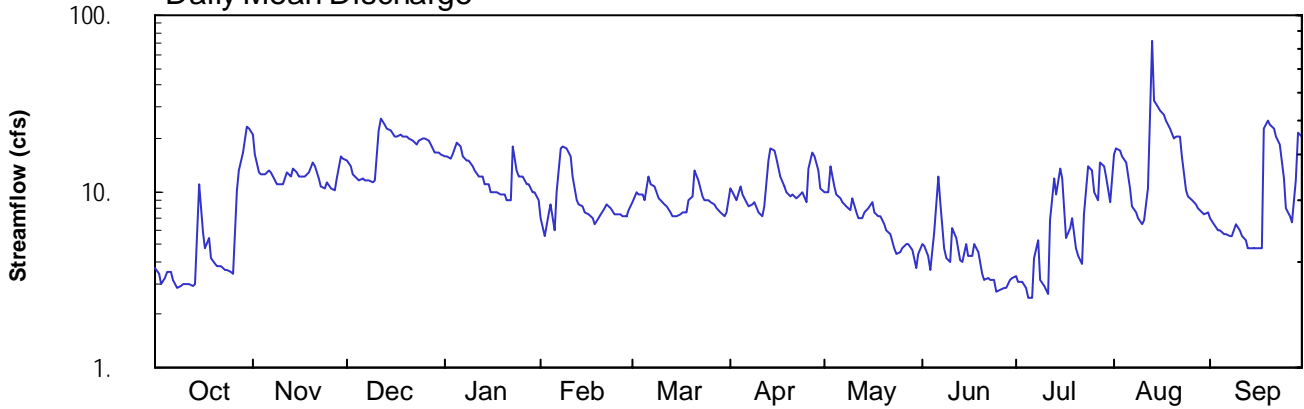
## 01470853 Furnace Creek at Robeson, PA

Latitude: 40° 20' 24"  
Berks County

Longitude: 076° 08' 37"  
Datum: 527.20 feet

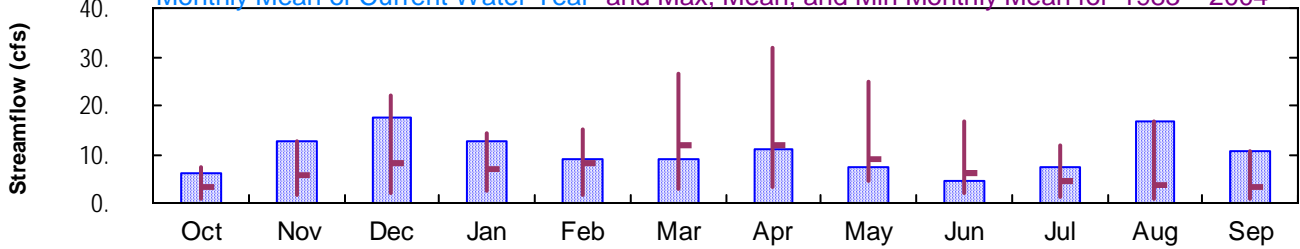
Hydrologic Unit Code: 02040203  
Drainage Area: 4.18 mi<sup>2</sup>

### Daily Mean Discharge

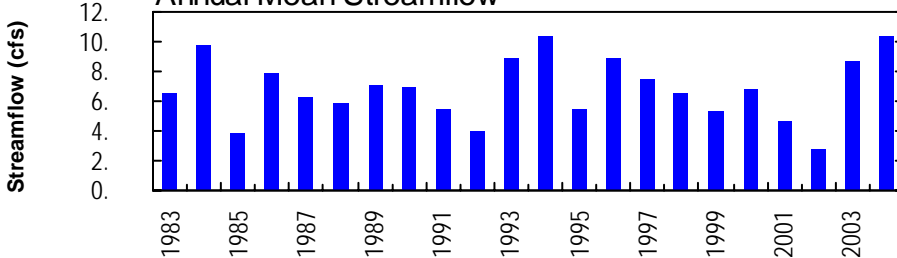


### Monthly Statistics

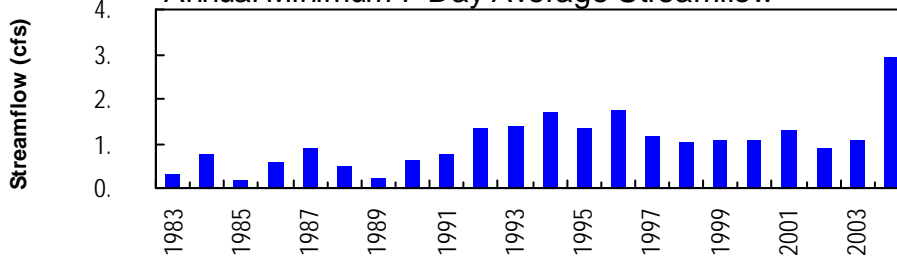
Monthly Mean of Current Water Year and Max, Mean, and Min Monthly Mean for 1983 – 2004



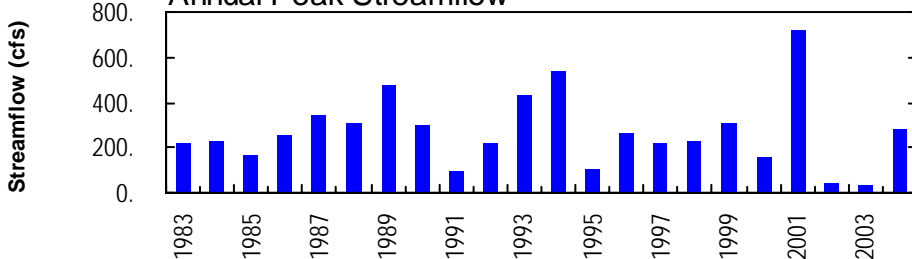
### Annual Mean Streamflow



### Annual Minimum 7-Day Average Streamflow



### Annual Peak Streamflow



01470853-Furnace Creek at Robeson

**SCHUYLKILL RIVER BASIN**

**01470853 FURNACE CREEK AT ROBESONIA, PA**

**LOCATION.**--Lat 40°20'24", long 76°08'37", Berks County, Hydrologic Unit 02040202, on left bank 500 ft upstream from Furnace Street in Robesonia.

**DRAINAGE AREA.**--4.18 mi<sup>2</sup>.

**PERIOD OF RECORD.**--October 1982 to current year.

**REVISED RECORDS.**--WDR PA-87-1: 1986 (P).

**GAGE.**--Water-stage recorder and crest-stage gage. Datum of gage is 527.20 ft above National Geodetic Vertical Datum of 1929. Prior to Mar. 27, 1986, 760 ft downstream at different datum.

**REMARKS.**--Records poor. Flow slightly regulated by Furnace Creek Reservoir 0.6 mi upstream, until drained in early 2002. Reservoir now acts as a retention basin and releases water through an unregulated 10 in. outlet pipe. Several measurements of water temperature were made during the year. Satellite telemetry at station.

**PEAK DISCHARGES FOR CURRENT YEAR.**--Peak discharges greater than base discharge of 100 ft<sup>3</sup>/s and maximum (\*):

Date	Time	Discharge ft <sup>3</sup> /s	Gage Height (ft)	Date	Time	Discharge ft <sup>3</sup> /s	Gage Height (ft)
Aug. 13	0315	*281	*2.96	No other peak greater than base discharge.			

DISCHARGE, CUBIC FEET PER SECOND, WATER YEAR OCTOBER 2003 TO SEPTEMBER 2004  
DAILY MEAN VALUES

DAY	OCT	NOV	DEC	JAN	FEB	MAR	APR	MAY	JUN	JUL	AUG	SEP
1	3.7	21	15	16	e7.0	8.7	10	9.9	5.0	3.3	16	7.0
2	3.4	16	14	16	e5.5	9.8	9.9	9.9	4.9	3.1	18	6.5
3	3.0	13	12	15	e7.5	9.5	8.9	14	4.3	3.1	17	6.0
4	3.2	12	12	16	e8.5	9.5	11	11	3.6	2.8	16	6.0
5	3.5	13	12	19	e6.0	9.0	9.7	9.6	5.9	2.5	14	5.8
6	3.5	13	12	18	e10	12	8.6	9.1	12	2.5	10	5.7
7	3.1	13	12	16	17	11	8.3	8.6	8.7	4.2	8.3	5.5
8	2.8	12	11	15	18	11	8.4	8.2	4.8	5.3	7.6	5.5
9	2.9	11	11	15	17	9.2	8.6	7.9	4.1	3.1	7.0	6.4
10	3.0	11	12	e14	16	8.8	7.6	9.2	3.9	2.9	6.6	6.0
11	3.0	11	22	e13	12	8.5	7.3	7.7	6.2	2.6	6.9	5.5
12	3.0	13	26	e12	8.9	8.2	8.2	7.1	5.4	6.9	10	5.2
13	2.9	12	24	e12	8.5	7.6	15	7.0	4.1	12	72	4.8
14	3.0	14	23	e11	8.2	7.3	18	7.6	4.0	9.7	33	4.7
15	11	13	22	e11	7.7	7.3	17	8.1	5.0	14	30	4.7
16	5.9	12	20	e10	e7.5	7.5	15	8.7	4.3	12	29	4.7
17	4.8	12	20	e10	e7.0	7.7	12	7.5	4.3	5.4	27	4.8
18	5.4	12	21	e10	e6.5	7.6	11	7.3	5.0	6.2	25	23
19	4.2	13	20	e9.5	e7.0	8.8	10	7.3	4.6	7.0	23	25
20	3.8	15	20	e9.5	e7.5	9.4	9.4	6.6	3.4	4.8	20	24
21	3.8	14	20	e9.0	e8.0	13	9.6	6.0	3.2	4.3	20	23
22	3.8	12	20	e9.0	e8.5	11	9.1	5.7	3.2	3.9	21	21
23	3.6	11	18	e18	e8.0	9.3	9.3	4.8	3.2	7.4	16	19
24	3.6	10	19	e13	e7.5	9.0	10	4.4	3.1	14	10	12
25	3.5	11	20	e12	e7.5	8.9	8.7	4.5	2.7	13	9.4	8.0
26	3.4	10	20	e12	7.4	8.6	14	4.7	2.8	9.9	8.8	7.2
27	10	10	20	e11	7.3	8.6	17	5.0	2.8	8.8	8.3	6.7
28	13	12	18	e11	7.3	8.0	16	5.0	2.8	14	8.0	12
29	17	16	17	e10	7.9	7.5	13	4.6	3.1	14	7.7	21
30	23	15	17	e10	---	7.3	10	3.7	3.2	12	7.4	21
31	23	---	16	e9.0	---	7.5	---	4.4	---	8.7	7.7	---
TOTAL	186.8	383	546	392.0	262.7	277.1	330.6	225.1	133.6	223.4	520.7	317.7
MEAN	6.03	12.8	17.6	12.6	9.06	8.94	11.0	7.26	4.45	7.21	16.8	10.6
MAX	23	21	26	19	18	13	18	14	12	14	72	25
MIN	2.8	10	11	9.0	5.5	7.3	7.3	3.7	2.7	2.5	6.6	4.7
CFSM	1.44	3.05	4.21	3.03	2.17	2.14	2.64	1.74	1.07	1.72	4.02	2.53
IN.	1.66	3.41	4.86	3.49	2.34	2.47	2.94	2.00	1.19	1.99	4.63	2.83

**STATISTICS OF MONTHLY MEAN DATA FOR WATER YEARS 1983 - 2004, BY WATER YEAR (WY)**

MEAN	3.31	5.65	7.97	7.11	8.24	11.7	11.7	9.12	6.01	4.38	3.47	3.29
MAX	7.31	12.8	22.0	14.3	15.2	26.7	31.8	24.7	16.7	11.7	16.8	10.6
(WY)	1997	2004	1997	1996	1996	1994	1993	1989	2003	1984	2004	2004
MIN	0.94	1.68	2.06	2.34	1.80	2.72	3.32	4.29	2.10	1.36	0.85	0.63
(WY)	1989	2001	2002	1983	2002	2002	1985	1997	1985	1983	1983	1983

e Estimated.

**SCHUYLKILL RIVER BASIN**

**01470853 FURNACE CREEK AT ROBESONIA, PA--Continued**

<b>SUMMARY STATISTICS</b>	<b>FOR 2003 CALENDAR YEAR</b>		<b>FOR 2004 WATER YEAR</b>		<b>WATER YEARS 1983 - 2004</b>	
ANNUAL TOTAL	3683.0		3798.7			
ANNUAL MEAN	10.1		10.4		6.82	
<u>HIGHEST ANNUAL MEAN</u>					<u>10.5</u>	<u>1994</u>
LOWEST ANNUAL MEAN					2.76	2002
HIGHEST DAILY MEAN	30	Jun 21-23	72	Aug 13	139	Dec 5 1993
LOWEST DAILY MEAN	1.9	Sep 10-12	2.5	Jul 5,6	0.11	Sep 11 1983
<u>ANNUAL SEVEN-DAY MINIMUM</u>	<u>2.0</u>	<u>Sep 7</u>	<u>2.9</u>	<u>Jun 23</u>	<u>0.19</u>	<u>Sep 16 1985</u>
MAXIMUM PEAK FLOW			281	Aug 13	<b>a</b> 718	Dec 17 2000
MAXIMUM PEAK STAGE			2.96	Aug 13	<b>b</b> 4.72	Jan 19 1996
ANNUAL RUNOFF (CFSM)	2.41		2.48		1.63	
<u>ANNUAL RUNOFF (INCHES)</u>	<u>32.78</u>		<u>33.81</u>		<u>22.18</u>	
10 PERCENT EXCEEDS	20		19		14	
50 PERCENT EXCEEDS	8.8		9.0		4.7	
90 PERCENT EXCEEDS	3.1		3.6		1.4	

**a** From rating curve extended above 308 ft<sup>3</sup>/s on basis of slope-area measurement of peak flow at gage height 3.11 ft.

**b** From peak indicator; ice jam.