



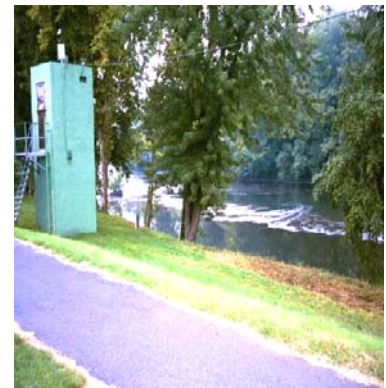
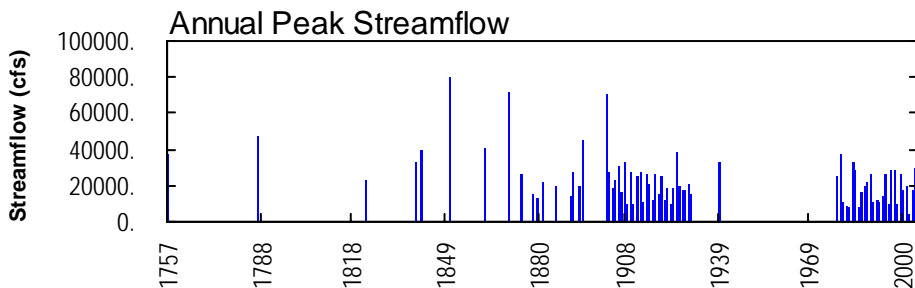
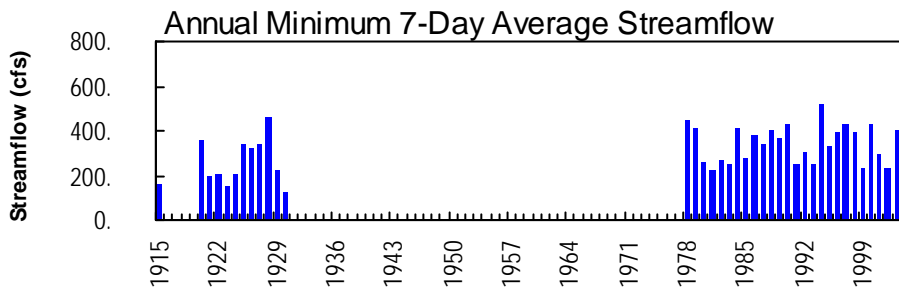
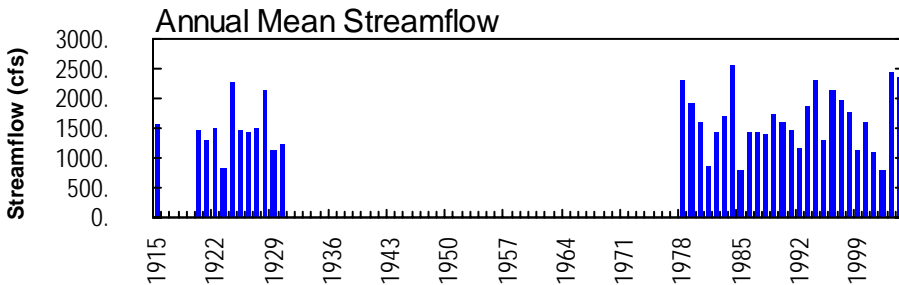
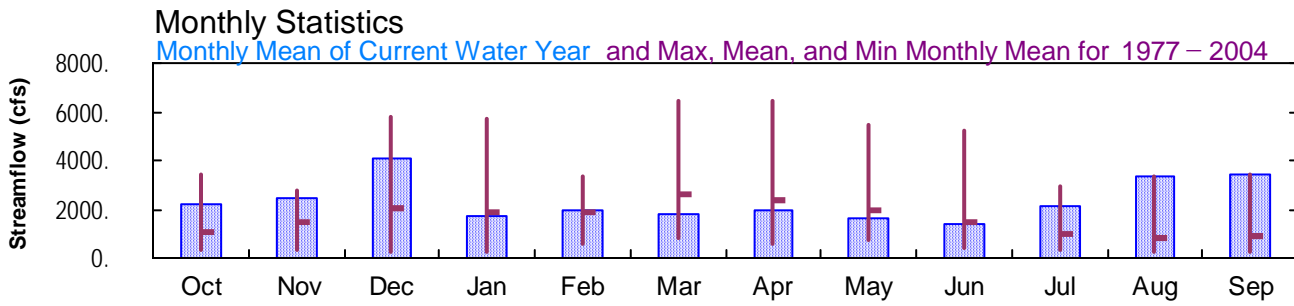
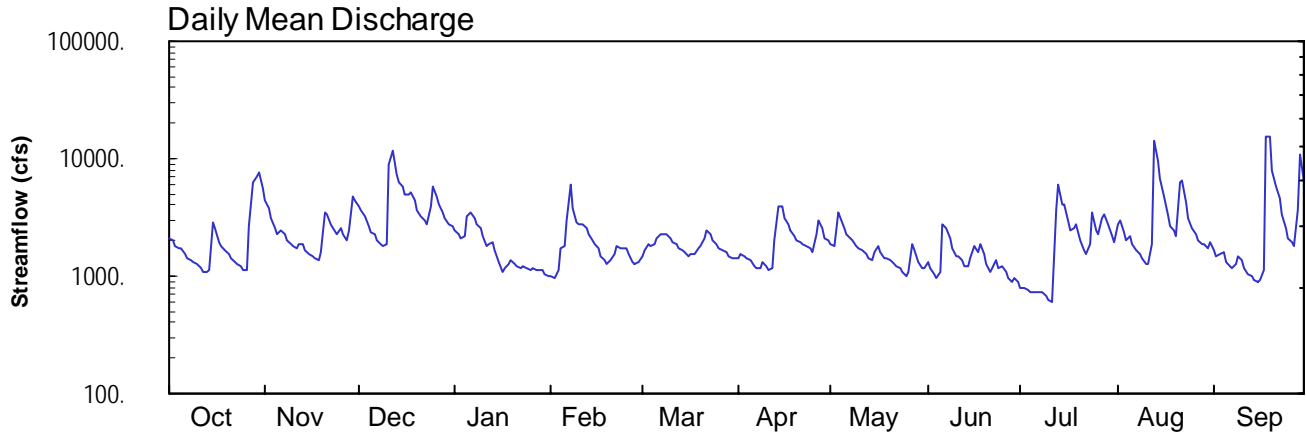
2004 Water Year SCHUYLKILL RIVER BASIN

01471510 Schuylkill River at Reading, PA

Latitude: 40° 20' 05"
Berks County

Longitude: 075° 56' 12"
Datum: 185.50 feet

Hydrologic Unit Code: 02040203
Drainage Area: 880. mi²



01471510-Schuylkill River at Reading

SCHUYLKILL RIVER BASIN

01471510 SCHUYLKILL RIVER AT READING, PA

LOCATION.--Lat 40°20'05", long 75°56'12", Berks County, Hydrologic Unit 02040203, on left bank 200 ft downstream from bridge on Penn Street at Reading, and 1.0 mi downstream from Tulpehocken Creek.

DRAINAGE AREA.--880 mi².

PERIOD OF RECORD.--May 1914 to September 1915, October 1919 to September 1930, and July 1977 to current year. Prior to October 1914 monthly discharge only, published in WSP 1302. Diversion by Schuylkill Navigation Canal included during the navigation seasons of 1914-15.

REVISED RECORD.--WDR PA-78-1: 1977.

GAGE.--Water-stage recorder and crest-stage gage. Datum of gage is 185.50 ft above National Geodetic Vertical Datum of 1929 (Pennsylvania Railroad datum). May 7, 1914, to Sept. 30, 1930, and July 6, 1979, to Dec. 5, 1980, nonrecording gage. June 30, 1977, to July 5, 1979, water-stage recorder at site 1,500 ft downstream on right bank at same datum.

REMARKS.--Records good except those for estimated daily discharges, which are poor. Flow regulated by Still Creek Reservoir (station 01469200) since February 1933, Blue Marsh Lake (station 01470870) since April 1979, and to some extent by Lake Ontelaunee. Several measurements of water temperature were made during the year. Satellite and landline telemetry at station.

EXTREMES OUTSIDE PERIOD OF RECORD.--Flood of June 23, 1972, reached a stage of about 31.3 ft at site 1,500 ft downstream, from floodmarks, discharge, about 90,000 ft³/s.

DISCHARGE, CUBIC FEET PER SECOND, WATER YEAR OCTOBER 2003 TO SEPTEMBER 2004
DAILY MEAN VALUES

DAY	OCT	NOV	DEC	JAN	FEB	MAR	APR	MAY	JUN	JUL	AUG	SEP
1	2140	4370	3920	2430	994	1460	1420	1890	1310	798	2760	1650
2	2010	3720	3680	2250	961	1650	1560	1830	1160	796	2930	1460
3	1810	3120	3170	2120	1110	1860	1460	3450	1060	770	2370	1530
4	1710	2540	2690	2180	1730	1820	1420	3090	945	738	1990	1610
5	1750	2310	2350	3260	1760	1890	1340	2530	1060	722	2200	1300
6	1550	2420	2240	3470	2990	2090	1230	2250	2730	740	1850	1220
7	1430	2270	2030	3080	6060	2240	1170	2130	2600	723	1630	1170
8	1360	2050	1880	2730	3810	2260	1180	2000	2120	728	1540	1270
9	1300	1880	1810	2560	2890	2260	1320	1790	1700	679	1430	1480
10	1240	1800	1860	2170	2790	2110	1190	1720	1480	625	1270	1380
11	1150	1760	8750	e1790	2800	1970	1120	1640	1490	601	1250	1150
12	1100	1890	11500	e1880	2570	1870	1170	1530	1350	3630	1850	1030
13	1060	1870	7190	1950	2290	1760	2050	1430	1210	5910	14100	989
14	1110	1690	6190	e1640	2000	1660	3910	1360	1220	4090	9460	938
15	2840	1530	5800	e1340	1890	1570	3900	1580	1430	4120	6750	895
16	2570	1470	4920	e1100	1710	1490	3140	1770	1780	3030	4670	928
17	1950	1430	4890	e1180	1510	1550	2730	1600	1590	2490	3400	1140
18	1790	1390	5180	e1280	1340	1540	2470	1440	1860	2520	2640	15100
19	1640	1590	4360	e1340	1280	1710	2220	1400	1560	2740	2470	15600
20	1530	3540	3650	e1270	1370	1790	2030	1350	1240	2000	2200	7870
21	1410	3320	3210	e1220	1540	2120	1930	1270	1100	1670	6330	5870
22	1330	2760	2940	e1180	1800	2410	1840	1240	1150	1520	6390	4620
23	1270	2510	2760	1230	1700	2300	1810	1180	1390	1870	4250	3370
24	1200	2310	3950	1180	1760	2040	1710	1090	1150	3430	3120	2550
25	1140	2600	5770	1130	1760	1890	1590	1010	1210	2420	2550	2130
26	1110	2290	4760	1150	1520	1720	2280	1100	1090	2310	2230	1940
27	2630	2030	4030	1130	1310	1650	3030	1840	970	3090	2040	1770
28	6260	2420	3530	1130	1270	1600	2600	1650	876	3300	1890	3610
29	7010	4840	3090	1110	1310	1500	2140	1320	954	2780	1840	10800
30	7530	4350	2780	1050	---	1440	1990	1160	890	2200	1710	6470
31	5660	---	2620	1010	---	1400	---	1170	---	1930	1900	---
TOTAL	69590	74070	127500	53540	57825	56620	58950	51810	41675	64970	103010	102840
MEAN	2245	2469	4113	1727	1994	1826	1965	1671	1389	2096	3323	3428
MAX	7530	4840	11500	3470	6060	2410	3910	3450	2730	5910	14100	15600
MIN	1060	1390	1810	1010	961	1400	1120	1010	876	601	1250	895

STATISTICS OF MONTHLY MEAN DATA FOR WATER YEARS 1977 - 2004, BY WATER YEAR (WY)

MEAN	1098	1471	2078	1888	1897	2641	2385	1953	1460	994	820	921
MAX	3390	2791	5763	5682	3358	6484	6472	5493	5203	2907	3323	3428
(WY)	1980	1997	1997	1979	1984	1994	1983	1989	2003	1984	2004	2004
MIN	322	352	278	265	609	824	606	724	415	330	257	273
(WY)	1981	2002	1981	1981	2002	1985	1985	1999	1999	1999	2002	1983

e Estimated.

SCHUYLKILL RIVER BASIN

01471510 SCHUYLKILL RIVER AT READING, PA--Continued

SUMMARY STATISTICS	FOR 2003 CALENDAR YEAR		FOR 2004 WATER YEAR		WATER YEARS 1977 - 2004	
ANNUAL TOTAL	961533		862400			
ANNUAL MEAN	2634		2356		1636	
HIGHEST ANNUAL MEAN					2559	
LOWEST ANNUAL MEAN					803	
HIGHEST DAILY MEAN	14400	Jun 21	15600	Sep 19	24700	Jan 25 1979
LOWEST DAILY MEAN	664	Feb 16	601	Jul 11	180	Oct 1 1980
ANNUAL SEVEN-DAY MINIMUM	771	Feb 12	688	Jul 5	224	Dec 24 1980
MAXIMUM PEAK FLOW			29700	Sep 18	a 37500	
MAXIMUM PEAK STAGE			16.24	Sep 18	b 17.50	
10 PERCENT EXCEEDS	5140		4050		3330	
50 PERCENT EXCEEDS	2060		1810		1110	
90 PERCENT EXCEEDS	929		1110		402	

a From rating curve extended above 31,000 ft³/s, gage height 17.36 ft, at site 150 ft downstream.

b Discharge, 33,100 ft³/s, from rating curve extended above 31,000 ft³/s.