



2004 Water Year SCHUYLKILL RIVER BASIN

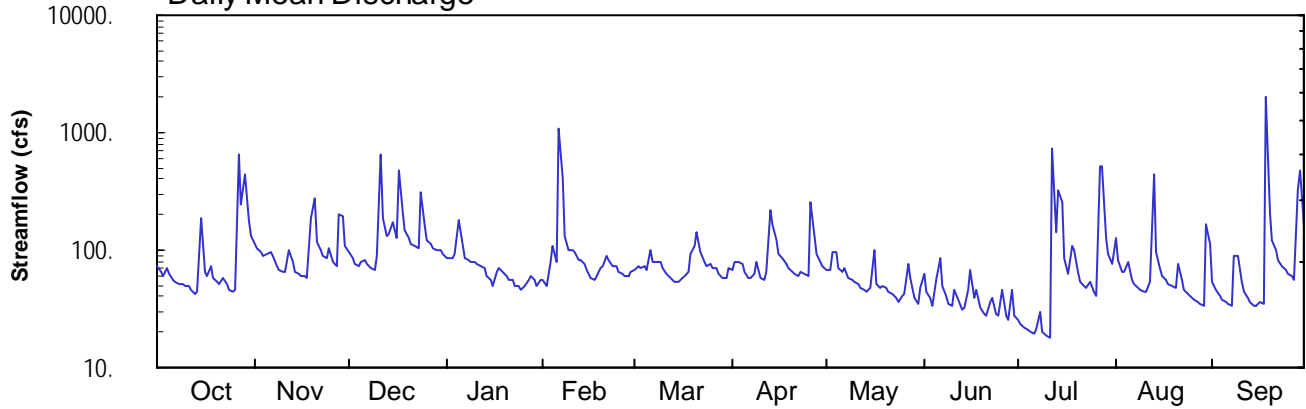
01472198 Perkiomen Creek at East Greenville, PA

Latitude: 40° 23 ' 38"
Montgomery County

Longitude: 075° 30 ' 57"
Datum: 288.50 feet

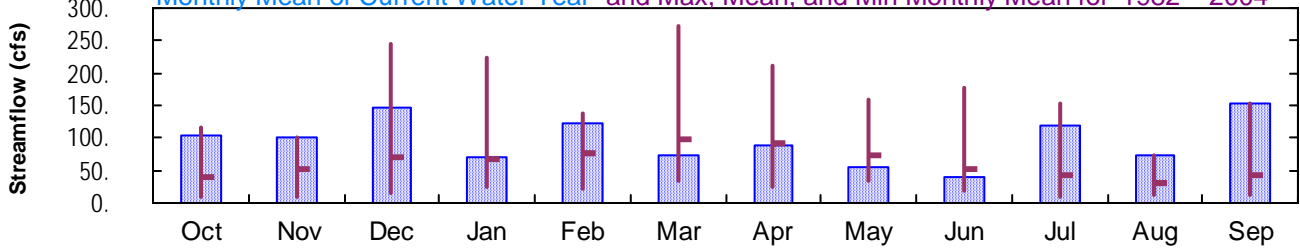
Hydrologic Unit Code: 02040203
Drainage Area: 38. mi²

Daily Mean Discharge

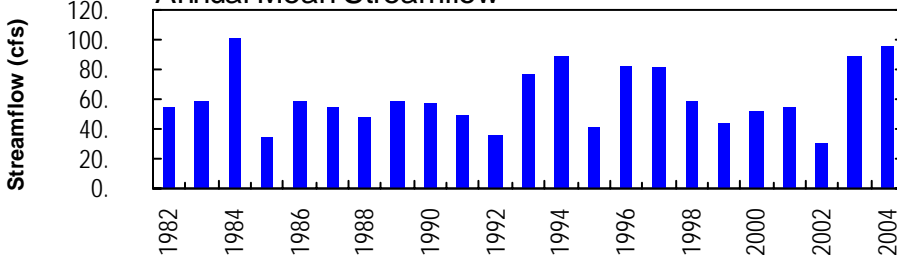


Monthly Statistics

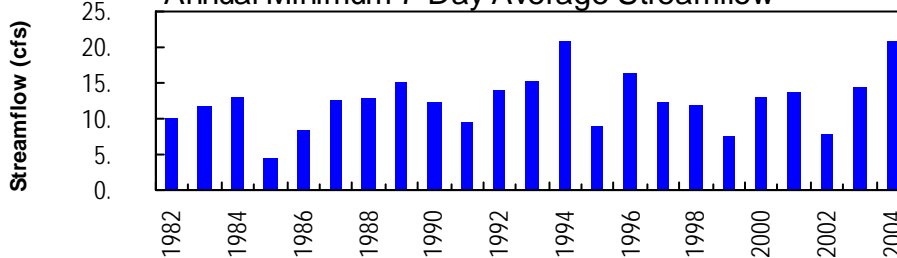
Monthly Mean of Current Water Year and Max, Mean, and Min Monthly Mean for 1982 – 2004



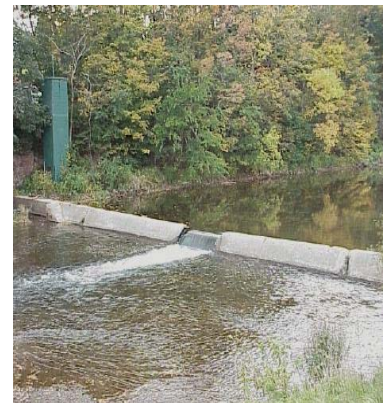
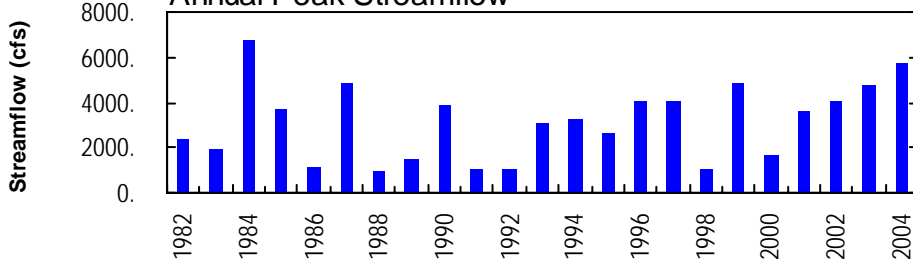
Annual Mean Streamflow



Annual Minimum 7-Day Average Streamflow



Annual Peak Streamflow



SCHUYLKILL RIVER BASIN

01472198 PERKIOMEN CREEK AT EAST GREENVILLE, PA

LOCATION.--Lat 40°23'38", long 75°30'57", Montgomery County, Hydrologic Unit 02040203, on right bank 100 ft upstream from bridge on Church Road, 0.9 mi upstream from Molasses Creek, and 1.0 mi southwest of East Greenville.

DRAINAGE AREA.--38.0 mi².

PERIOD OF RECORD.--October 1981 to current year.

REVISED RECORD.--WDR PA-98-1: 1982-97(P).

GAGE.--Water-stage recorder, crest-stage gage, and concrete control. Datum of gage is 288.50 ft above National Geodetic Vertical Datum of 1929.

REMARKS.--Records good except those for estimated daily discharges, and those greater than 1,500 ft³/s, which are poor. Several measurements of water temperature were made during the year. Satellite and landline telemetry at station.

PEAK DISCHARGES FOR CURRENT YEAR.--Peak discharges greater than base discharge of 1,000 ft³/s and maximum (*):

Date	Time	Discharge ft ³ /s	Gage Height (ft)	Date	Time	Discharge ft ³ /s	Gage Height (ft)
Oct. 27	1915	1,520	4.26	July 14	2345	1,210	3.99
Dec. 11	0900	1,090	3.86	July 27	2230	2,170	4.80
Dec. 17	1130	1,110	3.88	Aug. 13	0745	1,520	4.26
Feb. 6	1615	2,970	5.38	Sept. 18	1000	*5,720	*7.07
July 12	2030	2,720	5.21	Sept. 29	0015	1,800	4.50

**DISCHARGE, CUBIC FEET PER SECOND, WATER YEAR OCTOBER 2003 TO SEPTEMBER 2004
DAILY MEAN VALUES**

DAY	OCT	NOV	DEC	JAN	FEB	MAR	APR	MAY	JUN	JUL	AUG	SEP
1	72	114	97	87	e55	67	68	68	62	25	128	53
2	66	104	87	87	e50	74	78	67	43	24	82	45
3	60	95	77	86	e80	71	80	97	40	22	66	41
4	72	88	74	92	e110	74	76	95	33	21	64	38
5	64	91	79	179	e80	69	66	70	57	20	79	36
6	56	97	82	112	e1100	99	59	64	87	19	56	35
7	53	88	75	87	e400	80	57	71	50	21	51	33
8	52	74	70	83	e130	79	64	59	40	30	48	90
9	51	68	68	e80	e100	78	79	55	35	20	45	89
10	50	65	90	e78	e100	70	59	54	34	18	44	55
11	49	65	643	e76	e95	64	56	51	46	18	45	44
12	47	100	189	e74	83	60	66	48	37	733	53	39
13	43	79	129	e70	81	56	218	46	31	143	439	37
14	44	65	138	e60	77	54	165	44	32	324	95	34
15	186	63	173	e55	67	54	123	47	47	252	71	33
16	64	61	125	e50	58	57	94	100	67	87	61	36
17	61	60	476	e65	56	60	84	52	39	64	55	35
18	73	58	208	e70	60	65	77	48	47	108	52	2020
19	57	187	149	e65	70	93	71	49	33	102	50	211
20	53	275	126	e60	73	107	65	48	29	65	47	121
21	52	117	112	e55	89	142	64	45	27	54	77	98
22	59	98	108	e55	82	97	61	43	36	49	56	84
23	52	88	105	e50	72	78	64	39	40	48	46	73
24	47	84	305	e50	73	73	64	36	28	54	42	67
25	44	104	160	e45	65	75	61	40	27	44	40	62
26	45	80	122	e50	62	72	252	42	47	40	38	59
27	648	74	112	e55	61	70	136	76	28	511	36	56
28	243	199	104	e60	61	63	94	57	25	513	35	318
29	447	196	100	e55	64	59	80	39	46	127	33	478
30	179	109	99	e50	---	57	73	34	28	93	164	163
31	131	---	92	e55	---	69	---	47	---	76	110	---
TOTAL	3220	3046	4574	2196	3554	2286	2654	1731	1221	3725	2308	4583
MEAN	104	102	148	70.8	123	73.7	88.5	55.8	40.7	120	74.5	153
MAX	648	275	643	179	1100	142	252	100	87	733	439	2020
MIN	43	58	68	45	50	54	56	34	25	18	33	33
CFSM	2.73	2.67	3.88	1.86	3.23	1.94	2.33	1.47	1.07	3.16	1.96	4.02
IN.	3.15	2.98	4.48	2.15	3.48	2.24	2.60	1.69	1.20	3.65	2.26	4.49

STATISTICS OF MONTHLY MEAN DATA FOR WATER YEARS 1982 - 2004, BY WATER YEAR (WY)

	1982	1983	1984	1985	1986	1987	1988	1989	1990	1991	1992	1993	1994	1995	1996	1997	1998	1999	2000	2001	2002	2003	2004	
MEAN	38.6	51.5	71.4	68.8	75.7	98.2	93.2	72.0	52.3	43.1	30.0	42.1												
MAX	117	102	246	223	138	273	213	160	176	154	74.5	153												
(WY)	1997	2004	1997	1996	1984	1994	1983	1989	2003	1984	2004	2004												
MIN	10.6	10.5	14.7	25.4	21.4	34.5	24.9	35.0	18.5	10.2	11.3	13.4												
(WY)	2002	2002	1999	2002	2002	1985	1985	1995	1999	1999	1995	1986												

e Estimated.

SCHUYLKILL RIVER BASIN

01472198 PERKIOMEN CREEK AT EAST GREENVILLE, PA--Continued

SUMMARY STATISTICS	FOR 2003 CALENDAR YEAR		FOR 2004 WATER YEAR		WATER YEARS 1982 - 2004	
ANNUAL TOTAL	37149		35098			
ANNUAL MEAN	102		95.9		61.3	
HIGHEST ANNUAL MEAN					101	1984
LOWEST ANNUAL MEAN					31.3	2002
HIGHEST DAILY MEAN	1200	Jun 21	2020	Sep 18	2800	Jan 19 1996
LOWEST DAILY MEAN	14	Feb 17	18	Jul 10,11	4.2	Aug 21 1985
ANNUAL SEVEN-DAY MINIMUM	23	Aug 24	21	Jul 5	4.4	Aug 18 1985
MAXIMUM PEAK FLOW			a5720	Sep 18	a6740	Jun 25 1984
MAXIMUM PEAK STAGE			7.07	Sep 18	7.26	Jun 25 1984
INSTANTANEOUS LOW FLOW			17	Jul 11,12	3.8	Sep 5 1985
ANNUAL RUNOFF (CFSM)	2.68		2.52		1.61	
ANNUAL RUNOFF (INCHES)	36.37		34.36		21.92	
10 PERCENT EXCEEDS	179		142		114	
50 PERCENT EXCEEDS	70		65		38	
90 PERCENT EXCEEDS	35		36		15	

a From rating curve extended above 1,500 ft³/s on basis of contracted-opening measurement at gage height 6.53 ft and Flood Insurance Study of Montgomery County.