



# 2004 Water Year SCHUYLKILL RIVER BASIN

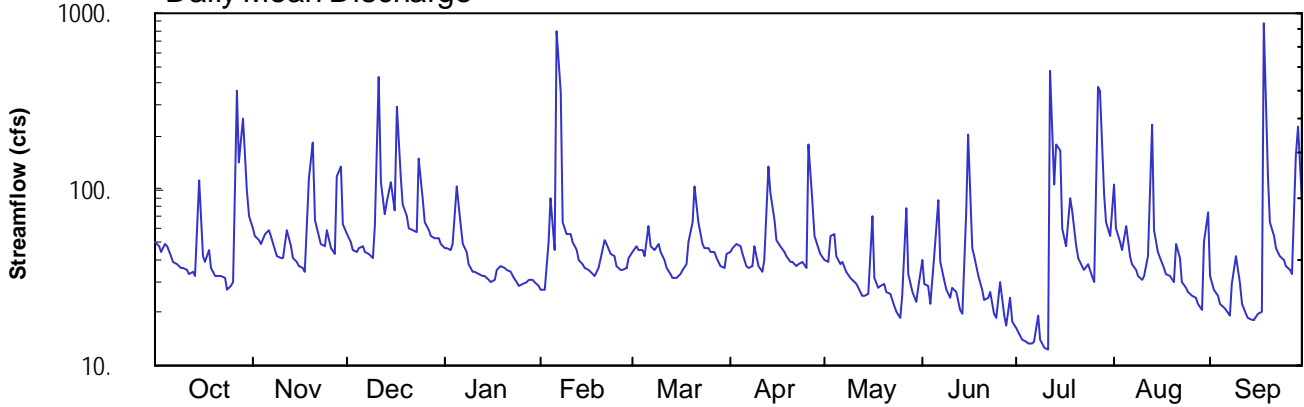
## 01472199 West Branch Perkiomen Creek at Hillegass, PA

Latitude: 40° 22' 26"  
Montgomery County

Longitude: 075° 31' 22"  
Datum: 290.00 feet

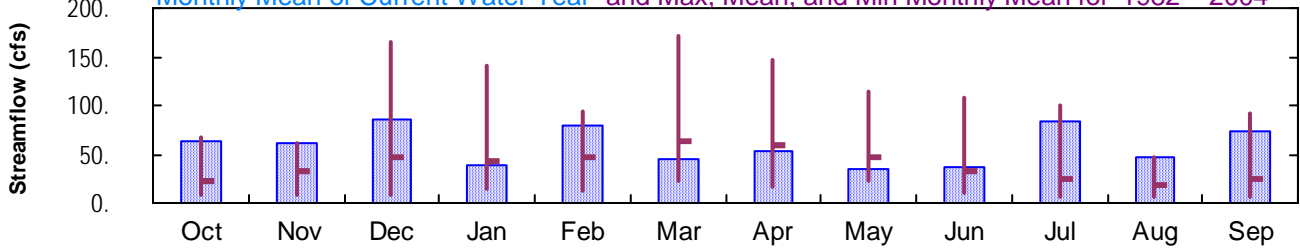
Hydrologic Unit Code: 02040203  
Drainage Area: 23. mi<sup>2</sup>

### Daily Mean Discharge

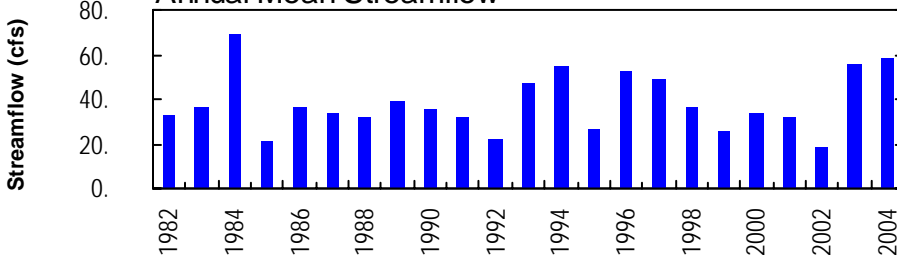


### Monthly Statistics

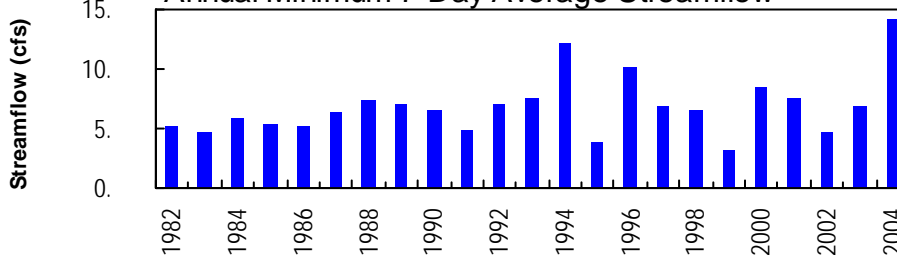
Monthly Mean of Current Water Year and Max, Mean, and Min Monthly Mean for 1982 – 2004



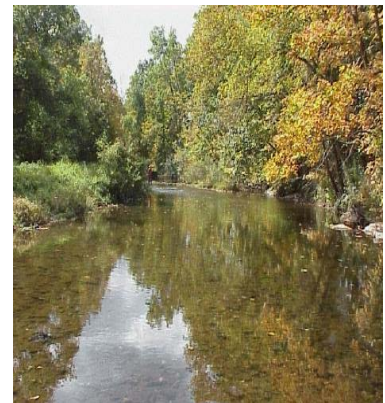
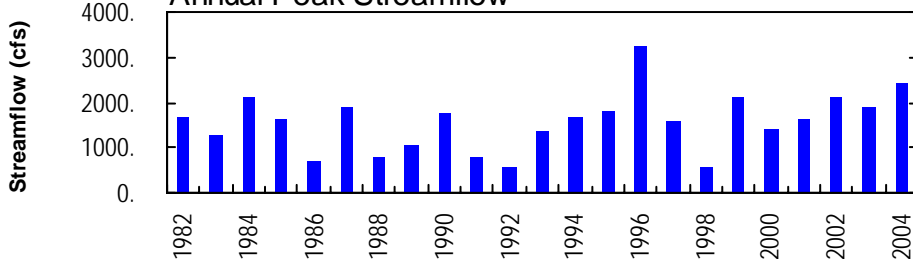
### Annual Mean Streamflow



### Annual Minimum 7-Day Average Streamflow



### Annual Peak Streamflow



**SCHUYLKILL RIVER BASIN**

**01472199 WEST BRANCH PERKIOMEN CREEK AT HILLEGASS, PA**

**LOCATION.**--Lat 40°22'26", long 75°31'22", Montgomery County, Hydrologic Unit 02040203, on left bank 0.3 mi downstream from bridge on private road off Heffner Road, and 0.5 mi north of Hillegass.

**DRAINAGE AREA.**--23.0 mi<sup>2</sup>.

**PERIOD OF RECORD.**--October 1981 to current year. Prior to October 1992, published as "*Northwest Branch*".

**REVISED RECORDS:** WDR PA-01-1: 1982-85, 1987, 1989, 1990, 1993-96 (P).

**GAGE.**--Water-stage recorder, crest-stage gage, and concrete control. Datum of gage is 290.00 ft above National Geodetic Vertical Datum of 1929.

**REMARKS.**--Records good except those for estimated daily discharges and those above 560 ft<sup>3</sup>/s, which are poor. Several measurements of water temperature were made during the year. Satellite and landline telemetry at station.

**PEAK DISCHARGES FOR CURRENT YEAR.**--Peak discharges greater than base discharge of 800 ft<sup>3</sup>/s and maximum (\*):

Date	Time	Discharge ft <sup>3</sup> /s	Gage Height (ft)	Date	Time	Discharge ft <sup>3</sup> /s	Gage Height (ft)
Feb. 6	----	Unknown	Ice jam	July 27	2230	1,320	4.81
June 15	2345	1,210	4.70	Aug. 13	0345	990	4.46
July 12	1700	1,270	4.76	Sept. 18	1200	*2,420	*5.76

DISCHARGE, CUBIC FEET PER SECOND, WATER YEAR OCTOBER 2003 TO SEPTEMBER 2004  
DAILY MEAN VALUES

DAY	OCT	NOV	DEC	JAN	FEB	MAR	APR	MAY	JUN	JUL	AUG	SEP
1	50	60	56	47	e27	44	45	40	40	16	106	32
2	48	54	50	46	e27	48	46	39	29	16	60	27
3	45	51	46	45	e50	45	49	54	28	14	50	25
4	49	49	44	49	e90	45	47	56	22	14	46	22
5	47	55	46	104	e45	42	43	41	42	13	61	21
6	41	59	47	63	e800	62	37	38	87	13	42	21
7	39	54	44	e49	e350	48	35	38	39	14	37	19
8	37	45	42	e44	e65	45	37	34	31	19	35	29
9	36	42	41	e38	e55	49	47	31	27	14	32	42
10	36	41	61	e34	e55	44	37	30	24	13	31	30
11	35	40	432	e34	e50	39	34	29	28	12	32	23
12	34	58	111	e33	e45	36	40	27	26	468	42	20
13	34	48	73	e32	e40	33	136	25	20	106	236	19
14	32	41	84	e32	e38	31	96	25	20	179	59	18
15	111	38	108	e31	e36	32	67	25	74	167	45	18
16	41	36	75	e30	e35	33	51	70	204	61	41	20
17	39	36	293	e31	e33	35	47	31	46	48	36	20
18	46	34	120	e35	e32	38	44	28	42	89	33	871
19	36	114	82	e37	36	50	42	29	32	76	32	118
20	33	183	70	e36	41	65	39	29	27	49	30	66
21	32	66	60	e35	51	103	38	26	24	41	49	54
22	32	55	58	e34	48	64	37	25	24	36	40	47
23	32	49	58	e32	43	49	38	22	27	35	30	42
24	27	48	150	e30	42	46	39	20	20	38	27	39
25	28	59	87	e28	37	46	36	19	19	32	26	37
26	30	46	65	e29	35	44	178	25	30	30	25	35
27	360	43	59	e30	35	44	87	79	19	384	24	33
28	141	118	55	e31	36	41	54	33	17	361	22	152
29	254	134	53	e31	40	37	46	26	24	93	21	225
30	98	63	53	e30	---	36	43	23	18	65	50	86
31	70	---	49	e28	---	43	---	27	---	55	75	---
TOTAL	1973	1819	2672	1188	2317	1417	1615	1044	1110	2571	1475	2211
MEAN	63.6	60.6	86.2	38.3	79.9	45.7	53.8	33.7	37.0	82.9	47.6	73.7
MAX	360	183	432	104	800	103	178	79	204	468	236	871
MIN	27	34	41	28	27	31	34	19	17	12	21	18
CFSM	2.77	2.64	3.75	1.67	3.47	1.99	2.34	1.46	1.61	3.61	2.07	3.20
IN.	3.19	2.94	4.32	1.92	3.75	2.29	2.61	1.69	1.80	4.16	2.39	3.58

**STATISTICS OF MONTHLY MEAN DATA FOR WATER YEARS 1982 - 2004, BY WATER YEAR (WY)**

MEAN	22.9	32.9	47.2	43.3	47.7	62.3	58.6	46.2	33.4	25.3	17.4	24.2
MAX	66.9	60.6	165	140	93.8	171	146	114	108	99.0	47.6	92.8
(WY)	1997	2004	1984	1996	1984	1994	1983	1989	2003	1984	2004	2003
MIN	7.45	7.47	7.94	15.3	11.9	23.4	16.4	22.9	11.0	5.67	5.65	5.47
(WY)	2002	2002	1999	2002	2002	1985	1985	1995	1999	1999	2002	1983

e Estimated.

**SCHUYLKILL RIVER BASIN**

**01472199 WEST BRANCH PERKIOMEN CREEK AT HILLEGASS, PA--Continued**

SUMMARY STATISTICS	FOR 2003 CALENDAR YEAR		FOR 2004 WATER YEAR		WATER YEARS 1982 - 2004	
ANNUAL TOTAL	22746.4		21412			
ANNUAL MEAN	62.3		58.5		38.4	
HIGHEST ANNUAL MEAN					69.5	1984
LOWEST ANNUAL MEAN					19.1	
HIGHEST DAILY MEAN	906	Sep 15	871	Sep 18	1760	Jan 19 1996
LOWEST DAILY MEAN	7.4	Feb 17	12	Jul 11	3.0	Aug 7 1999
ANNUAL SEVEN-DAY MINIMUM	16	Aug 24	14	Jul 5	3.2	Aug 1 1999
MAXIMUM PEAK FLOW			a2420	Sep 18	a3270	Jan 19 1996
MAXIMUM PEAK STAGE			5.76	Sep 18	6.34	Jan 19 1996
INSTANTANEOUS LOW FLOW			12	Jul 6,7,10-12	b2.6	Dec 31 1998
ANNUAL RUNOFF (CFSM)	2.71		2.54		1.67	
ANNUAL RUNOFF (INCHES)	36.79		34.63		22.69	
10 PERCENT EXCEEDS	110		91		74	
50 PERCENT EXCEEDS	45		40		24	
90 PERCENT EXCEEDS	22		24		8.0	

**a** From rating curve extended above 560 ft<sup>3</sup>/s on basis of contracted-opening measurement at gage height 5.51 ft.

**b** Result of freeze-up.