



2004 Water Year SCHUYLKILL RIVER BASIN

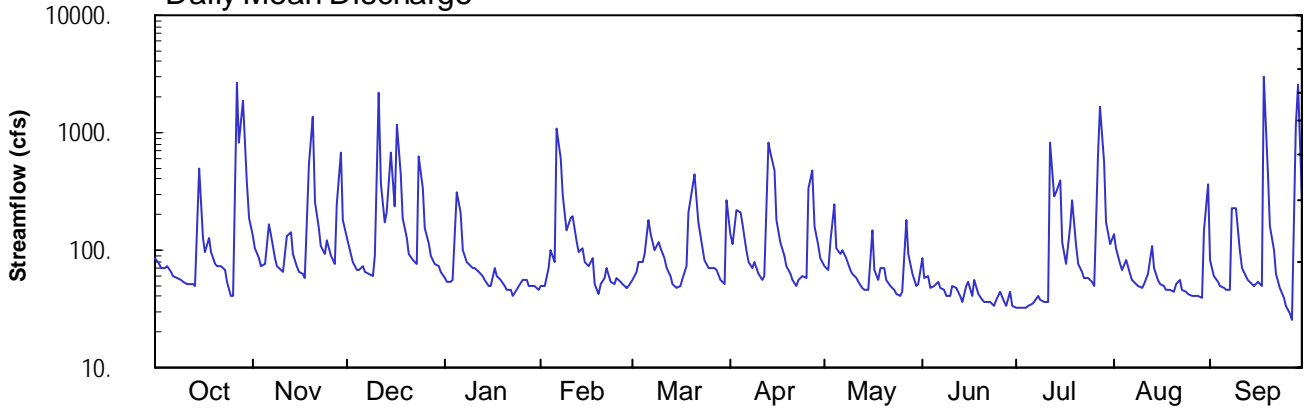
01472810 East Branch Perkiomen Creek near Schwenksville, PA

Latitude: 40° 15 ' 31"
Montgomery County

Longitude: 075° 25 ' 45"
Datum: 150 feet

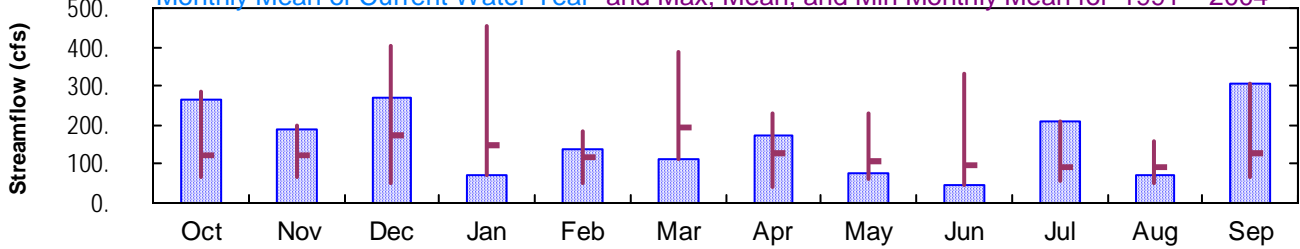
Hydrologic Unit Code: 02040203
Drainage Area: 58.7 mi²

Daily Mean Discharge

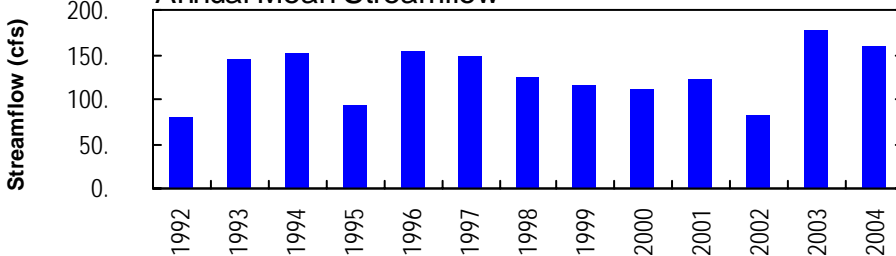


Monthly Statistics

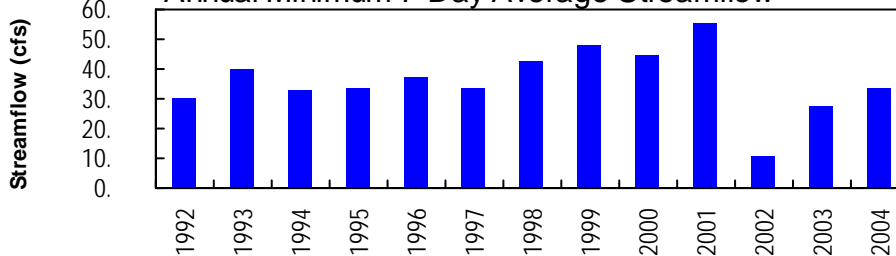
Monthly Mean of Current Water Year and Max, Mean, and Min Monthly Mean for 1991 – 2004



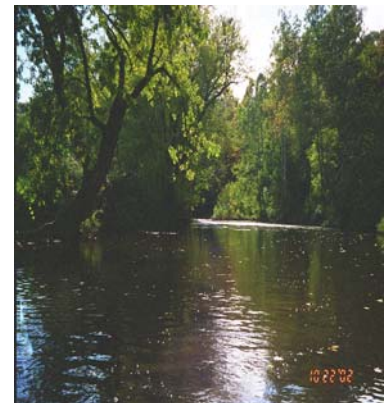
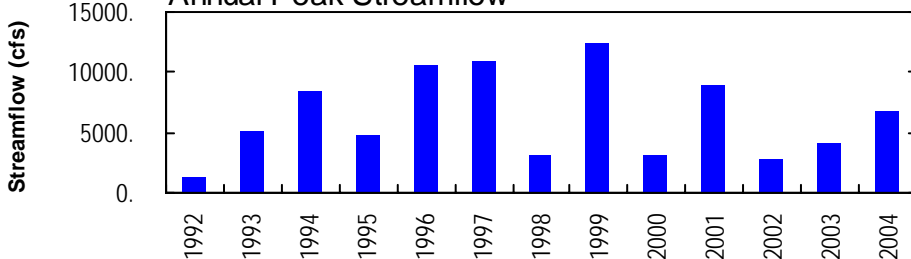
Annual Mean Streamflow



Annual Minimum 7-Day Average Streamflow



Annual Peak Streamflow



SCHUYLKILL RIVER BASIN

01472810 EAST BRANCH PERKIOMEN CREEK NEAR SCHWENKSVILLE, PA

LOCATION.--Lat 40°15'31", long 75°25'45", Montgomery County, Hydrologic Unit 02040203, on left bank 600 ft upstream from Bergey's Mill bridge, and 2.0 mi east of Schwenksville.

DRAINAGE AREA.--58.7 mi², not including distributary.

PERIOD OF RECORD.--January 1991 to current year.

REVISED RECORD.--WDR PA-96-1: 1993-95(P). WDR PA-99-1: 1996, 1997 (M).

GAGE.--Water-stage recorder and crest-stage gage. Elevation of gage is 150 ft above National Geodetic Vertical Datum of 1929, from topographic map.

REMARKS.--Records fair except those for estimated daily discharges, which are poor. Diversion since August 1989 from Delaware River at Point Pleasant to Bradshaw Reservoir (Geddes Creek Basin). Pumpage from reservoir enters stream about 19 mi upstream of gage. Pumpage into the creek was equivalent to an annual mean discharge of 26.5 ft³/s. See station 01472618, Distributary from Bradshaw Reservoir, for pumpage data. Peak flows are unregulated. Several measurements of water temperature were made during the year. Satellite and landline telemetry at station.

PEAK DISCHARGES FOR CURRENT YEAR.--Peak discharges greater than base discharge of 2,500 ft³/s and maximum (*):

Date	Time	Discharge ft ³ /s	Gage Height (ft)	Date	Time	Discharge ft ³ /s	Gage Height (ft)
Oct. 27	1730	4,860	8.97	Feb. 6	2100	Unknown	Ice jam
Oct. 29	0930	3,340	7.56	July 12	1900	2,510	6.64
Nov. 20	0130	3,080	7.30	July 27	2100	3,650	7.87
Dec. 11	1130	3,470	7.69	Sept. 18	0830	6,590	10.35
Dec. 17	1500	2,530	6.67	Sept. 29	0300	*6,820	*10.52

**DISCHARGE, CUBIC FEET PER SECOND, WATER YEAR OCTOBER 2003 TO SEPTEMBER 2004
DAILY MEAN VALUES**

DAY	OCT	NOV	DEC	JAN	FEB	MAR	APR	MAY	JUN	JUL	AUG	SEP
1	85	133	127	59	e50	55	137	74	86	33	138	82
2	76	106	93	54	e50	64	114	69	59	32	105	61
3	70	84	79	54	e70	79	220	122	60	32	77	54
4	70	74	67	56	e100	81	209	246	48	32	69	50
5	72	76	68	313	e80	92	167	106	49	33	81	47
6	64	165	74	208	e1100	180	99	92	54	35	63	46
7	59	137	64	100	e600	136	79	99	48	36	56	46
8	57	87	63	e80	296	100	70	84	45	40	52	227
9	57	72	60	e75	148	115	78	67	41	37	50	230
10	54	68	89	e70	184	103	64	63	40	37	48	101
11	52	64	2190	e70	195	86	55	57	49	36	51	71
12	51	130	361	e65	119	72	60	53	47	830	62	61
13	51	144	173	e60	95	59	809	49	41	292	108	56
14	50	91	213	e55	103	51	679	46	36	314	69	52
15	496	74	683	e50	78	48	479	46	50	394	55	50
16	127	65	240	e50	72	50	177	150	54	116	51	53
17	98	63	1190	e70	87	59	119	67	41	76	49	50
18	129	59	440	e60	51	74	89	57	56	157	46	2970
19	96	543	188	e55	43	210	73	70	43	264	45	446
20	77	1360	128	e50	52	346	63	69	38	111	44	160
21	72	259	94	e45	59	444	55	55	36	76	52	100
22	72	152	82	e45	70	174	49	50	36	65	55	63
23	69	110	75	e40	53	104	55	46	36	59	46	48
24	53	92	636	e45	52	82	60	43	33	58	44	39
25	40	120	332	e50	57	71	58	40	37	54	42	33
26	40	90	152	e55	54	70	330	44	44	50	40	29
27	2640	76	112	e55	51	69	475	179	36	662	40	26
28	834	244	88	e50	47	68	161	93	33	1640	41	1120
29	1890	690	77	e50	50	57	108	62	44	560	40	2510
30	374	179	73	e50	---	51	85	50	34	172	149	279
31	187	---	66	e45	---	261	---	51	---	112	366	---
TOTAL	8162	5607	8377	2184	4066	3511	5276	2399	1354	6445	2234	9160
MEAN	263	187	270	70.5	140	113	176	77.4	45.1	208	72.1	305
MAX	2640	1360	2190	313	1100	444	809	246	86	1640	366	2970
MIN	40	59	60	40	43	48	49	40	33	32	40	26

STATISTICS OF MONTHLY MEAN DATA FOR WATER YEARS 1991 - 2004, BY WATER YEAR (WY)

MEAN	123	125	171	146	116	195	127	107	99.1	90.2	92.7	126
MAX	287	201	405	456	183	388	230	230	330	208	159	305
(WY)	1997	1994	1997	1996	2001	1994	1993	1998	2003	2004	1994	2004
MIN	65.1	66.0	52.1	70.5	49.0	113	43.2	60.9	45.1	56.3	52.5	64.8
(WY)	2002	2002	1996	2004	2002	2004	1992	1999	2004	1999	1997	2002

e Estimated.

SCHUYLKILL RIVER BASIN

01472810 EAST BRANCH PERKIOMEN CREEK NEAR SCHWENKSVILLE, PA--Continued

SUMMARY STATISTICS	FOR 2003 CALENDAR YEAR		FOR 2004 WATER YEAR		WATER YEARS 1991 - 2004	
ANNUAL TOTAL	72113		58775			
ANNUAL MEAN	198		161		128	
HIGHEST ANNUAL MEAN					178	
LOWEST ANNUAL MEAN					80.6	
HIGHEST DAILY MEAN	2640	Oct 27	2970	Sep 18	6020	Jan 19 1996
LOWEST DAILY MEAN	e 20	Jan 27	26	Sep 27	3.5	Sep 25 2002 a
ANNUAL SEVEN-DAY MINIMUM	b 27	Jan 22	33	Jun 30	11	Sep 19 2002
MAXIMUM PEAK FLOW			c 6820	Sep 29	c 12300	Sep 16 1999
MAXIMUM PEAK STAGE			10.52	Sep 29	14.03	Sep 16 1999
10 PERCENT EXCEEDS	446		301		207	
50 PERCENT EXCEEDS	86		69		73	
90 PERCENT EXCEEDS	49		41		48	

a Result of no pumpage from the Delaware River diversion.

b Computed using estimated daily discharges.

c From rating curve extended above 2,840 ft³/s on basis of contracted-opening measurement of peak flow.

e Estimated.