



2004 Water Year LACKAWANNA RIVER BASIN

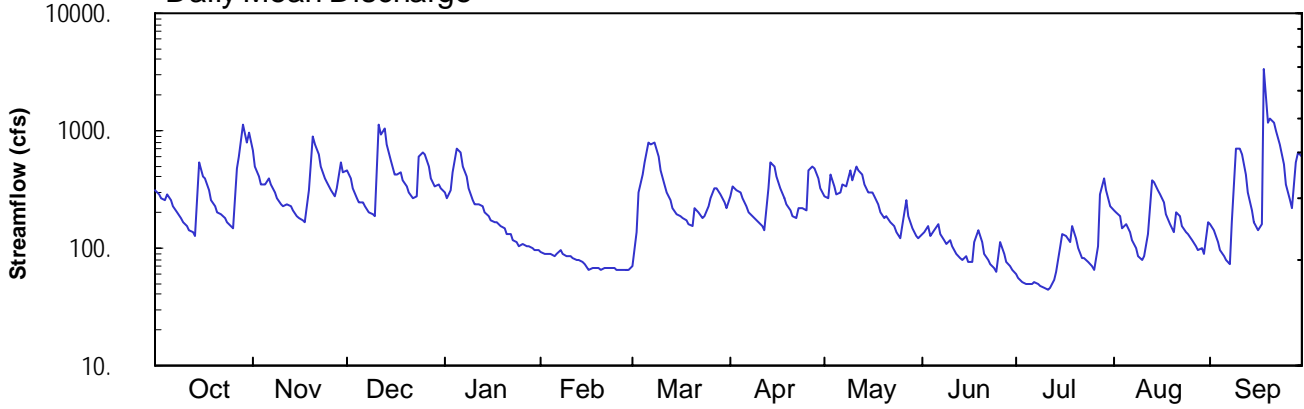
01534500 Lackawanna River at Archbald, PA

Latitude: 41° 30' 16"
Lackawanna County

Longitude: 075° 32' 33"
Datum: 889.33 feet

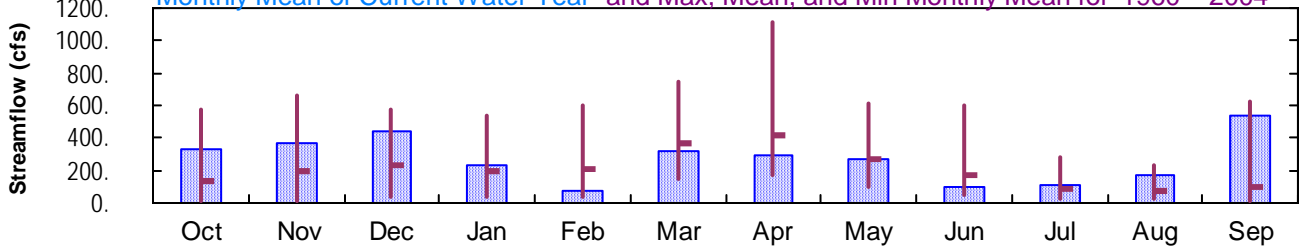
Hydrologic Unit Code: 02050107
Drainage Area: 108. mi²

Daily Mean Discharge

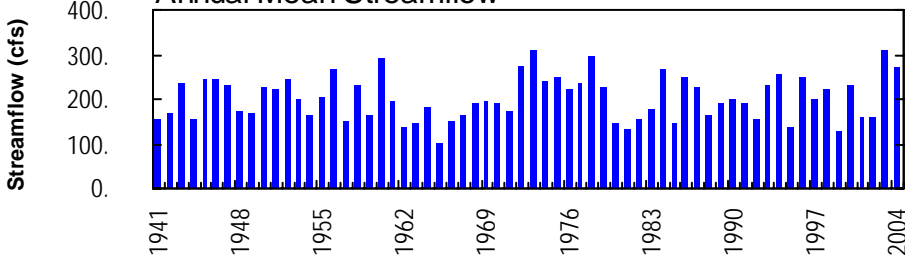


Monthly Statistics

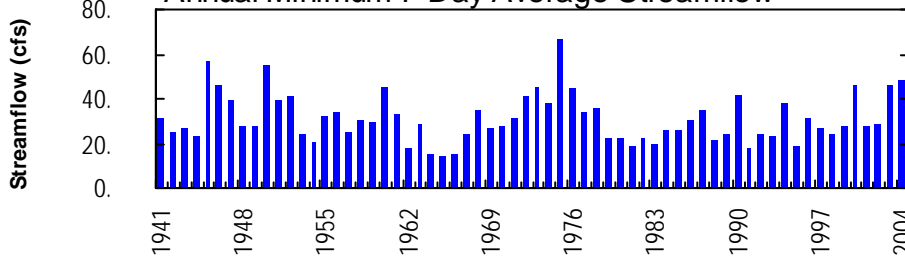
Monthly Mean of Current Water Year and Max, Mean, and Min Monthly Mean for 1960 – 2004



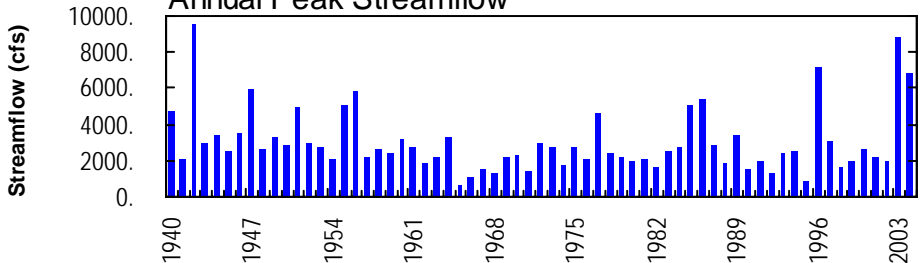
Annual Mean Streamflow



Annual Minimum 7-Day Average Streamflow



Annual Peak Streamflow



LACKAWANNA RIVER BASIN

01534500 LACKAWANNA RIVER AT ARCHBALD, PA

LOCATION.--Lat 41°30'16", long 75°32'33", Lackawanna County, Hydrologic Unit 02050107, on right bank along SR 1012 in Archbald, and 0.5 mi upstream from White Oak Run and Gilmartin Street bridge.

DRAINAGE AREA.--108 mi².

PERIOD OF RECORD.--October 1939 to current year. Prior to February 1940 monthly discharge only, published in WSP 1302.

GAGE.--Water-stage recorder. Datum of gage is 889.33 ft above National Geodetic Vertical Datum of 1929.

REMARKS.--Records good except those for estimated daily discharges, which are poor. Regulation at low flow by mine pumps upstream from station. Flow regulated since December 1959 by Stillwater Dam (station 01534180) about 17 mi upstream. Several measurements of water temperature were made during the year. Satellite and landline telemetry at station.

DISCHARGE, CUBIC FEET PER SECOND, WATER YEAR OCTOBER 2003 TO SEPTEMBER 2004
DAILY MEAN VALUES

DAY	OCT	NOV	DEC	JAN	FEB	MAR	APR	MAY	JUN	JUL	AUG	SEP
1	312	676	463	294	94	72	280	276	133	59	211	160
2	288	504	395	269	90	136	339	262	137	55	203	142
3	260	408	319	314	89	303	309	421	151	51	190	114
4	256	348	269	442	89	426	294	334	127	49	150	95
5	286	353	247	714	85	525	261	287	140	50	158	84
6	252	388	246	640	87	801	224	293	158	50	137	79
7	226	345	223	492	96	767	205	349	132	52	118	73
8	202	301	205	400	89	780	188	337	118	50	101	163
9	183	265	194	326	85	612	176	462	108	48	87	715
10	168	240	187	253	86	452	163	370	117	46	79	698
11	156	228	1140	233	83	351	152	495	103	44	85	617
12	144	237	937	e240	78	300	144	460	90	46	132	425
13	135	230	1020	231	78	255	325	427	83	54	379	293
14	129	206	765	199	76	216	526	348	79	62	365	209
15	531	190	560	185	72	197	493	299	85	105	315	168
16	401	178	423	171	64	184	408	304	75	129	290	144
17	396	175	431	168	68	180	322	271	76	128	242	161
18	311	167	445	168	68	172	265	235	111	113	193	3400
19	257	311	382	157	67	162	241	203	142	151	159	1180
20	224	887	336	146	66	155	207	180	110	123	135	1270
21	205	773	293	134	69	215	189	184	88	100	201	1190
22	192	624	268	131	69	202	179	166	79	83	184	987
23	179	487	276	116	67	181	217	151	74	82	154	766
24	165	388	608	112	68	188	221	136	67	77	137	514
25	154	357	654	105	65	223	207	123	63	69	131	344
26	146	307	631	106	65	265	462	153	114	64	117	257
27	481	276	496	104	65	320	493	254	90	104	105	216
28	609	322	396	105	64	324	479	185	76	286	95	527
29	1120	546	339	101	66	288	395	148	71	392	100	640
30	800	433	343	97	---	246	321	125	64	305	87	598
31	947	---	328	96	---	222	---	119	---	228	167	---
TOTAL	10115	11150	13819	7249	2208	9720	8685	8357	3061	3255	5207	16229
MEAN	326	372	446	234	76.1	314	290	270	102	105	168	541
MAX	1120	887	1140	714	96	801	526	495	158	392	379	3400
MIN	129	167	187	96	64	72	144	119	63	44	79	73

e Estimated.

LACKAWANNA RIVER BASIN

01534500 LACKAWANNA RIVER AT ARCHBALD, PA--Continued

STATISTICS OF MONTHLY MEAN DATA FOR WATER YEARS 1960 - 2004, BY WATER YEAR (WY) (SINCE REGULATION)

	OCT	NOV	DEC	JAN	FEB	MAR	APR	MAY	JUN	JUL	AUG	SEP
MEAN	130	194	227	192	213	366	420	264	173	90.5	70.5	102
MAX	578	661	581	541	598	741	1111	610	605	278	234	622
(WY)	1978	1973	1974	1996	1981	1977	1993	1989	1972	1984	1994	2003
MIN	15.8	17.4	42.6	38.2	40.4	143	174	99.1	47.9	25.6	25.0	18.4
(WY)	1965	1965	1999	1981	1980	1981	1988	2001	1962	1965	1966	1964

SUMMARY STATISTICS FOR 2003 CALENDAR YEAR FOR 2004 WATER YEAR WATER YEARS 1960 - 2004

ANNUAL TOTAL	123470	99055	
ANNUAL MEAN	338	271	203
HIGHEST ANNUAL MEAN			313
LOWEST ANNUAL MEAN			101
HIGHEST DAILY MEAN	3240	Sep 4	3400
LOWEST DAILY MEAN	62	Aug 28	44
ANNUAL SEVEN-DAY MINIMUM	71	Aug 23	48
MAXIMUM PEAK FLOW			a6770
MAXIMUM PEAK STAGE			9.07
10 PERCENT EXCEEDS	724	526	461
50 PERCENT EXCEEDS	234	200	123
90 PERCENT EXCEEDS	92	73	35

STATISTICS OF MONTHLY MEAN DATA FOR WATER YEARS 1940 - 1959, BY WATER YEAR (WY) (PRIOR TO REGULATION)

	OCT	NOV	DEC	JAN	FEB	MAR	APR	MAY	JUN	JUL	AUG	SEP
MEAN	113	209	222	203	181	377	455	279	145	112	92.3	78.9
MAX	657	430	420	380	371	691	1113	553	284	373	443	187
(WY)	1956	1946	1951	1949	1951	1945	1940	1947	1946	1947	1955	1945
MIN	27.2	50.1	53.3	56.8	65.2	188	121	85.6	63.4	38.4	31.8	28.8
(WY)	1942	1942	1947	1948	1940	1941	1946	1941	1955	1955	1953	1953

SUMMARY STATISTICS WATER YEARS 1940 - 1959

ANNUAL MEAN	203
HIGHEST ANNUAL MEAN	266
LOWEST ANNUAL MEAN	153
HIGHEST DAILY MEAN	4840
LOWEST DAILY MEAN	17
ANNUAL SEVEN-DAY MINIMUM	20
MAXIMUM PEAK FLOW	a9510
MAXIMUM PEAK STAGE	10.58
INSTANTANEOUS LOW FLOW	3.0
ANNUAL RUNOFF (CFSM)	1.88
ANNUAL RUNOFF (INCHES)	25.54
10 PERCENT EXCEEDS	439
50 PERCENT EXCEEDS	123
90 PERCENT EXCEEDS	42

a From rating curve extended above 1,900 ft³/s on basis of slope-area measurement of peak flow.