



2004 Water Year FISHING CREEK BASIN

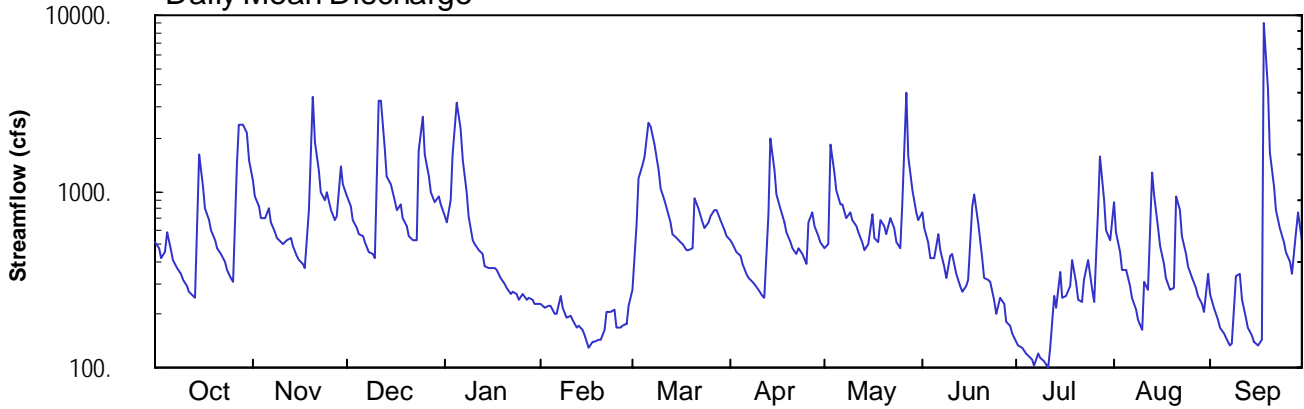
01539000 Fishing Creek near Bloomsburg, PA

Latitude: 41°04'41"
Columbia County

Longitude: 076°25'53"
Datum: 543.84 feet

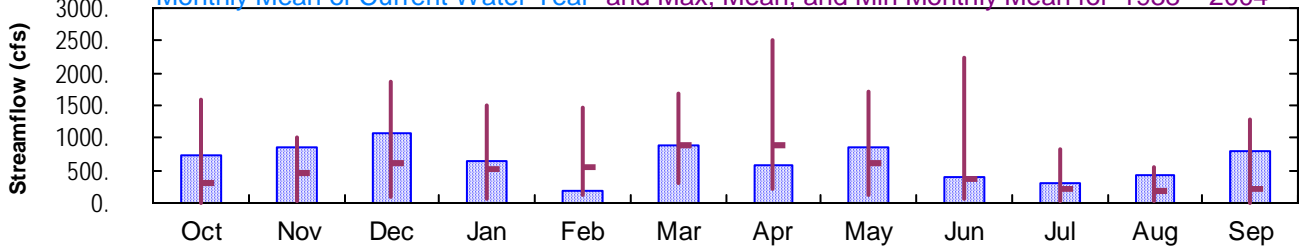
Hydrologic Unit Code: 02050107
Drainage Area: 274. mi²

Daily Mean Discharge

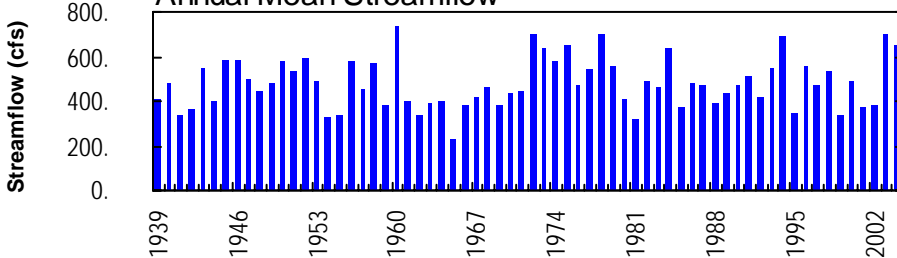


Monthly Statistics

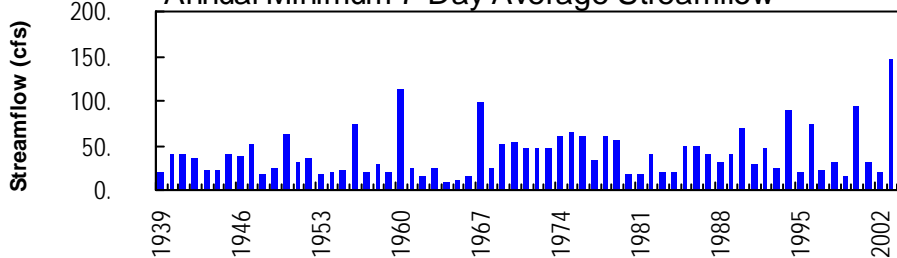
Monthly Mean of Current Water Year and Max, Mean, and Min Monthly Mean for 1938 – 2004



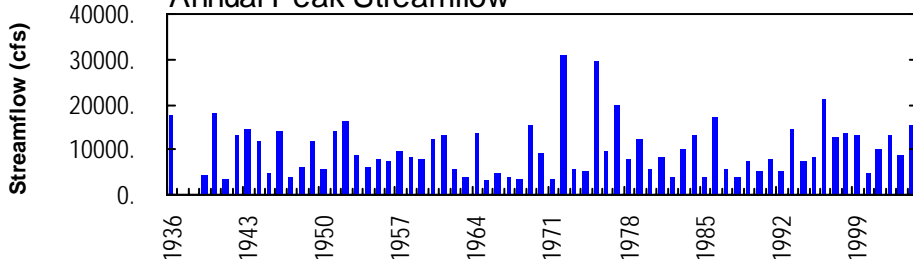
Annual Mean Streamflow



Annual Minimum 7-Day Average Streamflow



Annual Peak Streamflow



FISHING CREEK BASIN

01539000 FISHING CREEK NEAR BLOOMSBURG, PA

LOCATION.--Lat 41°04'41", long 76°25'53", Columbia County, Hydrologic Unit 02050107, on left bank 10 ft downstream from Bowmans Mill bridge on SR 4034, 0.8 mi downstream from Green Creek, 0.9 mi west of Orangeville, and 5.5 mi north of Bloomsburg.

DRAINAGE AREA.--274 mi².

PERIOD OF RECORD.--June 1938 to current year.

REVISED RECORDS.--WSP 1202: 1939-42, 1948(P), 1950.

GAGE.--Water-stage recorder. Datum of gage is 543.84 ft above National Geodetic Vertical Datum of 1929.

REMARKS.--Records good except those for estimated daily discharges, which are poor. Several measurements of water temperature were made during the year. Satellite telemetry at station.

PEAK DISCHARGES FOR CURRENT YEAR.--Peak discharges greater than a base discharge of 4,000 ft³/s and maximum (*):

Date	Time	Discharge ft ³ /s	Gage Height (ft)	Date	Time	Discharge ft ³ /s	Gage Height (ft)
Nov. 20	0600	4,350	6.22	May 27	0530	6,320	7.30
Dec. 11	1800	5,830	7.05	Sept. 18	1430	*15,200	*10.97

**DISCHARGE, CUBIC FEET PER SECOND, WATER YEAR OCTOBER 2003 TO SEPTEMBER 2004
DAILY MEAN VALUES**

DAY	OCT	NOV	DEC	JAN	FEB	MAR	APR	MAY	JUN	JUL	AUG	SEP
1	513	1140	945	715	e230	277	532	472	754	141	874	265
2	475	939	813	667	e220	647	497	505	612	134	590	217
3	420	815	691	886	221	1170	447	1850	518	131	447	187
4	452	711	614	1610	225	1410	428	1280	421	119	362	168
5	590	704	575	3170	200	1590	388	1000	421	117	357	156
6	467	808	561	2270	204	2460	343	835	573	110	293	147
7	407	674	511	1480	253	2350	319	852	463	104	246	135
8	371	592	451	e1000	e220	1830	303	704	376	119	212	136
9	342	539	440	e730	e190	1320	295	764	323	114	187	327
10	314	512	423	e530	196	1050	273	680	433	108	162	344
11	290	501	3270	e500	186	885	254	637	446	100	308	240
12	272	535	3260	e460	168	802	246	579	343	126	273	194
13	255	544	1740	e440	172	669	751	517	288	254	1290	170
14	246	484	e1200	e380	165	576	1990	460	270	218	951	151
15	1640	435	e1100	e370	153	542	1310	503	288	349	630	141
16	1070	403	e900	e370	e130	514	965	739	313	247	484	133
17	811	385	e780	e370	e140	496	795	545	816	257	388	144
18	682	364	845	e360	e140	464	675	520	968	289	320	8990
19	597	780	712	e320	143	459	584	684	655	406	278	3820
20	526	3460	630	e300	145	473	511	629	417	303	286	1650
21	479	1910	561	e280	163	911	476	567	319	240	930	1070
22	440	e1300	522	e260	206	810	439	712	315	238	788	787
23	397	e1000	523	269	205	660	471	613	307	311	551	619
24	356	900	1690	263	211	625	445	514	243	412	444	519
25	321	980	2680	e240	e170	660	385	474	204	285	373	448
26	305	779	1640	e260	e170	717	672	827	246	235	319	394
27	1440	686	1210	e240	171	786	764	3670	228	790	282	342
28	2380	718	994	e250	179	773	633	1590	184	1580	258	577
29	2410	1370	859	e240	227	679	561	1010	171	878	230	764
30	2140	1090	933	e230	---	604	513	764	154	597	206	532
31	1480	---	847	e230	---	551	---	684	---	524	337	---
TOTAL	22888	26058	32920	19690	5403	27760	17265	26180	12069	9836	13656	23767
MEAN	738	869	1062	635	186	895	576	845	402	317	441	792
MAX	2410	3460	3270	3170	253	2460	1990	3670	968	1580	1290	8990
MIN	246	364	423	230	130	277	246	460	154	100	162	133
CFSM	2.69	3.17	3.88	2.32	0.68	3.27	2.10	3.08	1.47	1.16	1.61	2.89
IN.	3.11	3.54	4.47	2.67	0.73	3.77	2.34	3.55	1.64	1.34	1.85	3.23

STATISTICS OF MONTHLY MEAN DATA FOR WATER YEARS 1938 - 2004, BY WATER YEAR (WY)

MEAN	303	459	610	512	560	897	889	616	352	202	169	226
MAX	1589	995	1867	1509	1456	1680	2518	1712	2230	835	548	1286
(WY)	1977	1946	1997	1979	1981	1977	1993	1989	1972	1947	2000	1975
MIN	12.5	16.4	87.4	53.5	128	293	221	127	74.3	30.3	15.5	9.96
(WY)	1965	1965	1999	1981	1940	1981	1946	1941	1939	1964	1964	1964

e Estimated.

FISHING CREEK BASIN

01539000 FISHING CREEK NEAR BLOOMSBURG, PA--Continued

SUMMARY STATISTICS	FOR 2003 CALENDAR YEAR		FOR 2004 WATER YEAR		WATER YEARS 1938 - 2004	
ANNUAL TOTAL	266550		237492			
ANNUAL MEAN	730		649		482	
HIGHEST ANNUAL MEAN					739	
LOWEST ANNUAL MEAN					229	
HIGHEST DAILY MEAN	6500	Mar 21	8990	Sep 18	18500	Jun 23 1972
LOWEST DAILY MEAN	132	Jul 21	100	Jul 11	8.4	Sep 12 1964
ANNUAL SEVEN-DAY MINIMUM	154	Jul 15	110	Jul 5	8.7	Sep 12 1964
MAXIMUM PEAK FLOW			a15200	Sep 18	a30900	Jun 22 1972
MAXIMUM PEAK STAGE			10.97	Sep 18	b15.18	Jun 22 1972
INSTANTANEOUS LOW FLOW					7.6	Jul 19 1939
ANNUAL RUNOFF (CFSM)	2.67		2.37		1.76	
ANNUAL RUNOFF (INCHES)	36.19		32.24		23.91	
10 PERCENT EXCEEDS	1440		1280		1080	
50 PERCENT EXCEEDS	522		474		277	
90 PERCENT EXCEEDS	202		171		54	

a From rating curve extended above 9,500 ft³/s on basis of contracted-opening measurement at gage height 12.08 ft.

b From floodmark in gage.