



2004 Water Year

WEST BRANCH SUSQUEHANNA RIVER BASIN

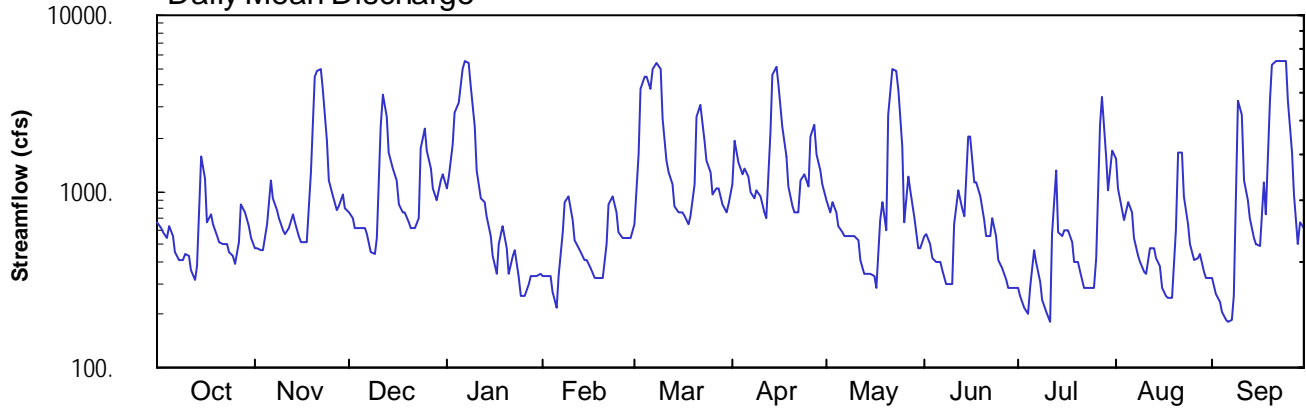
01541200 WB Susquehanna River near Curwensville, PA

Latitude: 40° 57' 41"
Clearfield County

Longitude: 078° 31' 10"
Datum: 1124.52 feet

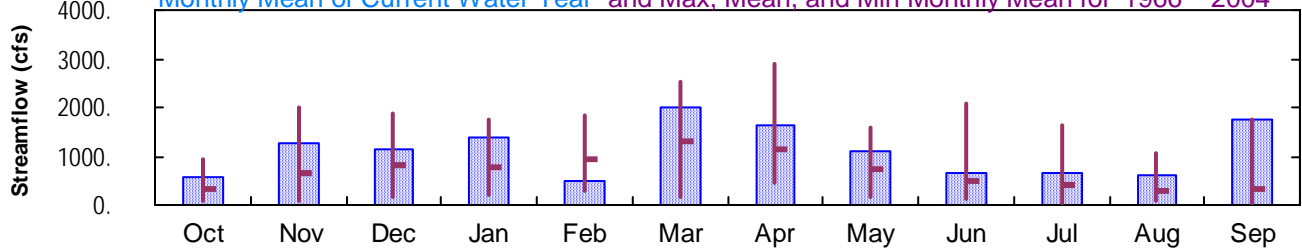
Hydrologic Unit Code: 02050201
Drainage Area: 367. mi²

Daily Mean Discharge

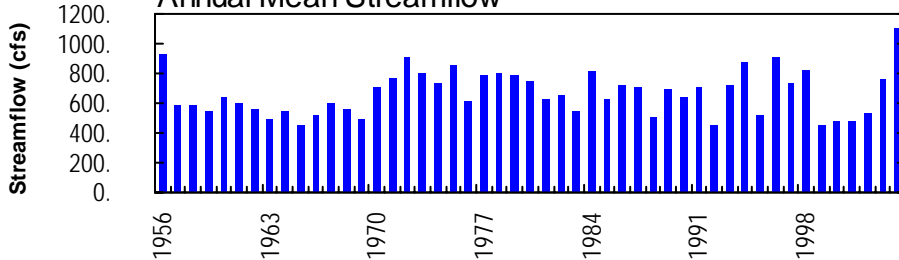


Monthly Statistics

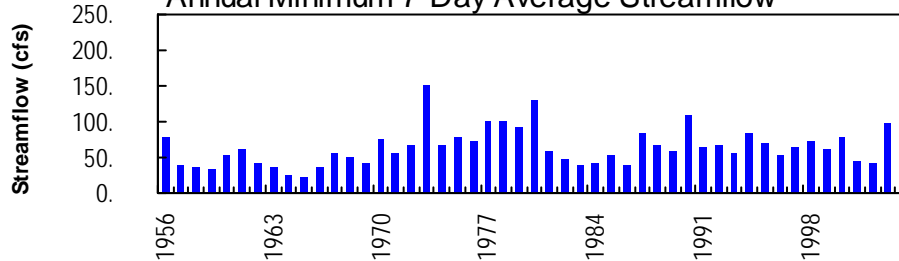
Monthly Mean of Current Water Year and Max, Mean, and Min Monthly Mean for 1966 – 2004



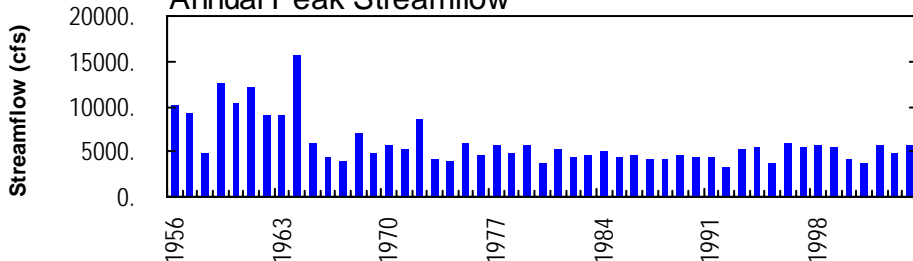
Annual Mean Streamflow



Annual Minimum 7-Day Average Streamflow



Annual Peak Streamflow



WEST BRANCH SUSQUEHANNA RIVER BASIN

01541200 WEST BRANCH SUSQUEHANNA RIVER AT CURWENSVILLE, PA

LOCATION.--Lat 40°57'41", long 78°31'10", Clearfield County, Hydrologic Unit 02050201, on left bank 30 ft downstream from bridge on State Highway 453, 0.8 mi downstream from Curwensville Dam, 1.1 mi south of Curwensville, and 1.8 mi upstream from Anderson Creek.

DRAINAGE AREA.--367 mi².

PERIOD OF RECORD.--October 1955 to current year.

GAGE.--Water-stage recorder. Datum of gage is 1,124.52 ft above National Geodetic Vertical Datum of 1929. Prior to Aug. 24, 1956, nonrecording gage and crest-stage gage 30 ft upstream at same datum.

REMARKS.--No estimated daily discharges. Records fair except those below 100 ft³/s, which are poor. Flow regulated since November 1965 by Curwensville Dam (station 01541180). Several measurements of water temperature were made during the year. Satellite telemetry at station.

DISCHARGE, CUBIC FEET PER SECOND, WATER YEAR OCTOBER 2003 TO SEPTEMBER 2004
DAILY MEAN VALUES

DAY	OCT	NOV	DEC	JAN	FEB	MAR	APR	MAY	JUN	JUL	AUG	SEP
1	661	480	755	1050	334	648	1100	883	557	280	1550	322
2	612	472	702	1220	332	1620	1930	770	579	254	1040	265
3	585	466	619	1850	333	3790	1470	868	499	217	780	236
4	540	459	618	2780	267	4420	1250	760	424	201	690	207
5	636	656	618	3210	216	4510	1330	635	394	289	868	187
6	561	1160	619	4950	334	3780	1220	582	392	466	758	180
7	447	912	577	5460	594	4980	997	556	356	393	540	186
8	406	785	452	5420	866	5300	914	559	302	303	431	256
9	406	699	438	4040	938	5020	1010	559	299	241	398	3300
10	446	609	541	2350	683	2620	937	560	299	205	347	2720
11	427	575	2330	1320	530	1490	754	532	651	180	341	1160
12	354	623	3570	921	480	1280	702	407	1020	570	476	899
13	318	744	2640	873	450	1090	2170	335	804	1310	471	698
14	377	664	1640	720	406	825	4620	335	726	582	423	549
15	1580	551	1360	560	406	766	5110	337	2040	563	372	504
16	1190	520	1140	424	363	770	4050	334	2030	609	282	492
17	673	521	852	335	325	726	2320	281	1110	605	252	1120
18	743	520	763	502	325	657	1560	688	1130	515	251	748
19	656	1270	763	638	325	732	1070	870	939	396	251	3230
20	554	4440	670	478	325	1100	814	600	686	400	597	5190
21	521	4820	620	335	508	2620	770	2710	552	348	1670	5430
22	501	4900	619	430	834	3130	767	4980	559	287	1680	5500
23	500	3840	699	463	934	1970	1160	4790	697	284	944	5520
24	454	1940	1760	334	770	1480	1240	3690	561	283	651	5470
25	431	1140	2300	258	593	1260	1050	1800	406	283	498	3270
26	392	946	1710	258	547	967	2070	663	364	422	412	1670
27	517	779	1340	302	547	1050	2380	1210	315	2380	414	956
28	845	819	1040	335	547	1050	1640	1010	284	3440	439	497
29	761	968	900	335	547	851	1330	696	284	1560	353	672
30	640	810	1140	335	---	766	1080	476	283	1000	322	625
31	543	---	1260	337	---	840	---	476	---	1720	322	---
TOTAL	18277	38088	35055	42823	14659	62108	48815	33952	19542	20586	18823	52059
MEAN	590	1270	1131	1381	505	2003	1627	1095	651	664	607	1735
MAX	1580	4900	3570	5460	938	5300	5110	4980	2040	3440	1680	5520
MIN	318	459	438	258	216	648	702	281	283	180	251	180

WEST BRANCH SUSQUEHANNA RIVER BASIN

01541200 WEST BRANCH SUSQUEHANNA RIVER AT CURWENSVILLE, PA--Continued

STATISTICS OF MONTHLY MEAN DATA FOR WATER YEARS 1966 - 2004, BY WATER YEAR (WY) (SINCE REGULATION)

	OCT	NOV	DEC	JAN	FEB	MAR	APR	MAY	JUN	JUL	AUG	SEP
MEAN	340	655	833	760	943	1322	1145	751	504	397	266	340
MAX	950	2010	1865	1749	1847	2532	2911	1593	2074	1650	1053	1735
(WY)	1980	1998	1973	1996	1986	1979	1993	1966	1972	1977	2003	2004
MIN	77.4	82.5	183	209	305	154	437	182	119	54.7	63.8	57.8
(WY)	1986	1999	1999	1977	1980	1969	1976	1986	1999	1966	1966	1968

SUMMARY STATISTICS FOR 2003 CALENDAR YEAR FOR 2004 WATER YEAR WATER YEARS 1966 - 2004

ANNUAL TOTAL		329330		404787								
ANNUAL MEAN		902		1106						686		
HIGHEST ANNUAL MEAN										1106		2004
LOWEST ANNUAL MEAN										450		1999
HIGHEST DAILY MEAN				4900	Nov 22		5520	Sep 23		8420	Jun 26	1972
LOWEST DAILY MEAN				187	Jul 3		180	Jul 11a		19	Aug 16, 17	1966
ANNUAL SEVEN-DAY MINIMUM				220	Jul 1		217	Sep 2		36	Aug 11	1966
MAXIMUM PEAK FLOW							5700	Jan 8b		8590	Jun 25	1972
MAXIMUM PEAK STAGE							8.50	Jan 8b		11.40	Jun 25	1972
10 PERCENT EXCEEDS				1890			2660			1610		
50 PERCENT EXCEEDS				629			656			399		
90 PERCENT EXCEEDS				265			311			100		

STATISTICS OF MONTHLY MEAN DATA FOR WATER YEARS 1956 - 1965, BY WATER YEAR (WY) (PRIOR TO REGULATION)

	OCT	NOV	DEC	JAN	FEB	MAR	APR	MAY	JUN	JUL	AUG	SEP
MEAN	158	329	501	685	889	1446	1323	783	310	321	265	137
MAX	363	610	1152	1210	1792	2661	1968	1521	656	1487	1068	322
(WY)	1956	1956	1957	1965	1956	1964	1957	1956	1956	1956	1956	1956
MIN	29.5	80.1	83.6	126	188	690	625	351	89.4	48.9	49.0	33.2
(WY)	1965	1958	1961	1956	1963	1957	1963	1965	1965	1965	1965	1964

SUMMARY STATISTICS WATER YEARS 1956 - 1965

ANNUAL MEAN	594											
HIGHEST ANNUAL MEAN	938					1956						
LOWEST ANNUAL MEAN	454					1965						
HIGHEST DAILY MEAN	14000					Mar 10	1964					
LOWEST DAILY MEAN	21					Nov 13, 15, 16	1964					
ANNUAL SEVEN-DAY MINIMUM	22					Nov 10	1964					
MAXIMUM PEAK FLOW	15700					Mar 10	1964					
MAXIMUM PEAK STAGE	14.19					Mar 10	1964					
ANNUAL RUNOFF (CFSM)	1.62											
ANNUAL RUNOFF (INCHES)	22.00											
10 PERCENT EXCEEDS			1450									
50 PERCENT EXCEEDS			270									
90 PERCENT EXCEEDS			56									

a Also Sept. 6.

b Also Mar. 8.