



2004 Water Year

### WEST BRANCH SUSQUEHANNA RIVER BASIN

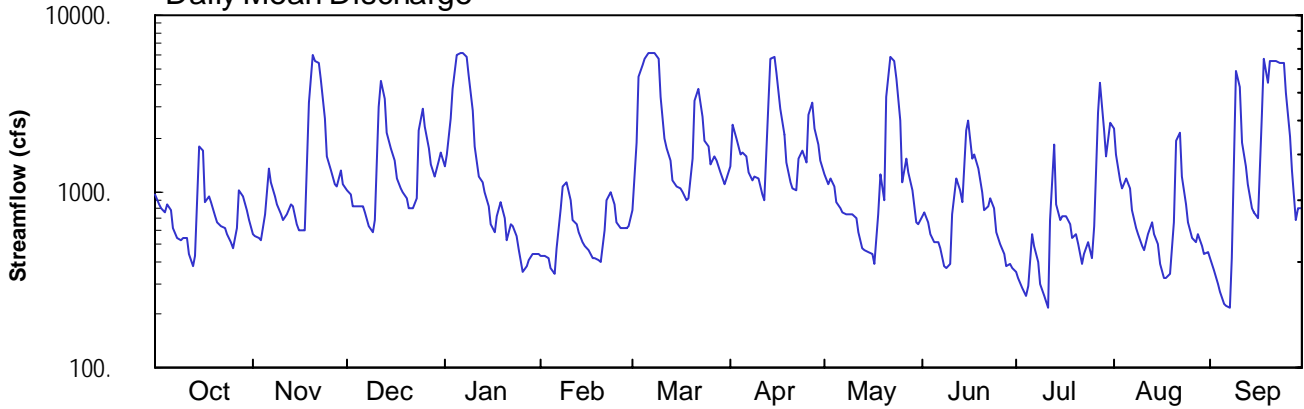
### 01541303 West Branch Susquehanna River at Hyde, PA

Latitude: 41°00'16"  
Clearfield County

Longitude: 078°27'25"  
Datum: 1093.90 feet

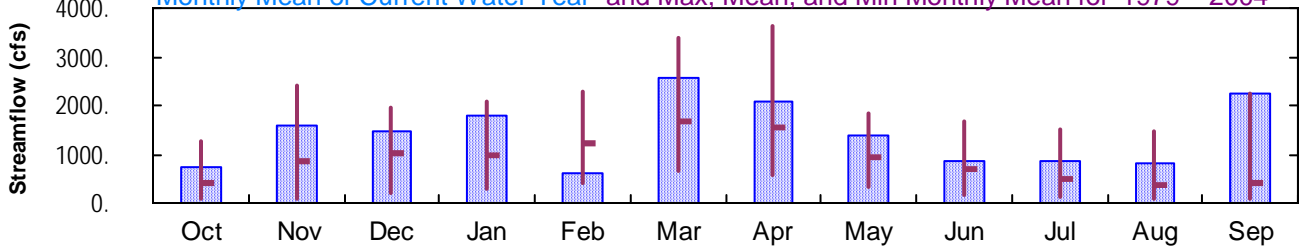
Hydrologic Unit Code: 02050201  
Drainage Area: 474. mi<sup>2</sup>

#### Daily Mean Discharge

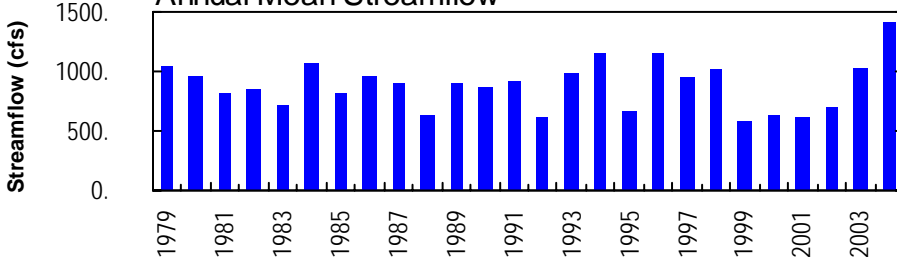


#### Monthly Statistics

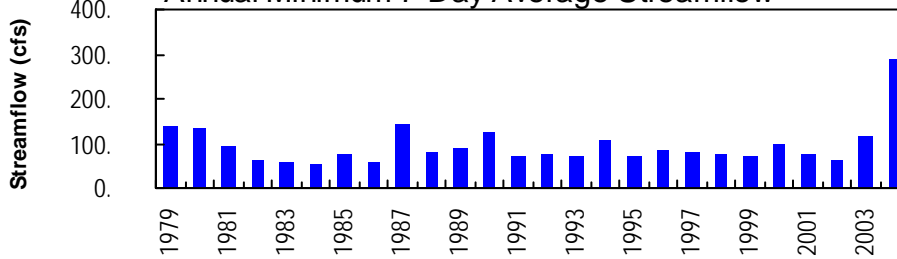
Monthly Mean of Current Water Year and Max, Mean, and Min Monthly Mean for 1979 – 2004



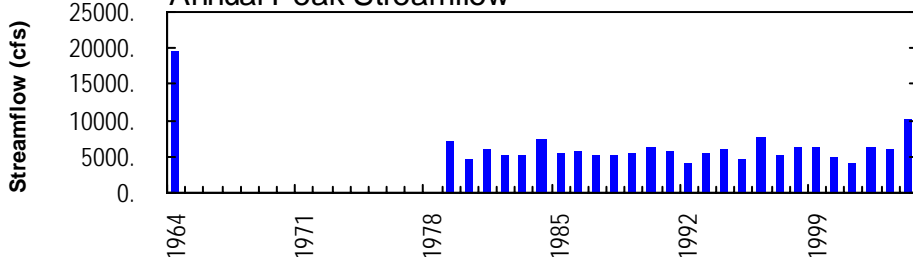
#### Annual Mean Streamflow



#### Annual Minimum 7-Day Average Streamflow



#### Annual Peak Streamflow



## WEST BRANCH SUSQUEHANNA RIVER BASIN

## 01541303 WEST BRANCH SUSQUEHANNA RIVER AT HYDE, PA

**LOCATION.**--Lat 41°00'16", long 78°27'25", Clearfield County, Hydrologic Unit 02050201, on right bank 60 ft downstream from bridge at intersection of SR 1001 and State Highway 879 at Hyde.

**DRAINAGE AREA.**--474 mi<sup>2</sup>.

**PERIOD OF RECORD.**--October 1978 to current year.

**GAGE.**--Water-stage recorder. Datum of gage is 1,093.90 ft above National Geodetic Vertical Datum of 1929.

**REMARKS.**--Records good except those for estimated daily discharges, which are poor. Flow regulated since November 1965 by Curwensville Dam (station 01541180) about 5 mi upstream. Several measurements of water temperature were made during the year. Satellite and landline telemetry at station.

**EXTREMES OUTSIDE PERIOD OF RECORD.**--Flood of Mar. 10, 1964, reached a stage of 18.1 ft, from floodmarks, discharge, about 19,400 ft<sup>3</sup>/s.

DISCHARGE, CUBIC FEET PER SECOND, WATER YEAR OCTOBER 2003 TO SEPTEMBER 2004  
DAILY MEAN VALUES

DAY	OCT	NOV	DEC	JAN	FEB	MAR	APR	MAY	JUN	JUL	AUG	SEP
1	958	573	1000	1400	e430	782	1400	1260	714	352	2270	416
2	839	562	955	1630	e430	1910	2390	1080	757	324	1620	355
3	797	547	826	2580	e420	4410	1970	1180	674	280	1160	297
4	766	526	813	3860	e370	5250	1610	1060	569	252	1040	270
5	841	748	817	5970	e340	5660	1670	861	519	294	1180	233
6	774	1360	821	6050	e480	6030	1560	805	513	568	1050	224
7	612	1130	759	6060	e800	6140	1280	763	472	492	775	218
8	536	933	633	5840	e1070	6030	1160	746	376	399	610	423
9	523	849	594	4630	e1120	5630	1230	734	364	300	571	4870
10	543	736	684	2850	e900	3420	1170	742	386	256	484	3900
11	540	692	3010	1790	e690	1990	953	708	733	219	470	1910
12	445	748	4230	1210	e650	1730	895	590	1180	685	578	1380
13	378	854	3310	1130	e590	1500	3160	473	1010	1860	672	1110
14	433	814	2180	e990	e510	1150	5640	463	864	853	565	808
15	1800	656	1740	e830	e490	1060	5740	452	2240	683	502	769
16	1680	609	1490	e650	e460	1050	4710	441	2530	730	385	698
17	870	609	1190	e580	e420	985	2930	391	1540	713	324	2710
18	936	600	1030	e730	e420	885	2090	734	1620	649	319	5680
19	856	3150	998	e870	e410	917	1460	1230	1360	544	337	4170
20	721	5990	903	e710	e400	1520	1130	896	979	566	670	5510
21	666	5510	809	e530	e600	3280	1030	3470	778	508	1960	5520
22	633	5340	796	e650	e900	3850	1030	5860	823	389	2140	5480
23	616	4370	908	e640	e1000	2640	1550	5450	922	436	1230	5420
24	564	2610	2220	e550	e850	1950	1690	4380	794	518	844	5350
25	513	1570	2930	e470	e670	1820	1460	2520	582	422	664	3670
26	474	1300	2300	e350	e620	1430	2710	1130	504	638	538	2040
27	623	1110	1740	e380	e620	1560	3150	1550	442	2830	512	1300
28	1020	1060	1440	e410	e620	1510	2270	1290	380	4170	574	683
29	939	1320	1200	e440	e630	1270	1830	1010	385	2210	488	802
30	786	1100	1510	e440	---	1110	1490	660	364	1570	436	806
31	680	---	1640	e440	---	1180	---	659	---	2450	448	---
TOTAL	23362	47976	45476	55660	17910	79649	62358	43588	25374	27160	25416	67022
MEAN	754	1599	1467	1795	618	2569	2079	1406	846	876	820	2234
MAX	1800	5990	4230	6060	1120	6140	5740	5860	2530	4170	2270	5680
MIN	378	526	594	350	340	782	895	391	364	219	319	218

## STATISTICS OF MONTHLY MEAN DATA FOR WATER YEARS 1979 - 2004, BY WATER YEAR (WY)

	388	874	1009	985	1215	1678	1539	943	698	500	376	426
MEAN	388	874	1009	985	1215	1678	1539	943	698	500	376	426
MAX	1264	2425	1944	2092	2302	3377	3648	1831	1663	1497	1487	2234
(WY)	1980	1998	1991	1996	1986	1979	1993	1989	1989	1996	2003	2004
MIN	97.0	97.2	216	289	392	647	590	307	154	130	98.7	78.1
(WY)	1983	1999	1999	2001	1980	1990	1997	1986	1999	1999	1988	1995

e Estimated.

## WEST BRANCH SUSQUEHANNA RIVER BASIN

## 01541303 WEST BRANCH SUSQUEHANNA RIVER AT HYDE, PA--Continued

SUMMARY STATISTICS	FOR 2003 CALENDAR YEAR		FOR 2004 WATER YEAR		WATER YEARS 1979 - 2004	
ANNUAL TOTAL	439401		520951			
ANNUAL MEAN	1204		1423		884	
HIGHEST ANNUAL MEAN					1423	2004
LOWEST ANNUAL MEAN					576	1999
HIGHEST DAILY MEAN	5990	Nov 20	6140	Mar 7	6850	Mar 8 1979
LOWEST DAILY MEAN	236	Jul 3	218	Sep 7	46	Sep 14 1982
ANNUAL SEVEN-DAY MINIMUM	280	Jul 1	288	Sep 1	53	Oct 6 1983
MAXIMUM PEAK FLOW			a10100	Sep 17	a10100	Sep 17 2004
MAXIMUM PEAK STAGE			12.63	Sep 17	12.63	Sep 17 2004
10 PERCENT EXCEEDS	2610		3530		2080	
50 PERCENT EXCEEDS	846		852		529	
90 PERCENT EXCEEDS	370		419		123	

a From rating curve extended above 6,000 ft<sup>3</sup>/s.