



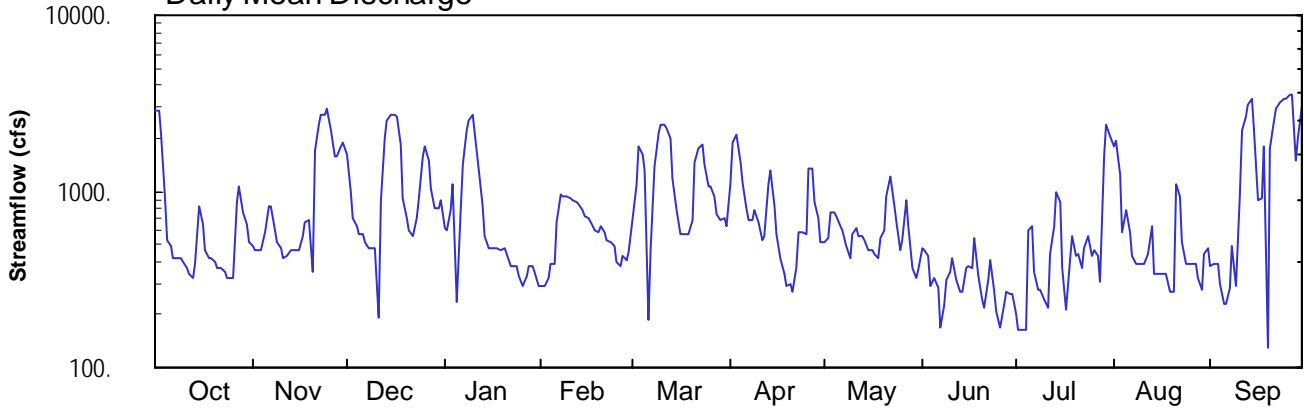
2004 Water Year
 WEST BRANCH SUSQUEHANNA RIVER BASIN
 01547500 Bald Eagle Creek at Blanchard, PA

Latitude: 41°03'06"
 Centre County

Longitude: 077°36'17"
 Datum: 579.79 feet

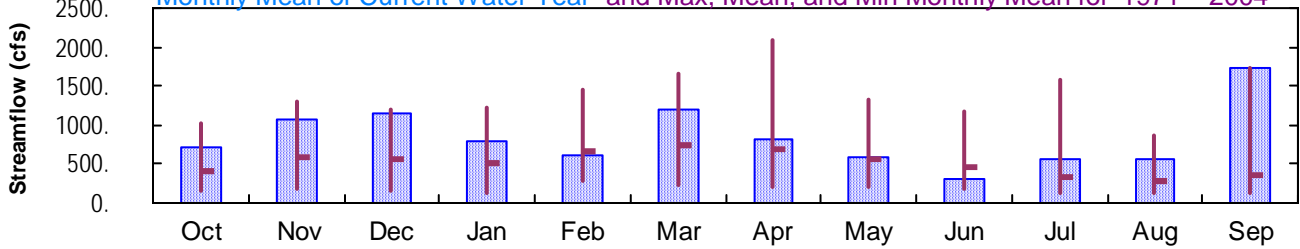
Hydrologic Unit Code: 02050204
 Drainage Area: 339. mi²

Daily Mean Discharge

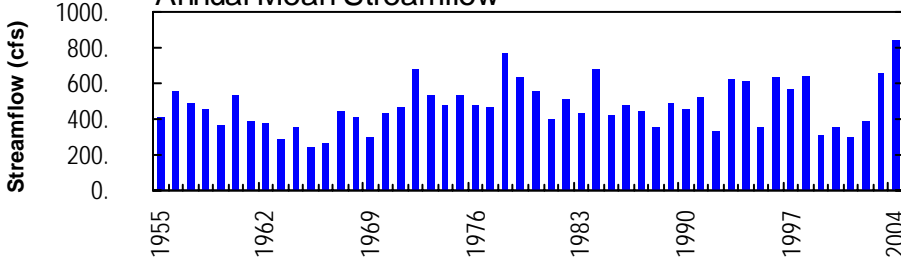


Monthly Statistics

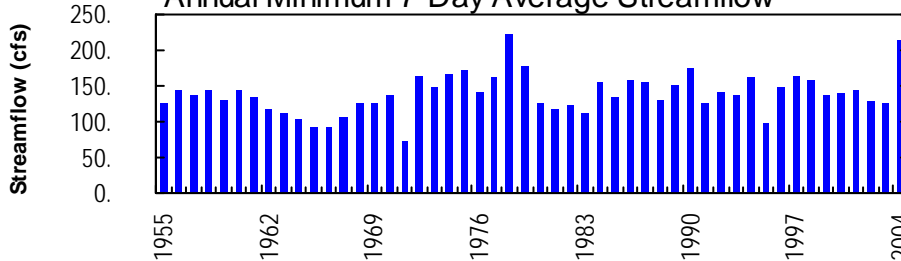
Monthly Mean of Current Water Year and Max, Mean, and Min Monthly Mean for 1971 – 2004



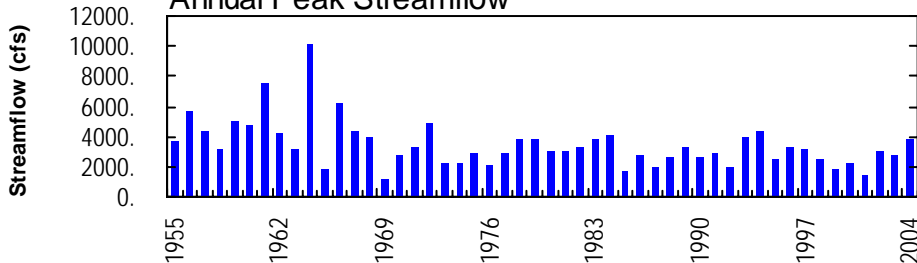
Annual Mean Streamflow



Annual Minimum 7-Day Average Streamflow



Annual Peak Streamflow



WEST BRANCH SUSQUEHANNA RIVER BASIN

01547500 BALD EAGLE CREEK AT BLANCHARD, PA

LOCATION.--Lat 41°03'06", long 77°36'17", Centre County, Hydrologic Unit 02050204, on left bank 0.4 mi downstream from Foster Joseph Sayers Dam, 0.7 mi upstream from Marsh Creek, and 0.9 mi south of Blanchard.

DRAINAGE AREA.--339 mi².

PERIOD OF RECORD.--May 1954 to current year. Prior to October 1967, published as North Bald Eagle Creek at Blanchard.

REVISED RECORDS.--WSP 1903: 1956(M).

GAGE.--Water-stage recorder. Datum of gage is 579.79 ft above National Geodetic Vertical Datum of 1929.

REMARKS.--No estimated daily discharges. Records good. Flow regulated since March 1971 by Foster Joseph Sayers Dam (station 01547480). Several measurements of water temperature were made during the year. Satellite telemetry at station.

DISCHARGE, CUBIC FEET PER SECOND, WATER YEAR OCTOBER 2003 TO SEPTEMBER 2004
DAILY MEAN VALUES

DAY	OCT	NOV	DEC	JAN	FEB	MAR	APR	MAY	JUN	JUL	AUG	SEP
1	2850	490	1600	611	290	679	1110	517	471	202	1770	380
2	2860	470	998	598	290	1100	1910	543	466	164	1930	382
3	2090	470	709	779	321	1800	2090	764	430	164	1230	382
4	945	470	642	1090	383	1620	1460	760	290	164	594	301
5	523	582	566	238	382	1330	1110	715	325	596	774	228
6	485	816	565	758	669	185	804	635	281	640	594	228
7	419	814	517	1440	961	483	688	606	167	345	426	284
8	421	595	482	2200	944	1380	690	489	222	275	382	485
9	422	517	482	2520	928	2140	782	417	314	275	387	291
10	401	481	482	2730	911	2370	675	570	350	243	388	932
11	366	417	192	2140	893	2360	525	617	423	217	388	2190
12	340	433	899	1310	875	2280	550	559	314	438	436	2670
13	321	463	2000	820	853	1980	1090	559	267	635	628	3100
14	382	464	2530	552	776	1190	1310	525	267	987	339	3350
15	830	464	2710	476	721	771	812	470	371	856	339	2250
16	655	464	2740	474	703	571	568	470	373	367	339	891
17	460	556	2650	476	637	567	414	441	368	210	339	922
18	423	662	1830	475	600	565	336	423	538	418	339	1810
19	423	694	909	470	587	565	290	539	330	557	271	131
20	399	346	700	472	640	683	298	602	241	434	271	1730
21	365	1710	595	438	589	1470	272	926	220	435	1100	2520
22	366	2370	551	380	529	1730	364	1210	310	371	929	2930
23	349	2730	705	377	518	1830	584	853	407	481	511	3140
24	318	2750	893	378	486	1410	590	665	278	556	386	3330
25	319	2930	1590	330	394	1070	568	468	208	434	388	3370
26	319	2210	1790	289	381	1070	1340	526	167	464	388	3510
27	869	1590	1500	328	426	941	1350	886	231	425	388	3520
28	1070	1580	1050	377	411	745	865	631	266	307	320	1480
29	764	1810	808	379	454	695	699	372	264	1560	278	2060
30	659	1890	794	349	---	710	517	319	265	2380	437	2990
31	517	---	884	289	---	640	---	354	---	2020	472	---
TOTAL	21930	32238	35363	24543	17552	36930	24661	18431	9424	17620	17761	51787
MEAN	707	1075	1141	792	605	1191	822	595	314	568	573	1726
MAX	2860	2930	2740	2730	961	2370	2090	1210	538	2380	1930	3520
MIN	318	346	192	238	290	185	272	319	167	164	271	131

WEST BRANCH SUSQUEHANNA RIVER BASIN

01547500 BALD EAGLE CREEK AT BLANCHARD, PA--Continued

STATISTICS OF MONTHLY MEAN DATA FOR WATER YEARS 1971 - 2004, BY WATER YEAR (WY) (SINCE REGULATION)

	OCT	NOV	DEC	JAN	FEB	MAR	APR	MAY	JUN	JUL	AUG	SEP
MEAN	402	577	572	519	651	744	681	568	457	322	281	366
MAX	1012	1291	1211	1213	1450	1664	2095	1328	1184	1580	867	1726
(WY)	1980	1978	1997	1996	1984	1979	1993	1978	1972	1972	1984	2004
MIN	159	188	160	133	275	238	208	203	167	139	140	120
(WY)	2002	1988	1999	1981	1993	1990	1976	1995	1999	1999	1995	1995

SUMMARY STATISTICS FOR 2003 CALENDAR YEAR FOR 2004 WATER YEAR WATER YEARS 1971 - 2004

ANNUAL TOTAL	283543.0			308240			511					
ANNUAL MEAN	777			842			842					
HIGHEST ANNUAL MEAN							300					
LOWEST ANNUAL MEAN							2004					
HIGHEST DAILY MEAN	2930			Nov 25			3520			Sep 27		
LOWEST DAILY MEAN	6.0			Mar 21			131			Sep 19		
ANNUAL SEVEN-DAY MINIMUM	184			Apr 30			213			Jun 28		
MAXIMUM PEAK FLOW							3760			Sep 28		
MAXIMUM PEAK STAGE							7.91			Sep 28		
INSTANTANEOUS LOW FLOW										9.37		
10 PERCENT EXCEEDS	1720			2030			1060					
50 PERCENT EXCEEDS	528			556			331					
90 PERCENT EXCEEDS	249			290			161					

STATISTICS OF MONTHLY MEAN DATA FOR WATER YEARS 1954 - 1970, BY WATER YEAR (WY) (PRIOR TO REGULATION)

	OCT	NOV	DEC	JAN	FEB	MAR	APR	MAY	JUN	JUL	AUG	SEP
MEAN	224	287	330	318	506	855	797	547	289	212	201	178
MAX	534	557	686	547	909	1376	1392	1053	561	478	623	437
(WY)	1956	1960	1957	1960	1956	1964	1957	1960	1968	1956	1956	1956
MIN	105	102	109	161	158	304	318	289	137	105	100	99.8
(WY)	1965	1965	1966	1966	1963	1969	1968	1955	1965	1965	1966	1965

SUMMARY STATISTICS WATER YEARS 1954 - 1970

ANNUAL MEAN	395											
HIGHEST ANNUAL MEAN	555			1956								
LOWEST ANNUAL MEAN	247			1965								
HIGHEST DAILY MEAN	7010			Mar 10			1964					
LOWEST DAILY MEAN	90			Sep 11, 13			1966					
ANNUAL SEVEN-DAY MINIMUM	93			Sep 7			1966					
MAXIMUM PEAK FLOW	b10100			Mar 10			1964					
MAXIMUM PEAK STAGE	11.59			Mar 10			1964					
INSTANTANEOUS LOW FLOW	.00			Jun 16			1970c					
ANNUAL RUNOFF (CFSM)	1.16											
ANNUAL RUNOFF (INCHES)	15.82											
10 PERCENT EXCEEDS	834											
50 PERCENT EXCEEDS	235											
90 PERCENT EXCEEDS	124											

a Also Mar. 31 and Apr. 1.

b From rating curve extended above 4,100 ft³/s.

c No flow parts of June 16, Nov. 10, 1970, due to construction of dam; May 12, 18, 19, 1976; Mar. 6, 1979, result of shutoff at dam.