



# 2004 Water Year JUNIATA RIVER BASIN

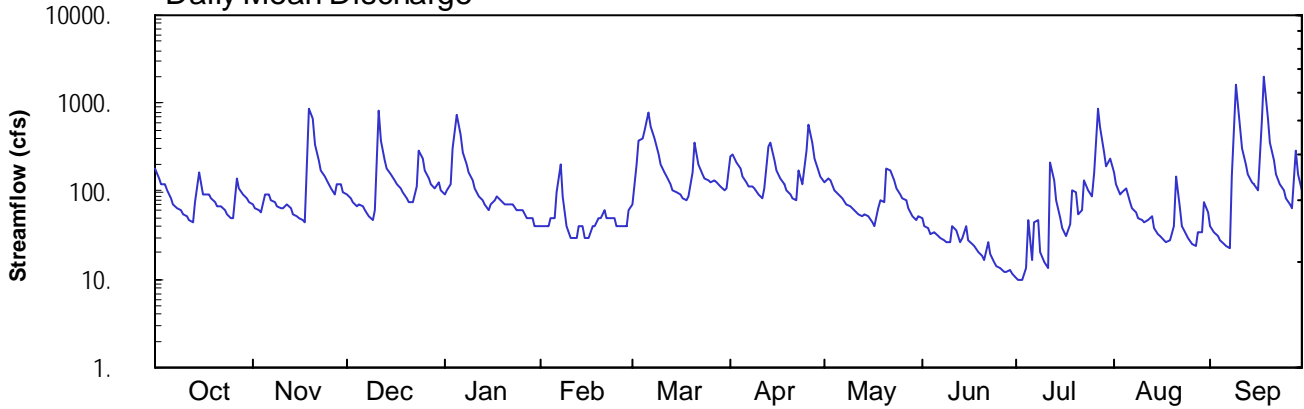
## 01557500 Bald Eagle Creek at Tyrone, PA

Latitude: 40° 41' 01"  
Blair County

Longitude: 078° 14' 02"  
Datum: 921.80 feet

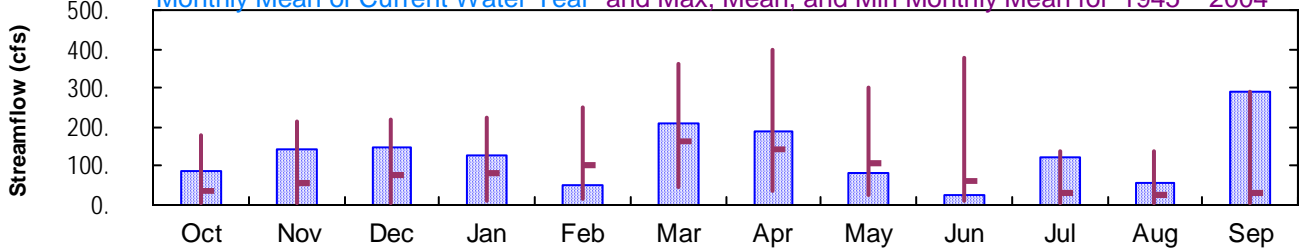
Hydrologic Unit Code: 02050302  
Drainage Area: 44.1 mi<sup>2</sup>

### Daily Mean Discharge

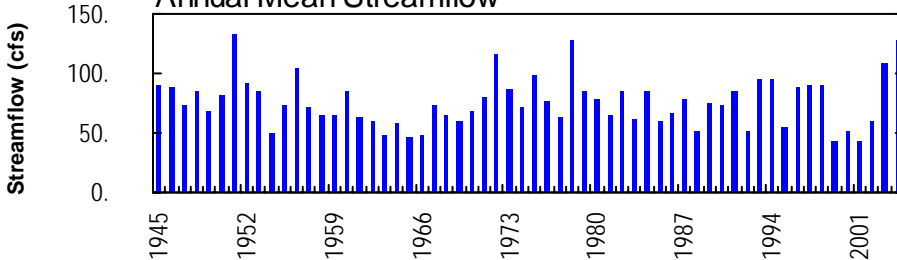


### Monthly Statistics

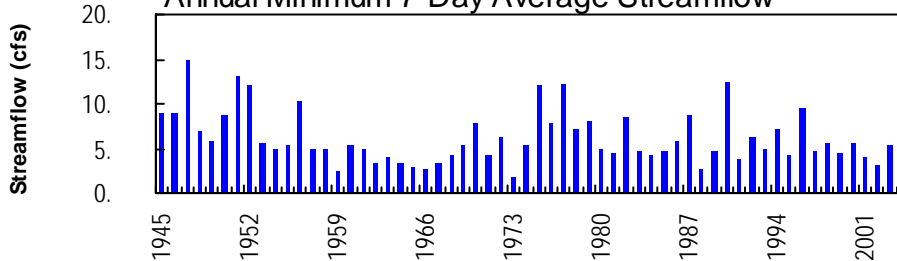
Monthly Mean of Current Water Year and Max, Mean, and Min Monthly Mean for 1945 – 2004



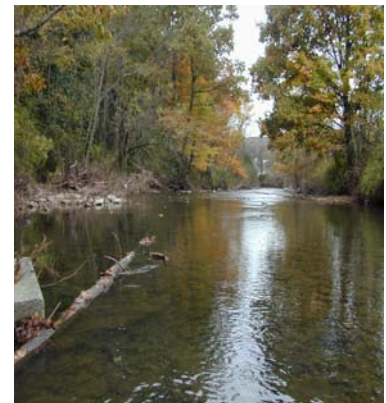
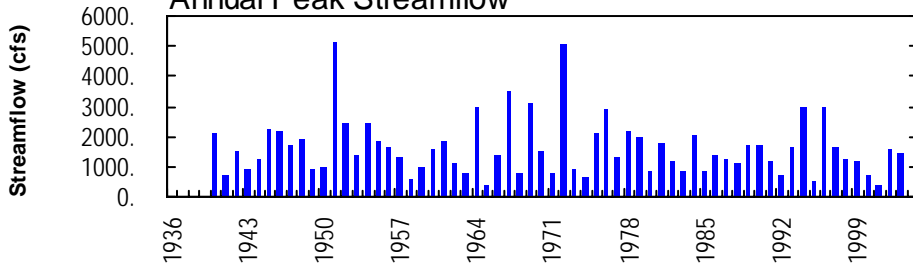
### Annual Mean Streamflow



### Annual Minimum 7-Day Average Streamflow



### Annual Peak Streamflow



**JUNIATA RIVER BASIN**

**01557500 BALD EAGLE CREEK AT TYRONE, PA**

**LOCATION.**--Lat 40°41'01", long 78°14'02", Blair County, Hydrologic Unit 02050302, on left bank 0.2 mi upstream from highway bridge on SR 220 at Tyrone, 0.2 mi upstream from Laurel Run, and 1.3 mi upstream from mouth.

**DRAINAGE AREA.**--44.1 mi<sup>2</sup>.

**PERIOD OF RECORD.**--October 1944 to current year. Prior to October 1967, published as South Bald Eagle Creek at Tyrone.

**REVISED RECORDS.**--WSP 1903: 1954(M). WDR PA-75-2: 1974.

**GAGE.**--Water-stage recorder. Datum of gage is 921.80 ft above National Geodetic Vertical Datum of 1929. Oct. 1, 1944, to Nov. 15, 1950, water-stage recorder, and Nov. 16, 1950, to Nov. 30, 1952, nonrecording gage at site 0.5 mi downstream at datum 17.99 ft lower.

**REMARKS.**--Records good except those for estimated daily discharges, which are poor. Prior to Nov. 30, 1952, daily discharges were affected by West Virginia Pulp and Paper Company diversion. Several measurements of water temperature were made during the year. Satellite telemetry at station.

**EXTREMES OUTSIDE PERIOD OF RECORD.**--Maximum stage known, about 15 ft, Mar. 17 or 18, 1936, site and datum in use prior to Dec. 1, 1952.

**PEAK DISCHARGES FOR CURRENT YEAR.**--Peak discharges greater than a base discharge of 940 ft<sup>3</sup>/s and maximum (\*):

Date	Time	Discharge ft <sup>3</sup> /s	Gage Height (ft)	Date	Time	Discharge ft <sup>3</sup> /s	Gage Height (ft)
Nov. 19	1430	1,870	4.17	Sept. 9	0500	2,960	5.16
Dec. 11	0830	1,140	3.27	Sept. 18	0200	*3,660	*5.70
July 27	1515	1,150	3.29				

DISCHARGE, CUBIC FEET PER SECOND, WATER YEAR OCTOBER 2003 TO SEPTEMBER 2004  
DAILY MEAN VALUES

DAY	OCT	NOV	DEC	JAN	FEB	MAR	APR	MAY	JUN	JUL	AUG	SEP
1	181	71	94	91	e40	e70	254	125	50	11	164	40
2	144	65	85	105	e40	e200	263	141	41	10	118	34
3	119	62	75	120	e40	376	214	135	38	9.6	95	31
4	121	58	68	300	e50	387	186	102	33	14	100	28
5	101	94	70	760	e50	478	150	95	35	47	106	26
6	83	93	68	435	e100	800	127	87	32	17	75	23
7	72	80	61	274	e200	541	114	81	29	44	65	22
8	65	73	e52	202	e90	394	116	73	29	48	57	150
9	60	67	e48	164	e40	268	109	66	26	21	51	1650
10	55	63	e60	e130	e30	199	91	63	26	16	47	560
11	51	64	827	e110	e30	165	81	56	40	14	44	304
12	48	73	374	e90	e30	146	108	54	36	214	47	206
13	45	65	226	e80	e40	119	327	53	27	133	53	156
14	75	56	183	e70	e40	103	352	55	29	79	38	126
15	160	52	156	e60	e30	97	224	52	40	49	33	119
16	93	49	132	e70	e30	91	170	44	28	38	31	101
17	90	48	120	e80	e40	84	142	40	26	31	28	650
18	92	44	109	e90	e40	78	122	63	24	43	27	2040
19	81	873	96	e80	e50	87	105	80	20	103	28	685
20	73	665	85	e70	e50	161	94	75	18	99	40	352
21	69	334	76	e70	e60	362	84	183	16	56	147	224
22	67	221	74	e70	e50	203	80	171	27	62	64	159
23	60	170	112	e70	e50	158	175	133	19	133	40	121
24	55	149	287	e60	e50	139	121	110	16	102	33	100
25	50	130	238	e60	e40	135	286	93	14	86	29	85
26	50	107	173	e60	e40	127	578	84	14	168	26	73
27	137	95	140	e50	e40	130	363	78	12	887	24	64
28	107	118	119	e50	e40	124	237	63	12	533	35	283
29	95	119	107	e50	e60	114	177	53	13	273	34	156
30	84	98	127	e40	---	105	145	46	11	187	75	100
31	77	---	102	e40	---	106	---	53	---	230	59	---
TOTAL	2660	4256	4544	4001	1490	6547	5595	2607	781	3757.6	1813	8668
MEAN	85.8	142	147	129	51.4	211	186	84.1	26.0	121	58.5	289
MAX	181	873	827	760	200	800	578	183	50	887	164	2040
MIN	45	44	48	40	30	70	80	40	11	9.6	24	22
CFSM	1.95	3.22	3.32	2.93	1.17	4.79	4.23	1.91	0.59	2.75	1.33	6.55
IN.	2.24	3.59	3.83	3.37	1.26	5.52	4.72	2.20	0.66	3.17	1.53	7.31

**STATISTICS OF MONTHLY MEAN DATA FOR WATER YEARS 1945 - 2004, BY WATER YEAR (WY)**

MEAN	33.6	56.9	76.0	79.9	102	165	145	108	63.7	31.8	23.0	31.3
MAX	178	216	217	226	251	364	399	304	377	138	140	289
(WY)	1991	1951	1973	1952	1981	1945	1993	1978	1972	1956	2003	2004
MIN	4.10	5.95	6.43	10.9	15.9	48.1	34.0	23.8	11.9	5.41	4.15	3.59
(WY)	1964	1954	1966	1981	1963	1990	1946	1976	1999	1965	1966	1965

e Estimated.

**JUNIATA RIVER BASIN**

**01557500 BALD EAGLE CREEK AT TYRONE, PA--Continued**

<b>SUMMARY STATISTICS</b>	<b>FOR 2003 CALENDAR YEAR</b>		<b>FOR 2004 WATER YEAR</b>		<b>WATER YEARS 1945 - 2004</b>	
ANNUAL TOTAL	47003		46719.6			
ANNUAL MEAN	129		128		76.3	
HIGHEST ANNUAL MEAN					133	1951
LOWEST ANNUAL MEAN					42.8	1999
HIGHEST DAILY MEAN	873	Nov 19	2040	Sep 18	2800	Jun 23 1972
LOWEST DAILY MEAN	12	Jul 30,31	9.6	Jul 3	1.4	Sep 13 1973
ANNUAL SEVEN-DAY MINIMUM	14	Jul 25	11	Jun 27	1.7	Sep 7 1973
MAXIMUM PEAK FLOW			<b>a</b> 3660	Sep 18	<b>a</b> 5140	Nov 25 1950
MAXIMUM PEAK STAGE			5.70	Sep 18	<b>b</b> 7.50	Nov 25 1950
INSTANTANEOUS LOW FLOW			9.2	Jul 2-4	1.4	Sep 12 1973
ANNUAL RUNOFF (CFSM)	2.92		2.89		1.73	
ANNUAL RUNOFF (INCHES)	39.65		39.41		23.50	
10 PERCENT EXCEEDS	285		243		174	
50 PERCENT EXCEEDS	83		80		42	
90 PERCENT EXCEEDS	31		29		7.6	

**a** From rating curve extended above 2,100 ft<sup>3</sup>/s on basis of contracted-opening measurement of peak flow.  
**b** From floodmark, site and datum then in use.