



# 2004 Water Year YELLOW BREECHES CREEK BASIN

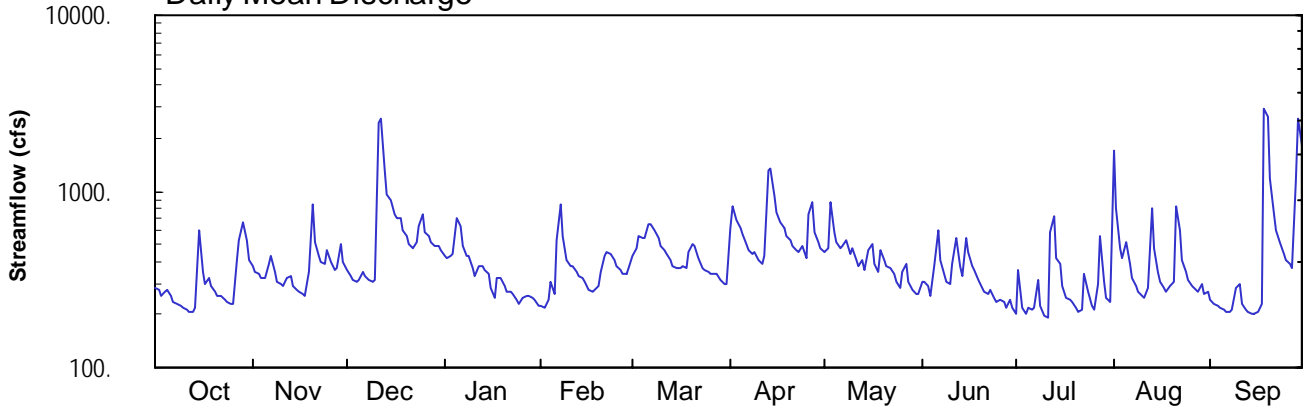
## 01571500 Yellow Breeches Creek near Camp Hill, PA

Latitude: 40° 13 ' 29"  
Cumberland County

Longitude: 076° 53 ' 54"  
Datum: 307.49 feet

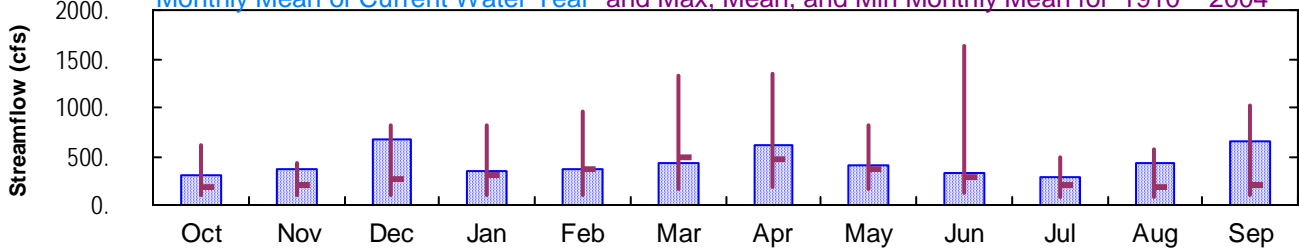
Hydrologic Unit Code: 02050305  
Drainage Area: 216. mi<sup>2</sup>

### Daily Mean Discharge

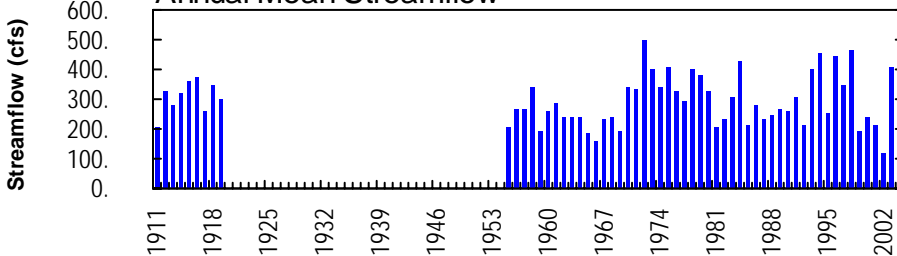


### Monthly Statistics

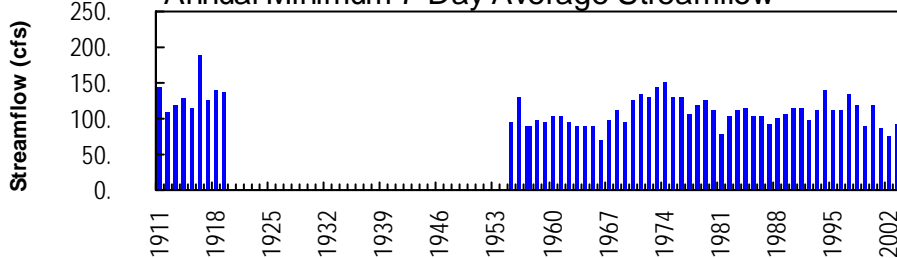
Monthly Mean of Current Water Year and Max, Mean, and Min Monthly Mean for 1910 – 2004



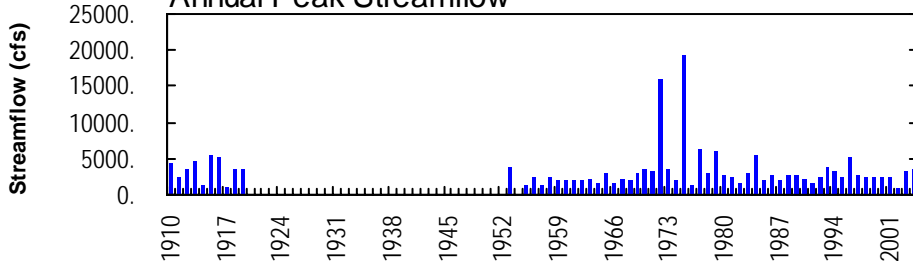
### Annual Mean Streamflow



### Annual Minimum 7-Day Average Streamflow



### Annual Peak Streamflow



01571500--Yellow Breeches Creek near Camp Hill

**YELLOW BRECHES CREEK BASIN**

**01571500 YELLOW BRECHES CREEK NEAR CAMP HILL, PA**

**LOCATION.**--Lat 40°13'29", long 76°53'54", Cumberland County, Hydrologic Unit 02050305, on left bank 50 ft downstream from single-span highway bridge on Green Lane Drive, 150 ft downstream from Olmsted Mill dam, 1.0 mi southeast of Camp Hill, and 3.1 mi upstream from mouth.

**DRAINAGE AREA.**--216 mi<sup>2</sup>.

**PERIOD OF RECORD.**--April 1909 to December 1919, July 1954 to current year. Prior to January 1910 monthly discharge only, published in WSP 1302. Prior to June 1954, published as "at Olmsteds Mill".

**REVISED RECORDS.**--WSP 1302: 1910, 1912-13, 1914(M), 1916.

**GAGE.**--Water-stage recorder. Datum of gage is 307.49 ft above National Geodetic Vertical Datum of 1929. March 1909 to December 1919, nonrecording gage at site 50 ft upstream at same datum.

**REMARKS.**--Records good. The Mechanicsburg Water Co. diverts water about 4 mi upstream from station for municipal supply. Diversion for the year was equivalent to a mean daily discharge of 2.9 ft<sup>3</sup>/s. Several measurements of water temperature were made during the year. Satellite and landline telemetry at station.

**EXTREMES OUTSIDE PERIOD OF RECORD.**--Flood of July 22, 1953, reached a stage of 9.4 ft, from floodmarks, discharge, about 3,940 ft<sup>3</sup>/s.

**PEAK DISCHARGES FOR CURRENT YEAR.**--Peak discharges greater than a base discharge of 1,250 ft<sup>3</sup>/s and maximum (\*):

Date	Time	Discharge ft <sup>3</sup> /s	Gage Height (ft)	Date	Time	Discharge ft <sup>3</sup> /s	Gage Height (ft)
Dec. 11	1545	3,380	8.49	Aug. 1	1445	2,770	7.44
Apr. 14	0045	1,600	4.94	Sept. 18	1715	*3,600	*a8.78
July 12	2330	1,400	4.50	Sept. 29	2315	2,900	7.68

a From floodmark.

DISCHARGE, CUBIC FEET PER SECOND, WATER YEAR OCTOBER 2003 TO SEPTEMBER 2004  
DAILY MEAN VALUES

DAY	OCT	NOV	DEC	JAN	FEB	MAR	APR	MAY	JUN	JUL	AUG	SEP
1	283	372	358	426	222	433	611	453	305	204	1700	240
2	273	351	334	418	219	473	824	473	303	359	792	229
3	256	336	316	424	241	562	688	869	292	220	473	222
4	271	322	305	443	307	540	623	590	258	202	417	218
5	279	321	315	706	264	544	573	509	373	218	519	213
6	253	383	346	634	523	654	503	480	606	211	385	207
7	239	433	331	486	853	644	468	485	410	216	320	208
8	228	345	314	435	554	609	444	525	339	311	293	214
9	223	309	306	426	405	542	447	437	303	222	271	286
10	217	295	315	369	381	491	408	471	297	198	258	296
11	211	291	2460	e330	379	459	382	408	382	191	245	227
12	208	322	2560	382	350	438	430	374	539	586	280	211
13	205	328	1300	380	334	405	1320	411	375	729	809	207
14	218	290	959	358	326	380	1350	362	331	423	478	200
15	607	275	888	342	310	370	941	464	544	390	350	201
16	350	267	743	e280	275	365	760	500	457	293	305	206
17	295	262	704	e250	265	380	670	391	374	251	282	231
18	325	254	704	321	275	367	611	353	355	241	266	2910
19	294	352	605	324	294	454	562	466	316	236	289	2680
20	267	837	554	293	351	498	523	409	286	220	310	1180
21	257	515	506	269	434	484	489	374	269	207	816	732
22	254	428	475	271	457	423	460	368	261	215	605	604
23	245	398	509	259	436	372	448	341	277	342	403	515
24	238	386	627	e240	406	358	485	305	251	272	345	443
25	229	463	745	e230	379	349	416	286	237	222	314	406
26	228	392	594	251	353	342	741	349	242	212	292	385
27	412	357	551	253	337	337	864	390	233	299	276	365
28	528	365	519	255	338	340	582	309	216	551	267	1120
29	676	502	495	249	371	317	514	278	245	303	296	2580
30	522	399	490	239	---	302	479	260	221	247	259	1830
31	413	---	462	226	---	301	---	262	---	237	269	---
TOTAL	9504	11150	20690	10769	10639	13533	18616	12952	9897	9028	13184	19566
MEAN	307	372	667	347	367	437	621	418	330	291	425	652
MAX	676	837	2560	706	853	654	1350	869	606	729	1700	2910
MIN	205	254	305	226	219	301	382	260	216	191	245	200
CFSM	1.42	1.72	3.09	1.61	1.70	2.02	2.87	1.93	1.53	1.35	1.97	3.02
IN.	1.64	1.92	3.56	1.85	1.83	2.33	3.21	2.23	1.70	1.55	2.27	3.37

**STATISTICS OF MONTHLY MEAN DATA FOR PERIOD OF DAILY RECORD, BY WATER YEAR (WY)**

MEAN	187	212	275	303	375	494	469	368	293	204	187	196
MAX	620	419	824	815	964	1335	1353	809	1639	486	573	1012
(WY)	1977	1997	1997	1996	1998	1994	1993	1998	1972	1989	1915	1975
MIN	93.6	97.5	97.2	92.4	102	161	186	167	122	81.2	80.6	93.6
(WY)	2002	2002	1966	1981	2002	2002	2002	1969	1966	1966	1966	2002

e Estimated.

**YELLOW BREECHES CREEK BASIN**

**01571500 YELLOW BREECHES CREEK NEAR CAMP HILL, PA--Continued**

<b>SUMMARY STATISTICS</b>	<b>FOR 2003 CALENDAR YEAR</b>		<b>FOR 2004 WATER YEAR</b>		<b>FOR PERIOD OF DAILY RECORD</b>	
ANNUAL TOTAL	169024		159528			
ANNUAL MEAN	463		436		297	
HIGHEST ANNUAL MEAN					500	
LOWEST ANNUAL MEAN					122	
HIGHEST DAILY MEAN	2590	Mar 21	2910	Sep 18	12400	Jun 22 1972
LOWEST DAILY MEAN	<b>b</b> 82	Feb 17	191	Jul 11	67	Sep 13 1966
ANNUAL SEVEN-DAY MINIMUM	156	Feb 12	212	Sep 11	70	Sep 7 1966
MAXIMUM PEAK FLOW			3600	Sep 18	<b>c</b> 19300	Sep 26 1975
MAXIMUM PEAK STAGE			<b>a</b> 8.78	Sep 18	<b>a</b> 18.77	Sep 26 1975
INSTANTANEOUS LOW FLOW			190	Jul 11,12	23	Sep 12 1966
ANNUAL RUNOFF (CFSM)	2.14		2.02		1.37	
ANNUAL RUNOFF (INCHES)	29.11		27.47		18.68	
10 PERCENT EXCEEDS	765		647		537	
50 PERCENT EXCEEDS	357		354		216	
90 PERCENT EXCEEDS	205		227		116	

**a** From floodmark.

**b** Result of freezeup.

**c** From rating curve extended above 16,000 ft<sup>3</sup>/s.

**YELLOW BRECHES CREEK BASIN**

**01571500 YELLOW BRECHES CREEK NEAR CAMP HILL, PA**

**LOCATION.**--Lat 40°13'29", long 76°53'54", Cumberland County, Hydrologic Unit 02050305, on left bank 50 ft downstream from single-span highway bridge on Green Lane Drive, 150 ft downstream from Olmsted Mill dam, 1.0 mi southeast of Camp Hill, and 3.1 mi upstream from mouth.

**DRAINAGE AREA.**--216 mi<sup>2</sup>.

**PERIOD OF RECORD.**--April 1909 to December 1919, July 1954 to current year. Prior to January 1910 monthly discharge only, published in WSP 1302. Prior to June 1954, published as "at Olmsteds Mill".

**REVISED RECORDS.**--WSP 1302: 1910, 1912-13, 1914(M), 1916.

**GAGE.**--Water-stage recorder. Datum of gage is 307.49 ft above National Geodetic Vertical Datum of 1929. March 1909 to December 1919, nonrecording gage at site 50 ft upstream at same datum.

**REMARKS.**--Records good. The Mechanicsburg Water Co. diverts water about 4 mi upstream from station for municipal supply. Diversion for the year was equivalent to a mean daily discharge of 2.9 ft<sup>3</sup>/s. Several measurements of water temperature were made during the year. Satellite and landline telemetry at station.

**EXTREMES OUTSIDE PERIOD OF RECORD.**--Flood of July 22, 1953, reached a stage of 9.4 ft, from floodmarks, discharge, about 3,940 ft<sup>3</sup>/s.

**PEAK DISCHARGES FOR CURRENT YEAR.**--Peak discharges greater than a base discharge of 1,250 ft<sup>3</sup>/s and maximum (\*):

Date	Time	Discharge ft <sup>3</sup> /s	Gage Height (ft)	Date	Time	Discharge ft <sup>3</sup> /s	Gage Height (ft)
Dec. 11	1545	3,380	8.49	Aug. 1	1445	2,770	7.44
Apr. 14	0045	1,600	4.94	Sept. 18	1715	*3,600	*a8.78
July 12	2330	1,400	4.50	Sept. 29	2315	2,900	7.68

a From floodmark.

DISCHARGE, CUBIC FEET PER SECOND, WATER YEAR OCTOBER 2003 TO SEPTEMBER 2004  
DAILY MEAN VALUES

DAY	OCT	NOV	DEC	JAN	FEB	MAR	APR	MAY	JUN	JUL	AUG	SEP
1	283	372	358	426	222	433	611	453	305	204	1700	240
2	273	351	334	418	219	473	824	473	303	359	792	229
3	256	336	316	424	241	562	688	869	292	220	473	222
4	271	322	305	443	307	540	623	590	258	202	417	218
5	279	321	315	706	264	544	573	509	373	218	519	213
6	253	383	346	634	523	654	503	480	606	211	385	207
7	239	433	331	486	853	644	468	485	410	216	320	208
8	228	345	314	435	554	609	444	525	339	311	293	214
9	223	309	306	426	405	542	447	437	303	222	271	286
10	217	295	315	369	381	491	408	471	297	198	258	296
11	211	291	2460	e330	379	459	382	408	382	191	245	227
12	208	322	2560	382	350	438	430	374	539	586	280	211
13	205	328	1300	380	334	405	1320	411	375	729	809	207
14	218	290	959	358	326	380	1350	362	331	423	478	200
15	607	275	888	342	310	370	941	464	544	390	350	201
16	350	267	743	e280	275	365	760	500	457	293	305	206
17	295	262	704	e250	265	380	670	391	374	251	282	231
18	325	254	704	321	275	367	611	353	355	241	266	2910
19	294	352	605	324	294	454	562	466	316	236	289	2680
20	267	837	554	293	351	498	523	409	286	220	310	1180
21	257	515	506	269	434	484	489	374	269	207	816	732
22	254	428	475	271	457	423	460	368	261	215	605	604
23	245	398	509	259	436	372	448	341	277	342	403	515
24	238	386	627	e240	406	358	485	305	251	272	345	443
25	229	463	745	e230	379	349	416	286	237	222	314	406
26	228	392	594	251	353	342	741	349	242	212	292	385
27	412	357	551	253	337	337	864	390	233	299	276	365
28	528	365	519	255	338	340	582	309	216	551	267	1120
29	676	502	495	249	371	317	514	278	245	303	296	2580
30	522	399	490	239	---	302	479	260	221	247	259	1830
31	413	---	462	226	---	301	---	262	---	237	269	---
TOTAL	9504	11150	20690	10769	10639	13533	18616	12952	9897	9028	13184	19566
MEAN	307	372	667	347	367	437	621	418	330	291	425	652
MAX	676	837	2560	706	853	654	1350	869	606	729	1700	2910
MIN	205	254	305	226	219	301	382	260	216	191	245	200
CFSM	1.42	1.72	3.09	1.61	1.70	2.02	2.87	1.93	1.53	1.35	1.97	3.02
IN.	1.64	1.92	3.56	1.85	1.83	2.33	3.21	2.23	1.70	1.55	2.27	3.37

**STATISTICS OF MONTHLY MEAN DATA FOR PERIOD OF DAILY RECORD, BY WATER YEAR (WY)**

MEAN	187	212	275	303	375	494	469	368	293	204	187	196
MAX	620	419	824	815	964	1335	1353	809	1639	486	573	1012
(WY)	1977	1997	1997	1996	1998	1994	1993	1998	1972	1989	1915	1975
MIN	93.6	97.5	97.2	92.4	102	161	186	167	122	81.2	80.6	93.6
(WY)	2002	2002	1966	1981	2002	2002	2002	1969	1966	1966	1966	2002

e Estimated.

**YELLOW BREECHES CREEK BASIN**

**01571500 YELLOW BREECHES CREEK NEAR CAMP HILL, PA--Continued**

<b>SUMMARY STATISTICS</b>	<b>FOR 2003 CALENDAR YEAR</b>		<b>FOR 2004 WATER YEAR</b>		<b>FOR PERIOD OF DAILY RECORD</b>	
ANNUAL TOTAL	169024		159528			
ANNUAL MEAN	463		436		297	
HIGHEST ANNUAL MEAN					500	
LOWEST ANNUAL MEAN					122	
HIGHEST DAILY MEAN	2590	Mar 21	2910	Sep 18	12400	Jun 22 1972
LOWEST DAILY MEAN	<b>b</b> 82	Feb 17	191	Jul 11	67	Sep 13 1966
ANNUAL SEVEN-DAY MINIMUM	156	Feb 12	212	Sep 11	70	Sep 7 1966
MAXIMUM PEAK FLOW			3600	Sep 18	<b>c</b> 19300	Sep 26 1975
MAXIMUM PEAK STAGE			<b>a</b> 8.78	Sep 18	<b>a</b> 18.77	Sep 26 1975
INSTANTANEOUS LOW FLOW			190	Jul 11,12	23	Sep 12 1966
ANNUAL RUNOFF (CFSM)	2.14		2.02		1.37	
ANNUAL RUNOFF (INCHES)	29.11		27.47		18.68	
10 PERCENT EXCEEDS	765		647		537	
50 PERCENT EXCEEDS	357		354		216	
90 PERCENT EXCEEDS	205		227		116	

**a** From floodmark.

**b** Result of freezeup.

**c** From rating curve extended above 16,000 ft<sup>3</sup>/s.