



2004 Water Year SWATARA CREEK BASIN

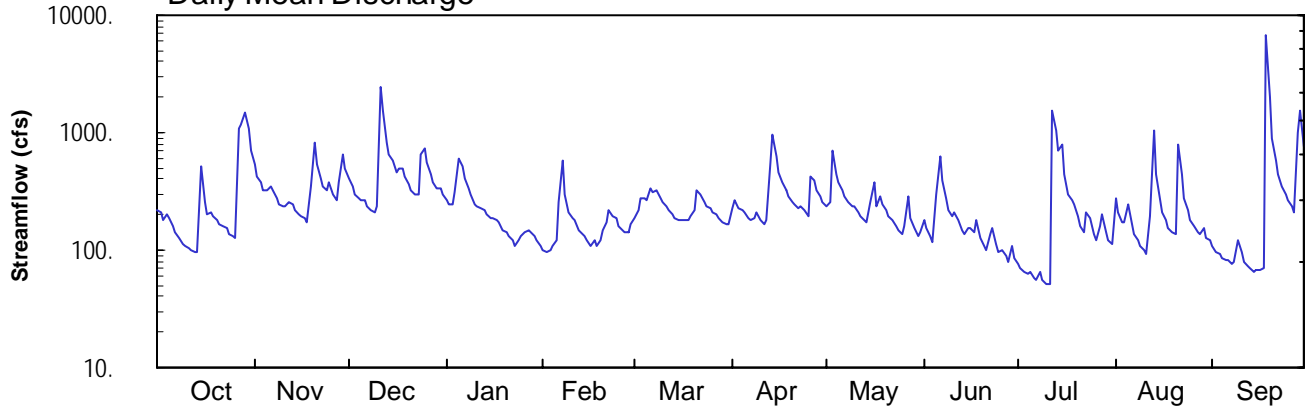
01572025 Swatara Creek near Pine Grove, PA

Latitude: 40° 31 ' 57"
Schuylkill County

Longitude: 076° 24 ' 09"
Datum: 480.66 feet

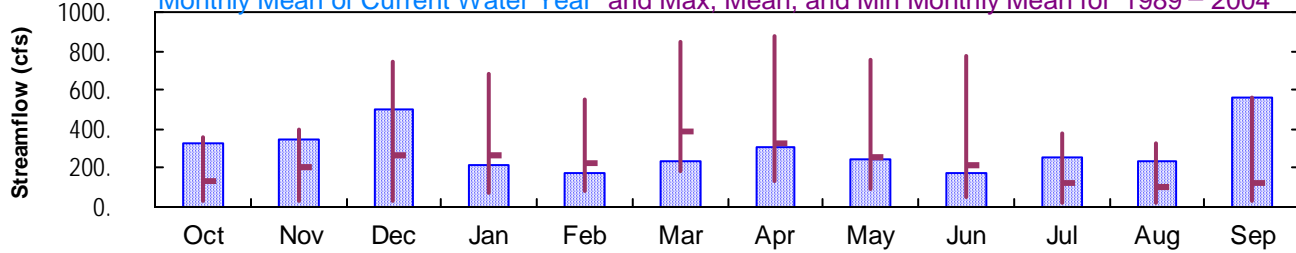
Hydrologic Unit Code: 02050305
Drainage Area: 116. mi²

Daily Mean Discharge

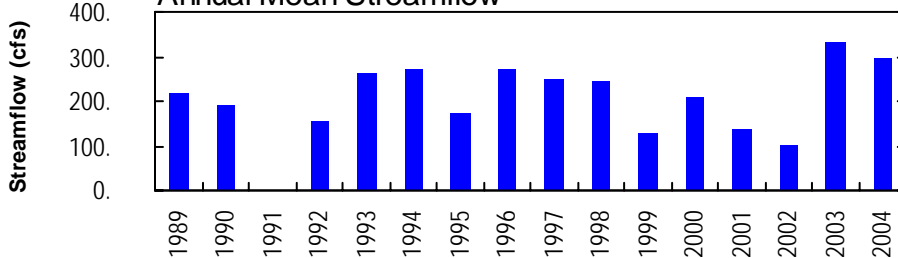


Monthly Statistics

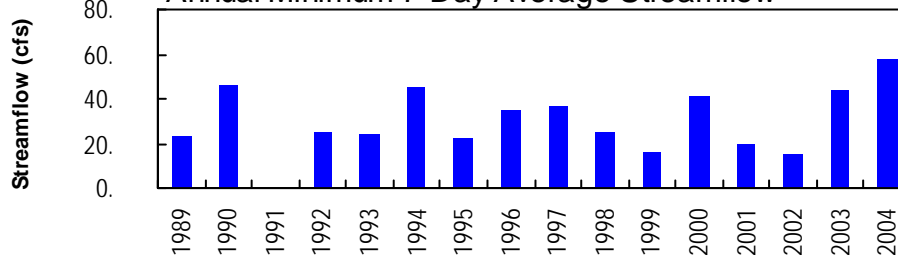
Monthly Mean of Current Water Year and Max, Mean, and Min Monthly Mean for 1989 – 2004



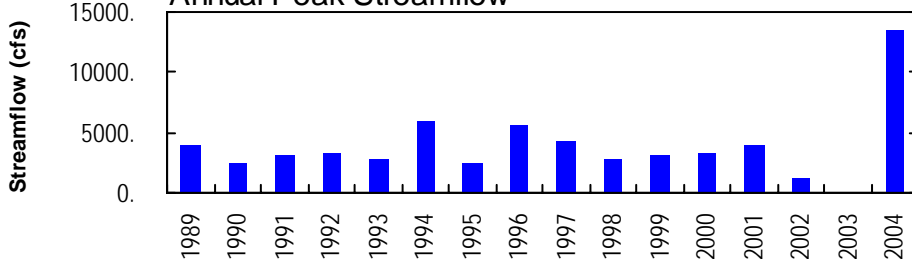
Annual Mean Streamflow



Annual Minimum 7-Day Average Streamflow



Annual Peak Streamflow



01572025-Swatara Creek near Pine Grove

SWATARA CREEK BASIN

01572025 SWATARA CREEK NEAR PINE GROVE, PA

LOCATION.--Lat 40°31'57", long 76°24'09", Schuylkill County, Hydrologic Unit 02050305, on right bank 1.0 mi downstream from Lower Little Swatara Creek, 1.3 mi southwest of Pine Grove, and 1.6 mi upstream from bridge on Interstate Highway 81.

DRAINAGE AREA.--116 mi².

PERIOD OF RECORD.--October 1988 to January 1991, October 1991 to current year.

REVISED RECORDS.--WDR PA-90-2: 1989.

GAGE.--Water-stage recorder. Datum of gage is 480.66 ft above North American Vertical Datum of 1988.

REMARKS.--Records good except those for estimated daily discharges, which are poor. Satellite telemetry at station.

PEAK DISCHARGES FOR CURRENT YEAR.--Peak discharges greater than a base discharge of 1,500 ft³/s and maximum (*):

Date	Time	Discharge ft ³ /s	Gage Height (ft)	Date	Time	Discharge ft ³ /s	Gage Height (ft)
Oct. 27	1845	2,030	8.85	July 12	1645	3,160	10.74
Oct. 29	1145	1,940	8.70	Sept. 18	1000	*13,500	*a15.28
Dec. 11	1400	3,480	11.22	Sept. 28	2200	2,470	9.61

a From floodmark in gage.

**DISCHARGE, CUBIC FEET PER SECOND, WATER YEAR OCTOBER 2003 TO SEPTEMBER 2004
DAILY MEAN VALUES**

DAY	OCT	NOV	DEC	JAN	FEB	MAR	APR	MAY	JUN	JUL	AUG	SEP
1	221	529	407	264	e100	184	229	239	177	75	272	108
2	207	431	344	247	e95	221	266	256	155	71	208	98
3	179	370	298	241	e100	277	229	705	133	66	174	93
4	203	328	271	314	e110	276	218	441	116	62	175	86
5	188	325	263	607	e120	264	206	370	304	64	242	82
6	158	347	262	515	e260	330	190	323	621	59	166	81
7	144	329	239	401	e580	308	182	290	388	56	139	78
8	129	273	220	340	e300	329	189	256	279	64	120	80
9	114	248	207	302	e210	281	211	237	222	56	107	120
10	110	238	239	e250	e190	253	178	231	192	52	98	97
11	104	234	2410	e240	e180	235	165	207	213	51	92	78
12	101	255	1520	e230	e150	221	179	191	181	1550	197	72
13	95	246	824	e220	e140	200	562	180	148	1050	1040	70
14	95	217	639	e200	e130	184	977	174	136	706	433	66
15	521	204	570	e190	e120	177	633	251	156	799	272	68
16	251	192	451	e190	e110	178	455	373	156	438	211	67
17	202	184	498	e180	e120	179	373	238	141	301	177	70
18	212	175	492	e170	e110	177	322	289	176	270	157	6790
19	194	351	417	e150	e120	196	286	242	128	242	142	1990
20	176	828	363	e140	e150	216	259	216	109	191	137	888
21	169	534	318	e130	e170	326	242	198	101	159	791	587
22	163	410	296	e120	221	303	227	182	135	140	448	440
23	151	343	300	e110	196	260	234	162	156	214	280	355
24	139	319	659	e120	186	237	216	146	111	187	216	301
25	130	370	724	e130	161	227	197	136	96	137	181	264
26	127	295	547	e140	146	213	426	160	102	123	158	235
27	1070	268	442	e150	141	205	398	292	89	159	142	211
28	1180	371	376	e140	145	190	318	188	80	201	135	994
29	1480	659	337	e130	163	175	282	152	109	143	152	1510
30	1070	491	330	e120	---	168	258	132	84	121	125	763
31	697	---	293	e110	---	166	---	145	---	112	120	---
TOTAL	9980	10364	15556	6791	4924	7156	9107	7602	5194	7919	7307	16742
MEAN	322	345	502	219	170	231	304	245	173	255	236	558
MAX	1480	828	2410	607	580	330	977	705	621	1550	1040	6790
MIN	95	175	207	110	95	166	165	132	80	51	92	66
CFSM	2.78	2.98	4.33	1.89	1.46	1.99	2.62	2.11	1.49	2.20	2.03	4.81
IN.	3.20	3.32	4.99	2.18	1.58	2.29	2.92	2.44	1.67	2.54	2.34	5.37

STATISTICS OF MONTHLY MEAN DATA FOR PERIOD OF DAILY RECORD, BY WATER YEAR (WY)

MEAN	137	207	265	264	228	385	325	257	215	126	99.0	122
MAX	361	396	745	683	555	846	874	756	772	378	330	558
(WY)	1997	1993	1997	1996	1998	1994	1993	1989	2003	1989	2003	2004
MIN	27.3	32.1	27.4	70.4	82.8	185	135	91.9	46.6	23.1	19.7	26.1
(WY)	2002	2002	1999	2002	2002	1990	1995	1999	1999	1999	2002	1995

e Estimated.

SWATARA CREEK BASIN

01572025 SWATARA CREEK NEAR PINE GROVE, PA--Continued

SUMMARY STATISTICS	FOR 2003 CALENDAR YEAR		FOR 2004 WATER YEAR		FOR PERIOD OF DAILY RECORD	
ANNUAL TOTAL	132191		108642			
ANNUAL MEAN	362		297		216	
HIGHEST ANNUAL MEAN					332	
LOWEST ANNUAL MEAN					104	
HIGHEST DAILY MEAN	2760	Jun 21	6790	Sep 18	6790	Sep 18 2004
LOWEST DAILY MEAN	e 60	Feb 16	51	Jul 11	14	Aug 7 1999
ANNUAL SEVEN-DAY MINIMUM	b 66	Feb 12	57	Jul 5	15	Sep 8 2002
MAXIMUM PEAK FLOW			c 13500	Sep 18	c 13500	Sep 18 2004
MAXIMUM PEAK STAGE			a 15.28	Sep 18	a 15.28	Sep 18 2004
INSTANTANEOUS LOW FLOW			50	Jul 10-12	13	Sep 10 2002 d
ANNUAL RUNOFF (CFSM)	3.12		2.56		1.87	
ANNUAL RUNOFF (INCHES)	42.39		34.84		25.35	
10 PERCENT EXCEEDS	736		530		444	
50 PERCENT EXCEEDS	260		206		135	
90 PERCENT EXCEEDS	112		100		35	

a From floodmark in gage.

b Computed using estimated daily discharges.

c From rating curve extended above 3,300 ft³/s on basis of slope-area measurement at gage height 15.28 ft.

d Also Sept. 12, 14, 2002.

e Estimated.