



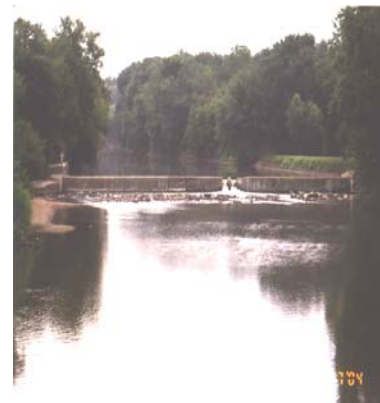
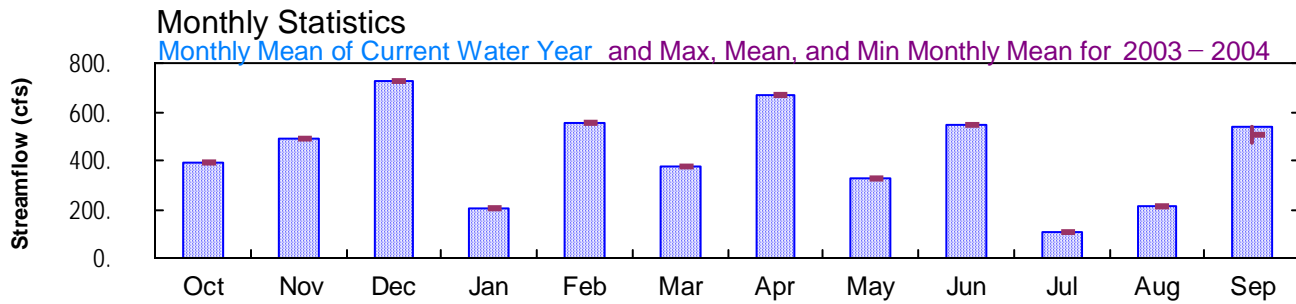
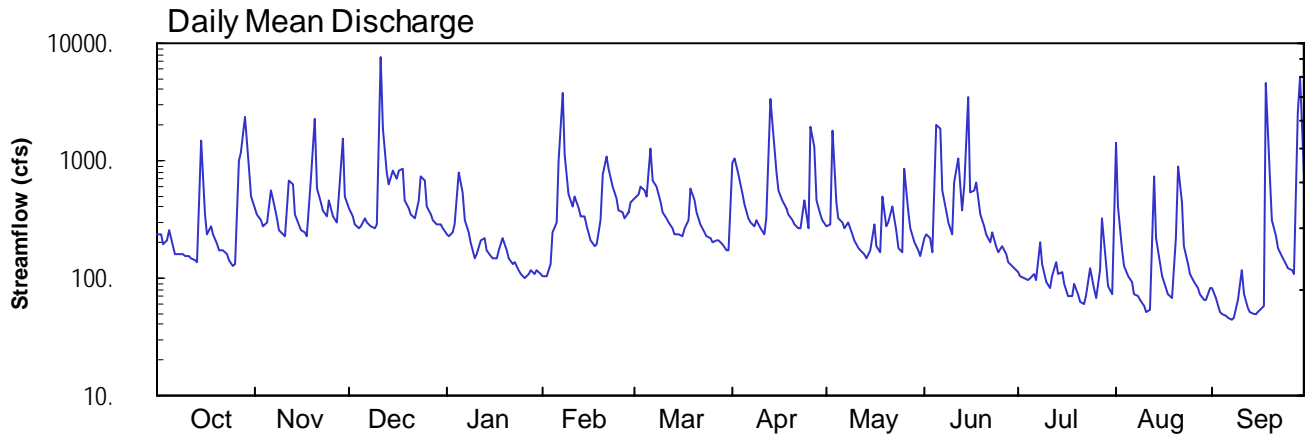
2004 Water Year
WEST CONEWAGO CREEK BASIN

01573825 West Conewago Creek at East Berlin, PA

Latitude: 39° 56 ' 27"
Adams County

Longitude: 076° 59 ' 27"
Datum: 400 feet

Hydrologic Unit Code: 02050306
Drainage Area: 218. mi²



WEST CONEWAGO CREEK BASIN

01573825 WEST CONEWAGO CREEK AT EAST BERLIN, PA

LOCATION.--Lat 39°56'27", long 76°59'27", Adams County, Hydrologic Unit 02050306, on right bank 100 ft downstream from bridge on State Highway 234, 1.4 mi upstream from confluence with Beaver Creek, at East Berlin.

DRAINAGE AREA.--218 mi².

PERIOD OF RECORD.--September 2003 to current year.

GAGE.--Water-stage recorder, crest-stage gage, and concrete control. Datum of gage is 400 ft above National Geodetic Vertical Datum of 1929, topographic map.

REMARKS.--Records good except those for estimated daily discharges, which are fair. Satellite telemetry at station.

PEAK DISCHARGES FOR CURRENT YEAR.--Peak discharges greater than a base discharge of 4,500 ft³/s and maximum (*):

Date	Time	Discharge ft ³ /s	Gage Height (ft)	Date	Time	Discharge ft ³ /s	Gage Height (ft)
Nov. 20	0145	4,670	9.28	June 5	2000	6,310	11.01
Dec. 11	1115	*10,400	*15.04	June 15	0545	7,370	12.09
Feb. 7	0015	8,900	13.62	Sept. 18	1300	9,030	13.74
Apr. 13	0430	5,530	10.20	Sept. 29	0030	9,780	14.47

**DISCHARGE, CUBIC FEET PER SECOND, WATER YEAR OCTOBER 2002 TO SEPTEMBER 2003
DAILY MEAN VALUES**

DAY	OCT	NOV	DEC	JAN	FEB	MAR	APR	MAY	JUN	JUL	AUG	SEP
1	---	---	---	---	---	---	---	---	---	---	---	e130
2	---	---	---	---	---	---	---	---	---	---	---	e230
3	---	---	---	---	---	---	---	---	---	---	---	e240
4	---	---	---	---	---	---	---	---	---	---	---	e300
5	---	---	---	---	---	---	---	---	---	---	---	e580
6	---	---	---	---	---	---	---	---	---	---	---	e360
7	---	---	---	---	---	---	---	---	---	---	---	e240
8	---	---	---	---	---	---	---	---	---	---	---	e160
9	---	---	---	---	---	---	---	---	---	---	---	e130
10	---	---	---	---	---	---	---	---	---	---	---	e122
11	---	---	---	---	---	---	---	---	---	---	---	e110
12	---	---	---	---	---	---	---	---	---	---	---	96
13	---	---	---	---	---	---	---	---	---	---	---	104
14	---	---	---	---	---	---	---	---	---	---	---	130
15	---	---	---	---	---	---	---	---	---	---	---	122
16	---	---	---	---	---	---	---	---	---	---	---	299
17	---	---	---	---	---	---	---	---	---	---	---	209
18	---	---	---	---	---	---	---	---	---	---	---	175
19	---	---	---	---	---	---	---	---	---	---	---	628
20	---	---	---	---	---	---	---	---	---	---	---	360
21	---	---	---	---	---	---	---	---	---	---	---	197
22	---	---	---	---	---	---	---	---	---	---	---	150
23	---	---	---	---	---	---	---	---	---	---	---	5130
24	---	---	---	---	---	---	---	---	---	---	---	1310
25	---	---	---	---	---	---	---	---	---	---	---	452
26	---	---	---	---	---	---	---	---	---	---	---	440
27	---	---	---	---	---	---	---	---	---	---	---	333
28	---	---	---	---	---	---	---	---	---	---	---	815
29	---	---	---	---	---	---	---	---	---	---	---	382
30	---	---	---	---	---	---	---	---	---	---	---	273
31	---	---	---	---	---	---	---	---	---	---	---	---
TOTAL	---	---	---	---	---	---	---	---	---	---	---	14207
MEAN	---	---	---	---	---	---	---	---	---	---	---	474
MAX	---	---	---	---	---	---	---	---	---	---	---	5130
MIN	---	---	---	---	---	---	---	---	---	---	---	96
CFSM	---	---	---	---	---	---	---	---	---	---	---	2.17
IN.	---	---	---	---	---	---	---	---	---	---	---	2.42

e Estimated.

WEST CONEWAGO CREEK BASIN

01573825 WEST CONEWAGO CREEK AT EAST BERLIN, PA

**DISCHARGE, CUBIC FEET PER SECOND, WATER YEAR OCTOBER 2003 TO SEPTEMBER 2004
DAILY MEAN VALUES**

DAY	OCT	NOV	DEC	JAN	FEB	MAR	APR	MAY	JUN	JUL	AUG	SEP
1	240	394	391	239	e105	474	973	275	216	110	1410	82
2	232	343	331	230	e105	517	1040	283	240	104	404	67
3	197	308	288	249	e130	609	775	1800	215	102	175	52
4	211	276	263	287	e250	548	517	446	165	95	126	50
5	252	300	280	798	e300	493	422	328	2030	102	103	48
6	187	565	320	545	e1000	1250	328	298	1880	107	93	46
7	161	480	303	312	3830	683	297	270	556	94	74	45
8	160	320	271	243	1140	596	278	303	371	198	70	47
9	160	260	270	e200	507	436	310	233	293	130	66	65
10	154	236	292	e150	406	363	266	210	239	92	57	116
11	155	225	7580	e160	493	327	240	183	657	82	52	73
12	147	665	1840	211	388	301	320	171	1030	104	54	57
13	141	619	798	215	332	263	3320	160	371	139	743	53
14	138	349	633	e170	338	240	2120	148	623	107	218	50
15	1480	282	833	e155	279	235	805	173	3490	113	137	50
16	344	256	705	e150	213	229	552	291	532	88	106	54
17	234	244	836	e150	188	270	452	190	554	72	82	59
18	276	231	853	173	197	306	395	168	652	71	74	4640
19	232	711	467	221	308	575	351	493	348	90	67	693
20	192	2260	396	170	768	455	308	273	274	72	216	310
21	172	579	347	e150	1070	357	283	294	235	63	905	230
22	170	435	325	e130	850	288	266	405	206	60	438	182
23	158	373	450	e135	612	242	262	259	248	71	184	151
24	141	339	744	e115	480	225	456	179	190	123	133	132
25	129	453	686	e110	380	216	267	168	163	82	107	122
26	129	338	409	e100	360	205	1920	856	188	67	94	116
27	985	299	354	e110	325	207	1320	358	158	116	83	108
28	1150	492	311	e115	362	207	465	270	137	328	73	2510
29	2330	1560	285	e110	435	191	355	200	127	131	66	5160
30	882	486	288	e115	---	175	305	171	123	86	64	781
31	487	---	265	e110	---	175	---	155	---	72	83	---
TOTAL	12026	14678	22414	6328	16151	11658	19968	10011	16511	3271	6557	16149
MEAN	388	489	723	204	557	376	666	323	550	106	212	538
MAX	2330	2260	7580	798	3830	1250	3320	1800	3490	328	1410	5160
MIN	129	225	263	100	105	175	240	148	123	60	52	45
CFSM	1.78	2.24	3.32	0.94	2.55	1.73	3.05	1.48	2.52	0.48	0.97	2.47
IN.	2.05	2.50	3.82	1.08	2.76	1.99	3.41	1.71	2.82	0.56	1.12	2.76

STATISTICS OF MONTHLY MEAN DATA FOR WATER YEARS 2003 - 2004, BY WATER YEAR (WY)

MEAN	388	489	723	204	557	376	666	323	550	106	212	506
MAX	388	489	723	204	557	376	666	323	550	106	212	538
(WY)	2004	2004	2004	2004	2004	2004	2004	2004	2004	2004	2004	2004
MIN	388	489	723	204	557	376	666	323	550	106	212	474
(WY)	2004	2004	2004	2004	2004	2004	2004	2004	2004	2004	2004	2003

e Estimated.

WEST CONEWAGO CREEK BASIN

01573825 WEST CONEWAGO CREEK AT EAST BERLIN, PA

SUMMARY STATISTICS	FOR 2004 WATER YEAR		WATER YEARS 2003 - 2004	
ANNUAL TOTAL	155722			
ANNUAL MEAN	425		425	
HIGHEST ANNUAL MEAN			425	2004
LOWEST ANNUAL MEAN			425	2004
HIGHEST DAILY MEAN	7580	Dec 11	7580	Dec 11 2003
LOWEST DAILY MEAN	45	Sep 7	45	Sep 7 2004
ANNUAL SEVEN-DAY MINIMUM	50	Sep 3	50	Sep 3 2004
MAXIMUM PEAK FLOW	a10400	Dec 11	a10400	Dec 11 2003
MAXIMUM PEAK STAGE	15.04	Dec 11	15.04	Dec 11 2003
INSTANTANEOUS LOW FLOW	44	Sep 6,7	44	Sep 6,7 2004
ANNUAL RUNOFF (CFSM)	1.95		1.95	
ANNUAL RUNOFF (INCHES)	26.57		26.52	
10 PERCENT EXCEEDS	800		800	
50 PERCENT EXCEEDS	254		254	
90 PERCENT EXCEEDS	82		82	

a From rating curve extended above 8,150 ft³/s on basis of straight-line extension.