



2004 Water Year CODORUS CREEK BASIN

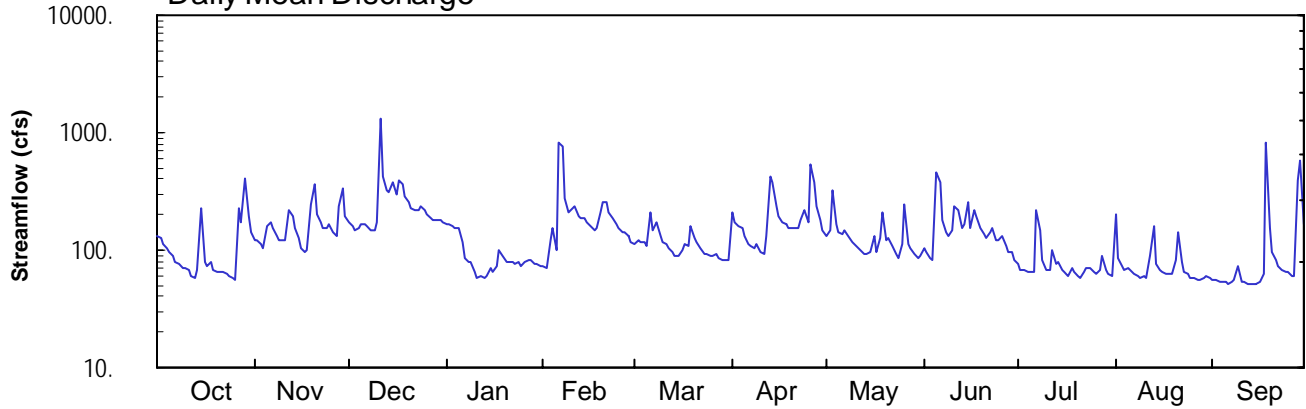
01574500 Codorus Creek at Spring Grove, PA

Latitude: 39° 52' 43"
York County

Longitude: 076° 51' 13"
Datum: 430.86 feet

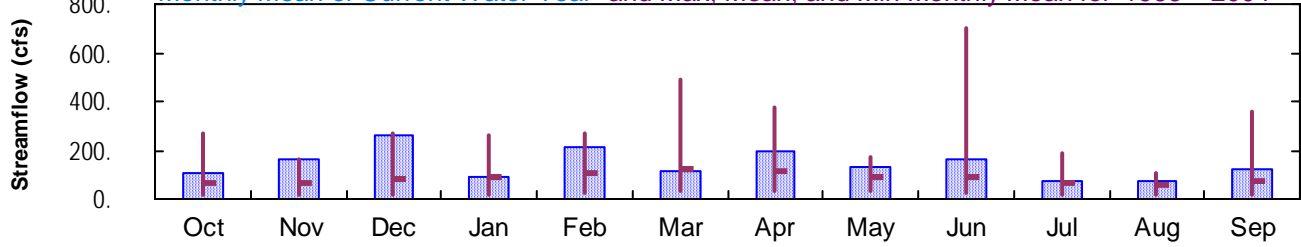
Hydrologic Unit Code: 02050306
Drainage Area: 75.5 mi²

Daily Mean Discharge

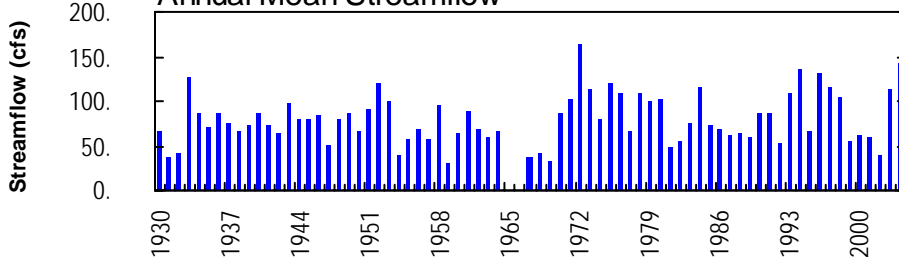


Monthly Statistics

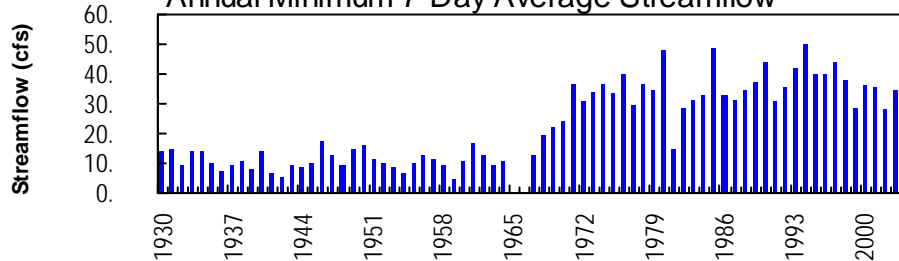
Monthly Mean of Current Water Year and Max, Mean, and Min Monthly Mean for 1966 – 2004



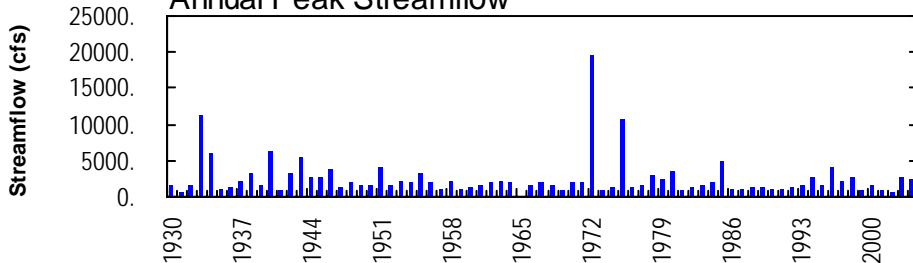
Annual Mean Streamflow



Annual Minimum 7-Day Average Streamflow



Annual Peak Streamflow



01574500-Codorus Creek at Spring Grove

CODORUS CREEK BASIN

01574500 CODORUS CREEK AT SPRING GROVE, PA

LOCATION.--Lat 39°52'43", long 76°51'13", York County, Hydrologic Unit 02050306, on right bank 15 ft downstream from abutments of dismantled county highway bridge on Township Route 452, 0.1 mi downstream from small left-bank tributary, 0.3 mi downstream from east boundary of Spring Grove, and 7.0 mi southwest of York.

DRAINAGE AREA.--75.5 mi².

PERIOD OF RECORD.--May 1929 to September 1964, November 1965 to current year. October 1962 to September 1964, November 1965 to September 1968, published as West Branch Codorus Creek at Spring Grove.

REVISED RECORDS.--WSP 1302: 1929-30. WSP 1502: 1932(M), 1933, 1935(M), 1940, 1942(M), 1943, 1944-46(M), 1951(M), 1955(m).

GAGE.--Water-stage recorder and concrete control. Datum of gage is 430.86 ft above National Geodetic Vertical Datum of 1929. Prior to Jan. 18, 1930, nonrecording gage, Jan. 18, 1930, to Sept. 9, 1941, water-stage recorder at site 0.9 mi upstream, and Sept. 10, 1941, to Sept. 30, 1964, water-stage recorder at site 0.8 mi upstream, all at datum 5.64 ft higher. Nov. 1 to Dec. 20, 1965, nonrecording gage about 40 ft downstream at unknown datum, Dec. 21, 1965, to Mar. 31, 1966, nonrecording gage at present site and datum.

REMARKS.--No estimated daily discharges. Records good. Daily discharges include water diverted around station by waste treatment plant of P.H. Glatfelter Company. Flow regulated by dam on Lake Marburg (station 01574390) about 20 miles upstream. Several measurements of water temperature were made during the year. Satellite telemetry at station.

COOPERATION.--Records of change in lake contents and daily diversion furnished by P.H. Glatfelter Company.

DISCHARGE, CUBIC FEET PER SECOND, WATER YEAR OCTOBER 2003 TO SEPTEMBER 2004
DAILY MEAN VALUES

DAY	OCT	NOV	DEC	JAN	FEB	MAR	APR	MAY	JUN	JUL	AUG	SEP
1	130	121	176	163	73	113	206	134	106	77	201	55
2	126	120	159	164	71	120	173	146	95	69	85	55
3	112	114	146	162	123	119	162	319	87	67	73	54
4	103	105	152	153	154	118	154	163	83	64	67	54
5	96	159	165	156	99	108	132	143	459	64	70	53
6	89	173	167	116	814	214	112	135	382	64	65	52
7	80	152	159	85	751	148	107	146	182	218	62	53
8	77	130	150	78	275	172	103	130	143	146	60	56
9	70	122	148	78	212	130	112	117	130	81	59	73
10	70	121	174	66	225	119	97	114	150	69	60	54
11	67	122	1340	57	232	111	93	106	232	67	59	53
12	61	218	428	60	197	105	133	99	217	101	89	51
13	58	192	322	58	190	95	427	94	155	77	161	51
14	68	152	312	60	185	90	370	91	165	78	75	52
15	225	125	379	71	170	90	234	95	253	68	67	52
16	80	103	293	65	157	99	191	134	154	64	64	53
17	73	98	395	74	150	113	176	97	215	61	62	62
18	80	100	359	99	152	110	164	124	195	70	62	832
19	68	245	284	90	208	157	155	214	156	64	63	155
20	66	359	259	80	252	125	152	121	138	60	81	95
21	64	198	231	79	256	116	156	126	124	59	144	82
22	64	170	220	79	213	102	156	107	143	66	80	73
23	63	155	217	77	186	94	180	93	155	70	64	67
24	60	152	234	79	164	92	218	87	121	70	62	64
25	58	168	220	74	156	90	175	111	120	65	59	64
26	56	141	199	80	144	88	539	250	132	63	57	61
27	231	134	188	82	140	91	372	112	109	69	55	60
28	172	232	180	81	132	87	237	103	97	89	56	396
29	402	340	177	77	117	81	182	91	96	67	58	588
30	195	192	182	77	---	81	145	84	82	62	60	166
31	140	---	170	74	---	82	---	89	---	61	57	---
TOTAL	3304	4913	8185	2794	6198	3460	5813	3975	4876	2370	2337	3636
MEAN	107	164	264	90.1	214	112	194	128	163	76.5	75.4	121
MAX	402	359	1340	164	814	214	539	319	459	218	201	832
MIN	56	98	146	57	71	81	93	84	82	59	55	51
(†)	+12.5	0	-7.2	-6.2	-5.7	+11.1	+10.9	-4.2	-5.6	-15.3	-26.5	-11.9

† Change in contents from Lake Marburg, equivalent in cubic feet per second.

CODORUS CREEK BASIN

01574500 CODORUS CREEK AT SPRING GROVE, PA--Continued

REMARKS.--Daily and monthly discharge figures (and those data determined from them) include water diverted around station by P.H. Glatfelter Co. Instantaneous data reflect actual streamflow past gage and do not include diverted streamflow.

STATISTICS OF MONTHLY MEAN DATA FOR WATER YEARS 1966 - 2004, BY WATER YEAR (WY) (SINCE REGULATION)

	OCT	NOV	DEC	JAN	FEB	MAR	APR	MAY	JUN	JUL	AUG	SEP
MEAN	66.5	63.8	80.8	86.7	102	124	118	89.0	91.2	63.0	57.1	69.8
MAX	269	164	270	264	269	492	372	171	699	185	109	360
(WY)	1980	2004	1997	1996	1971	1994	1993	1975	1972	1970	1996	1975
MIN	18.1	15.8	16.9	19.5	25.7	33.0	31.2	28.8	21.4	17.4	17.1	19.2
(WY)	1967	1966	1966	1966	1969	1969	1969	1969	1966	1966	1966	1966

SUMMARY STATISTICS FOR 2003 CALENDAR YEAR FOR 2004 WATER YEAR WATER YEARS 1966 - 2004

ANNUAL TOTAL	51594		51861		85.4	
ANNUAL MEAN	141		142		163	
HIGHEST ANNUAL MEAN					1972	
LOWEST ANNUAL MEAN					33.6	
HIGHEST DAILY MEAN	1340		Dec 11		11000	
LOWEST DAILY MEAN	33		Feb 9, 11		0.60	
ANNUAL SEVEN-DAY MINIMUM	36		Feb 6		Sep 10	
MAXIMUM PEAK FLOW			a2440		Dec 11	
MAXIMUM PEAK STAGE			7.74		Dec 11	
10 PERCENT EXCEEDS	263		232		157	
50 PERCENT EXCEEDS	98		112		55	
90 PERCENT EXCEEDS	46		60		35	

STATISTICS OF MONTHLY MEAN DATA FOR WATER YEARS 1929 - 1964, BY WATER YEAR (WY) (PRIOR TO REGULATION)

	OCT	NOV	DEC	JAN	FEB	MAR	APR	MAY	JUN	JUL	AUG	SEP
MEAN	38.4	52.7	64.4	87.4	114	144	125	86.1	55.6	38.7	44.0	41.7
MAX	151	148	164	223	244	360	326	206	165	157	321	424
(WY)	1943	1938	1951	1949	1951	1936	1952	1952	1946	1945	1933	1934
MIN	8.76	11.9	18.1	19.5	27.3	50.1	41.3	26.6	19.6	9.09	11.9	8.93
(WY)	1942	1937	1959	1942	1932	1959	1947	1963	1959	1954	1935	1941

SUMMARY STATISTICS WATER YEARS 1929 - 1964

ANNUAL MEAN	c74.1	
HIGHEST ANNUAL MEAN	127	
LOWEST ANNUAL MEAN	31.4	
HIGHEST DAILY MEAN	3920	
LOWEST DAILY MEAN	.80	
ANNUAL SEVEN-DAY MINIMUM	5.0	
MAXIMUM PEAK FLOW	d11200	
MAXIMUM PEAK STAGE	f11.84	
INSTANTANEOUS LOW FLOW	.00	
ANNUAL RUNOFF (CFSM)	.98	
ANNUAL RUNOFF (INCHES)	13.34	
10 PERCENT EXCEEDS	151	
50 PERCENT EXCEEDS	42	
90 PERCENT EXCEEDS	14	

- a From rating curve extended above 2,000 ft³/s on basis of computation of peak discharge at dam at gage height 6.80 ft and at peak flow.
b From floodmark in gage.
c Adjusted for diversion since March 1961.
d From rating curve extended above 2,400 ft³/s on basis of computation of flow at gage height 11.84 ft.
f Site and datum then in use.