



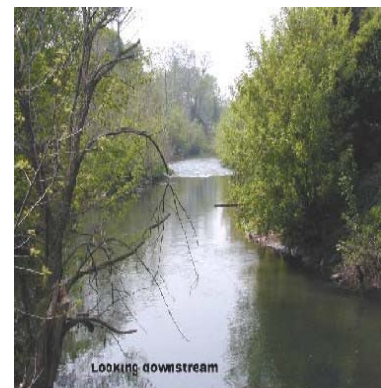
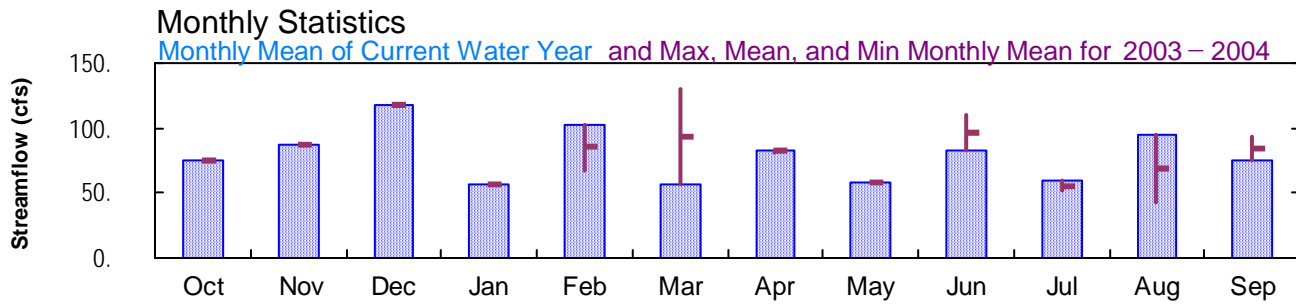
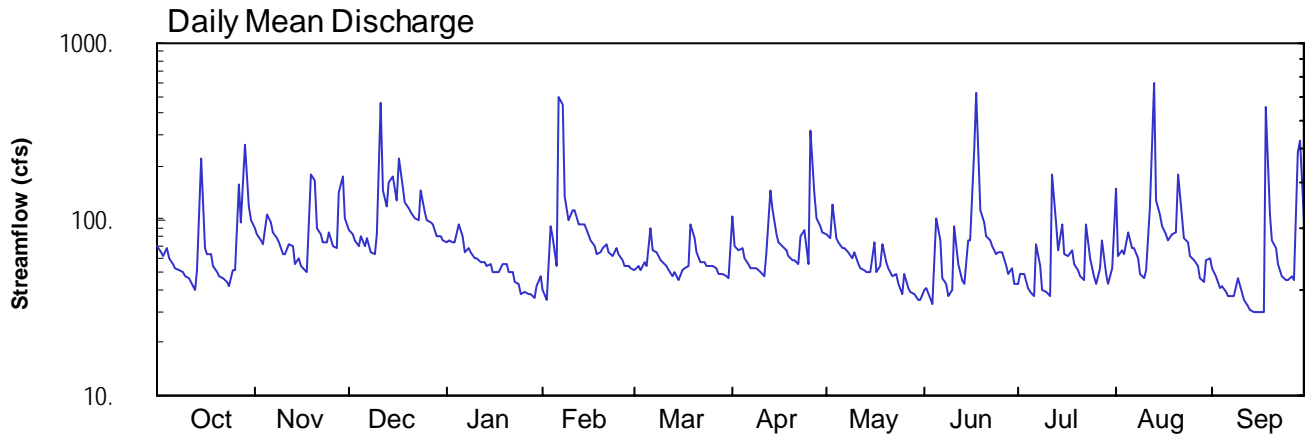
2004 Water Year
CONESTOGA RIVER BASIN

01576712 Little Conestoga Creek near Millersville, PA

Latitude: 40° 01' 15"
Lancaster County

Longitude: 076° 21' 33"
Datum: 270 feet

Hydrologic Unit Code: 02050306
Drainage Area: 42.3 mi²



01576712-LittleConestoga Creek near Millersville

CONESTOGA RIVER BASIN

01576712 LITTLE CONESTOGA CREEK NEAR MILLERSVILLE, PA

LOCATION.--Lat 40°01'15", long 76°21'33", Lancaster County, Hydrologic Unit 02050306, on right bank, 150 ft downstream from highway bridge on State Route 741, 7.9 mi upstream from confluence with Conestoga River, and 2.0 mi north of Millersville.

DRAINAGE AREA.--42.3 mi².

PERIOD OF RECORD.--January 2003 to current year.

GAGE.--Water-stage recorder and crest-stage gage. Datum of gage is 270 ft above National Geodetic Vertical Datum of 1929, from topographic map.

REMARKS.--Records good except those for estimated daily discharges, which are fair. Satellite telemetry at station.

PEAK DISCHARGES FOR CURRENT YEAR.--Peak discharges greater than a base discharge of 500 ft³/s and maximum (*):

Date	Time	Discharge ft ³ /s	Gage Height (ft)	Date	Time	Discharge ft ³ /s	Gage Height (ft)
Oct. 15	0245	606	8.51	July 12	1900	566	8.27
Oct. 29	1045	534	8.08	Aug. 13	0645	954	10.44
Dec. 11	1115	762	9.40	Aug. 21	1615	517	7.98
Feb. 6	2130	1,020	10.78	Sept. 18	1315	849	9.88
Apr. 26	1415	572	8.31	Sept. 28	2215	812	9.68
June 18	0245	*1,260	*11.99				

**DISCHARGE, CUBIC FEET PER SECOND, WATER YEAR OCTOBER 2003 TO SEPTEMBER 2004
DAILY MEAN VALUES**

DAY	OCT	NOV	DEC	JAN	FEB	MAR	APR	MAY	JUN	JUL	AUG	SEP
1	70	89	87	74	39	52	105	83	40	43	148	53
2	65	81	82	76	35	54	70	79	41	49	62	48
3	62	76	76	74	92	52	66	122	35	49	67	41
4	69	72	71	74	80	57	69	78	33	41	63	42
5	60	108	80	94	54	54	60	74	101	39	84	39
6	56	96	71	79	499	89	55	69	75	37	69	36
7	52	85	77	65	441	66	53	69	46	72	69	37
8	51	79	65	68	136	65	53	66	43	55	60	36
9	50	75	63	e65	99	59	52	61	36	39	49	46
10	48	64	83	e60	114	56	50	65	39	39	47	39
11	47	63	455	e60	112	54	47	56	91	36	52	35
12	44	73	147	57	95	52	64	53	56	180	120	33
13	40	69	117	58	95	48	144	51	45	93	590	31
14	51	56	162	55	93	50	116	51	43	66	129	30
15	223	60	176	e55	86	46	81	51	76	94	105	30
16	68	54	128	e50	75	51	74	74	75	64	90	30
17	63	51	222	e50	69	53	71	51	249	62	82	30
18	63	51	153	e50	63	54	67	55	523	66	77	435
19	54	180	126	e55	65	94	62	72	114	56	82	107
20	50	165	116	e55	68	78	59	57	95	52	84	75
21	48	89	110	e50	72	66	58	53	79	48	180	69
22	46	83	100	e50	66	57	55	48	76	46	104	56
23	44	74	98	44	62	58	80	49	70	93	79	48
24	41	73	145	43	68	54	86	42	64	60	75	45
25	52	83	110	38	63	54	56	38	65	47	62	45
26	52	70	98	38	58	54	318	48	65	42	59	48
27	159	68	97	37	54	53	141	41	55	53	54	46
28	97	143	93	37	55	49	102	38	50	77	47	241
29	267	173	81	36	53	48	90	37	52	49	44	276
30	120	100	81	42	---	47	84	35	43	43	59	101
31	98	---	77	47	---	46	---	35	---	53	60	---
TOTAL	2310	2603	3647	1736	2961	1770	2488	1801	2475	1843	2952	2228
MEAN	74.5	86.8	118	56.0	102	57.1	82.9	58.1	82.5	59.5	95.2	74.3
MAX	267	180	455	94	499	94	318	122	523	180	590	435
MIN	40	51	63	36	35	46	47	35	33	36	44	30
CFSM	1.76	2.05	2.78	1.32	2.41	1.35	1.96	1.37	1.95	1.41	2.25	1.76
IN.	2.03	2.29	3.21	1.53	2.60	1.56	2.19	1.58	2.18	1.62	2.60	1.96

STATISTICS OF MONTHLY MEAN DATA FOR WATER YEARS 2003 - 2004, BY WATER YEAR (WY)

MEAN	74.5	86.8	118	56.0	85.3	93.4	82.1	57.8	96.3	55.4	69.0	84.0
MAX	74.5	86.8	118	56.0	102	130	82.9	58.1	110	59.5	95.2	93.7
(WY)	2004	2004	2004	2004	2004	2003	2004	2004	2003	2004	2004	2003
MIN	74.5	86.8	118	56.0	67.9	57.1	81.3	57.5	82.5	51.4	42.7	74.3
(WY)	2004	2004	2004	2004	2003	2004	2003	2003	2004	2003	2003	2004

e Estimated.

CONESTOGA RIVER BASIN

01576712 LITTLE CONESTOGA CREEK NEAR MILLERSVILLE, PA--Continued

SUMMARY STATISTICS	FOR 2004 WATER YEAR		WATER YEARS 2003 - 2004	
ANNUAL TOTAL	28814			
ANNUAL MEAN	78.7		78.7	
HIGHEST ANNUAL MEAN			78.7	2004
LOWEST ANNUAL MEAN			78.7	2004
HIGHEST DAILY MEAN	590	Aug 13	744	Sep 23 2003
LOWEST DAILY MEAN	30	Sep 14-17	26	Aug 29,31 2003
ANNUAL SEVEN-DAY MINIMUM	31	Sep 11	29	Aug 25 2003
MAXIMUM PEAK FLOW	1260	Jun 18	1290	Sep 23 2003
MAXIMUM PEAK STAGE	11.99	Jun 18	12.14	Sep 23 2003
INSTANTANEOUS LOW FLOW	22	Sep 14	17	Feb 16 2003
ANNUAL RUNOFF (CFSM)	1.86		1.86	
ANNUAL RUNOFF (INCHES)	25.35		25.29	
10 PERCENT EXCEEDS	116		116	
50 PERCENT EXCEEDS	62		62	
90 PERCENT EXCEEDS	41		41	