



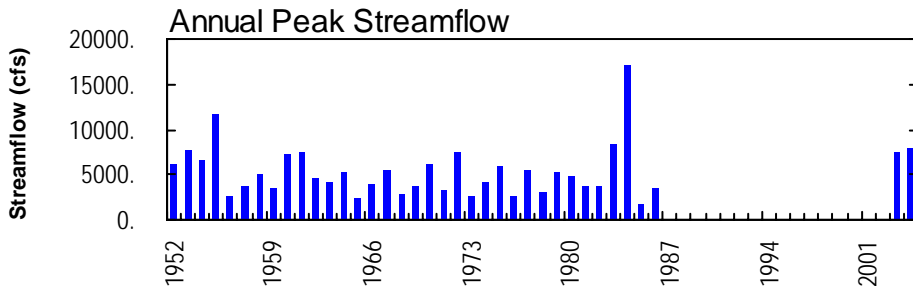
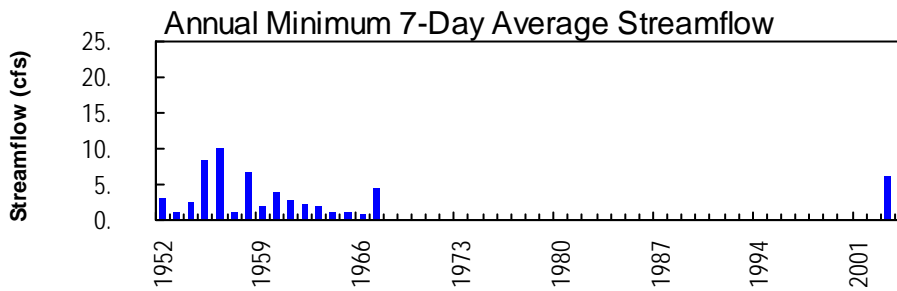
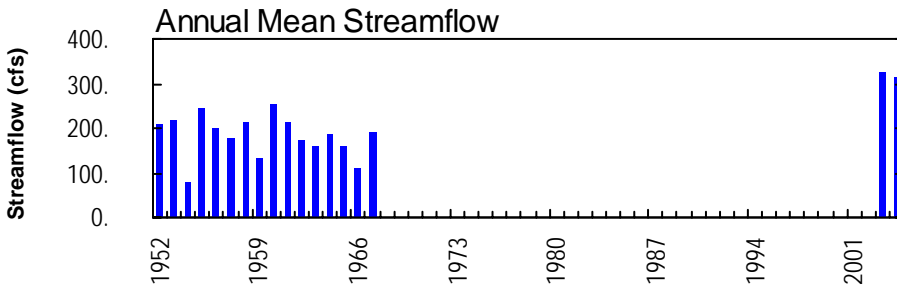
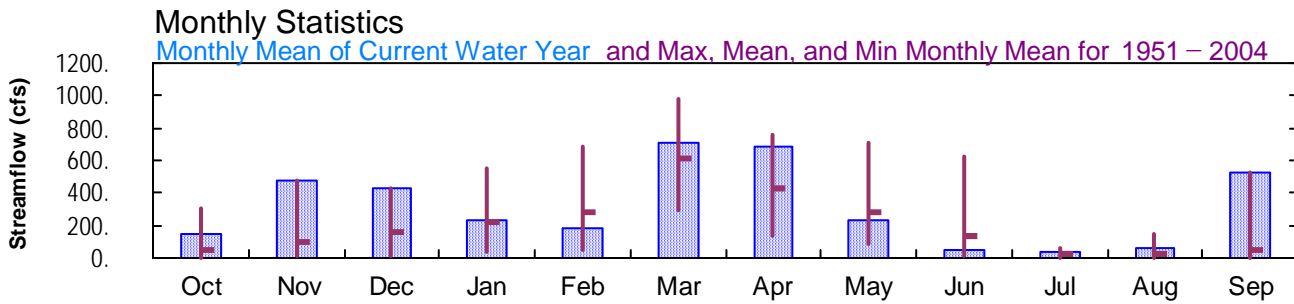
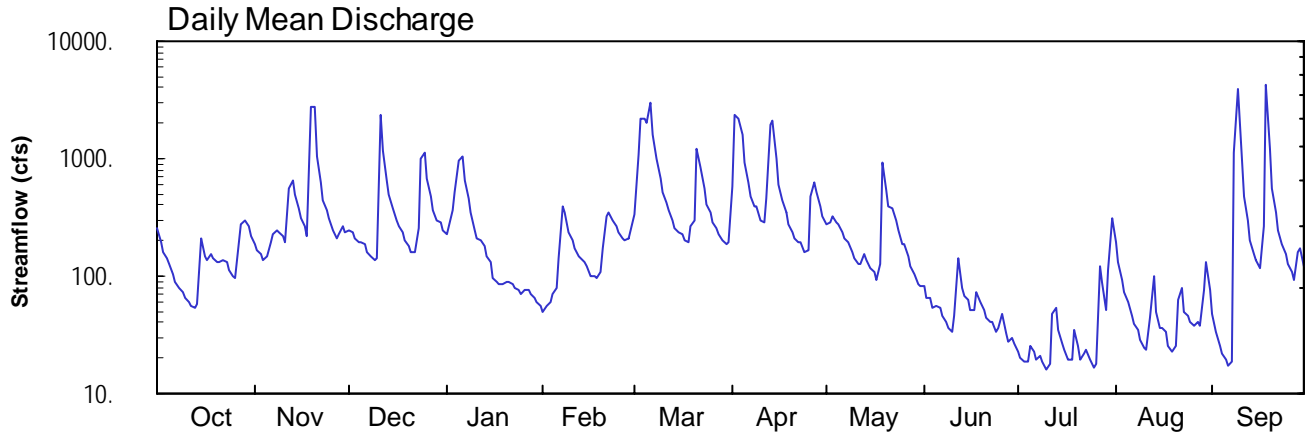
2004 Water Year POTOMAC RIVER BASIN

01601000 Wills Creek below Hyndman, PA

Latitude: 39° 48 ' 43"
Bedford County

Longitude: 078° 43 ' 00"
Datum: 893.37 feet

Hydrologic Unit Code: 02070002
Drainage Area: 146. mi²



POTOMAC RIVER BASIN

01601000 WILLS CREEK BELOW HYNDMAN, PA

LOCATION.--Lat 39°48'43", long 78°43'00", Bedford County, Hydrologic Unit 02070004, on left bank 150 ft upstream from county highway bridge, 150 ft downstream from Pennsylvania Railroad bridge, 0.35 mi downstream from Little Wills Creek, and 0.5 mi south of Hyndman.

DRAINAGE AREA.--146 mi².

PERIOD OF RECORD.--Occasional low-flow measurements, water years 1983-91, and crest-stage partial-record, water years 1968-86. June 1951 to September 1967, April 2002 to current year.

GAGE.--Water-stage recorder and crest-stage gage. Datum of gage is 893.37 ft above National Geodetic Vertical Datum of 1929 (Pennsylvania Railroad Bench mark).

REMARKS.--Records good except those for estimated daily discharges, which are poor. Several measurements of water temperature were made during the year. Satellite telemetry at station.

PEAK DISCHARGES FOR CURRENT YEAR.--Peak discharges greater than a base discharge of 2,100 ft³/s and maximum (*):

Date	Time	Discharge ft ³ /s	Gage Height (ft)	Date	Time	Discharge ft ³ /s	Gage Height (ft)
Nov. 19	1500	6,330	7.24	Apr. 3	0130	2,510	4.65
Dec. 11	0430	3,240	5.08	Apr. 13	1930	3,150	5.03
Mar. 2	2130	2,960	4.92	Sept. 8	2330	*7,870	*8.34
Mar. 6	0630	3,580	5.28	Sept. 18	0230	7,200	7.86

DISCHARGE, CUBIC FEET PER SECOND, WATER YEAR OCTOBER 2003 TO SEPTEMBER 2004
DAILY MEAN VALUES

DAY	OCT	NOV	DEC	JAN	FEB	MAR	APR	MAY	JUN	JUL	AUG	SEP
1	250	189	246	230	e50	e330	584	271	81	23	195	e48
2	197	169	232	261	e55	e1100	2330	286	64	20	130	e34
3	158	152	213	359	e60	2150	2150	324	65	19	93	e26
4	142	138	198	516	e70	2180	1600	281	53	19	72	22
5	125	150	197	980	e80	2020	910	273	55	25	61	19
6	104	196	188	1040	e140	3030	617	240	53	22	46	18
7	90	231	163	653	e390	1590	471	210	46	19	40	19
8	80	243	147	452	e350	993	392	192	41	21	35	1130
9	72	237	136	354	e240	688	386	162	37	19	29	3850
10	65	215	142	245	e200	525	304	142	34	16	25	1040
11	60	198	2350	e210	e170	422	283	127	45	18	23	477
12	56	556	1190	e200	e150	367	459	125	143	48	44	293
13	53	657	663	e180	e140	299	1930	156	78	54	99	203
14	58	499	491	e150	e130	257	2100	135	67	34	e49	154
15	213	379	375	e130	e120	233	987	118	63	27	e36	139
16	146	307	295	e95	e100	224	611	108	52	23	e36	119
17	138	261	266	e90	e100	204	439	93	51	20	e34	269
18	155	218	233	e85	e95	195	344	124	73	20	e26	4310
19	140	2750	202	e85	e110	262	281	927	60	35	e23	1200
20	134	2760	183	e90	e170	298	240	531	52	25	e26	563
21	130	1060	159	e90	e320	1230	210	395	45	19	e63	352
22	136	628	162	e85	e350	865	196	371	41	22	e79	248
23	132	436	258	e80	e300	557	193	298	40	24	e50	187
24	111	358	1000	e75	e270	407	162	241	33	19	e46	151
25	99	305	1140	e70	e240	343	165	190	37	17	e40	126
26	97	245	686	e75	e210	287	479	186	48	18	e38	106
27	191	211	468	e75	e200	259	633	148	32	123	e40	94
28	275	228	359	e70	e210	228	519	123	28	91	e38	161
29	301	262	300	e65	e250	200	385	103	30	52	e76	172
30	261	239	289	e60	---	187	317	86	26	111	e132	120
31	216	---	249	e55	---	197	---	82	---	308	e77	---
TOTAL	4385	14477	13180	7205	5270	22127	20677	7048	1573	1311	1801	15650
MEAN	141	483	425	232	182	714	689	227	52.4	42.3	58.1	522
MAX	301	2760	2350	1040	390	3030	2330	927	143	308	195	4310
MIN	53	138	136	55	50	187	162	82	26	16	23	18
CFSM	0.97	3.31	2.91	1.59	1.24	4.89	4.72	1.56	0.36	0.29	0.40	3.57
IN.	1.12	3.69	3.36	1.84	1.34	5.64	5.27	1.80	0.40	0.33	0.46	3.99

STATISTICS OF MONTHLY MEAN DATA FOR PERIOD OF DAILY RECORD, BY WATER YEAR (WY)

	50.7	103	155	220	276	614	432	287	131	28.8	29.9	55.1
MEAN	50.7	103	155	220	276	614	432	287	131	28.8	29.9	55.1
MAX	311	483	425	549	689	983	762	707	621	59.9	146	522
(WY)	1955	2004	2004	1952	1961	1963	1964	2003	2003	1960	1955	2004
MIN	3.15	6.49	10.2	36.5	47.6	294	131	80.3	15.3	3.40	2.68	3.42
(WY)	1964	1954	1966	1954	1954	1957	1954	1963	1965	1965	1957	1957

e Estimated.

POTOMAC CREEK BASIN

01601000 WILLS CREEK BELOW HYNDMAN, PA--Continued

SUMMARY STATISTICS	FOR 2003 CALENDAR YEAR		FOR 2004 WATER YEAR		FOR PERIOD OF DAILY RECORD	
ANNUAL TOTAL	135123.4		114704			
ANNUAL MEAN	370		313		199	
HIGHEST ANNUAL MEAN					325	2003
LOWEST ANNUAL MEAN					80.4	1954
HIGHEST DAILY MEAN	3990	Jun 4	4310	Sep 18	4710	Mar 6 1967
LOWEST DAILY MEAN	5.3	Aug 25	16	Jul 10	0.70	Sep 12 1966
ANNUAL SEVEN-DAY MINIMUM	6.8	Aug 19	20	Jul 5	0.84	Aug 5 1966
MAXIMUM PEAK FLOW			a7870	Sep 8	a17100	Jun 21 1984
MAXIMUM PEAK STAGE			8.34	Sep 8	13.76	Jun 21 1984
ANNUAL RUNOFF (CFSM)	2.54		2.15		1.36	
ANNUAL RUNOFF (INCHES)	34.43		29.23		18.48	
10 PERCENT EXCEEDS	962		639		499	
50 PERCENT EXCEEDS	193		162		68	
90 PERCENT EXCEEDS	20		31		5.9	

a From rating curve extended above 3,050 ft³/s.