



# 2004 Water Year OHIO RIVER BASIN

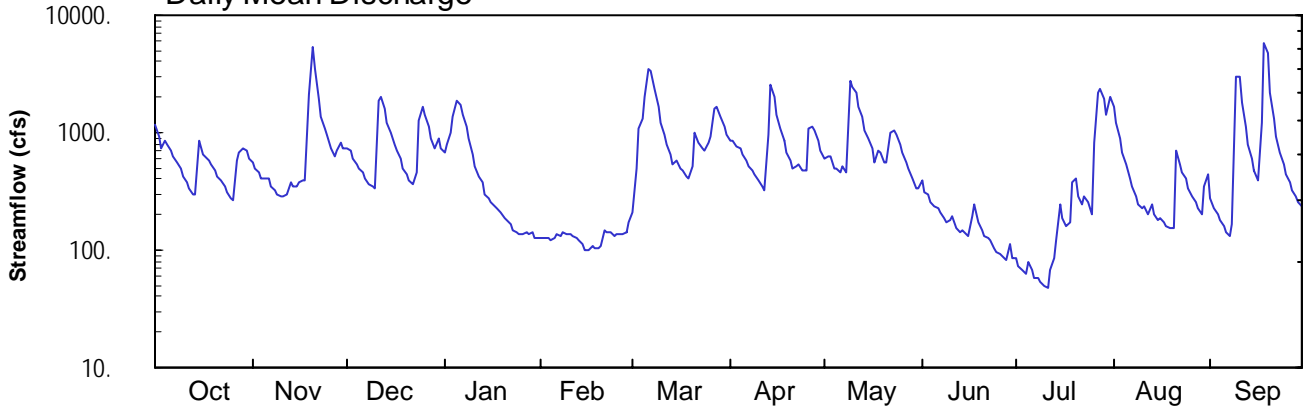
## 03007800 Allegheny River at Port Alleghany, PA

Latitude: 41° 49 ' 07"  
Mckean County

Longitude: 078° 17 ' 35"  
Datum: 1454.88 feet

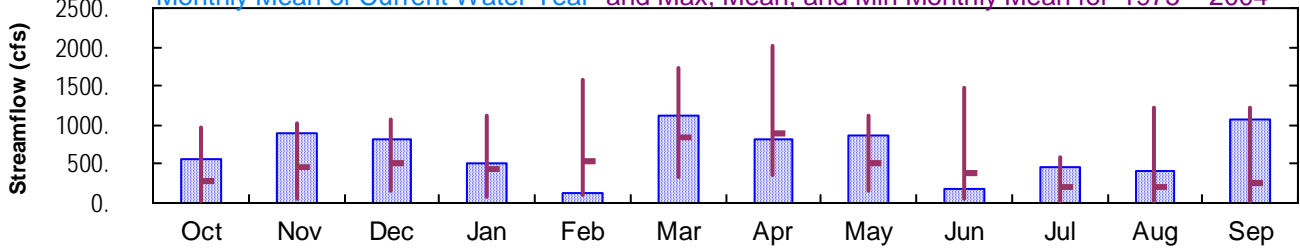
Hydrologic Unit Code: 05010001  
Drainage Area: 248. mi<sup>2</sup>

### Daily Mean Discharge

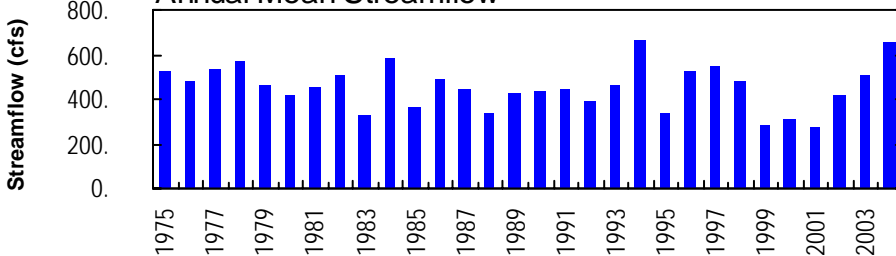


### Monthly Statistics

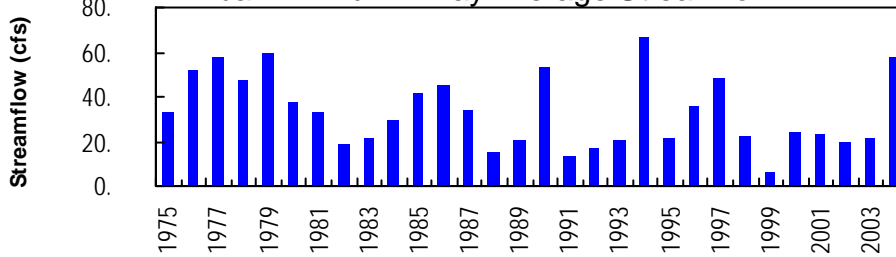
Monthly Mean of Current Water Year and Max, Mean, and Min Monthly Mean for 1975 – 2004



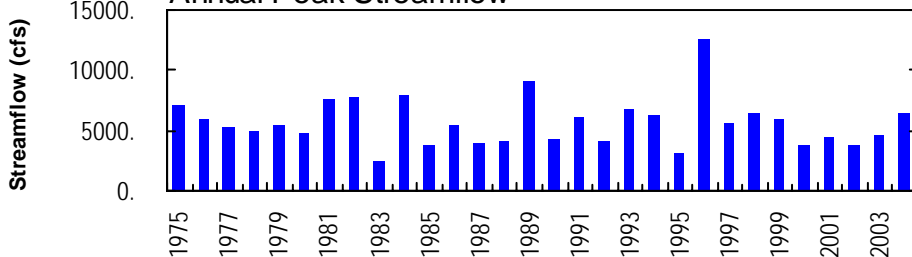
### Annual Mean Streamflow



### Annual Minimum 7-Day Average Streamflow



### Annual Peak Streamflow



**SURFACE-WATER STATION RECORDS**

**OHIO RIVER MAIN STEM**

**03007800 ALLEGHENY RIVER AT PORT ALLEGANY, PA**

**LOCATION.**--Lat 41°49'07", long 78°17'35", McKean County, Hydrologic Unit 05010001, on right bank 40 ft upstream from bridge on U.S. Highway 6 at Port Allegany, 1.1 mi upstream from Twomile Creek, 1.4 mi downstream from Allegheny Portage Creek, at mile 285.5.

**DRAINAGE AREA.**--248 mi<sup>2</sup>.

**PERIOD OF RECORD.**--October 1974 to current year. Discharge measurements obtained by U.S. Army Corps of Engineers March 1971 to October 1974.

**GAGE.**--Water-stage recorder. Datum of gage is 1,454.88 ft above National Geodetic Vertical Datum of 1929.

**REMARKS.**--Records good except those for estimated daily discharges, which are poor. Several measurements of water temperature were made during the year. U.S. Army Corps of Engineers satellite telemetry at station.

**EXTREMES OUTSIDE PERIOD OF RECORD.**--Flood of June 23, 1972 reached a stage of at least 17.5 ft, discharge, 21,700 ft<sup>3</sup>/s, from U.S. Army Corps of Engineers discharge measurement. Actual peak discharge may have been greater.

**PEAK DISCHARGES FOR CURRENT YEAR.**--Peak discharges greater than a base discharge of 2,500 ft<sup>3</sup>/s and maximum (\*):

Date	Time	Discharge ft <sup>3</sup> /s	Gage Height (ft)	Date	Time	Discharge ft <sup>3</sup> /s	Gage Height (ft)
Nov. 20	1100	5,820	12.10	July 27	1815	2,830	8.79
Mar. 6	2100	3,780	10.23	Sept. 9	2030	3,870	10.34
Apr. 14	0600	2,640	8.46	Sept. 18	1830	*6,460	*12.60
May 9	1100	3,400	9.71				

**DISCHARGE, CUBIC FEET PER SECOND, WATER YEAR OCTOBER 2003 TO SEPTEMBER 2004  
DAILY MEAN VALUES**

DAY	OCT	NOV	DEC	JAN	FEB	MAR	APR	MAY	JUN	JUL	AUG	SEP
1	1170	554	742	689	e127	213	869	597	391	84	1640	272
2	936	501	693	795	e127	487	839	621	304	74	1220	226
3	736	456	599	987	e127	1090	765	633	298	68	895	198
4	841	408	534	1350	e120	1320	733	505	254	63	673	176
5	792	401	491	1870	e127	2030	659	502	238	78	544	158
6	695	406	461	1710	e134	3420	575	450	230	68	412	141
7	637	351	409	1400	e130	3310	524	520	209	59	342	130
8	557	323	366	1120	e141	2400	478	450	188	57	291	163
9	487	299	346	885	138	1630	444	2800	171	54	249	2930
10	425	286	334	661	138	1190	387	2420	178	50	224	2930
11	373	283	1850	e518	129	945	348	2210	197	47	235	1770
12	331	300	2020	e431	127	797	328	1680	157	68	203	1140
13	302	371	1590	e373	121	642	970	1380	139	85	244	807
14	296	349	1220	e301	112	545	2530	1060	145	121	205	593
15	840	352	988	e279	e99	582	2010	907	139	243	179	470
16	651	370	778	e257	e99	497	1430	724	129	189	185	394
17	615	385	699	e235	e107	476	1070	567	191	162	171	1210
18	577	389	594	e229	103	432	841	699	243	174	160	5880
19	536	2080	503	e214	103	408	678	682	174	373	154	4780
20	470	5410	442	e185	106	519	572	567	149	403	155	2180
21	426	3470	388	e178	e148	989	487	565	131	291	699	1330
22	393	1980	361	e163	e142	810	514	1020	125	245	537	929
23	354	1370	466	e149	e144	738	528	1020	119	288	465	690
24	313	1080	1240	e141	e131	706	482	978	104	253	400	540
25	279	968	1660	e134	e138	810	476	787	97	200	339	444
26	267	746	1420	e134	e138	925	1080	690	94	812	286	374
27	571	637	1110	e141	e136	1570	1130	564	84	2150	251	320
28	666	691	890	e134	e142	1680	1050	499	83	2390	228	287
29	743	828	740	e141	170	1390	858	401	113	1910	206	259
30	705	729	881	e127	---	1100	703	337	87	1400	345	234
31	613	---	735	e127	---	976	---	339	---	2020	439	---
TOTAL	17597	26773	25550	16058	3704	34627	24358	27174	5161	14479	12576	31955
MEAN	568	892	824	518	128	1117	812	877	172	467	406	1065
MAX	1170	5410	2020	1870	170	3420	2530	2800	391	2390	1640	5880
MIN	267	283	334	127	99	213	328	337	83	47	154	130
CFSM	2.29	3.60	3.32	2.09	0.52	4.50	3.27	3.53	0.69	1.88	1.64	4.30
IN.	2.64	4.02	3.83	2.41	0.56	5.19	3.65	4.08	0.77	2.17	1.89	4.79

**STATISTICS OF MONTHLY MEAN DATA FOR WATER YEARS 1975 - 2004, BY WATER YEAR (WY)**

MEAN	277	457	517	439	532	837	893	505	371	206	195	248
MAX	964	1018	1082	1119	1572	1730	2006	1127	1484	598	1230	1226
(WY)	1991	1997	1978	1998	1976	1979	1993	1996	1989	1977	2003	1977
MIN	31.2	39.7	150	78.2	98.0	326	359	142	48.5	28.5	15.0	20.7
(WY)	1983	1999	1999	1981	1980	1993	1976	1985	1991	1991	1999	1991

e Estimated.

OHIO RIVER MAIN STEM

03007800 ALLEGHENY RIVER AT PORT ALLEGANY, PA--Continued

SUMMARY STATISTICS	FOR 2003 CALENDAR YEAR		FOR 2004 WATER YEAR		WATER YEARS 1975 - 2004	
ANNUAL TOTAL	239022		240012			
ANNUAL MEAN	655		656		455	
HIGHEST ANNUAL MEAN					670	
LOWEST ANNUAL MEAN					275	
HIGHEST DAILY MEAN	5410	Nov 20	5880	Sep 18	8860	Jan 20 1996
LOWEST DAILY MEAN	60	Jul 17	47	Jul 11	5.4	Sep 5 1999
ANNUAL SEVEN-DAY MINIMUM	81	Jul 11	58	Jul 6	6.4	Aug 31 1999
MAXIMUM PEAK FLOW			6460	Sep 18	<b>a</b> 12600	Jan 19 1996
MAXIMUM PEAK STAGE			12.60	Sep 18	<b>b</b> 15.37	Jan 19 1996
INSTANTANEOUS LOW FLOW			45	Jul 11,12	5.1	Sep 6 1999
ANNUAL RUNOFF (CFSM)	2.64		2.64		1.84	
ANNUAL RUNOFF (INCHES)	35.85		36.00		24.95	
10 PERCENT EXCEEDS	1610		1410		1030	
50 PERCENT EXCEEDS	371		443		250	
90 PERCENT EXCEEDS	117		127		48	

**a** From rating curve extended above 6,700 ft<sup>3</sup>/s.

**b** From peak-stage indicator.