



# 2004 Water Year CLARION RIVER BASIN

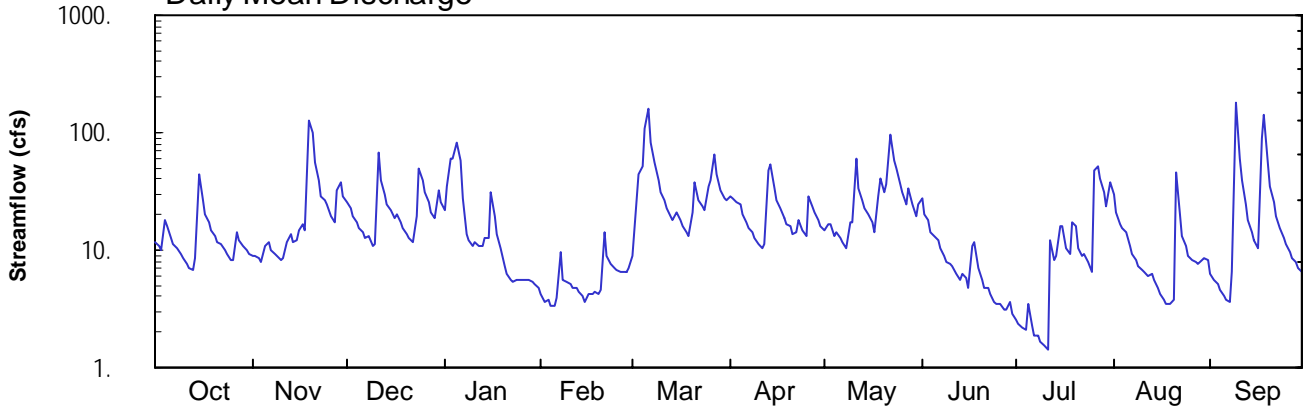
## 03026500 Sevenmile Run near Rasselas, PA

Latitude: 41° 37' 52"  
Mckean County

Longitude: 078° 34' 37"  
Datum: 1690.73 feet

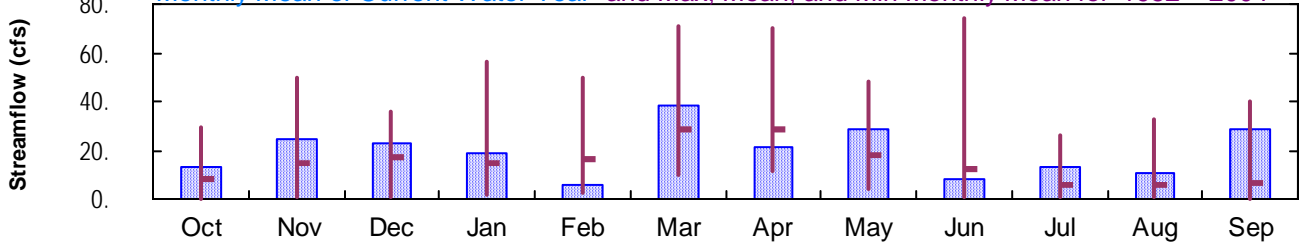
Hydrologic Unit Code: 05010005  
Drainage Area: 7.84 mi<sup>2</sup>

### Daily Mean Discharge

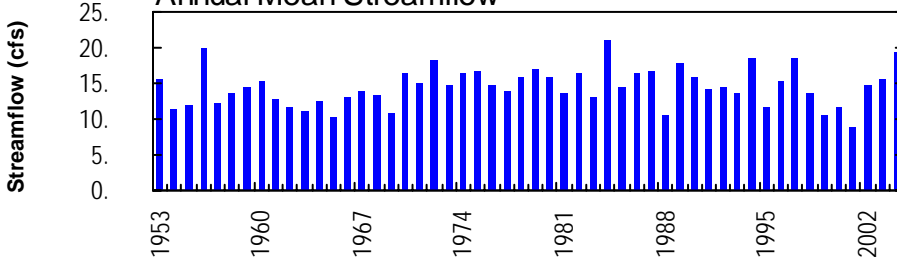


### Monthly Statistics

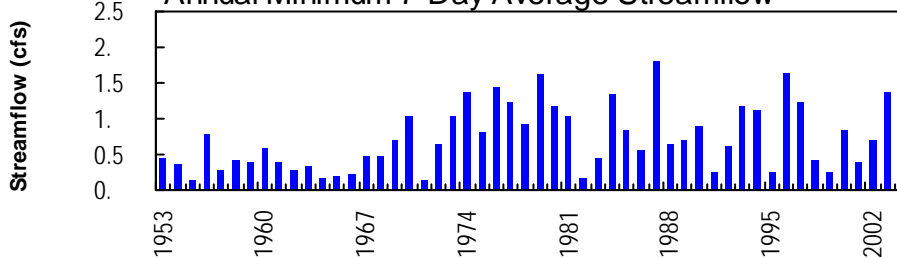
Monthly Mean of Current Water Year and Max, Mean, and Min Monthly Mean for 1952 – 2004



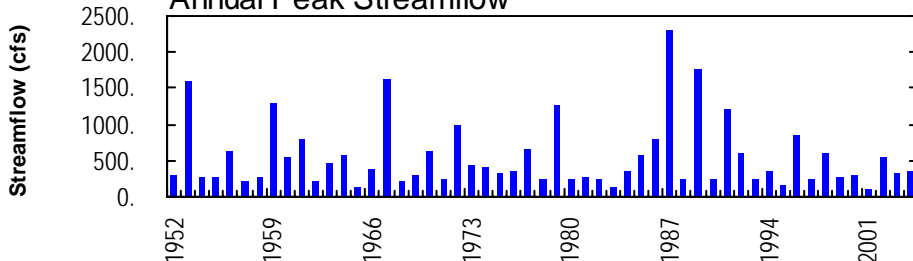
### Annual Mean Streamflow



### Annual Minimum 7-Day Average Streamflow



### Annual Peak Streamflow



**CLARION RIVER BASIN**

**03026500 SEVENMILE RUN NEAR RASSELAS, PA**

**LOCATION.**--Lat 41°37'52", long 78°34'37", McKean County, Hydrologic Unit 05010005, on right bank 300 ft upstream from highway bridge, 600 ft upstream from Fivemile Run, and 3.2 mi northeast of Rasselas.

**DRAINAGE AREA.**--7.84 mi<sup>2</sup>.

**PERIOD OF RECORD.**--October 1951 to current year.

**GAGE.**--Water-stage recorder and concrete control. Datum of gage is 1,690.73 ft above National Geodetic Vertical Datum of 1929.

**REMARKS.**--Records good except those for estimated daily discharges, which are poor. Several measurements of water temperature were made during the year. U.S. Army Corps of Engineers satellite telemetry at station.

**PEAK DISCHARGES FOR CURRENT YEAR.**--Peak discharges greater than a base discharge of 200 ft<sup>3</sup>/s and maximum (\*):

Date	Time	Discharge ft <sup>3</sup> /s	Gage Height (ft)	Date	Time	Discharge ft <sup>3</sup> /s	Gage Height (ft)
Nov. 19	1600	308	4.18	Sept. 9	0700	*360	*4.31
Mar. 6	0500	209	3.84	Sept. 17	2215	301	4.16

**DISCHARGE, CUBIC FEET PER SECOND, WATER YEAR OCTOBER 2003 TO SEPTEMBER 2004  
DAILY MEAN VALUES**

DAY	OCT	NOV	DEC	JAN	FEB	MAR	APR	MAY	JUN	JUL	AUG	SEP
1	12	9.0	26	22	e4.2	8.9	28	15	27	2.5	30	6.3
2	11	9.0	23	36	e3.6	26	28	17	20	2.3	21	5.6
3	10	8.6	19	60	e3.8	44	26	17	18	2.2	17	5.1
4	18	8.0	17	61	e3.4	51	24	13	14	2.1	15	4.6
5	16	11	16	83	e3.4	107	20	14	13	3.4	14	4.1
6	12	12	14	57	e3.9	162	17	13	12	2.3	11	3.8
7	11	10	13	e28	e9.8	83	16	12	11	1.9	9.4	3.6
8	10	9.4	13	e14	e5.6	57	14	11	9.1	1.8	8.4	6.6
9	9.4	8.7	11	e12	e5.3	39	13	17	8.0	1.7	7.4	182
10	8.5	8.3	11	e11	e5.2	31	11	17	7.7	1.6	6.8	61
11	7.7	8.7	67	e11	e4.7	27	10	61	7.3	1.4	6.5	40
12	7.1	12	40	e11	e4.7	23	11	34	6.2	12	6.1	25
13	6.7	14	29	e11	e4.5	19	47	27	5.5	8.1	6.2	18
14	8.6	12	25	e13	e4.1	18	53	22	6.3	8.8	5.6	14
15	43	12	22	e13	e3.6	21	34	20	5.7	16	4.8	12
16	27	15	19	31	e4.2	18	27	17	4.7	16	4.3	10
17	21	16	20	e19	e4.3	16	22	14	11	10	3.8	90
18	17	15	18	e14	e4.4	14	19	29	12	9.4	3.5	143
19	15	126	15	e10	e4.3	13	17	40	7.0	17	3.5	53
20	13	99	14	e7.2	4.6	21	16	30	5.5	16	3.8	36
21	12	56	12	e6.3	14	38	14	37	4.7	11	46	26
22	11	39	12	e5.6	e8.7	27	14	95	4.7	8.8	20	20
23	10	29	20	e5.3	e7.7	24	18	59	4.2	9.2	13	15
24	9.2	26	49	e5.7	e7.1	22	15	50	3.7	7.9	11	13
25	8.2	24	40	e5.6	e6.7	34	13	36	3.5	6.4	9.1	11
26	8.4	19	31	e5.6	e6.6	40	29	31	3.4	47	8.2	9.7
27	14	17	25	e5.6	e6.6	65	23	25	3.1	52	7.8	8.6
28	12	32	21	e5.6	e6.6	43	21	34	3.1	41	7.6	8.0
29	11	37	19	e5.4	e6.9	32	18	24	3.7	31	8.1	7.2
30	10	28	33	e5.2	---	27	16	20	2.8	24	8.6	6.5
31	9.3	---	25	e4.7	---	26	---	25	---	37	8.1	---
TOTAL	399.1	730.7	719	584.8	162.5	1176.9	634	876	247.9	411.8	335.6	848.7
MEAN	12.9	24.4	23.2	18.9	5.60	38.0	21.1	28.3	8.26	13.3	10.8	28.3
MAX	43	126	67	83	14	162	53	95	27	52	46	182
MIN	6.7	8.0	11	4.7	3.4	8.9	10	11	2.8	1.4	3.5	3.6
CFSM	1.64	3.11	2.96	2.41	0.71	4.84	2.70	3.60	1.05	1.69	1.38	3.61
IN.	1.89	3.47	3.41	2.77	0.77	5.58	3.01	4.16	1.18	1.95	1.59	4.03

**STATISTICS OF MONTHLY MEAN DATA FOR WATER YEARS 1952 - 2004, BY WATER YEAR (WY)**

MEAN	8.00	14.5	17.2	14.7	16.6	28.3	28.7	17.6	11.9	5.60	5.56	6.52
MAX	29.7	49.5	35.9	56.4	49.9	70.8	70.6	47.8	74.0	26.0	32.8	39.7
(WY)	1971	1986	1978	1952	1976	1964	1970	1953	1989	1992	1956	1987
MIN	0.32	0.66	0.94	1.55	2.22	9.85	11.2	4.05	1.14	0.50	0.52	0.28
(WY)	1965	1965	1961	1961	1987	1993	1976	1985	1991	1991	1966	1964

e Estimated.

CLARION RIVER BASIN

03026500 SEVENMILE RUN NEAR RASSELAS, PA--Continued

SUMMARY STATISTICS	FOR 2003 CALENDAR YEAR		FOR 2004 WATER YEAR		WATER YEARS 1952 - 2004	
ANNUAL TOTAL	6490.2		7127.0			
ANNUAL MEAN	17.8		19.5		14.5	
HIGHEST ANNUAL MEAN					21.1	
LOWEST ANNUAL MEAN					8.92	
HIGHEST DAILY MEAN	175	Mar 21	182	Sep 9	465	Jun 20 1989
LOWEST DAILY MEAN	1.5	Jul 20	1.4	Jul 11	0.07	Sep 21 1955
ANNUAL SEVEN-DAY MINIMUM	1.8	Jul 14	2.0	Jul 5	0.14	Sep 16 1955
MAXIMUM PEAK FLOW			360	Sep 9	a2300	Sep 13 1987
MAXIMUM PEAK STAGE			4.31	Sep 9	5.30	Sep 13 1987
INSTANTANEOUS LOW FLOW			1.3	Jul 11,12	0.07	Sep 21 1955
ANNUAL RUNOFF (CFSM)	2.27		2.48		1.85	
ANNUAL RUNOFF (INCHES)	30.80		33.82		25.16	
10 PERCENT EXCEEDS	37		40		32	
50 PERCENT EXCEEDS	12		13		8.2	
90 PERCENT EXCEEDS	4.2		4.3		1.0	

a From rating curve extended above 600 ft<sup>3</sup>/s on basis of slope-area measurement at gage height 4.60 ft and contracted-opening measurement at gage height 5.02 ft.