



2004 Water Year CLARION RIVER BASIN

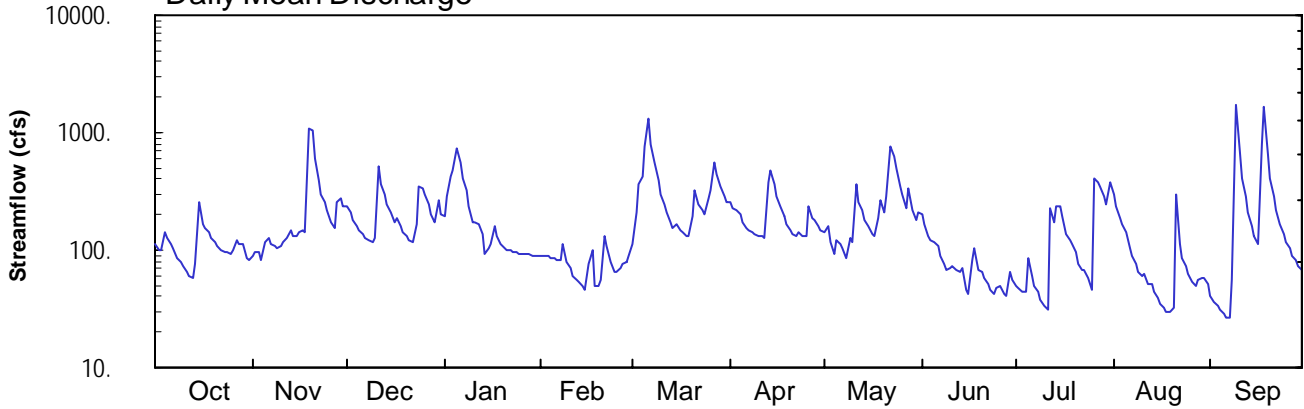
03028000 West Branch Clarion River at Wilcox, PA

Latitude: 41° 34' 31"
Elk County

Longitude: 078° 41' 33"
Datum: 1502.02 feet

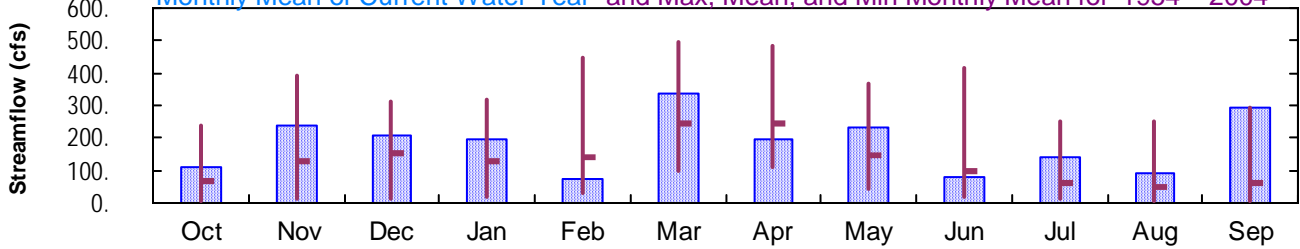
Hydrologic Unit Code: 05010005
Drainage Area: 63. mi²

Daily Mean Discharge

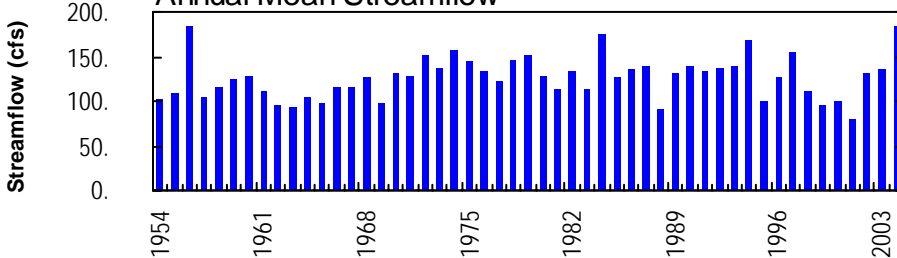


Monthly Statistics

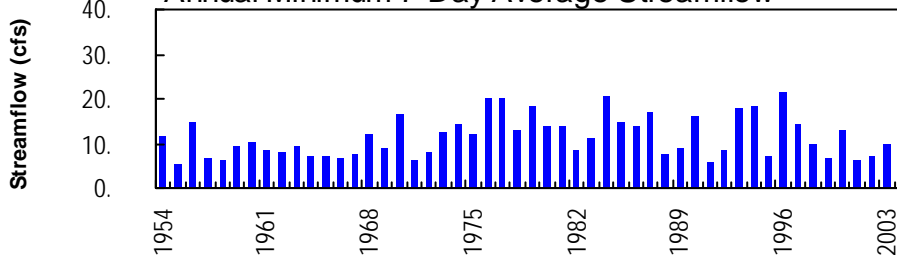
Monthly Mean of Current Water Year and Max, Mean, and Min Monthly Mean for 1954 – 2004



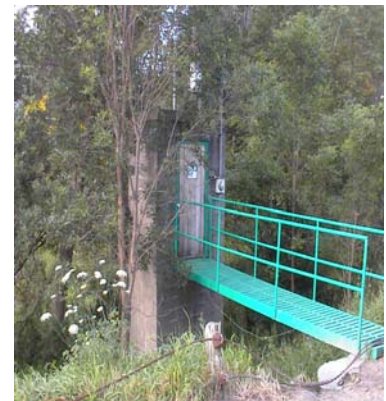
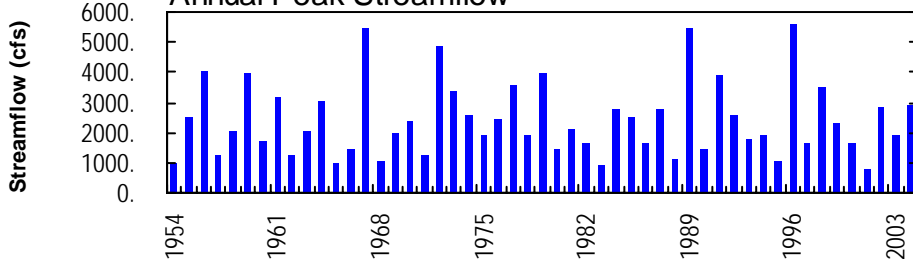
Annual Mean Streamflow



Annual Minimum 7-Day Average Streamflow



Annual Peak Streamflow



CLARION RIVER BASIN

03028000 WEST BRANCH CLARION RIVER AT WILCOX, PA

LOCATION.--Lat 41°34'31", long 78°41'33", Elk County, Hydrologic Unit 05010005, on right bank 20 ft downstream from bridge on Township Route 359 at Wilcox, 100 ft downstream from Wilson Run, and 0.1 mi upstream from Penn Central Railroad bridge.

DRAINAGE AREA.--63.0 mi².

PERIOD OF RECORD.--October 1953 to current year.

GAGE.--Water-stage recorder. Datum of gage is 1,502.02 ft above National Geodetic Vertical Datum of 1929. Prior to Nov. 18, 1953, nonrecording gage at site 20 ft upstream at same datum. Nov. 18 to Dec. 8, 1953, nonrecording gage at same site and datum.

REMARKS.--Records good except those for estimated daily discharges, which are poor. Several measurements of water temperature were made during the year. U.S. Army Corps of Engineers satellite telemetry at station.

PEAK DISCHARGES FOR CURRENT YEAR.--Peak discharges greater than a base discharge of 1,000 ft³/s and maximum (*):

Date	Time	Discharge ft ³ /s	Gage Height (ft)	Date	Time	Discharge ft ³ /s	Gage Height (ft)
Nov. 19	1745	2,580	6.44	July 26	1830	1,280	4.63
Mar. 6	0700	1,520	4.99	Sept. 9	1000	*2,920	*6.92
May 22	1430	1,430	4.86	Sept. 17	2315	2,760	6.70

**DISCHARGE, CUBIC FEET PER SECOND, WATER YEAR OCTOBER 2003 TO SEPTEMBER 2004
DAILY MEAN VALUES**

DAY	OCT	NOV	DEC	JAN	FEB	MAR	APR	MAY	JUN	JUL	AUG	SEP
1	111	90	235	193	e88	110	250	142	205	49	304	41
2	100	94	210	287	e88	211	228	160	163	48	240	36
3	98	95	178	418	e87	358	220	e116	e133	45	185	33
4	140	82	157	481	e85	417	203	e91	e121	43	165	31
5	e125	115	148	723	e85	754	174	e123	e116	85	140	29
6	e114	124	139	556	e83	1330	155	e114	e107	61	105	27
7	e103	112	125	411	e83	802	148	e105	e89	49	90	27
8	e87	107	121	326	e112	554	143	e87	e76	43	76	56
9	80	105	118	239	e78	386	134	e128	e69	38	66	1720
10	73	108	124	173	e70	298	133	e116	e71	34	59	694
11	66	116	523	174	e60	242	131	365	e74	31	62	409
12	61	128	361	166	e55	207	125	253	e67	227	52	285
13	58	147	293	135	e53	171	383	216	e64	173	51	209
14	76	130	249	e93	e50	155	477	181	e71	241	45	160
15	251	132	211	e104	e45	169	360	161	e46	241	39	133
16	166	142	175	e112	e75	148	288	138	e42	195	35	113
17	153	149	190	e163	e100	143	237	130	e83	135	32	787
18	142	143	161	e129	e50	132	193	188	e103	122	30	1650
19	129	1100	144	e113	e50	130	163	263	e69	112	30	651
20	115	1030	133	e105	e55	198	150	208	e64	95	32	404
21	109	595	121	e100	130	326	134	285	e59	77	298	287
22	101	400	118	e98	108	243	134	751	e52	68	112	215
23	98	294	166	e96	e80	215	144	620	e46	68	85	167
24	98	254	351	e94	e65	205	133	495	43	57	72	138
25	94	217	339	e93	e65	274	133	351	48	45	63	118
26	101	175	293	e93	e70	327	238	293	49	404	54	102
27	123	156	245	e92	e75	555	189	225	42	384	50	89
28	114	250	202	e92	e80	435	180	341	41	355	56	81
29	111	272	175	e90	e90	352	161	220	66	289	59	74
30	86	240	267	e89	---	291	145	183	55	245	59	67
31	84	---	205	e89	---	258	---	213	---	370	51	---
TOTAL	3367	7102	6477	6127	2215	10396	5886	7262	2334	4429	2797	8833
MEAN	109	237	209	198	76.4	335	196	234	77.8	143	90.2	294
MAX	251	1100	523	723	130	1330	477	751	205	404	304	1720
MIN	58	82	118	89	45	110	125	87	41	31	30	27
CFSM	1.72	3.76	3.32	3.14	1.21	5.32	3.11	3.72	1.23	2.27	1.43	4.67
IN.	1.99	4.19	3.82	3.62	1.31	6.14	3.48	4.29	1.38	2.62	1.65	5.22

STATISTICS OF MONTHLY MEAN DATA FOR WATER YEARS 1954 - 2004, BY WATER YEAR (WY)

MEAN	70.4	126	153	128	143	242	246	146	96.6	58.8	51.9	59.4
MAX	236	390	311	319	448	494	483	369	417	252	249	294
(WY)	1982	1986	1978	1998	1976	1964	1970	2002	1972	1992	1956	2004
MIN	7.60	12.9	12.4	18.5	27.6	96.4	109	40.9	20.4	12.3	8.30	7.68
(WY)	1964	1965	1961	1961	1987	1969	1976	1985	1991	1955	1991	1955

e Estimated.

CLARION RIVER BASIN

03028000 WEST BRANCH CLARION RIVER AT WILCOX, PA--Continued

SUMMARY STATISTICS	FOR 2003 CALENDAR YEAR		FOR 2004 WATER YEAR		WATER YEARS 1954 - 2004	
ANNUAL TOTAL	57547		67225			
ANNUAL MEAN	158		184		127	
HIGHEST ANNUAL MEAN					184	
LOWEST ANNUAL MEAN					80.4	
HIGHEST DAILY MEAN	1350	Mar 21	1720	Sep 9	2870	Jun 23 1972
LOWEST DAILY MEAN	15	Jul 17	27	Sep 6,7	4.5	Sep 21 1955
ANNUAL SEVEN-DAY MINIMUM	20	Jul 12	32	Sep 1	5.2	Sep 16 1955
MAXIMUM PEAK FLOW			2920	Sep 9	b 5590	Jan 19 1996
MAXIMUM PEAK STAGE			6.92	Sep 9	c 10.23	Jan 19 1996
INSTANTANEOUS LOW FLOW			26	Sep 7,8	4.2	Sep 21 1955
ANNUAL RUNOFF (CFSM)	2.50		2.92		2.01	
ANNUAL RUNOFF (INCHES)	33.98		39.69		27.30	
10 PERCENT EXCEEDS	294		359		288	
50 PERCENT EXCEEDS	114		128		75	
90 PERCENT EXCEEDS	41		50		15	

a Also 2004.

b From rating curve extended above 3,000 ft³/s.

c From peak-stage indicator.