



2004 Water Year MAHONING CREEK BASIN

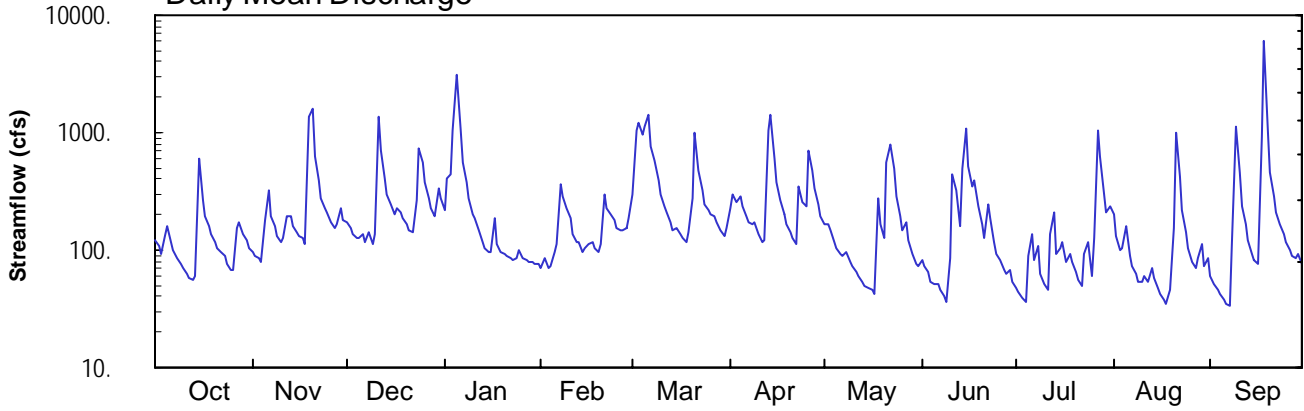
03034500 Little Mahoning Creek at McCormick, PA

Latitude: 40° 50' 10"
Indiana County

Longitude: 079° 06' 37"
Datum: 1164.88 feet

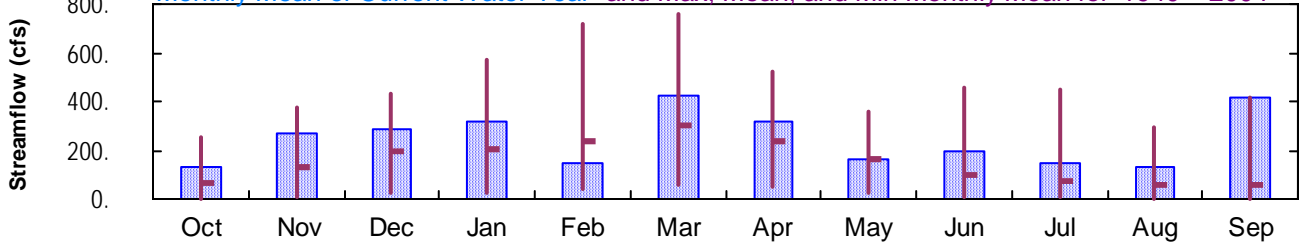
Hydrologic Unit Code: 05010006
Drainage Area: 87.4 mi²

Daily Mean Discharge

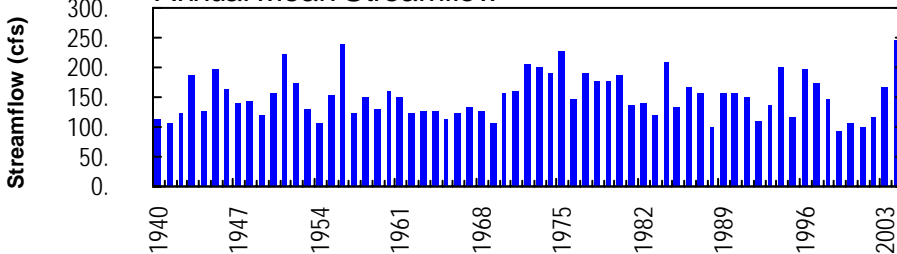


Monthly Statistics

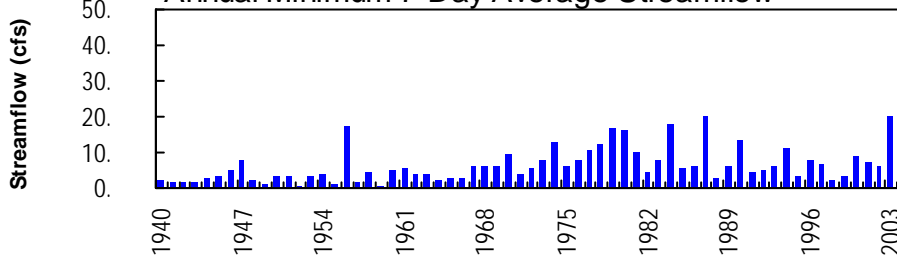
Monthly Mean of Current Water Year and Max, Mean, and Min Monthly Mean for 1940 – 2004



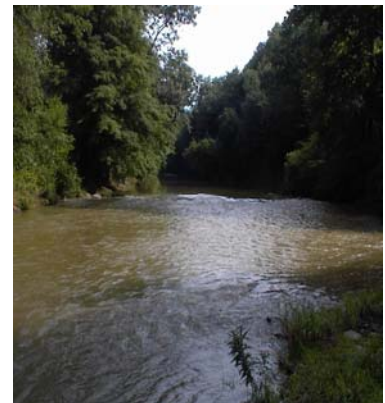
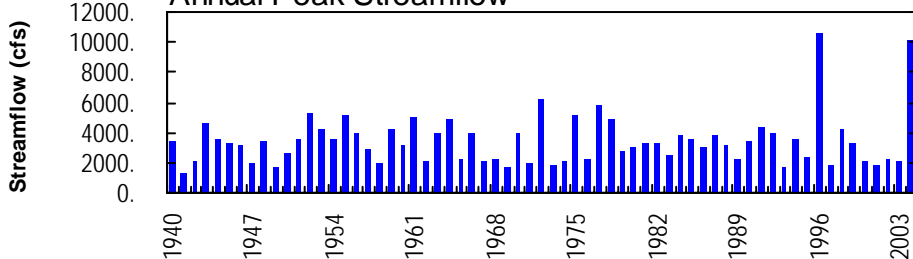
Annual Mean Streamflow



Annual Minimum 7-Day Average Streamflow



Annual Peak Streamflow



MAHONING CREEK BASIN

03034500 LITTLE MAHONING CREEK AT McCORMICK, PA

LOCATION.--Lat 40°50'10", long 79°06'37", Indiana County, Hydrologic Unit 05010006, on left bank 200 ft upstream from bridge on SR 4018 at McCormick, 1 mi west of Georgeville, 1.7 mi upstream from Ross Run, and 4 mi southeast of Smicksburg.

DRAINAGE AREA.--87.4 mi².

PERIOD OF RECORD.--October 1939 to current year.

GAGE.--Water-stage recorder. Datum of gage is 1,164.88 ft above National Geodetic Vertical Datum of 1929 (U.S. Army Corps of Engineers benchmark). Prior to May 10, 1940, nonrecording gage at site 200 ft upstream at same datum.

REMARKS.--Records good except those for estimated daily discharges, which are poor. Several measurements of water temperature were made during the year. U.S. Army Corps of Engineers satellite telemetry at station.

PEAK DISCHARGES FOR CURRENT YEAR.--Peak discharges greater than a base discharge of 2,000 ft³/s and maximum (*):

Date	Time	Discharge ft ³ /s	Gage Height (ft)	Date	Time	Discharge ft ³ /s	Gage Height (ft)
Nov. 19	2300	3,490	10.26	Apr. 14	0100	2,520	9.01
Jan. 5	1000	4,300	11.15	Sept. 18	0430	*10,100	*14.35

**DISCHARGE, CUBIC FEET PER SECOND, WATER YEAR OCTOBER 2003 TO SEPTEMBER 2004
DAILY MEAN VALUES**

DAY	OCT	NOV	DEC	JAN	FEB	MAR	APR	MAY	JUN	JUL	AUG	SEP
1	120	96	173	221	e72	295	230	168	81	47	203	61
2	108	90	156	406	e84	1060	299	164	72	44	131	51
3	93	84	138	439	e70	1230	256	148	64	40	99	46
4	130	78	127	1030	e74	974	287	116	54	37	103	42
5	160	178	128	3070	e98	1120	237	103	51	91	158	38
6	116	321	135	1060	e112	1420	195	92	52	137	89	35
7	100	194	116	562	e356	772	175	87	47	84	72	33
8	87	159	142	373	e283	585	164	96	41	109	62	107
9	77	133	114	280	e228	394	170	79	37	63	53	1110
10	70	117	134	199	e189	293	134	72	84	51	53	463
11	63	125	1350	184	e135	233	118	66	441	45	61	240
12	58	197	696	e150	e117	210	120	59	317	135	54	165
13	55	192	401	e119	e119	172	1030	53	157	208	70	120
14	61	159	302	e105	e98	150	1450	49	493	93	58	93
15	606	141	246	e96	e105	153	608	47	1090	102	48	84
16	268	130	201	e96	e112	135	373	46	508	118	42	76
17	196	128	224	e189	e119	129	262	43	346	80	38	941
18	159	114	209	e111	e105	119	204	275	396	91	35	5910
19	135	1350	183	e96	e98	140	168	165	237	80	47	1000
20	115	1570	167	e93	e112	281	143	128	168	65	156	467
21	104	617	150	e90	e299	1010	126	558	126	56	988	291
22	98	385	144	e87	e227	482	114	779	241	49	422	209
23	88	277	261	e82	e198	316	355	497	184	92	216	164
24	76	227	727	e86	e177	244	257	291	119	119	143	136
25	68	212	567	e99	e155	217	239	191	94	61	102	115
26	68	173	379	e86	e148	199	709	149	81	127	80	100
27	151	154	278	e83	e148	196	473	173	67	1040	69	88
28	172	166	224	e80	e155	172	337	120	62	629	85	85
29	136	223	197	e79	e184	146	242	92	68	304	113	93
30	122	180	337	e76	---	133	193	75	54	207	72	75
31	105	---	271	e75	---	153	---	74	---	233	84	---
TOTAL	3965	8170	8877	9802	4377	13133	9668	5055	5832	4637	4006	12438
MEAN	128	272	286	316	151	424	322	163	194	150	129	415
MAX	606	1570	1350	3070	356	1420	1450	779	1090	1040	988	5910
MIN	55	78	114	75	70	119	114	43	37	37	35	33
CFSM	1.46	3.12	3.28	3.62	1.73	4.85	3.69	1.87	2.22	1.71	1.48	4.74
IN.	1.69	3.48	3.78	4.17	1.86	5.59	4.11	2.15	2.48	1.97	1.71	5.29

STATISTICS OF MONTHLY MEAN DATA FOR WATER YEARS 1940 - 2004, BY WATER YEAR (WY)

MEAN	66.1	133	194	203	236	305	238	166	97.0	73.1	56.9	56.1
MAX	251	378	436	569	715	756	525	358	458	445	294	415
(WY)	1955	1986	1991	1952	1975	1963	1948	1956	1972	1977	1958	2004
MIN	3.39	9.36	21.8	26.2	42.7	59.0	48.7	20.5	9.10	4.71	3.85	2.33
(WY)	1964	1999	1961	1940	1993	1969	1946	1941	1949	1966	1957	1952

e Estimated.

MAHONING CREEK BASIN

03034500 LITTLE MAHONING CREEK AT McCORMICK, PA--Continued

SUMMARY STATISTICS	FOR 2003 CALENDAR YEAR		FOR 2004 WATER YEAR		WATER YEARS 1940 - 2004	
ANNUAL TOTAL	71749		89960			
ANNUAL MEAN	197		246		152	
HIGHEST ANNUAL MEAN					246	
LOWEST ANNUAL MEAN					92.2	
HIGHEST DAILY MEAN	e1960	Jan 2	5910	Sep 18	5910	Sep 18 2004
LOWEST DAILY MEAN	24	Aug 25	33	Sep 7	0.40	Sep 28 1959
ANNUAL SEVEN-DAY MINIMUM	29	Jun 30	44	Sep 1	0.69	Sep 23 1959
MAXIMUM PEAK FLOW			a10100	Sep 18	a10600	Jul 19 1996
MAXIMUM PEAK STAGE			14.35	Sep 18	b14.46	Jul 19 1996
INSTANTANEOUS LOW FLOW			33	Sep 7,8	0.30	Sep 28 1959
ANNUAL RUNOFF (CFSM)	2.25		2.81		1.73	
ANNUAL RUNOFF (INCHES)	30.54		38.29		23.56	
10 PERCENT EXCEEDS	394		494		357	
50 PERCENT EXCEEDS	127		135		75	
90 PERCENT EXCEEDS	44		58		9.4	

a From rating curve extended above 8,500 ft³/s.

b From peak-stage indicator.

e Estimated.