



2004 Water Year MONONGAHELA RIVER BASIN

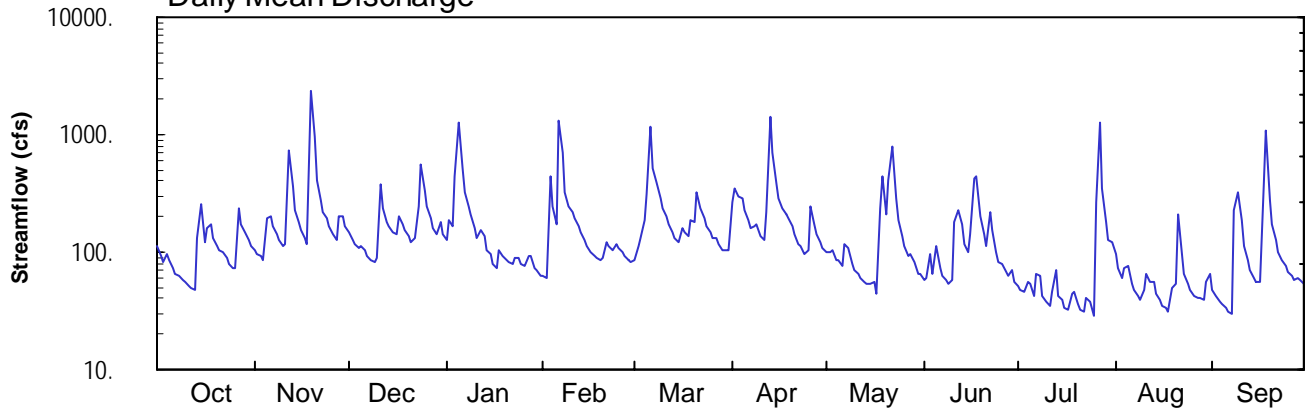
03074500 Redstone Creek at Waltersburg, PA

Latitude: 39° 58 ' 48"
Fayette County

Longitude: 079° 45 ' 52"
Datum: 882.28 feet

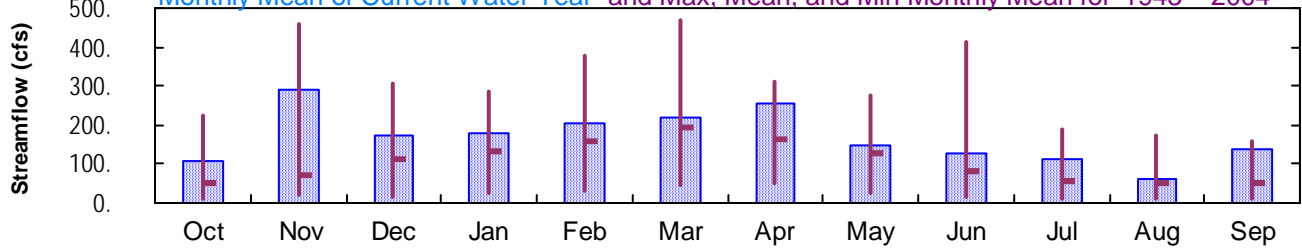
Hydrologic Unit Code: 05020005
Drainage Area: 73.7 mi²

Daily Mean Discharge

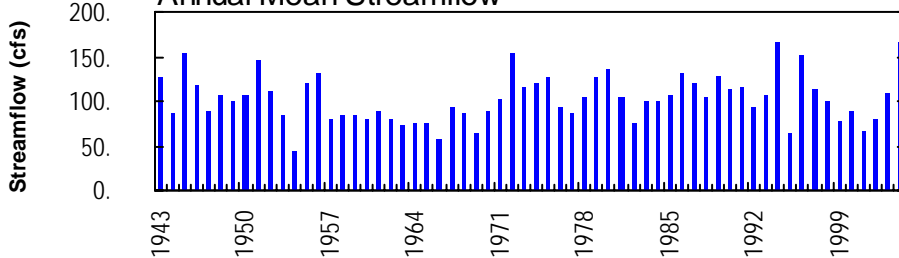


Monthly Statistics

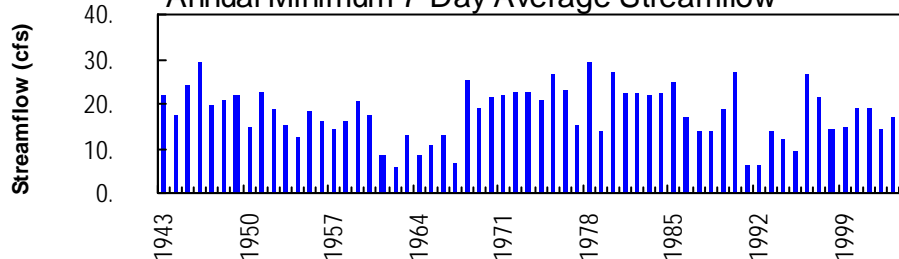
Monthly Mean of Current Water Year and Max, Mean, and Min Monthly Mean for 1943 – 2004



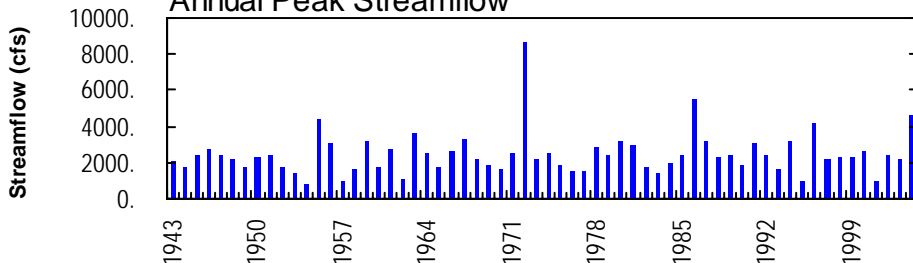
Annual Mean Streamflow



Annual Minimum 7-Day Average Streamflow



Annual Peak Streamflow



MONONGAHELA RIVER BASIN

03074500 REDSTONE CREEK AT WALTERSBURG, PA

LOCATION.--Lat 39°58'48", long 79°45'52", Fayette County, Hydrologic Unit 05020005, on right bank, 15 ft upstream from highway bridge at Waltersburg, 400 ft upstream from Bolden Run, and 0.9 mi upstream from Allen Run.

DRAINAGE AREA.--73.7 mi².

PERIOD OF RECORD.--October 1942 to current year. Monthly discharge only for October 1942, published in WSP 1305.

REVISED RECORDS.--WSP 1435: 1943-45 (M), 1946, 1947 (M), 1948 (P), 1949-50 (M), 1951 (P), 1952 (M).

GAGE.--Water-stage recorder. Datum of gage is 882.28 ft above National Geodetic Vertical Datum of 1929. Prior to Nov. 15, 1973, nonrecording gage 15 ft downstream and Nov. 15, 1973 to Sept. 30, 1997, at present site at datum 1.00 ft. higher.

REMARKS.--Records fair except those for estimated daily discharges, which are poor. Some regulation at low flow by mine pumpage into stream above station. Several measurements of water temperature were made during the year. U.S. Army Corps of Engineers satellite telemetry at station.

PEAK DISCHARGES FOR CURRENT YEAR.--Peak discharges greater than a base discharge of 1,000 ft³/s and maximum (*):

Date	Time	Discharge ft ³ /s	Gage Height (ft)	Date	Time	Discharge ft ³ /s	Gage Height (ft)
Nov. 12	0830	1,490	6.08	Apr. 13	1530	3,290	9.41
Nov. 19	1500	*4,600	*11.13	May 22	0130	1,730	6.57
Dec. 24	1100	1,090	5.17	June 17	2200	1,840	6.78
Jan. 5	0930	2,180	7.47	July 26	1845	1,090	5.19
Feb. 6	1100	2,010	7.13	July 27	1315	3,580	9.83
Mar. 6	0630	1,850	6.81	Sept. 18	0115	2,220	7.55

**DISCHARGE, CUBIC FEET PER SECOND, WATER YEAR OCTOBER 2003 TO SEPTEMBER 2004
DAILY MEAN VALUES**

DAY	OCT	NOV	DEC	JAN	FEB	MAR	APR	MAY	JUN	JUL	AUG	SEP
1	113	103	145	128	62	84	270	99	58	52	96	47
2	94	97	127	190	60	111	347	100	59	48	74	42
3	83	91	115	168	442	131	304	103	94	46	60	38
4	95	86	107	441	250	188	283	85	66	56	73	36
5	85	191	110	1260	174	e313	228	84	114	54	76	34
6	73	203	104	514	1290	1190	186	75	73	43	54	31
7	66	167	92	318	700	525	162	116	63	66	48	30
8	62	141	84	242	326	391	167	109	57	61	43	228
9	58	125	81	213	245	292	176	79	54	42	39	327
10	55	114	87	162	220	236	136	71	57	38	47	188
11	52	115	376	133	194	199	125	66	180	35	65	114
12	49	738	236	e154	169	174	218	61	224	47	55	84
13	48	359	181	e135	146	147	1440	56	171	71	55	69
14	131	227	167	104	126	133	707	53	115	42	45	59
15	255	179	149	98	114	122	381	54	99	39	39	55
16	120	152	140	81	98	158	285	56	140	34	35	56
17	160	134	205	74	93	147	236	43	431	32	33	395
18	174	119	176	e105	87	136	211	240	433	45	31	1100
19	131	2390	152	e92	86	186	e194	449	198	46	49	278
20	114	964	137	e86	88	181	e166	209	143	36	53	170
21	104	408	121	e83	121	321	e141	401	113	32	208	128
22	99	281	133	e79	113	240	e118	794	221	31	95	101
23	90	218	245	89	103	195	110	290	151	41	64	85
24	79	197	550	88	117	167	95	189	99	38	54	75
25	72	166	336	78	107	151	106	138	83	29	48	68
26	73	140	241	77	98	132	250	112	80	268	43	61
27	238	124	191	91	92	134	175	94	67	1260	41	57
28	171	205	162	92	86	118	144	98	63	348	41	60
29	150	200	144	73	83	104	123	82	71	183	39	58
30	128	163	176	70	---	104	108	64	56	124	56	53
31	112	---	141	63	---	106	---	64	---	121	65	---
TOTAL	3334	8797	5411	5581	5890	6816	7592	4534	3833	3408	1824	4127
MEAN	108	293	175	180	203	220	253	146	128	110	58.8	138
MAX	255	2390	550	1260	1290	1190	1440	794	433	1260	208	1100
MIN	48	86	81	63	60	84	95	43	54	29	31	30
CFSM	1.46	3.98	2.37	2.44	2.76	2.98	3.43	1.98	1.73	1.49	0.80	1.87
IN.	1.68	4.44	2.73	2.82	2.97	3.44	3.83	2.29	1.93	1.72	0.92	2.08

STATISTICS OF MONTHLY MEAN DATA FOR WATER YEARS 1943 - 2004, BY WATER YEAR (WY)

MEAN	49.2	71.7	112	131	159	192	162	126	82.5	56.1	49.4	49.4
MAX	225	459	308	284	376	470	310	274	413	187	172	161
(WY)	1980	1986	1973	1994	1986	1994	1948	1996	1972	1990	1980	1987
MIN	11.2	19.0	14.2	23.1	33.0	45.5	49.2	27.3	15.4	9.59	12.4	8.92
(WY)	1964	1967	1961	1967	1954	1969	1971	1963	1962	1962	1962	1991

e Estimated.

MONONGAHELA RIVER BASIN

03074500 REDSTONE CREEK AT WALTERSBURG, PA--Continued

SUMMARY STATISTICS	FOR 2003 CALENDAR YEAR		FOR 2004 WATER YEAR		WATER YEARS 1943 - 2004	
ANNUAL TOTAL	52115		61147			
ANNUAL MEAN	143		167		103	
HIGHEST ANNUAL MEAN					167	
LOWEST ANNUAL MEAN					44.2	
HIGHEST DAILY MEAN	2390	Nov 19	2390	Nov 19	6620	Jun 23 1972
LOWEST DAILY MEAN	30	Aug 25,26	29	Jul 25	4.8	Sep 22 1991
ANNUAL SEVEN-DAY MINIMUM	35	Aug 20	36	Jul 19	5.3	Sep 28 1991
MAXIMUM PEAK FLOW			4600	Nov 19	a 8660	Jun 23 1972
MAXIMUM PEAK STAGE			11.13	Nov 19	b 14.83	Jun 23 1972
INSTANTANEOUS LOW FLOW			27	Jul 22,25 c	4.2	Aug 2 1962
ANNUAL RUNOFF (CFSM)	1.94		2.27		1.40	
ANNUAL RUNOFF (INCHES)	26.30		30.86		19.00	
10 PERCENT EXCEEDS	250		296		210	
50 PERCENT EXCEEDS	100		112		62	
90 PERCENT EXCEEDS	47		47		21	

a From rating curve extended above 8,200 ft³/s.

b From peak-stage indicator.

c Also Sept. 7.