



# 2004 Water Year YOUGHIOGHENY RIVER BASIN

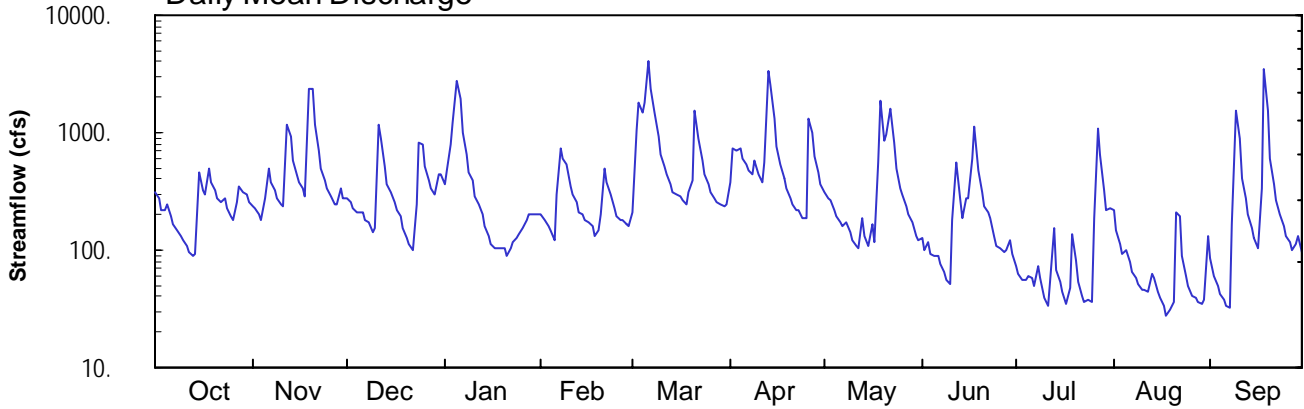
## 03080000 Laurel Hill Creek at Ursina, PA

Latitude: 39° 49 ' 13"  
Somerset County

Longitude: 079° 19 ' 18"  
Datum: 1335.26 feet

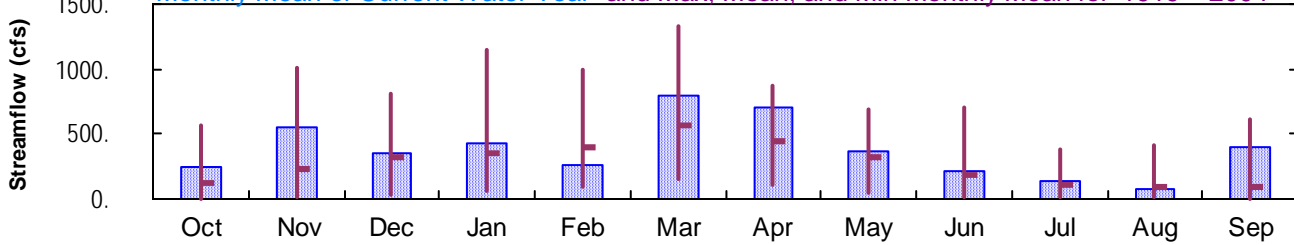
Hydrologic Unit Code: 05020006  
Drainage Area: 121. mi<sup>2</sup>

### Daily Mean Discharge

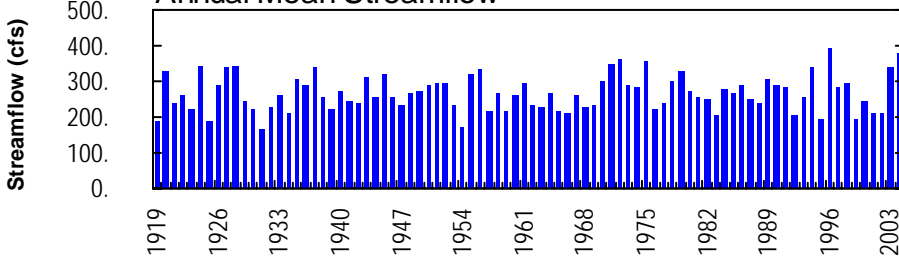


### Monthly Statistics

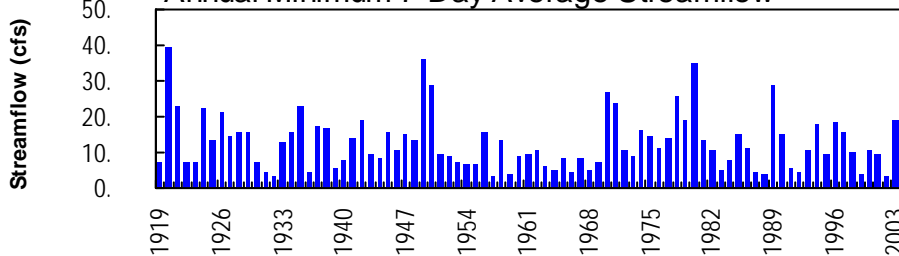
Monthly Mean of Current Water Year and Max, Mean, and Min Monthly Mean for 1919 – 2004



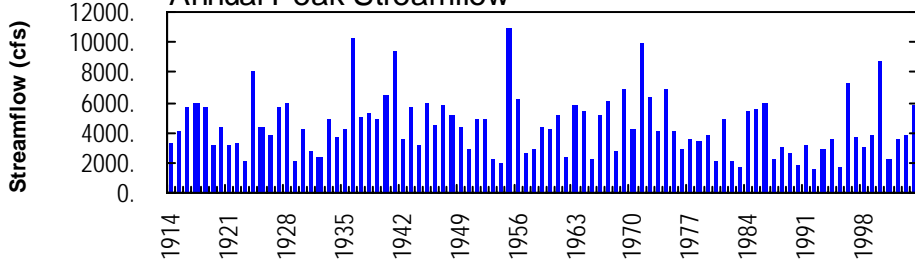
### Annual Mean Streamflow



### Annual Minimum 7-Day Average Streamflow



### Annual Peak Streamflow



**YOUGHIOGHENY RIVER BASIN**

**03080000 LAUREL HILL CREEK AT URSINA, PA**

**LOCATION.**--Lat 39°49'13", long 79°19'18", Somerset County, Hydrologic Unit 05020006, on right bank 500 ft downstream from bridge on State Highway 281 at Ursina, and 2.7 mi upstream from mouth.

**DRAINAGE AREA.**--121 mi<sup>2</sup>.

**PERIOD OF RECORD.**--August to September 1913 (gage heights and discharge measurements only), October 1918 to current year. Monthly discharge only for some periods, published in WSP 1305. October 1913 to September 1918 (gage heights and discharge measurements only) in reports of Water Supply Commission of Pennsylvania.

**REVISED RECORDS.**--WSP 743: Drainage area. WSP 893: 1919-21, 1932-34. WSP 1305: 1922-31. WSP 1435: 1919-20. WSP 1625: 1932 (M).

**GAGE.**--Water-stage recorder and masonry control. Datum of gage is 1,335.26 ft above National Geodetic Vertical Datum of 1929. Prior to July 18, 1939, nonrecording gage at bridge 0.5 mi downstream at datum 6.20 ft lower.

**REMARKS.**--Records good except those for estimated daily discharges, which are poor. Several measurements of water temperature were made during the year. U.S. Army Corps of Engineers satellite telemetry at station.

**PEAK DISCHARGES FOR CURRENT YEAR.**--Peak discharges greater than a base discharge of 3,000 ft<sup>3</sup>/s and maximum (\*):

Date	Time	Discharge ft <sup>3</sup> /s	Gage Height (ft)	Date	Time	Discharge ft <sup>3</sup> /s	Gage Height (ft)
Nov. 19	1500	5,750	6.33	Apr. 13	1800	*5,820	*6.64
Jan. 5	1200	3,810	4.86	May 19	0200	3,150	4.28
Mar. 6	0700	4,360	5.34	Sept. 18	0245	4,130	5.14

**DISCHARGE, CUBIC FEET PER SECOND, WATER YEAR OCTOBER 2003 TO SEPTEMBER 2004  
DAILY MEAN VALUES**

DAY	OCT	NOV	DEC	JAN	FEB	MAR	APR	MAY	JUN	JUL	AUG	SEP
1	307	238	274	359	e201	e212	376	305	128	73	220	85
2	275	224	252	484	e180	e1050	723	280	101	63	146	60
3	222	203	224	799	e161	e1820	700	265	118	56	110	49
4	220	182	210	1220	e147	e1490	724	214	93	55	92	42
5	242	272	207	e2800	e122	e1820	605	196	89	60	101	38
6	194	498	207	e1950	e299	4010	528	176	87	59	80	34
7	165	382	177	988	e742	2320	479	158	76	49	65	32
8	146	323	175	661	e612	1450	437	175	64	74	58	169
9	130	279	143	464	e539	922	590	141	56	59	51	1520
10	120	246	153	389	e355	645	443	122	52	39	45	894
11	108	238	1180	292	e299	519	383	110	180	34	45	400
12	96	1190	895	e241	e255	445	560	102	551	53	44	274
13	90	920	517	e199	e206	361	e3400	186	275	156	63	201
14	92	586	e364	e162	e200	313	e2540	131	190	68	57	153
15	452	448	e308	e131	e178	298	1310	110	271	54	44	126
16	327	381	e258	e111	e172	282	762	164	276	44	39	106
17	295	333	e221	e106	e158	260	529	116	598	35	33	329
18	498	283	e197	e106	e129	243	403	554	1120	48	28	3530
19	384	2330	e156	e106	e145	312	329	1870	475	136	31	1520
20	318	e2400	e128	e106	e199	395	280	841	316	82	36	592
21	273	1180	e114	e90	e497	e1550	243	951	235	53	207	362
22	259	696	e101	e102	e371	e880	218	1590	212	40	193	264
23	272	494	e249	e118	e298	571	216	822	186	36	88	203
24	227	398	829	e128	e225	440	187	489	130	38	61	163
25	195	340	798	e136	e196	e360	190	340	106	37	49	133
26	179	285	520	e153	e180	e310	e1330	298	105	184	41	116
27	251	246	396	e182	e178	e280	e1000	234	95	1060	39	99
28	343	249	334	e198	e166	e260	627	203	98	654	36	113
29	310	334	297	e198	e160	e245	455	175	122	325	35	133
30	300	279	437	e204	---	240	357	132	94	216	37	98
31	260	---	442	e204	---	242	---	122	---	230	133	---
TOTAL	7550	16457	10763	13387	7570	24545	20924	11572	6499	4170	2307	11838
MEAN	244	549	347	432	261	792	697	373	217	135	74.4	395
MAX	498	2400	1180	2800	742	4010	3400	1870	1120	1060	220	3530
MIN	90	182	101	90	122	212	187	102	52	34	28	32
CFSM	2.01	4.53	2.87	3.57	2.16	6.54	5.76	3.09	1.79	1.11	0.62	3.26
IN.	2.32	5.06	3.31	4.12	2.33	7.55	6.43	3.56	2.00	1.28	0.71	3.64

**STATISTICS OF MONTHLY MEAN DATA FOR WATER YEARS 1919 - 2004, BY WATER YEAR (WY)**

MEAN	116	223	326	350	401	559	445	319	188	104	97.3	86.1
MAX	564	1011	815	1141	1000	1331	879	689	700	388	416	608
(WY)	1955	1986	1973	1937	1956	1936	1970	1924	1941	1985	1935	1971
MIN	6.15	8.91	25.8	57.0	89.3	155	114	52.0	21.2	9.20	8.90	5.73
(WY)	1931	1931	1999	1925	1934	1990	1921	1926	1999	1966	1983	1959

e Estimated.

**YOUGHIOGHENY RIVER BASIN**

**03080000 LAUREL HILL CREEK AT URSINA, PA--Continued**

<b>SUMMARY STATISTICS</b>	<b>FOR 2003 CALENDAR YEAR</b>		<b>FOR 2004 WATER YEAR</b>		<b>WATER YEARS 1919 - 2004</b>	
ANNUAL TOTAL	138097		137582			
ANNUAL MEAN	378		376		267	
HIGHEST ANNUAL MEAN					395	
LOWEST ANNUAL MEAN					164	
HIGHEST DAILY MEAN	2520	Jun 4	4010	Mar 6	6980	Mar 17 1936
LOWEST DAILY MEAN	26	Aug 26	28	Aug 18	2.3	Sep 3 1999
ANNUAL SEVEN-DAY MINIMUM	30	Aug 20	38	Aug 14	3.4	Sep 5 1957
MAXIMUM PEAK FLOW			5830	Apr 13	<b>a</b> 10900	Oct 15 1954
MAXIMUM PEAK STAGE			<b>b</b> 6.64	Apr 13	10.63	Oct 15 1954
INSTANTANEOUS LOW FLOW			26	Aug 18	2.2	Sep 26 1932 <b>c</b>
ANNUAL RUNOFF (CFSM)	3.13		3.11		2.21	
ANNUAL RUNOFF (INCHES)	42.46		42.30		30.02	
10 PERCENT EXCEEDS	905		833		639	
50 PERCENT EXCEEDS	251		219		148	
90 PERCENT EXCEEDS	67		56		20	

**a** From rating curve extended above 6,100 ft<sup>3</sup>/s on basis of slope-area measurement of peak flow.

**b** Maximum gage height, 7.18 ft., Feb. 7 (backwater from ice).

**c** Also Sept. 4, 1999.