



2004 Water Year YOUGHIOGHENY RIVER BASIN

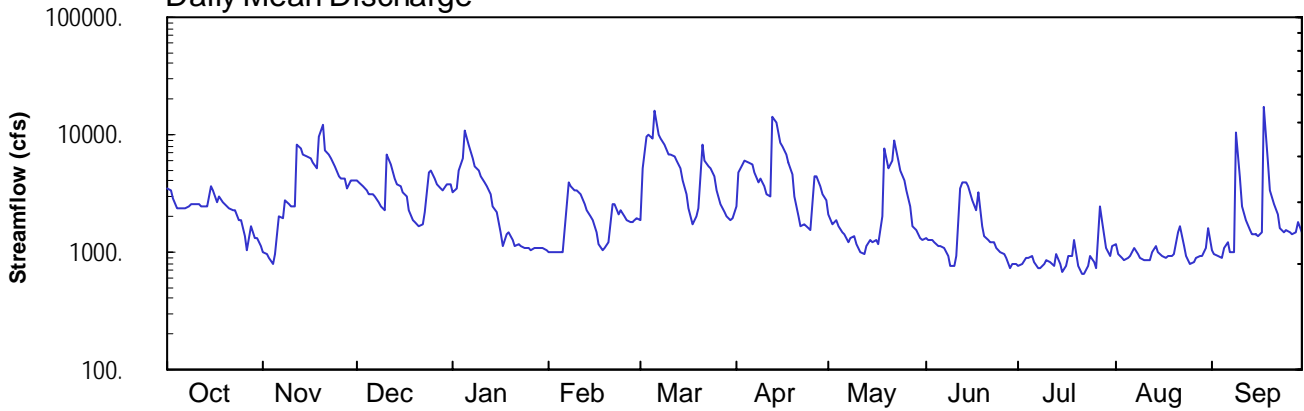
03081000 Youghiogheny River below Confluence, PA

Latitude: 39° 49 ' 39"
Fayette County

Longitude: 079° 22 ' 22"
Datum: 1302.77 feet

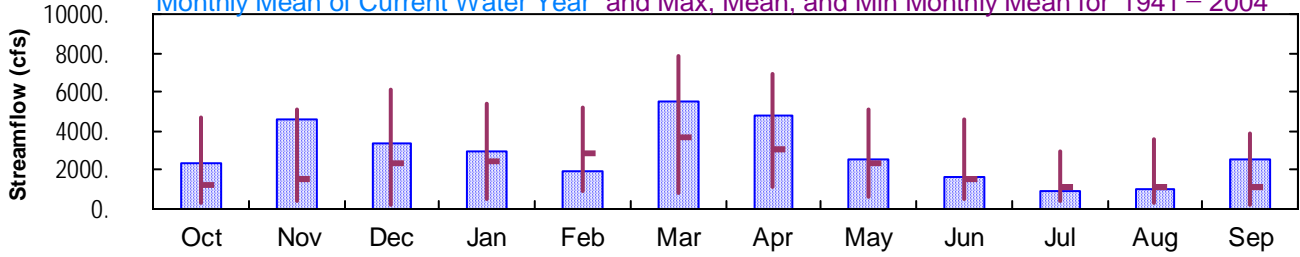
Hydrologic Unit Code: 05020006
Drainage Area: 1029. mi²

Daily Mean Discharge

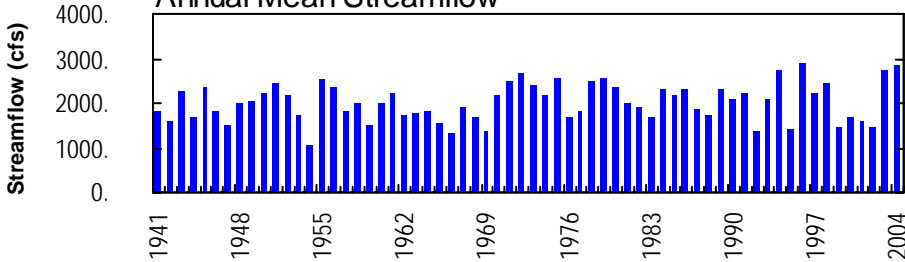


Monthly Statistics

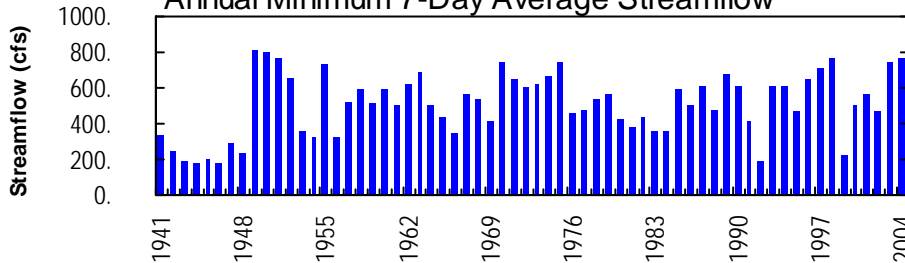
Monthly Mean of Current Water Year and Max, Mean, and Min Monthly Mean for 1941 – 2004



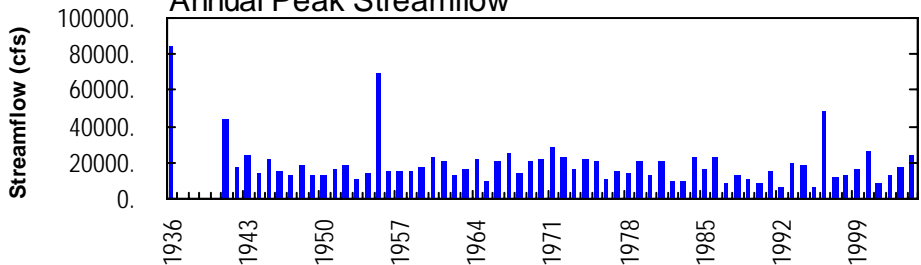
Annual Mean Streamflow



Annual Minimum 7-Day Average Streamflow



Annual Peak Streamflow



YOUGHIOGHENY RIVER BASIN

03081000 YOUGHIOGHENY RIVER BELOW CONFLUENCE, PA

LOCATION.--Lat 39°49'39", long 79°22'22", Fayette County, Hydrologic Unit 05020006, on left bank 1.0 mi downstream from Casselman River, 1.5 mi northwest of Confluence, at mile 72.0.

DRAINAGE AREA.--1,029 mi².

PERIOD OF RECORD.--June 1940 to current year. Monthly discharge only for June 1940, published in WSP 1305.

GAGE.--Water-stage recorder. Datum of gage is 1,302.77 ft above National Geodetic Vertical Datum of 1929.

REMARKS.--Records good except those for estimated daily discharges, which are poor. Flow regulated since January 1925 by Deep Creek Reservoir (station 03076000) 28 mi upstream and since December 1942 by Youghiogheny River Lake (03077000) 1.7 mi upstream. Several measurements of water temperature were made during the year. U.S. Army Corps of Engineers satellite telemetry at station.

EXTREMES OUTSIDE PERIOD OF RECORD.--Flood of Mar. 17, or 18, 1936 reached a stage of 21.6 ft, from floodmarks, discharge, 85,000 ft³/s.

DISCHARGE, CUBIC FEET PER SECOND, WATER YEAR OCTOBER 2003 TO SEPTEMBER 2004
DAILY MEAN VALUES

DAY	OCT	NOV	DEC	JAN	FEB	MAR	APR	MAY	JUN	JUL	AUG	SEP
1	3540	1000	4010	3190	1010	1870	2490	2100	1300	750	1190	1050
2	3380	947	3860	3530	999	5240	4790	1690	1240	782	973	963
3	2860	873	3620	4930	1010	9760	5570	1890	1250	892	894	918
4	2350	806	3320	6360	1020	9920	6070	1630	1220	888	867	905
5	2390	979	3070	11000	1010	9370	5820	1510	1130	931	875	1070
6	2350	2000	3070	8300	1510	16200	5590	1450	1100	813	939	1210
7	2320	1960	2940	6170	3870	9980	4830	1200	1070	735	1090	1020
8	2500	2710	2630	5430	3570	9220	3950	1340	907	734	953	996
9	2600	2600	2430	4920	3410	8190	4230	1360	775	780	895	10300
10	2550	2490	2240	4330	3330	6840	3600	1150	750	868	852	4350
11	2510	2420	6680	3980	3070	6730	3080	1020	938	811	840	2470
12	2460	8190	5490	3640	2570	6410	3010	945	3520	754	839	1860
13	2420	e7700	4210	3050	2290	5970	14000	1100	3860	957	988	1530
14	2410	e6700	3800	2420	2010	5180	12500	1240	3970	785	1110	1390
15	3580	e6600	3580	2160	1830	4060	8720	1240	3680	690	995	1400
16	3330	e6150	3260	1500	1450	3110	8060	1270	2750	772	909	1370
17	2650	e5900	2940	1140	1160	2350	6740	1190	2300	928	891	1460
18	3010	e5250	2260	1430	1050	1740	5870	2010	3190	941	919	17000
19	2670	9610	1870	1470	1070	2000	4620	7580	1630	1280	942	5800
20	2460	12300	1830	1280	1210	2340	2980	5070	1370	765	946	3420
21	2340	7320	1660	1140	2580	8200	2040	6120	1250	648	1500	2540
22	2300	6870	1710	1180	2570	5930	1690	8760	1210	662	1680	2110
23	2270	6370	2210	1120	2140	5380	1690	6070	1210	770	1110	1620
24	1890	5360	4840	1080	2270	5160	1580	4990	1080	920	939	1490
25	1850	4340	4950	1070	2050	4450	1510	4060	997	835	801	1520
26	1370	4280	4170	1050	1890	3360	4440	3390	975	740	824	1490
27	1040	4200	3800	1080	1830	2540	4410	2410	882	2420	905	1410
28	1690	3520	3470	1080	1780	2200	3660	1650	723	1800	920	1460
29	1330	4040	3300	1060	1920	2010	3160	1530	787	1090	909	1800
30	1290	4070	3710	1060	---	1900	2790	1340	794	908	1080	1450
31	1110	---	3760	1030	---	1940	---	1250	---	1130	1600	---
TOTAL	72820	137555	104690	92180	57479	169550	143490	79555	47858	28779	31175	77372
MEAN	2349	4585	3377	2974	1982	5469	4783	2566	1595	928	1006	2579
MAX	3580	12300	6680	11000	3870	16200	14000	8760	3970	2420	1680	17000
MIN	1040	806	1660	1030	999	1740	1510	945	723	648	801	905
(†)	-700	-75	-491	-3	+577	+921	+204	+2	-65	-363	-416	+38

† Change in contents, equivalent in cubic feet per second, in Deep Creek Reservoir and Youghiogheny River Lake. Records of contents in Deep Creek Reservoir furnished by Reliant Energy. Records of contents in Youghiogheny River Lake furnished by U.S. Army Corps of Engineers.
e Estimated.

YOUGHIOGHENY RIVER BASIN

03081000 YOUGHIOGHENY RIVER BELOW CONFLUENCE, PA--Continued

STATISTICS OF MONTHLY MEAN DATA FOR WATER YEARS 1941 - 2004, BY WATER YEAR (WY) (SINCE REGULATION)												
	OCT	NOV	DEC	JAN	FEB	MAR	APR	MAY	JUN	JUL	AUG	SEP
MEAN	1186	1562	2312	2458	2819	3652	3092	2382	1558	1114	1077	1141
MAX	4699	5065	6171	5441	5204	7868	6984	5052	4634	2950	3565	3882
(WY)	1980	1986	1973	1974	1956	1963	1993	1996	2003	1985	1956	1971
MIN	287	433	246	496	903	778	1157	602	491	384	290	214
(WY)	1948	1954	1999	1981	1954	1990	1963	1982	1965	1942	1944	1946

SUMMARY STATISTICS	FOR 2003 CALENDAR YEAR		FOR 2004 WATER YEAR		WATER YEARS 1941 - 2004	
ANNUAL TOTAL	1178301		1042503			
ANNUAL MEAN	3228	† -24	2848	† -36	2026	
HIGHEST ANNUAL MEAN					2910	1996
LOWEST ANNUAL MEAN					1074	1954
HIGHEST DAILY MEAN	12800	Jun 4	17000	Sep 18	34600	Oct 16 1954
LOWEST DAILY MEAN	669	Feb 17	648	Jul 21	121	Sep 27 1943
ANNUAL SEVEN-DAY MINIMUM	750	Apr 28	763	Jul 20	175	Sep 16 1946
MAXIMUM PEAK FLOW			24700	Sep 18	^a 69500	Oct 15 1954
MAXIMUM PEAK STAGE			11.99	Sep 18	19.92	Oct 15 1954
10 PERCENT EXCEEDS	7010		6080		4500	
50 PERCENT EXCEEDS	2350		1950		1270	
90 PERCENT EXCEEDS	1000		893		614	

† Change in contents, equivalent in cubic feet per second, in Deep Creek Reservoir and Youghiogheny River Lake. Records of contents in Deep Creek Reservoir furnished by Reliant Energy. Records of contents in Youghiogheny River Lake furnished by U.S. Army Corps of Engineers.
^a From rating curve extended above 25,000 ft³/s on basis of slope-area measurement of peak flow.