



2004 Water Year YOUGHIOGHENY RIVER BASIN

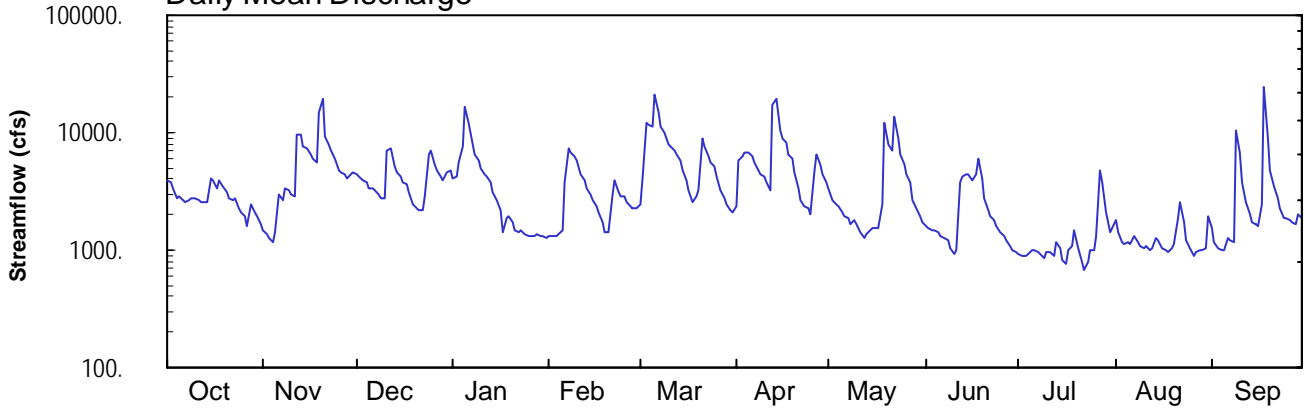
03082500 Youghiogheny River at Connellsville, PA

Latitude: 40° 01' 03"
Fayette County

Longitude: 079° 35' 38"
Datum: 860.13 feet

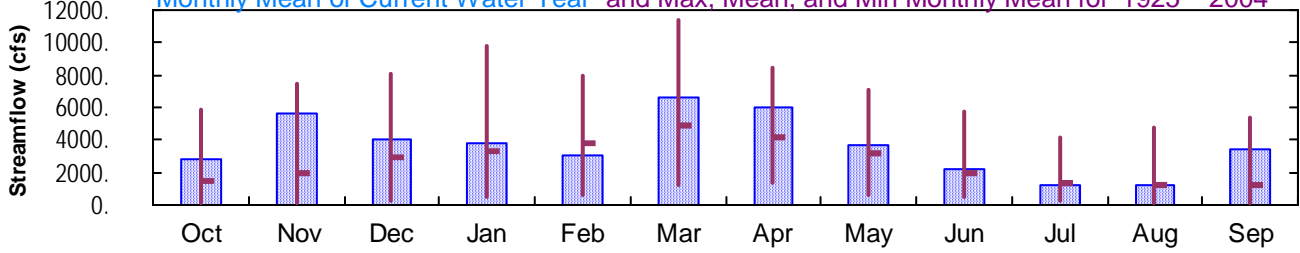
Hydrologic Unit Code: 05020006
Drainage Area: 1326. mi²

Daily Mean Discharge

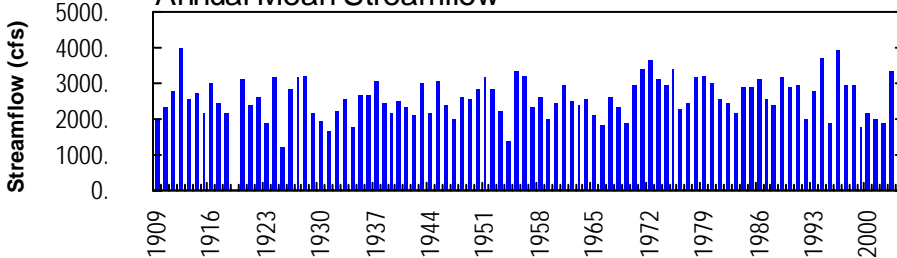


Monthly Statistics

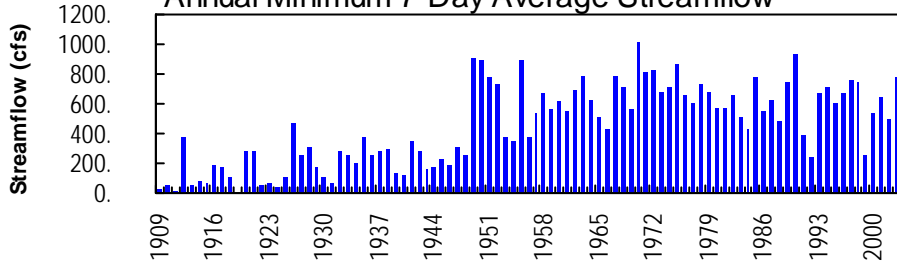
Monthly Mean of Current Water Year and Max, Mean, and Min Monthly Mean for 1925 – 2004



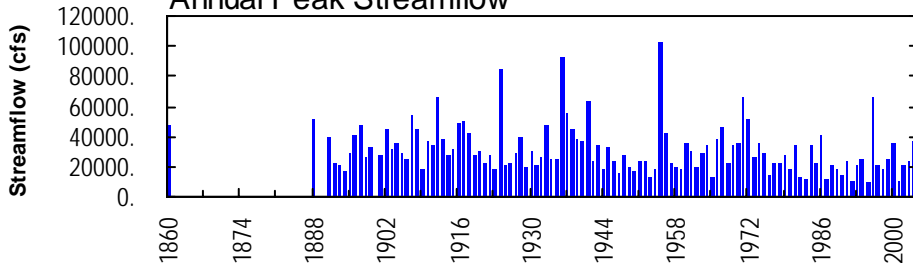
Annual Mean Streamflow



Annual Minimum 7-Day Average Streamflow



Annual Peak Streamflow



YOUGHIOGHENY RIVER BASIN

03082500 YOUGHIOGHENY RIVER AT CONNELLSVILLE, PA

LOCATION.--Lat 40°01'03", long 79°35'38", Fayette County, Hydrologic Unit 05020006, on left bank at downstream side of Crawford Avenue bridge at Conneltsville, 1.2 mi upstream from Mounts Creek, at mile 44.0.

DRAINAGE AREA.--1,326 mi².

PERIOD OF RECORD.--July 1908 to current year. Monthly discharge only for some periods, published in WSP 1305.

REVISED RECORDS.--WSP 743: Drainage area. WSP 1305: 1912 (M), 1914 (M), 1916-17 (M), 1918, 1922-25. WSP 1435: 1919-20. WSP 1725: 1916, 1932 (monthly, yearly summaries).

GAGE.--Water-stage recorder. Datum of gage is 860.13 ft above National Geodetic Vertical Datum of 1929. Prior to Aug. 15, 1928, nonrecording gage, and Aug. 15, 1928 to July 7, 1958, water-stage recorder at same site and datum. July 8, 1958 to Sept. 8, 1959, nonrecording gage at site 0.4 mi downstream at different datum.

REMARKS.--Records good except those for estimated daily discharges, which are poor. Flow regulated since January 1925 by Deep Creek Reservoir (station 03076000), since December 1942 by Youghiogheny River Lake (station 03077000) 29.4 mi upstream, and by several smaller reservoirs above station. Several measurements of water temperature were made during the year. U.S. Army Corps of Engineers satellite telemetry at station.

DISCHARGE, CUBIC FEET PER SECOND, WATER YEAR OCTOBER 2003 TO SEPTEMBER 2004
DAILY MEAN VALUES

DAY	OCT	NOV	DEC	JAN	FEB	MAR	APR	MAY	JUN	JUL	AUG	SEP
1	3990	1470	4410	4110	e1300	2450	2380	3330	1570	934	1830	1510
2	3820	1370	4210	4220	e1340	4310	5720	2680	1510	887	1400	1160
3	3390	1270	3960	5670	e1340	12300	6150	2460	1480	890	1190	1020
4	2720	1160	3780	7680	e1370	11600	6830	2370	1460	940	1140	992
5	2820	1410	3380	16700	e1460	11400	6680	2120	1400	985	1190	987
6	2630	3030	3360	12400	e3830	21300	6270	1970	1330	1010	1120	1270
7	2600	2660	3210	7950	7340	14700	5590	1840	1270	953	1330	1230
8	2610	3340	3000	6620	6700	11400	4720	1690	1200	919	1160	1150
9	2800	3210	2720	5850	6190	10200	4420	1770	1040	859	1080	10500
10	2720	3000	2720	5010	5880	7780	4220	1670	916	956	1040	6780
11	2660	2890	7110	4480	4390	7530	3720	1430	993	957	1080	3810
12	2600	9460	7190	4320	3890	7050	3260	1290	3810	891	1000	2590
13	2550	9800	5220	3700	3330	6520	17500	1350	4270	1170	1040	2050
14	2580	7590	4580	3070	2960	5810	19200	1500	4420	1040	1280	1730
15	4140	7230	4250	2660	2610	4820	10400	1520	4400	834	1200	1640
16	3990	6560	3830	2180	2330	3880	8890	1550	3950	768	1060	1620
17	3370	6140	3630	1410	2060	3260	8110	1520	4410	1000	1000	2430
18	3860	5620	3050	e1860	1720	2550	6590	2420	6040	1080	965	24800
19	3450	14900	2450	e1970	1440	2850	5940	12000	4030	1500	1030	9000
20	3050	19100	2380	e1720	1420	3230	4540	7800	2770	1060	1110	4830
21	2810	9380	2170	e1480	2970	9020	3380	6960	2220	787	1900	3450
22	2700	7790	2150	e1440	3960	7740	2640	13800	1910	688	2520	2790
23	2710	6980	2870	e1460	3110	6180	2360	9010	1790	782	1700	2260
24	2240	6030	6530	e1390	2910	5620	2230	6410	1620	996	1220	1900
25	2130	4860	7060	e1330	2820	5080	2050	5370	1420	1010	1050	1860
26	1930	4520	5400	e1340	2570	4200	4820	4430	1300	1310	890	1830
27	1590	4410	4720	e1330	2380	3270	6540	3740	1220	4690	958	1700
28	2450	4150	4230	e1350	2280	2720	5290	2680	1100	3830	1000	1690
29	2100	4420	3930	e1340	2280	2410	4430	2240	995	2100	1000	2050
30	1960	4560	4500	e1300	---	2200	3800	1930	967	1400	1020	1890
31	1670	---	4760	e1280	---	2100	---	1690	---	1570	1950	---
TOTAL	86640	168310	126760	118620	88180	205480	178670	112540	66811	38796	38453	102519
MEAN	2795	5610	4089	3826	3041	6628	5956	3630	2227	1251	1240	3417
MAX	4140	19100	7190	16700	7340	21300	19200	13800	6040	4690	2520	24800
MIN	1590	1160	2150	1280	1300	2100	2050	1290	916	688	890	987
(†)	-700	-75	-491	-3	+577	+921	+204	+2	-65	-363	-416	+38

† Change in contents, equivalent in cubic feet per second, in Deep Creek Reservoir and Youghiogheny River Lake. Records of contents in Deep Creek Reservoir furnished by Reliant Energy. Records of contents in Youghiogheny River Lake furnished by U.S. Army Corps of Engineers.
e Estimated.

YOUGHIOGHENY RIVER BASIN

03082500 YOUGHIOGHENY RIVER AT CONNELLSVILLE, PA--Continued

STATISTICS OF MONTHLY MEAN DATA FOR WATER YEARS 1925 - 2004, BY WATER YEAR (WY) (SINCE REGULATION)

	OCT	NOV	DEC	JAN	FEB	MAR	APR	MAY	JUN	JUL	AUG	SEP
MEAN	1425	1954	2940	3268	3790	4905	4166	3131	1936	1332	1274	1250
MAX	5938	7518	8050	9737	7916	11370	8463	7142	5805	4143	4772	5400
(WY)	1955	1986	1973	1937	1939	1936	1993	1996	1941	1985	1956	1971
MIN	139	84.5	295	465	630	1189	1321	662	504	279	155	146
(WY)	1931	1931	1999	1925	1934	1990	1925	1926	1925	1930	1930	1925

SUMMARY STATISTICS FOR 2003 CALENDAR YEAR FOR 2004 WATER YEAR WATER YEARS 1925 - 2004

ANNUAL TOTAL	1418834		1331779									
ANNUAL MEAN	3887	† -24	3639	† -36					2609			
HIGHEST ANNUAL MEAN									3944			1996
LOWEST ANNUAL MEAN									1223			1925
HIGHEST DAILY MEAN	19100			Nov 20		24800		Sep 18	58100		Mar 18	1936
LOWEST DAILY MEAN	803			Feb 17		688		Jul 22	39		Nov 16	1930
ANNUAL SEVEN-DAY MINIMUM	1000			Jun 29		935		Jul 6	62		Nov 14	1930
MAXIMUM PEAK FLOW						36600		Sep 18	a103000		Oct 16	1954
MAXIMUM PEAK STAGE						13.96		Sep 18	21.96		Oct 16	1954
10 PERCENT EXCEEDS			7930			7200			5820			
50 PERCENT EXCEEDS			2810			2610			1620			
90 PERCENT EXCEEDS			1260			1040			604			

STATISTICS OF MONTHLY MEAN DATA FOR WATER YEARS 1909 - 1924, BY WATER YEAR (WY) (PRIOR TO REGULATION)

	OCT	NOV	DEC	JAN	FEB	MAR	APR	MAY	JUN	JUL	AUG	SEP
MEAN	1126	1653	2574	4697	4098	5490	3830	2696	2379	1110	764	1100
MAX	5117	4937	5795	8679	9354	9777	6572	6675	5224	5102	1904	5158
(WY)	1912	1914	1922	1913	1918	1912	1914	1924	1910	1912	1912	1911
MIN	36.4	68.4	342	503	1589	1913	1335	1125	938	221	99.5	132
(WY)	1909	1909	1909	1918	1924	1915	1921	1911	1922	1918	1910	1922

SUMMARY STATISTICS WATER YEARS 1909 - 1924

ANNUAL MEAN	2620											
HIGHEST ANNUAL MEAN	3976					1912						
LOWEST ANNUAL MEAN	1879					1923						
HIGHEST DAILY MEAN	59200			Mar 21		1912						
LOWEST DAILY MEAN	11			Oct 18		1910						
ANNUAL SEVEN-DAY MINIMUM	14			Oct 15		1910						
MAXIMUM PEAK FLOW	b65900			Mar 29		1924						
MAXIMUM PEAK STAGE	c20.5			Mar 29		1924						
INSTANTANEOUS LOW FLOW	11			Sep 23		1908d						
ANNUAL RUNOFF (CFSM)	1.98											
ANNUAL RUNOFF (INCHES)	26.84											
10 PERCENT EXCEEDS			6200									
50 PERCENT EXCEEDS			1370									
90 PERCENT EXCEEDS			195									

† Change in contents, equivalent in cubic feet per second, in Deep Creek Reservoir and Youghiogheny River Lake. Records of contents in Deep Creek Reservoir furnished by Reliant Energy. Records of contents in Youghiogheny River Lake furnished by U.S. Army Corps of Engineers.

a From rating curve extended above 55,000 ft³/s.

b Estimated from hydrograph.

c From graph based on gage readings.

d Also Sept. 26, 27, 1908 and Oct. 18, 1910.