



2004 Water Year MONTOUR RUN BASIN

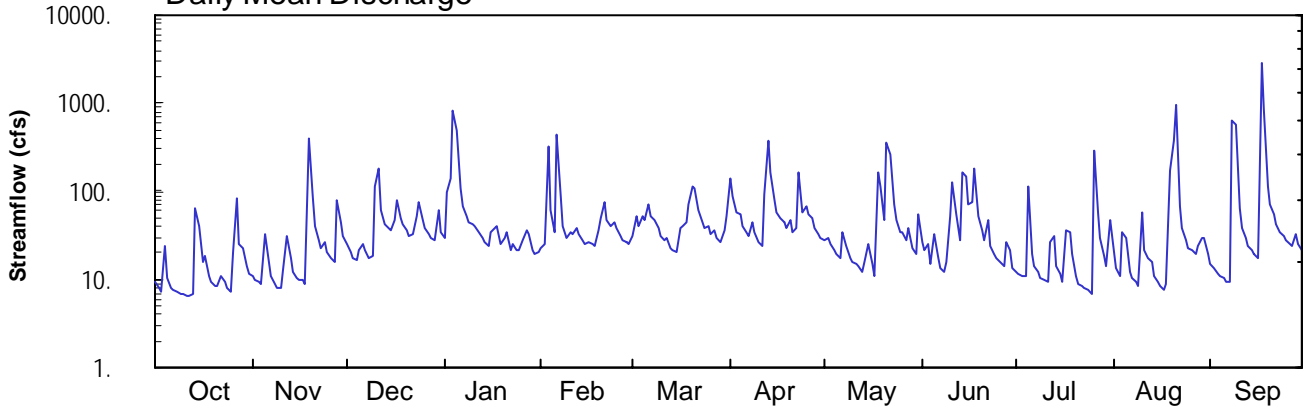
03085956 Montour Run at Scott Station near Imperial, PA

Latitude: 40° 27 ' 23"
Allegheny County

Longitude: 080° 10 ' 34"
Datum: 850 feet

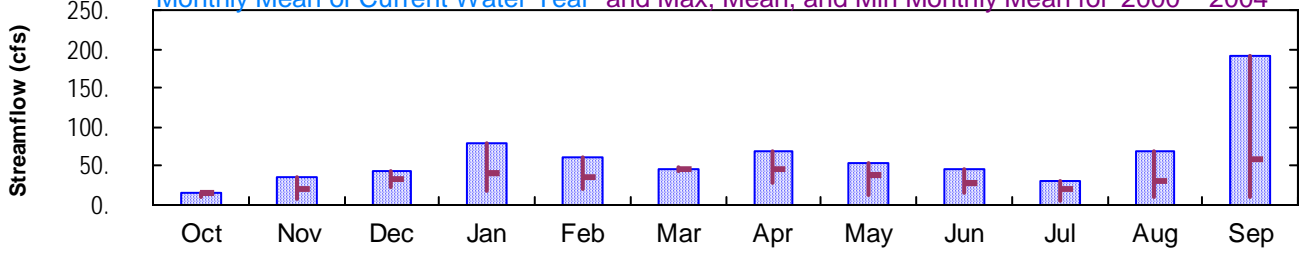
Hydrologic Unit Code: 05030101
Drainage Area: 25.4 mi²

Daily Mean Discharge

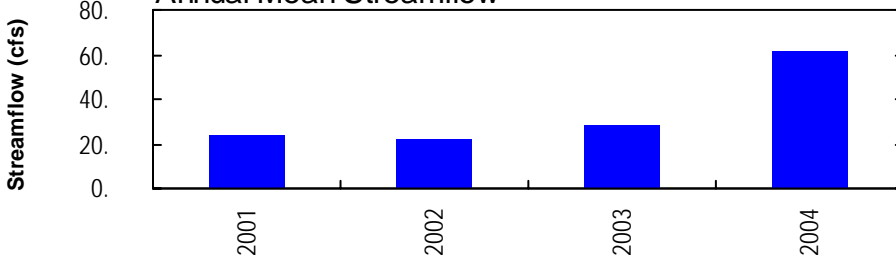


Monthly Statistics

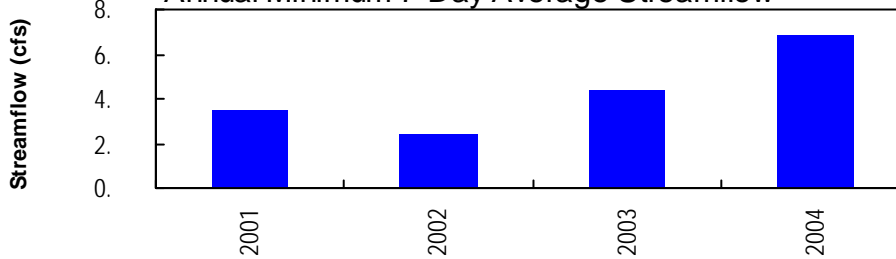
Monthly Mean of Current Water Year and Max, Mean, and Min Monthly Mean for 2000 – 2004



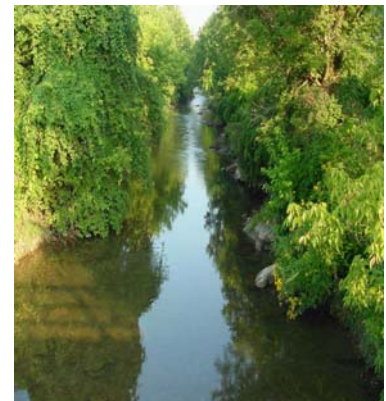
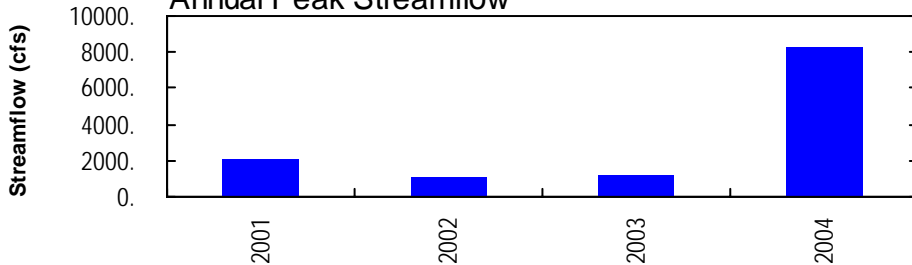
Annual Mean Streamflow



Annual Minimum 7-Day Average Streamflow



Annual Peak Streamflow



MONTOUR RUN BASIN

03085956 MONTOUR RUN AT SCOTT STATION NEAR IMPERIAL, PA

LOCATION.--Lat 40°27'23", long 80°10'34", Allegheny County, Hydrologic Unit 05030101, on left bank at upstream side of privately owned single span bridge on south side of Montour Run Road, SR3072, 0.3 mi downstream from McCalrens Run, and 0.9 mi upstream from Trout Run.

DRAINAGE AREA.--25.4 mi².

PERIOD OF RECORD.--August 2000 to current year.

GAGE.--Water-stage recorder. Datum of gage is 850.00 ft above National Geodetic Vertical Datum of 1929.

REMARKS.--Records good except those for estimated daily discharges, which are poor. Several measurements of water temperature were made during the year. Satellite telemetry at station.

PEAK DISCHARGES FOR CURRENT YEAR.--Peak discharges greater than a base discharge of 1,000 ft³/s and maximum (*):

Date	Time	Discharge ft ³ /s	Gage Height (ft)	Date	Time	Discharge ft ³ /s	Gage Height (ft)
Jan. 4	1115	1,660	7.48	Sept. 8	2030	2,390	8.58
May 21	0630	1,170	6.53	Sept. 17	1715	*8,280	*15.58
Aug. 21	0630	2,920	9.23				

**DISCHARGE, CUBIC FEET PER SECOND, WATER YEAR OCTOBER 2003 TO SEPTEMBER 2004
DAILY MEAN VALUES**

DAY	OCT	NOV	DEC	JAN	FEB	MAR	APR	MAY	JUN	JUL	AUG	SEP
1	9.4	11	25	29	22	30	141	28	27	12	21	15
2	8.1	10	20	97	25	53	86	29	21	11	13	13
3	7.4	9.4	18	140	328	40	57	25	26	11	11	12
4	24	8.9	16	825	62	53	55	21	15	11	35	11
5	10	33	21	479	35	46	41	19	32	115	30	10
6	8.2	16	25	107	445	72	35	18	18	20	12	9.5
7	7.5	11	21	68	89	53	31	35	14	14	10	9.3
8	7.1	9.1	18	53	41	47	44	24	12	12	9.3	621
9	6.8	8.2	18	45	30	38	34	18	16	10	8.5	581
10	6.7	7.9	112	42	34	31	27	16	51	9.7	58	64
11	6.6	13	181	41	32	28	24	15	128	9.5	22	39
12	6.5	32	62	35	38	29	94	14	54	26	18	29
13	6.7	18	43	29	32	23	373	12	27	31	15	25
14	65	12	40	26	29	22	161	16	161	14	11	22
15	41	10	36	24	25	21	80	25	149	11	9.2	19
16	16	9.8	46	34	27	39	59	15	70	9.2	8.3	17
17	19	9.7	79	37	25	41	50	11	74	36	7.7	2870
18	11	9.1	51	39	23	45	44	168	185	35	9.1	877
19	9.5	396	41	25	36	70	38	112	52	20	169	116
20	8.6	87	36	30	49	115	47	48	36	11	384	71
21	8.3	40	30	35	74	107	34	351	28	9.0	938	54
22	11	28	33	22	46	60	37	260	47	8.3	68	42
23	9.4	23	52	25	40	45	163	73	24	8.2	38	35
24	7.9	26	74	22	44	38	58	48	20	7.6	28	31
25	7.4	21	48	21	37	41	67	35	18	7.0	23	28
26	20	17	39	28	31	33	56	34	16	294	22	26
27	85	16	33	37	28	36	50	28	14	59	20	24
28	25	78	30	33	26	29	39	38	27	29	24	32
29	23	44	28	21	26	27	32	23	21	18	29	25
30	14	30	61	20	---	37	29	19	14	14	29	21
31	12	---	34	21	---	53	---	56	---	48	19	---
TOTAL	508.1	1044.1	1371	2490	1779	1402	2086	1634	1397	930.5	2099.1	5748.8
MEAN	16.4	34.8	44.2	80.3	61.3	45.2	69.5	52.7	46.6	30.0	67.7	192
MAX	85	396	181	825	445	115	373	351	185	294	938	2870
MIN	6.5	7.9	16	20	22	21	24	11	12	7.0	7.7	9.3

STATISTICS OF MONTHLY MEAN DATA FOR WATER YEARS 2000 - 2004, BY WATER YEAR (WY)

MEAN	14.3	19.7	32.9	40.0	35.3	46.6	45.8	37.5	29.2	19.2	29.9	57.9
MAX	16.4	34.8	44.2	80.3	61.3	49.5	69.5	52.7	46.6	30.0	67.7	192
(WY)	2004	2004	2004	2004	2004	2002	2004	2004	2004	2004	2004	2004
MIN	10.2	7.01	22.2	17.4	19.3	44.1	28.2	13.9	15.6	5.58	9.17	9.21
(WY)	2002	2001	2003	2002	2002	2003	2003	2001	2001	2002	2002	2001

e Estimated.

OHIO RIVER MAIN STEM

03085956 MONTOUR RUN AT SCOTT STATION NEAR IMPERIAL, PA--Continued

SUMMARY STATISTICS	FOR 2003 CALENDAR YEAR		FOR 2004 WATER YEAR		WATER YEARS 2000 - 2004	
ANNUAL TOTAL	11488.5		22489.6			
ANNUAL MEAN	31.5		61.4		34.0	
HIGHEST ANNUAL MEAN					61.4	
LOWEST ANNUAL MEAN					22.4	
HIGHEST DAILY MEAN	396	Nov 19	2870	Sep 17	2870	Sep 17 2004
LOWEST DAILY MEAN	5.1	Aug 25	6.5	Oct 12	2.0	Aug 11 2002
ANNUAL SEVEN-DAY MINIMUM	5.5	Aug 20	6.8	Oct 7	2.4	Aug 8 2002
MAXIMUM PEAK FLOW			a8280	Sep 17	a8280	Sep 17 2004
MAXIMUM PEAK STAGE			15.58	Sep 17	15.58	Sep 17 2004
INSTANTANEOUS LOW FLOW			6.3	Oct 12,14	1.8	Aug 12 2002
10 PERCENT EXCEEDS	67		88		61	
50 PERCENT EXCEEDS	18		28		16	
90 PERCENT EXCEEDS	7.3		9.5		4.7	

a From rating curve extended above 4,600 ft³/s.