



2004 Water Year BEAVER RIVER BASIN

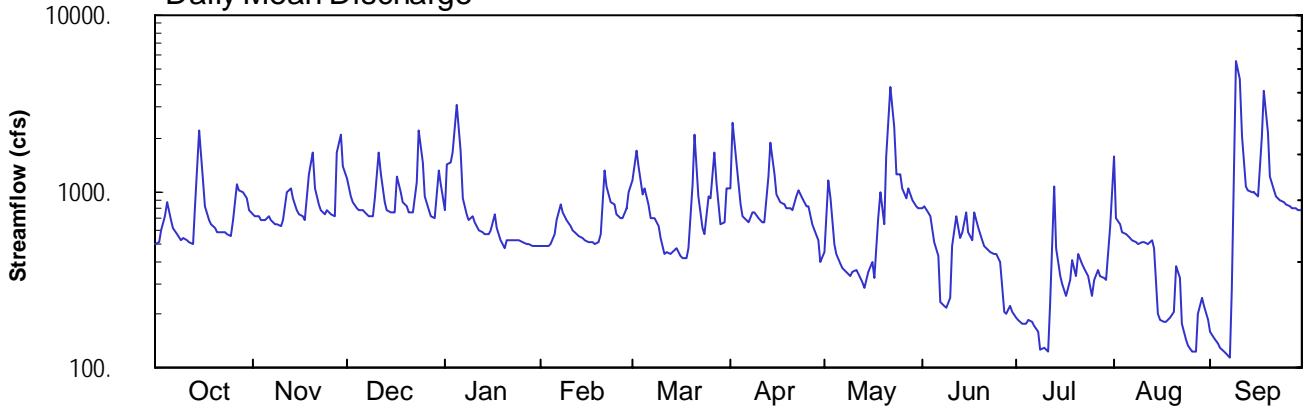
03102850 Shenango River near Transfer, PA

Latitude: 41° 21' 13"
Mercer County

Longitude: 080° 23' 53"
Datum: 913.94 feet

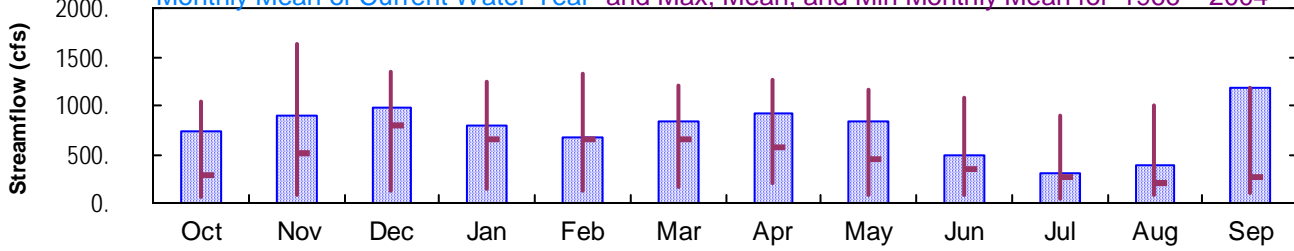
Hydrologic Unit Code: 05030102
Drainage Area: 337. mi²

Daily Mean Discharge

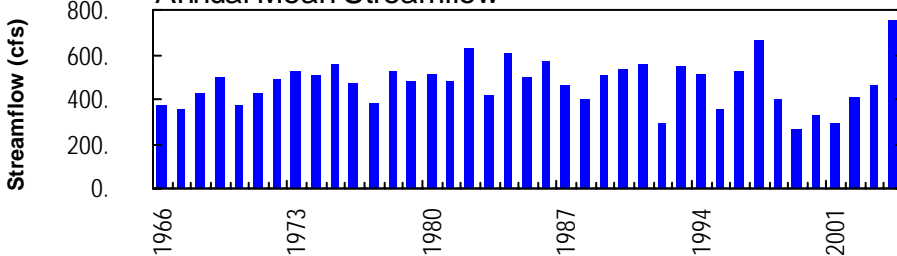


Monthly Statistics

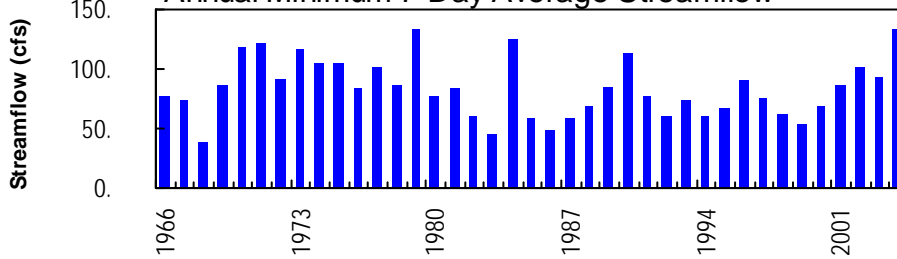
Monthly Mean of Current Water Year and Max, Mean, and Min Monthly Mean for 1966 – 2004



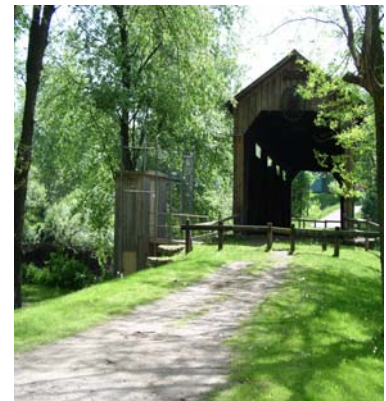
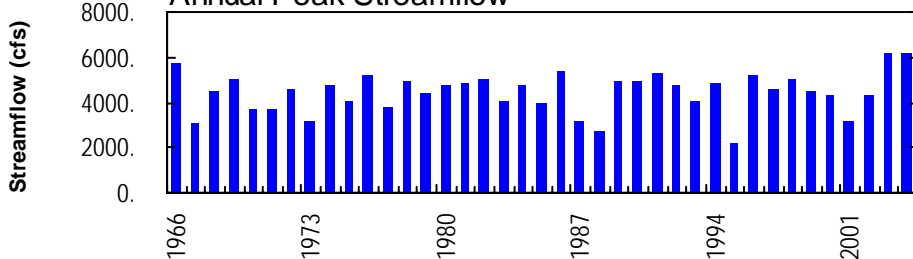
Annual Mean Streamflow



Annual Minimum 7-Day Average Streamflow



Annual Peak Streamflow



BEAVER RIVER BASIN

03102850 SHENANGO RIVER NEAR TRANSFER, PA

LOCATION.--Lat 41°21'13", long 80°23'53", Mercer County, Hydrologic Unit 05030102, on left bank at downstream side of covered wooden bridge, 200 ft downstream from highway bridge, 0.6 mi downstream from Big Run, 2.5 mi northeast of Transfer, at mile 71.8.

DRAINAGE AREA.--337 mi².

PERIOD OF RECORD.--October 1965 to current year.

REVISED RECORDS.--WDR PA-71-3: 1966, 1967.

GAGE.--Water-stage recorder. Datum of gage is 913.94 ft above National Geodetic Vertical Datum of 1929 (Pennsylvania Department of Transportation benchmark).

REMARKS.--Records good except those for estimated daily discharges, which are poor. Flow regulated since December 1933 by Pymatuning Reservoir (station 03100500) 13 mi upstream and at low flow by mills upstream of station. Several measurements of water temperature were made during the year. U.S. Army Corps of Engineers satellite telemetry at station.

**DISCHARGE, CUBIC FEET PER SECOND, WATER YEAR OCTOBER 2003 TO SEPTEMBER 2004
DAILY MEAN VALUES**

DAY	OCT	NOV	DEC	JAN	FEB	MAR	APR	MAY	JUN	JUL	AUG	SEP
1	506	748	1180	779	e487	1160	1050	454	796	190	1590	161
2	514	732	946	1410	e487	1690	2460	1160	818	185	709	149
3	605	723	866	1470	e485	1370	1460	905	766	178	656	136
4	729	694	804	1670	e499	970	843	507	726	178	591	129
5	864	693	784	3090	e565	1050	716	438	510	189	570	125
6	683	722	778	1700	e686	850	681	391	426	180	542	121
7	615	683	758	909	e850	708	672	366	233	174	527	113
8	579	658	726	e749	e761	701	766	346	223	158	517	275
9	533	648	719	e688	e688	635	755	333	218	128	508	5480
10	539	634	917	e729	e640	545	698	350	251	128	513	4400
11	527	682	1680	e672	e604	443	667	361	493	124	511	2040
12	517	975	1240	e594	e579	454	660	337	722	e224	504	1080
13	508	1040	873	e583	e563	441	1200	306	549	e1070	522	1010
14	812	902	785	e576	e544	449	1890	281	589	e471	482	990
15	2180	779	758	e576	e531	473	1240	351	765	e335	204	982
16	1160	738	757	e606	e517	429	966	396	581	300	187	933
17	813	715	1230	e743	e512	414	865	325	526	255	181	2040
18	688	690	1000	e615	e508	414	843	705	759	315	180	3720
19	652	1260	857	e528	e511	472	794	998	617	412	189	2130
20	611	1670	815	e481	e576	1110	802	648	528	328	207	1200
21	591	1050	768	e528	e1300	2120	777	1570	491	445	378	1020
22	586	847	766	e527	e1070	940	930	3940	467	386	322	946
23	584	777	1130	e530	864	626	1020	2350	451	372	176	897
24	565	749	2210	e533	854	579	906	1250	438	327	145	860
25	561	772	1470	e530	740	936	830	1260	444	256	131	839
26	692	734	935	e520	710	917	824	1040	401	316	123	831
27	1100	714	788	e501	707	1650	649	905	205	356	124	806
28	1010	1660	716	e497	808	1080	610	1030	202	334	201	795
29	980	2100	709	e494	976	650	524	897	224	319	247	785
30	902	1400	1330	e492	---	663	393	815	209	317	226	778
31	786	---	1100	e487	---	1040	---	804	---	642	185	---
TOTAL	22992	27189	30395	24807	19622	25979	27491	25819	14628	9592	12148	35771
MEAN	742	906	980	800	677	838	916	833	488	309	392	1192
MAX	2180	2100	2210	3090	1300	2120	2460	3940	818	1070	1590	5480
MIN	506	634	709	481	485	414	393	281	202	124	123	113
CFSM	2.20	2.69	2.91	2.37	2.01	2.49	2.72	2.47	1.45	0.92	1.16	3.54
IN.	2.54	3.00	3.36	2.74	2.17	2.87	3.03	2.85	1.61	1.06	1.34	3.95

STATISTICS OF MONTHLY MEAN DATA FOR WATER YEARS 1966 - 2004, BY WATER YEAR (WY)

MEAN	291	519	788	653	655	661	572	445	340	261	213	273
MAX	1034	1627	1343	1242	1319	1212	1273	1162	1080	902	1005	1192
(WY)	1991	1986	1991	1993	1990	1985	1994	2002	1989	2003	1980	2004
MIN	57.9	88.4	128	151	121	172	207	82.9	86.2	46.5	81.6	101
(WY)	1983	1999	1999	1977	1987	1969	1968	1987	1967	1968	1982	1999

e Estimated.

BEAVER RIVER BASIN

03102850 SHENANGO RIVER NEAR TRANSFER, PA--Continued

SUMMARY STATISTICS	FOR 2003 CALENDAR YEAR		FOR 2004 WATER YEAR		WATER YEARS 1966 - 2004	
ANNUAL TOTAL	235219		276433			
ANNUAL MEAN	644		755		472	
HIGHEST ANNUAL MEAN					755	
LOWEST ANNUAL MEAN					265	
HIGHEST DAILY MEAN	5560	Jul 22	5480	Sep 9	5560	Jul 22 2003
LOWEST DAILY MEAN	96	Jul 17	113	Sep 7	33	Jul 21 1968
ANNUAL SEVEN-DAY MINIMUM	151	Jun 27	133	Sep 1	39	Jul 17 1968
MAXIMUM PEAK FLOW			a6110	Sep 9	a6580	Jul 22 2003
MAXIMUM PEAK STAGE			10.66	Sep 9	11.33	Jul 22 2003
INSTANTANEOUS LOW FLOW			91	Jul 8	33	Jul 20 1968
ANNUAL RUNOFF (CFSM)	1.91		2.24		1.40	
ANNUAL RUNOFF (INCHES)	25.96		30.51		19.02	
10 PERCENT EXCEEDS	1120		1240		998	
50 PERCENT EXCEEDS	551		672		296	
90 PERCENT EXCEEDS	210		224		101	

a From rating curve extended above 4,800 ft³/s.